

JDMC
20 August
2025

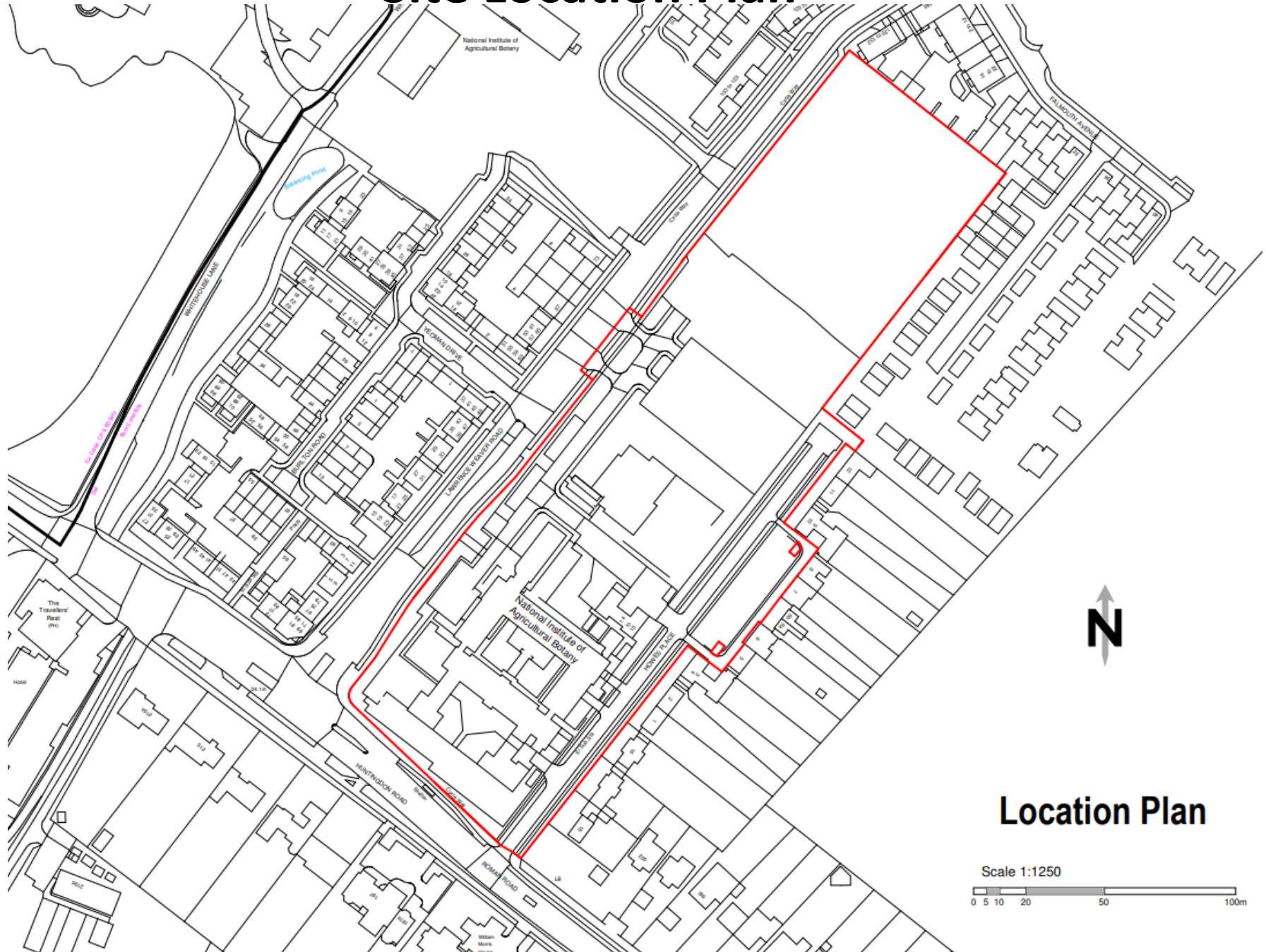


GREATER CAMBRIDGE
SHARED PLANNING

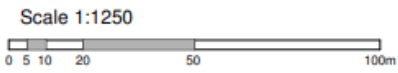
23/04643/OUT – Former National Institute of Agricultural Botany (NIAB) site, Huntington Road, Cambridge.

Proposal: Outline application (all matters reserved except for layout, scale and access arrangements on to Laurence Weaver Road) for the demolition of all site buildings and structures other than Chapter House and erection of buildings for laboratory / office (Class E (g(i)) and (g(ii))) and café use (class E(b)), and associated facilities and infrastructure, along with the relocation of existing facilities serving the retained Chapter House that are currently accessed from Lawrence Weaver Road including refuse storage, vehicle access, car parking and cycle parking.

Site Location Plan

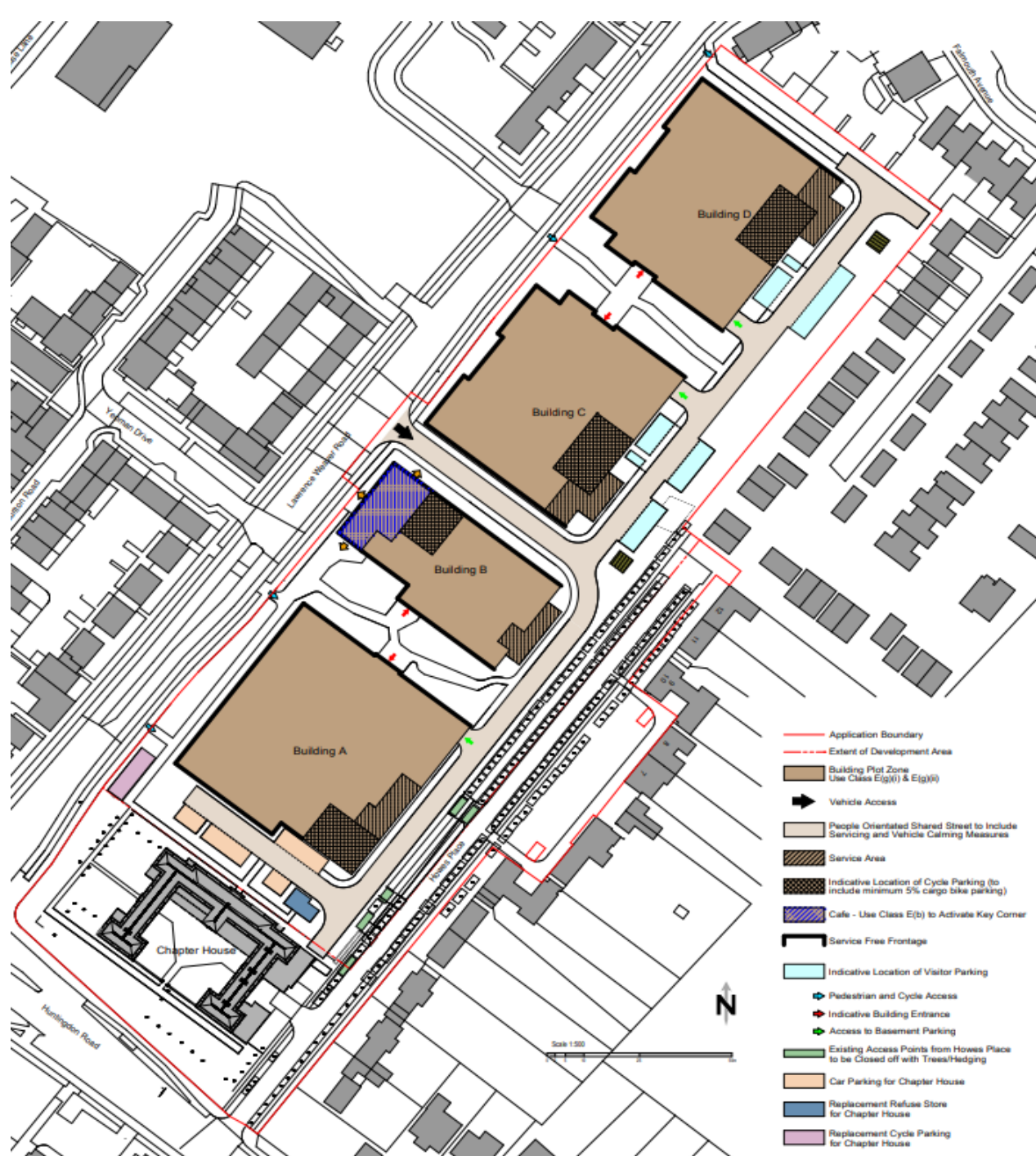


Location Plan



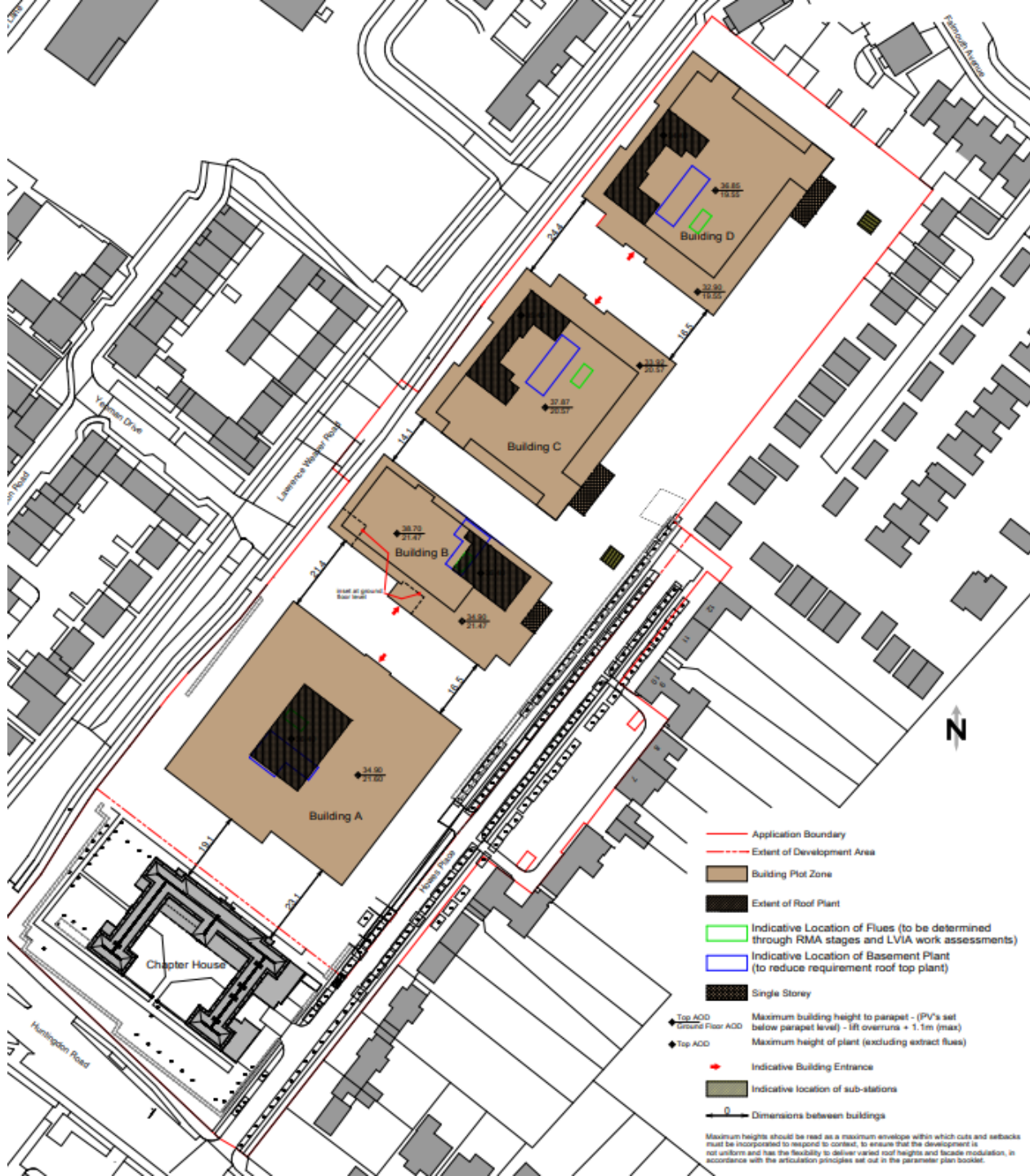


Parameter Plan – Landscape / Open Space

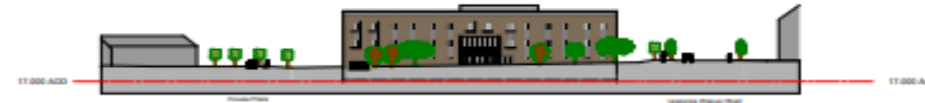


Parameter Plan – Movement and Access

Parameter Plan – Building Zones and Maximum Heights



Illustrative Street Scene and Sections



Section A - A



Section C - C (Street Scene)



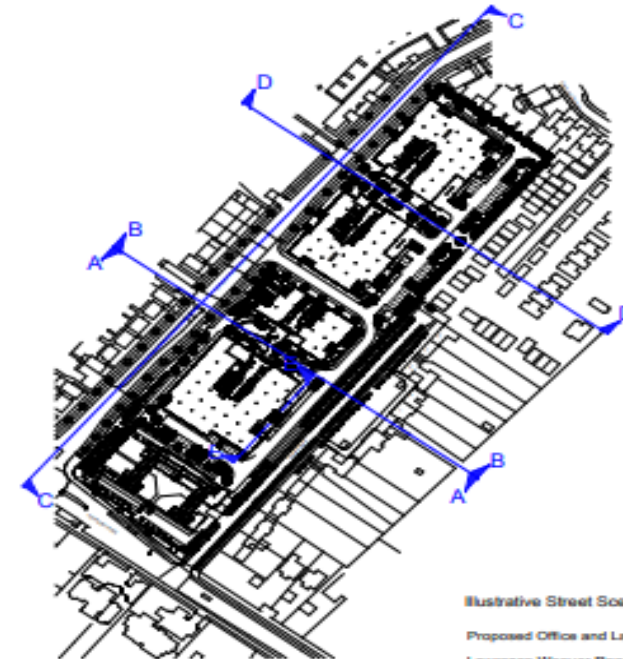
Section B - B



Section D - D



Section E - E



Illustrative Street Scenes & Sections

Proposed Office and Laboratory Hub

Lawrence Weaver Road, Cambridge

Source: LWR, (2), 11, REV: 4
Scale: 1:500
14 August 2023

PHA

25/01059/REM and 25/01098/REM – Springstead Village

Proposal:

25/01098/REM (SCDC)

25/01059/REM Cambridge City (CC)

Proposal: Reserved matters application for appearance, landscape, layout and scale for 292 residential units, local centre to include community centre (use class F2) and convenience store, retail and cafe (use class E) along with the partial discharge of conditions

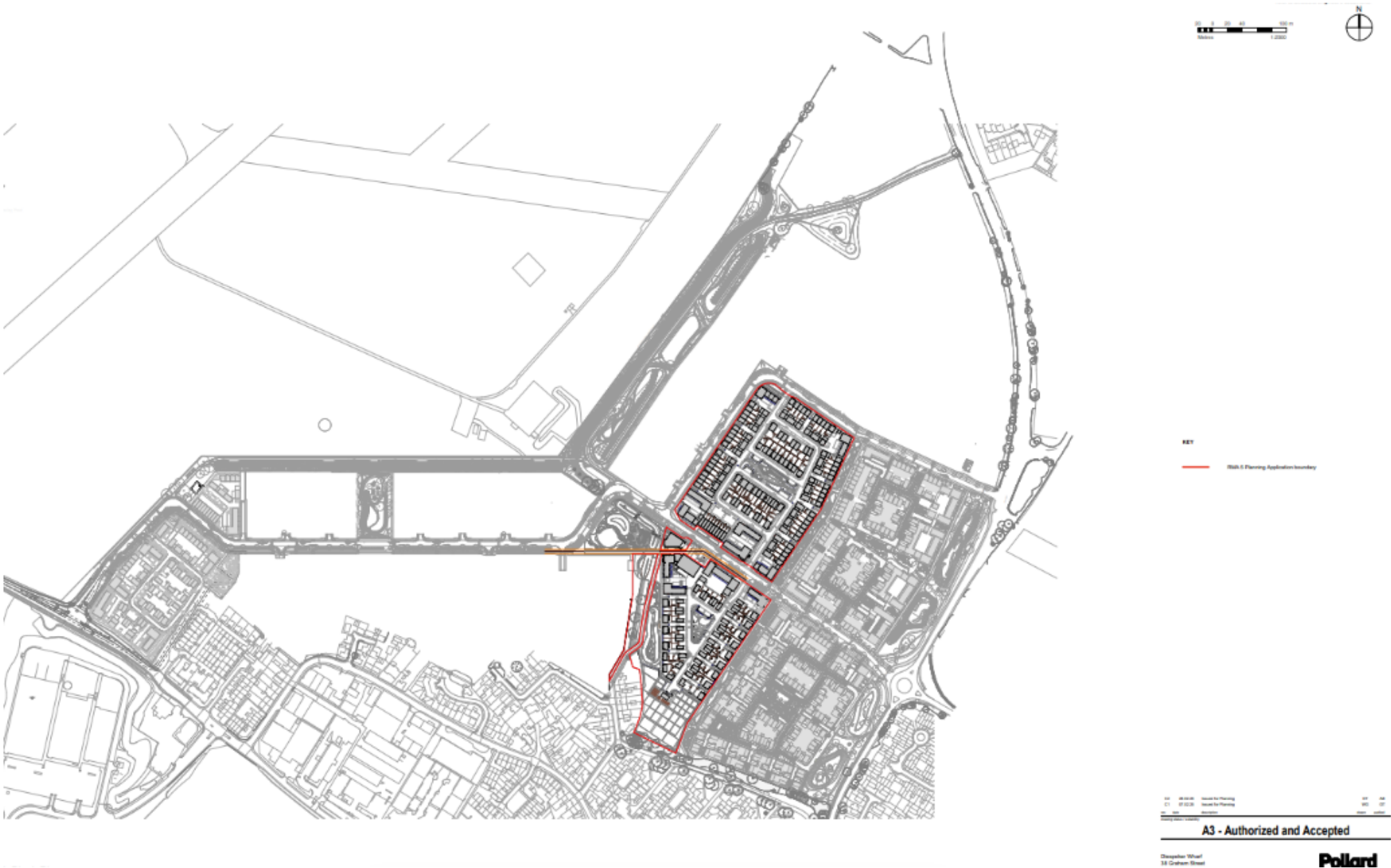
10,11,12,13,14,17,18,19,20,21,23,24,26,29,30,34,36,37,38,40,44,45,55,59,60,61 and 64 pursuant to outline planning permission 18/0481/OUT and 18/1231/OUT as varied by 22/01966/S73 and 22/01967/S73.

Address: Land North of Cherry Hinton, Cambridge

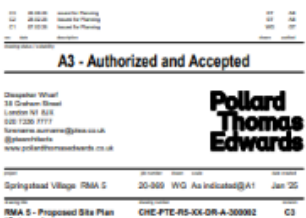
Site Plan



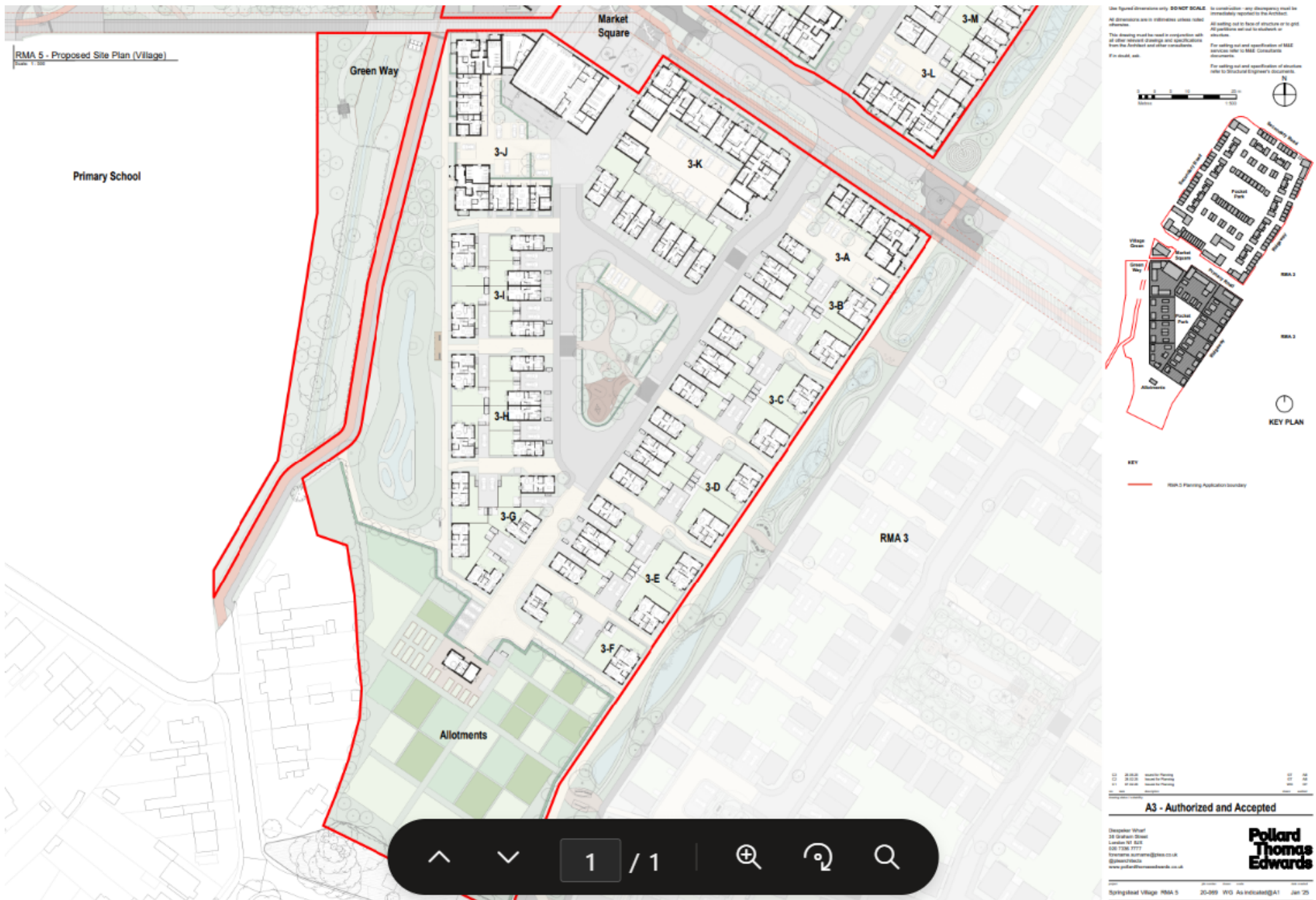
Block Plan



1 RMA 5 - Proposed Site Plan (Gateway)
Scale: 1" = 100'



Site Plan - Village



Landscape Masterplan



Sections - The Village



1 Section 1 - Village
Scale: 1 : 200



2 Section 2 - Village



3 Section 3 - Village



4 Section 4 - Village

<p>This drawing is to AS 2201. Use figured dimensions only DONOT SCALE</p> <p>All dimensions are in millimetres unless noted otherwise.</p> <p>This drawing must be read in conjunction with all other relevant drawings and specifications from the Architect and other consultants.</p> <p>It is NOT to be used as is.</p>	<p>All setting out to be confirmed on site prior to construction - any discrepancies must be immediately reported to the Architect.</p> <p>All setting out to be based on structure as in print. All positions set out to establish or fix structure.</p> <p>For setting out and specification of M&E services refer to M&E Consultants documents.</p> <p>For setting out and specification of structure refer to Structural Engineer's documents.</p>
---	--



no.	date	description	depos	withdraw
64	25-12-16	Issued for Planning	67	14
67	07-12-16	Issued for Planning	145	37

A3 - Authorized and Accepted

Deepaker Wharf
38 Graham Street
London N1 8JX
020 7330 7777
Surname.surname@glaxo.co.uk
www.polarislife
www.polarislife.co.uk

**Pollard
Thomas
Edwards**

Project	Job Number	Station	Code	Date Created
Springstead Village RMA S	20-069	WG	1 : 250@A1	Jan 25

Sections - The Gateway



2 Section 1 - Gateway
Scale 1:200



1 Section 2 - Gateway
Scale 1:200



3 Section 3 - Gateway
Scale 1:200



Use figured dimensions only. **DO NOT SCALE** in construction - any discrepancy must be immediately reported to the Architect.
All dimensions are in millimetres unless noted otherwise.
This drawing must be read in conjunction with all other relevant drawings and specifications from the Architect and other consultants.
For setting out and specification of structures refer to the Architect and other consultants.
For setting out and specification of structures refer to the Structural Engineer's documents.



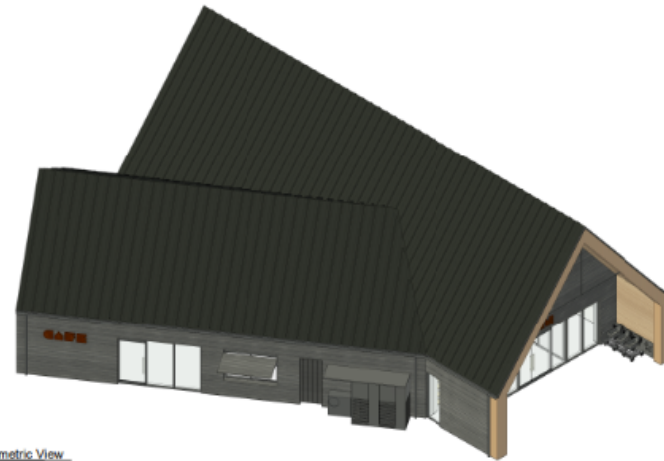
Sections - Community hub



1	Cross Section
	Scale: 1" = 100'



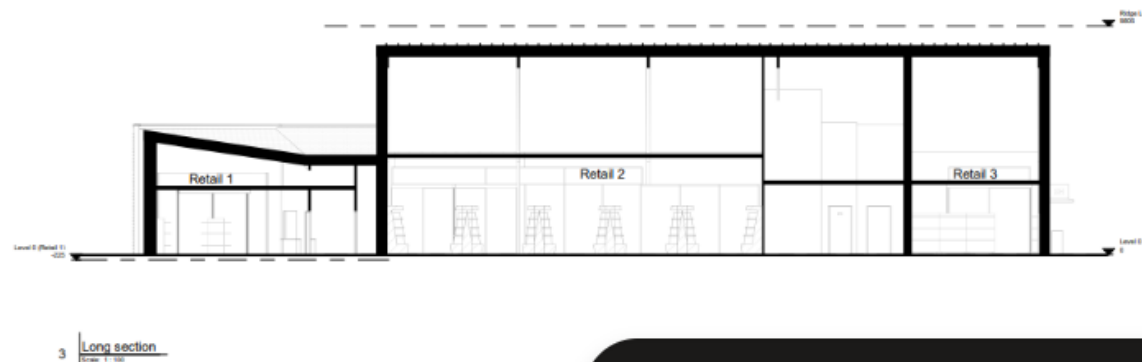
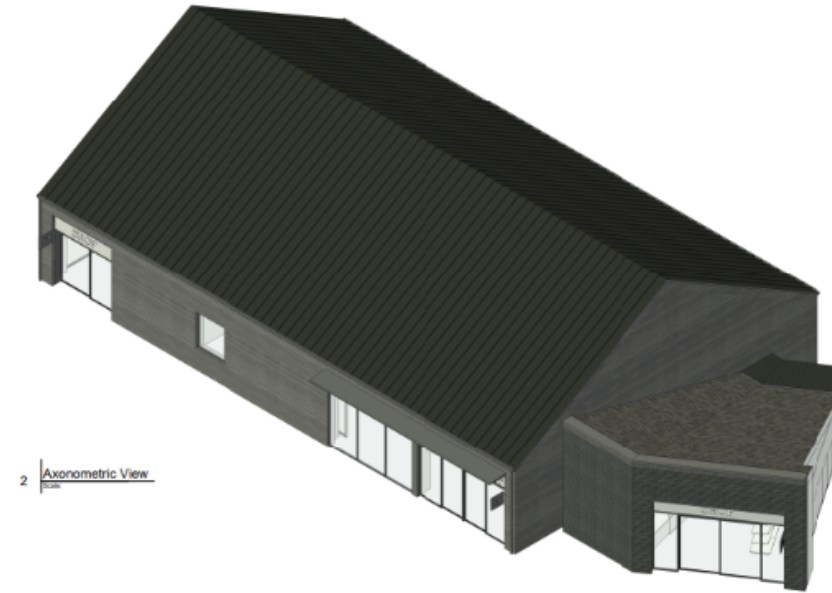
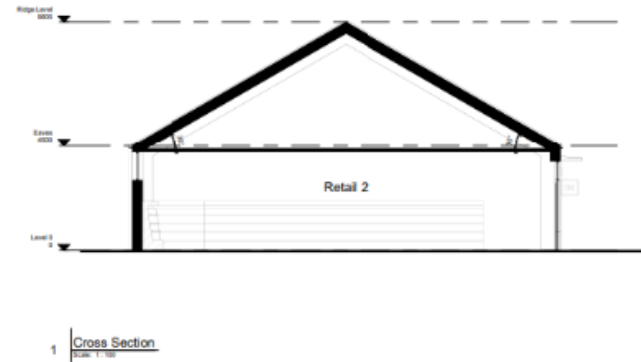
2 Long Section
Scale: 1" = 100'



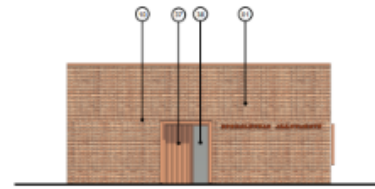
3	Axonometric View
---	------------------



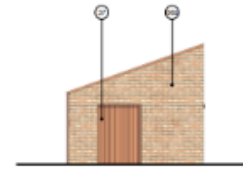
Sections – Retail building



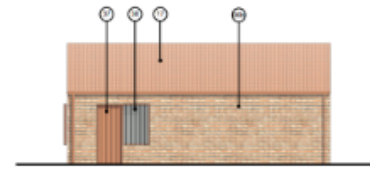
Sections - Allotment clubhouse



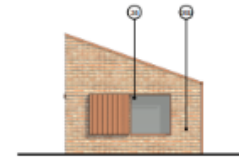
1 Front Elevation
Scale: 1 : 100



2 | Left Elevation



3 | **Rear Elevation**
Quadrant 1 - 100



4 | Right Elevation



8 Long Section
(Scale: 1 : 100)



7	Cross Section
---	---------------



9	<u>Axonometric View</u>
	Scale



<p>no dimensions are in comments unless noted otherwise.</p> <p>This drawing must be used in conjunction with all other related drawings and specifications from the Architect and other consultants.</p> <p>If in doubt, ask.</p>	<p>All setting out to be done by structure or to grid.</p> <p>All portions set out to subwork or structure.</p> <p>For setting out and specification of MSE services refer to MSE Consultants documents.</p> <p>For setting out and specification of structure refer to Structural Engineer's documents.</p>
--	--



KEY LEGEND

id	no	name	type	value
1	1	Bedroom 1 (P)	1.4	lowlevel
2	2	Bedroom 2 (P)	1.4	highlevel
3	3	Bathroom	0.5	highlevel
4	4	Kitchen	1.0	low water cold
5	5	Living	1.0/1.2	low water cold
6	6	Dining	0.5/0.6	low water cold
7	7	Corridor	0.1	low water cold
8	8	Entrance	0.1	low water cold
9	9	Living north	1.0/1.2	low water cold
10	10	Corridor	0.1	low water cold
11	11	Room general	0.5/0.6	low water cold
12	12	Room	0.5/0.6	low water cold
13	13	Room	0.5/0.6	low water cold
14	14	Living	1.0/1.2	low water cold

*value in kW schedule for equipment details

MATERIAL KEY LEGEND

[illegible]

no	date	description	debet	credit
52	26.02.26	Interest for Planning	519	516
53	27.02.26	Interest for Planning	505	507

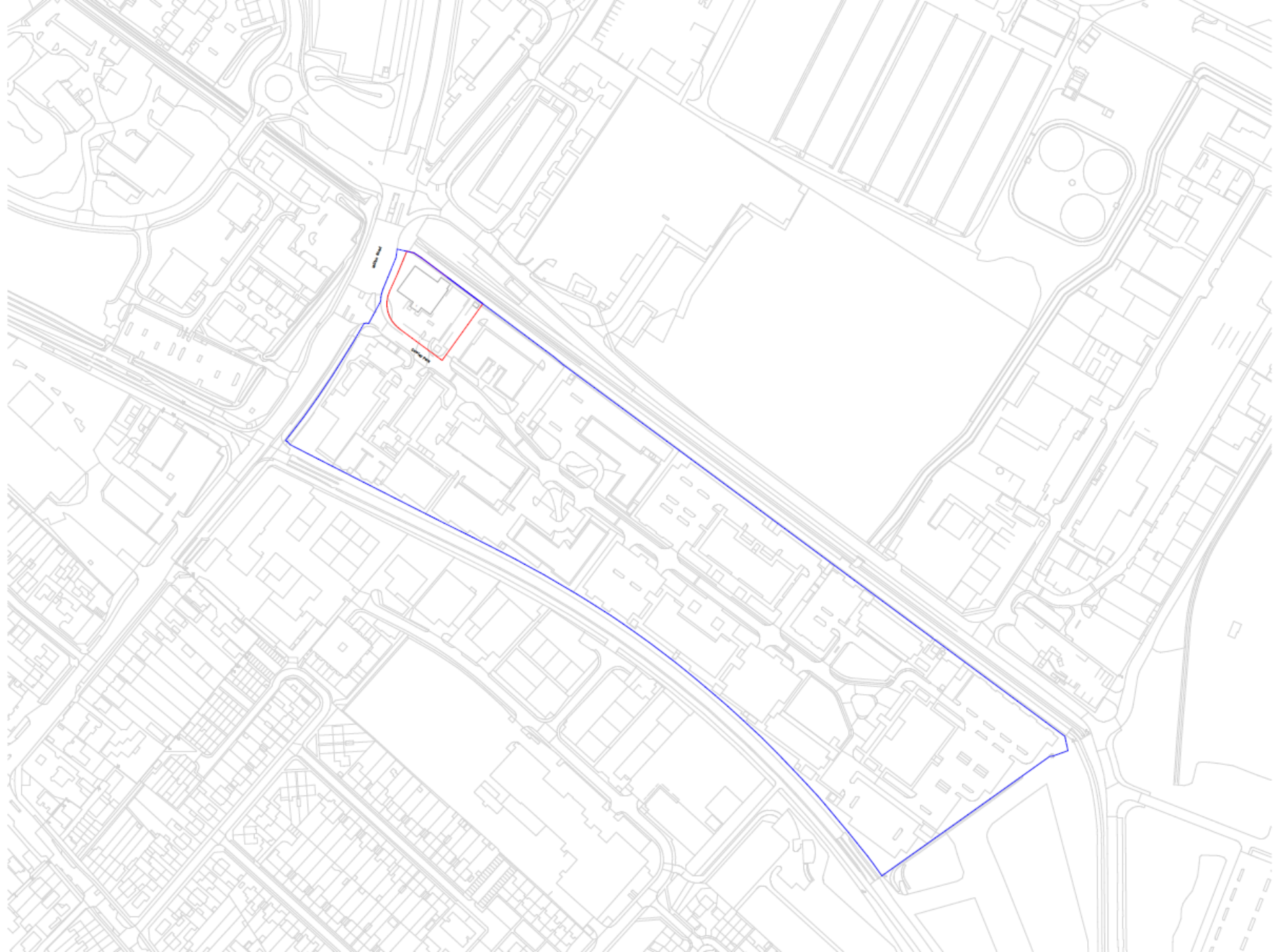
A3 - Authorized and Accepted

Dispatch Wharf
38 Graham Street
London W1 8JL
020 7330 8777

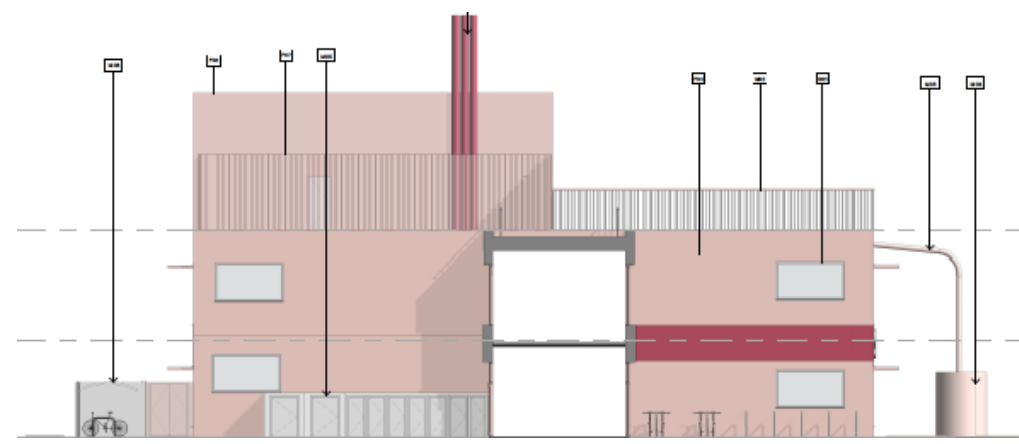
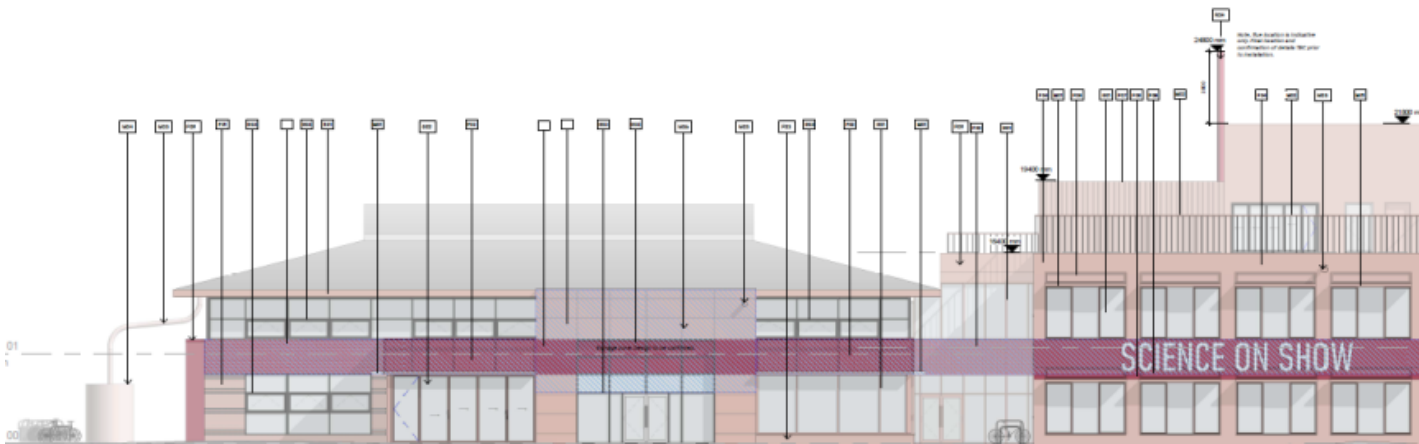
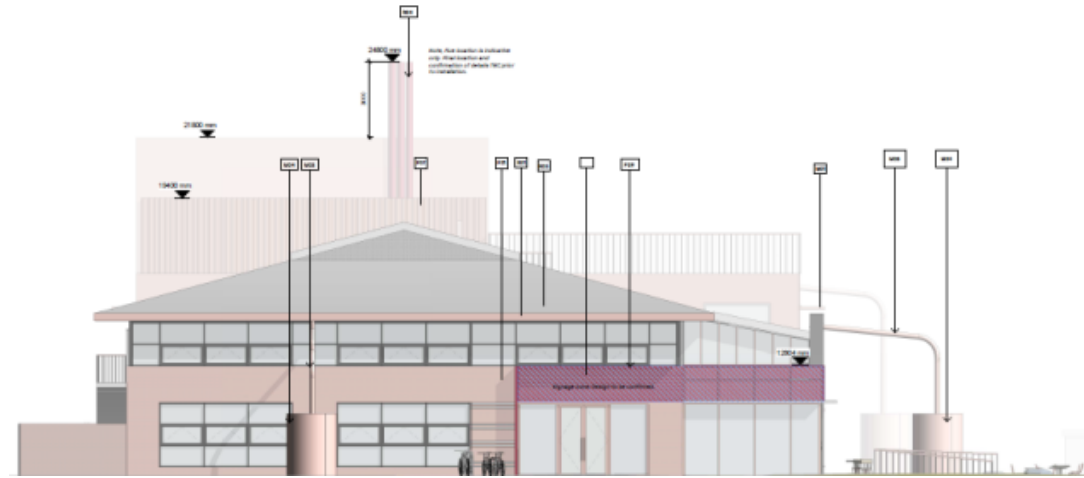
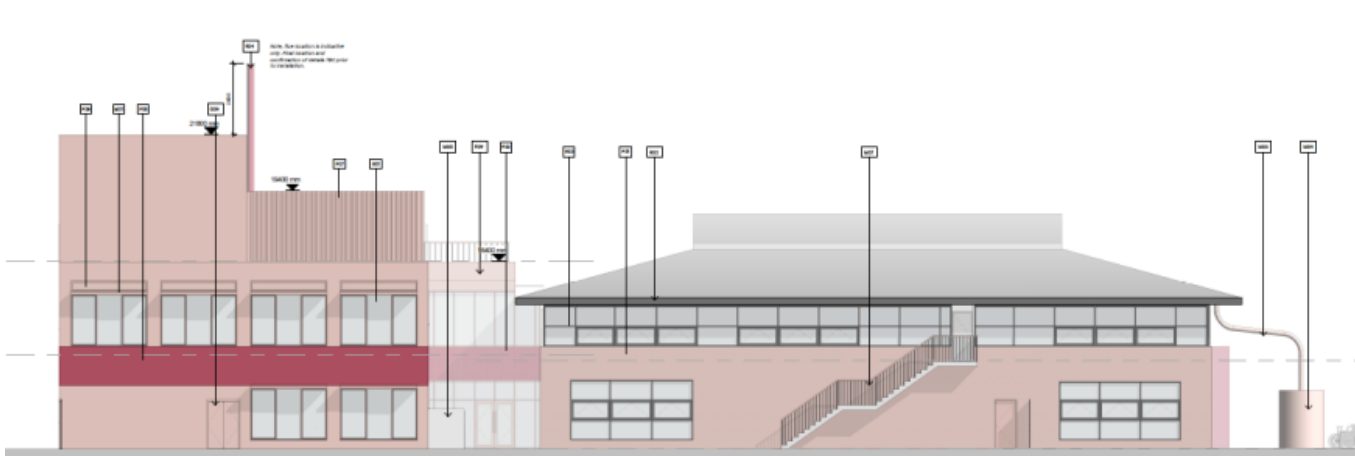
**Pollard
Thompe**

25/02022/FUL– 1 Cambridge Business Park, Robinson House, Cowley Road, Cambridge

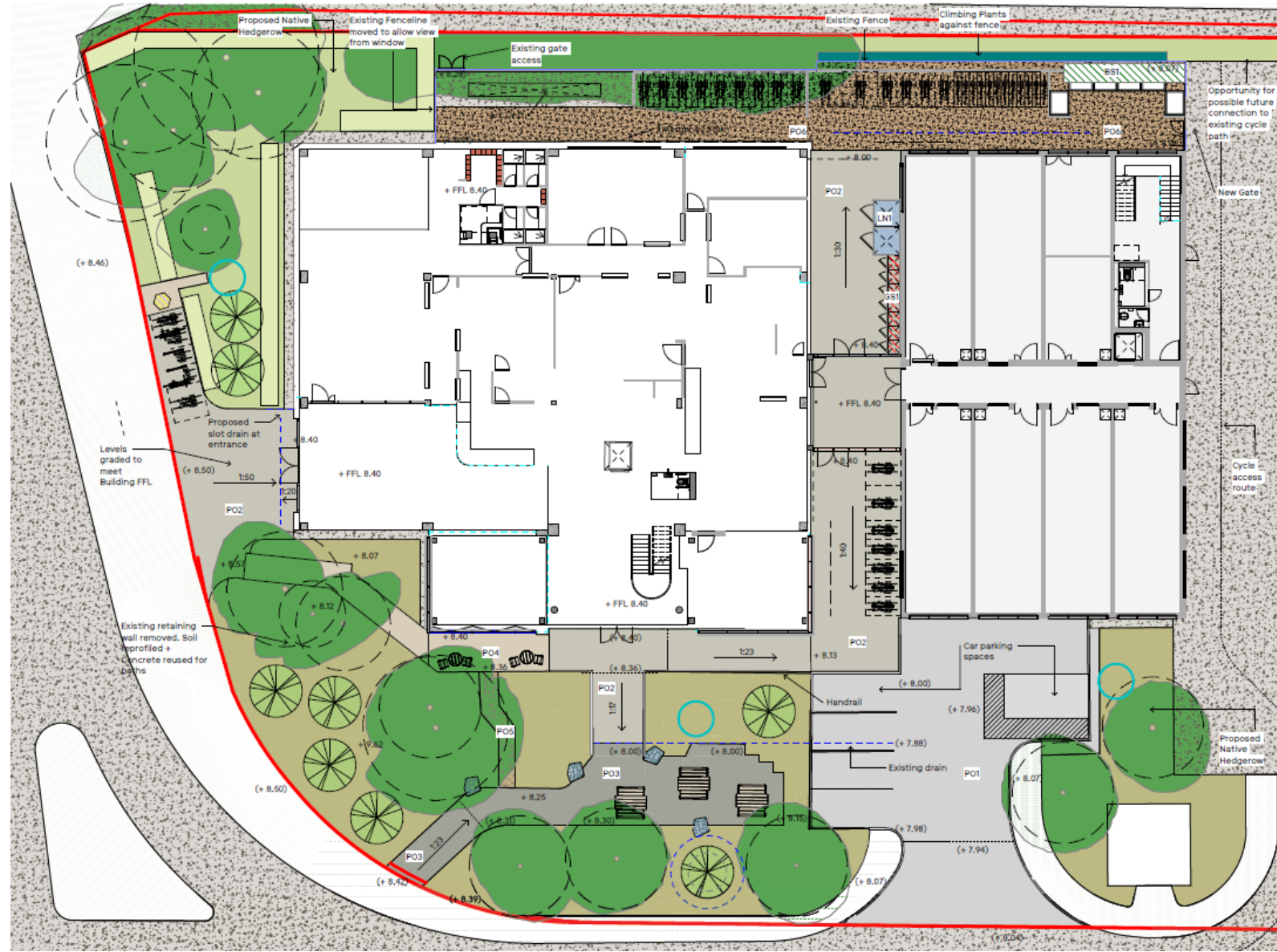
Proposal: Refurbishment and extension to existing building for continued Class E use (including office and laboratory use with ancillary cafe, event and community space) and landscaping, car and cycle parking, plant and storage and other associated works.



Elevations



Site plan



Floor plans

