

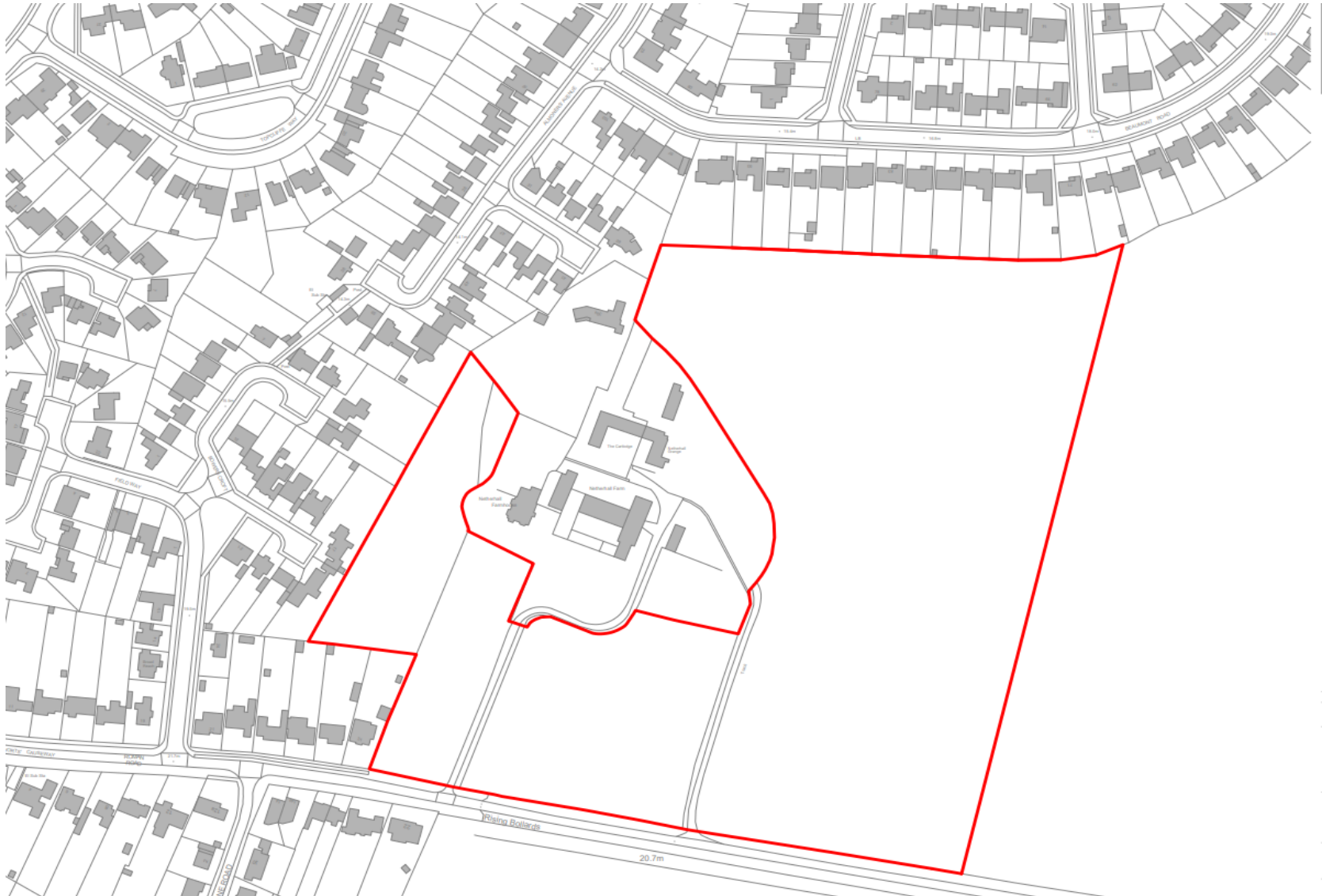
Planning  
Committee



**GREATER CAMBRIDGE**  
SHARED PLANNING

# MAJOR APPLICATIONS

# 23/04191/REM Netherhall Farm, Worts' Causeway Site Location Plan



# 23/04191/REM Site Layout/Ground Floor Plan



# 23/04191/REM Street Elevations



Section B - part 1



Section B - part 2



Section A - part 1



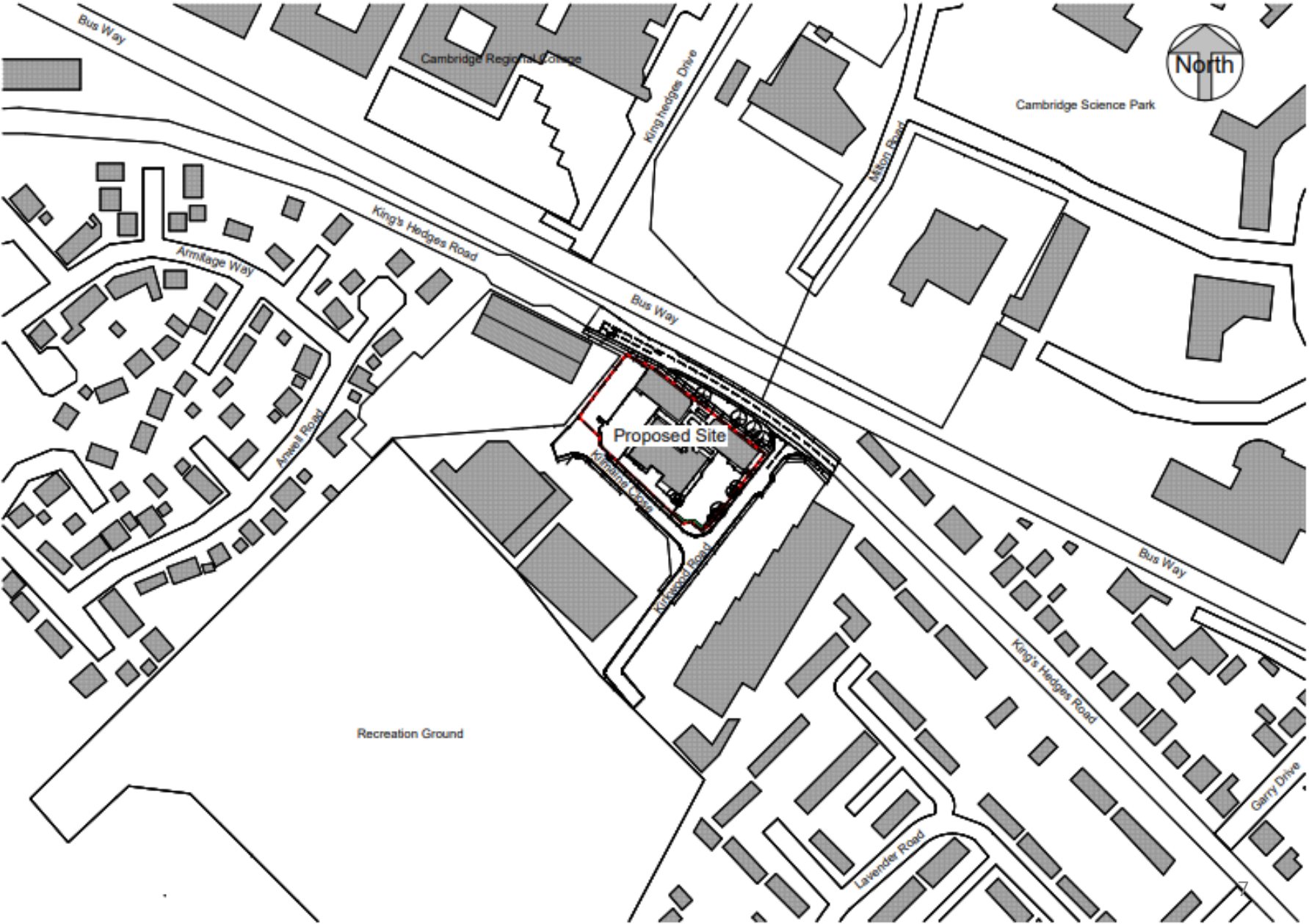
Section A - part 2

**23/04289/FUL**

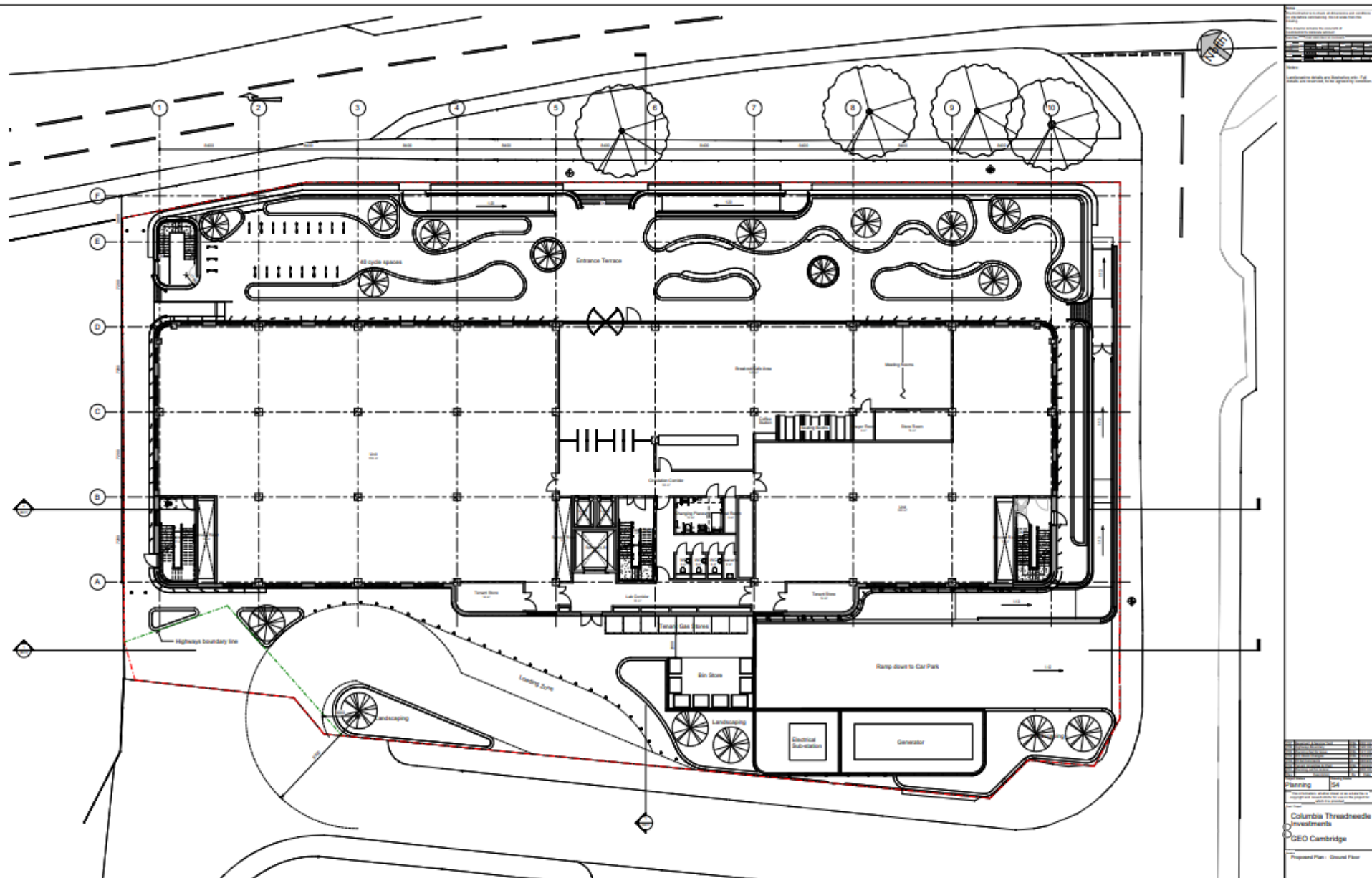
**Demolition of existing buildings and structures, and erection of building (Class E(g)i/ii) with associated access, site infrastructure, landscaping and car and cycle parking provision.**

**Brookmount Court Kirkwood Road Cambridge  
Cambridgeshire CB4 2QH**

# Location Plan

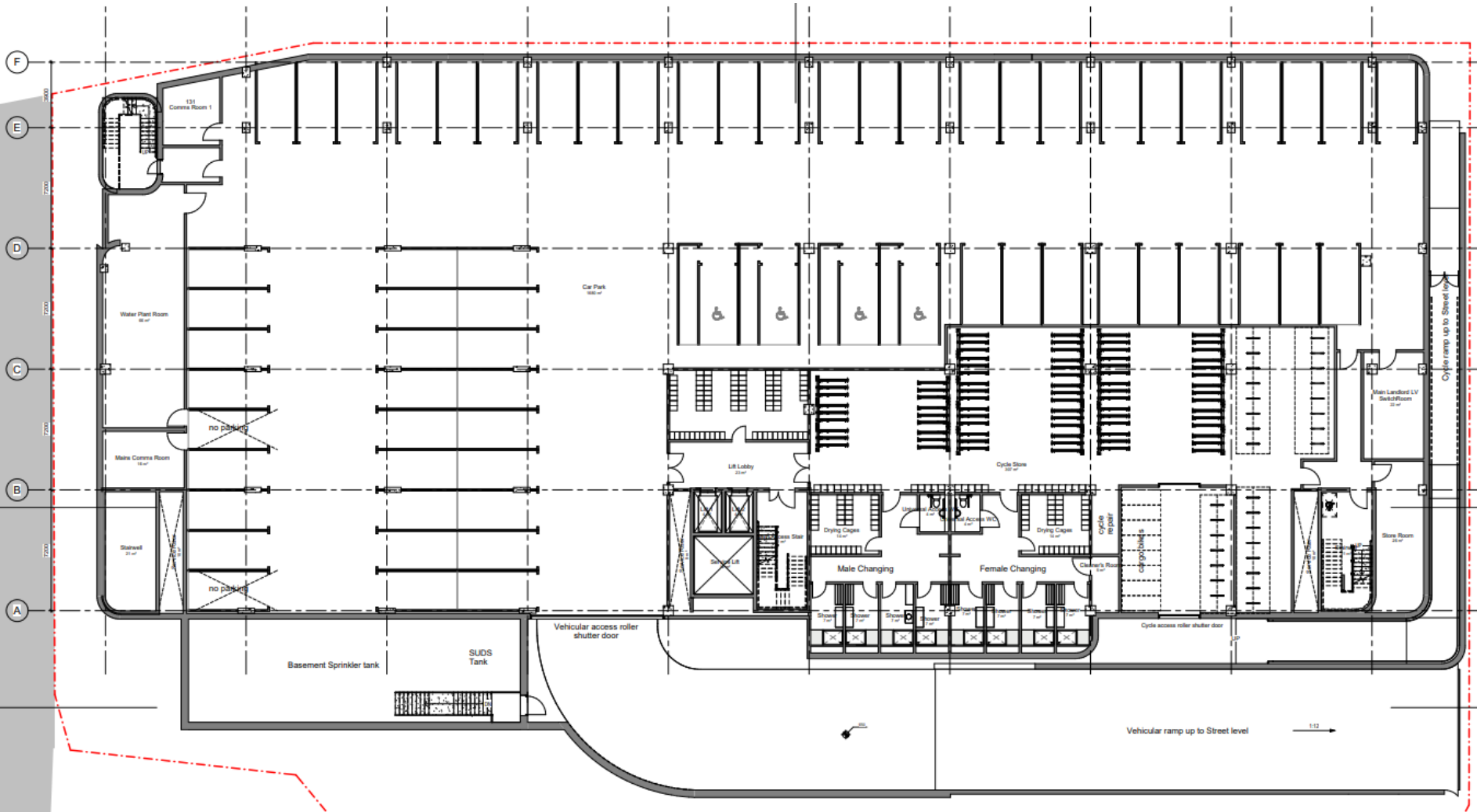


# Ground floor

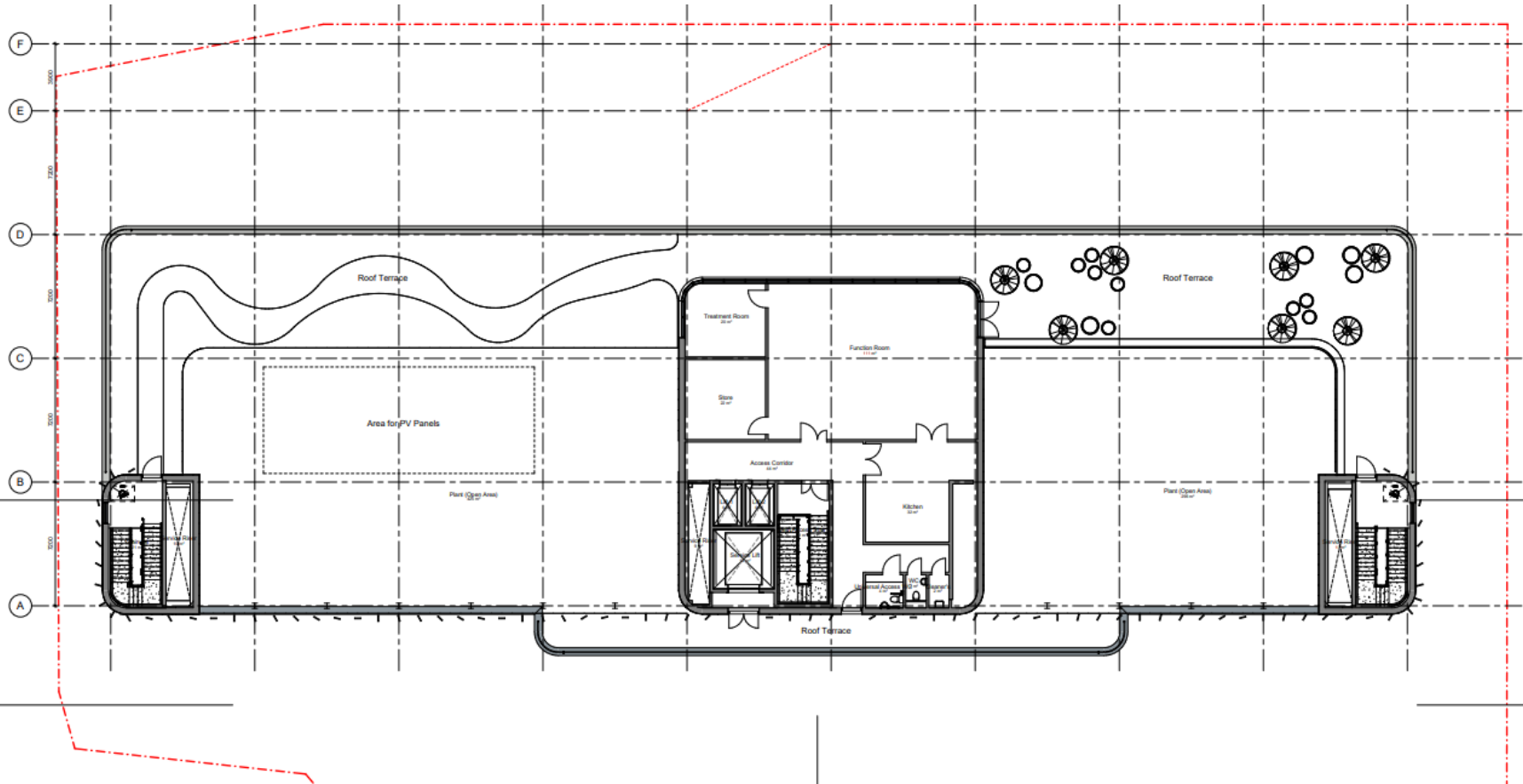




# Basement



# Roof terrace

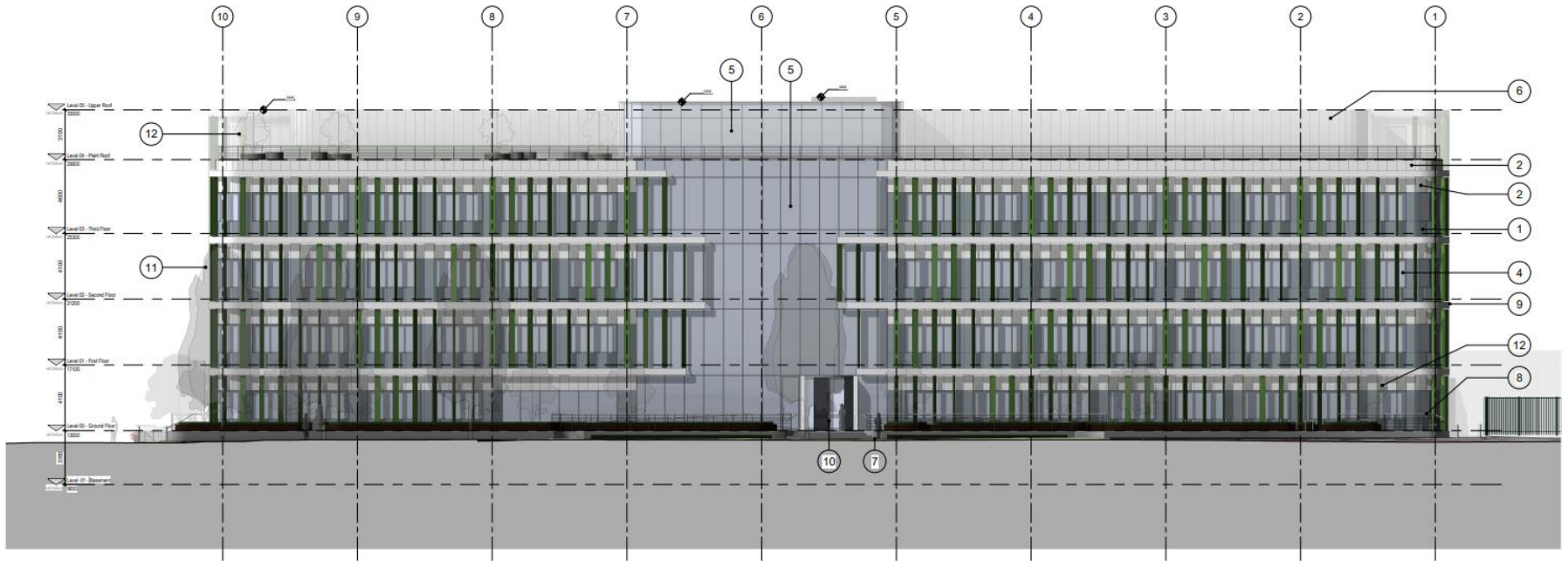


# Section



1 Section C-C - Planning  
1:100

# Elevation north



1 Proposed Elevation North - Planning - Colour  
1:100

# Elevation south



1 Proposed Elevation South - Planning - Colour  
1:100

# Façade visualisation



# Façade visualisation



# Landscaping

## ENTRANCE TERRACE STUDY







# Frontage cycle parking

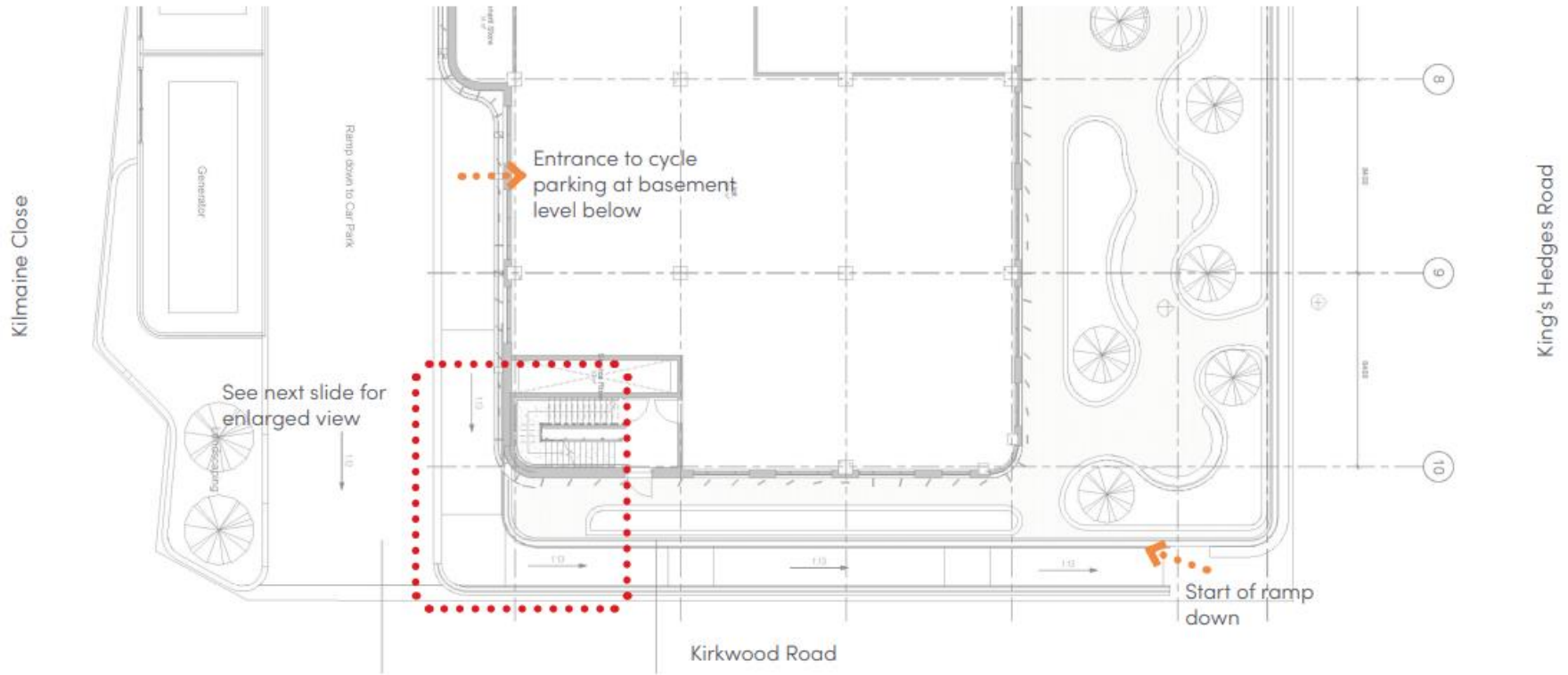


# Façade Treatment



# Cycling parking

- The access route has been designed following the guidance in Cambridge City Council's cycle parking SPD.
- The width of the upper section of the ramp is 1.8m wide and it has a gradient of 1:13, which meets local policy standards.
- Cyclists will make the turn where the space is widest (2600mm on the lower section).



# Terrace

## ENTRANCE TERRACE STUDY

Emerging Design - Following DRP comments

