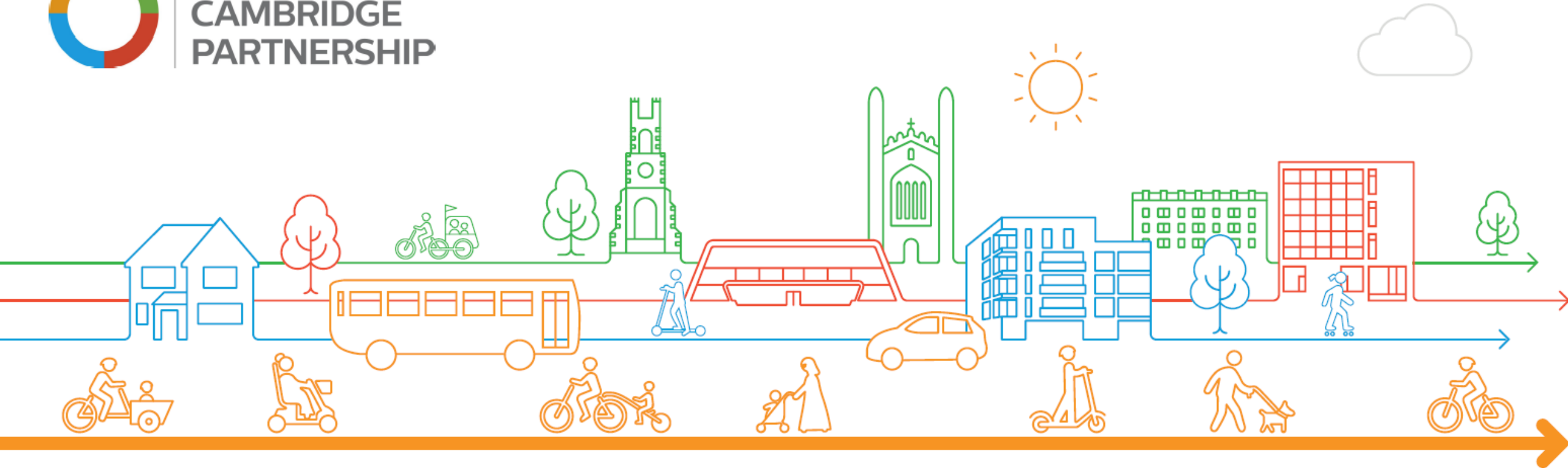




**GREATER
CAMBRIDGE
PARTNERSHIP**



Milton Road Update

November 2023

Progress to date



Areas Complete

- Mitchams Corner to Herbert Street (East)
- Roundabout NE, SE, NW quadrant and the roundabout itself has now been planted
- Roundabout to Union Lane (East)
- Fraser Road to Ramsden Square (East)
- Kings Hedges Junction NW Quadrant



Areas in progress

- Mitchams Corner to Gilbert Road (West)
- Roundabout SW quadrant
- Arbury Road to Ramsden Square (West)
- Kings Hedges SE quadrant
- Ramsden Square to Busway (East)



91 trees installed so far

Progress to date



Kings Hedges NE Quadrant



Southern section at Mitcham's
Corner western side



Opposite Fraser Road
looking North

Progress to date



Roundabout NW quadrant



Roundabout planting

Key upcoming tasks

- Works to commence outside the shops at Arbury Road
- Completion of works in total from Mitcham's Corner to Herbert Street which includes carriageway resurfacing in February (Night works)
- Works to the islands at the roundabout commencing in January (most likely 4-way lights)
- Completion of work at Kings Hedges junction on the SE quadrant and switch over to the SW quadrant

**Works still on track to complete next year late summer /
autumn**

Other items

- Cycle parking – planned to install 6 number stands outside the shops at Mitcham's corner and at least 16 number at the Arbury Road shops.
- Parking restriction signs at Mitcham's corner – on order
- Footpath widths
- Lighting – dimming & fitting of shields
- Bus Stops – temporary & permanent
- George Street

Questions

