



Item:

UPDATE ON THE WORK OF KEY EXTERNAL PARTNERSHIPS

To:

Councillor Mairead Healy, Executive Councillor for Equalities, Anti-Poverty and Wellbeing,

Environment and Community Scrutiny Committee, 23 March 2023

Report by:

Graham Saint

Tel: 01223 - 457044

Email: Graham.Saint@cambridge.gov.uk

Wards affected:

Abbey, Arbury, Castle, Cherry Hinton, Coleridge, East Chesterton, King's Hedges, Market, Newnham, Petersfield, Queen Edith's, Romsey, Trumpington, West Chesterton

Not a Key Decision

1. Executive Summary

- 1.1 This paper provides an update on the work of the Health and Wellbeing Board and Cambridge Community Safety as a part of the Council's commitment given in its "Principles of Partnership Working".
- 1.2 This paper shows some of the new partnership arrangements arising from the new Integrated Care Systems that have put in place as part of recent NHS reforms. The Health and Wellbeing Board now operates as a "committee in common" with the Integrated Care Partnership and is developing shared ways of working to improve health and care for all, through collaborative action. The paper also highlights the achievements of the Cambridge Community Safety Partnership during the year.

2. Recommendations

2.1 The Executive Councillor is recommended to:

- a) Continue to work with the Health and Wellbeing Board and engage with the Integrated Care Partnership and its sub-system to ensure that public agencies and others can come together to address the strategic issues affecting Cambridge City and that the concerns of Cambridge citizens are heard, as the system is developed.
- b) Continue to work with partners within the framework of the Cambridge Community Safety Partnership, identifying local priorities and taking action that will make a positive difference to the safety of communities in the city.

3. Background

3.1 The strategic partnerships that are covered in this paper include:

- Cambridgeshire and Peterborough Health and Wellbeing Board (HWB) and the Integrated Care Partnership System (ICPS)
- Cambridge Community Safety Partnership

4. Cambridgeshire and Peterborough Health and Wellbeing Board (HWB)

4.1 During the year Cambridgeshire and Peterborough's Health and Wellbeing Board and the Integrated Care Partnership Committee (ICPC) operated as a "committee in common" with aligned membership.

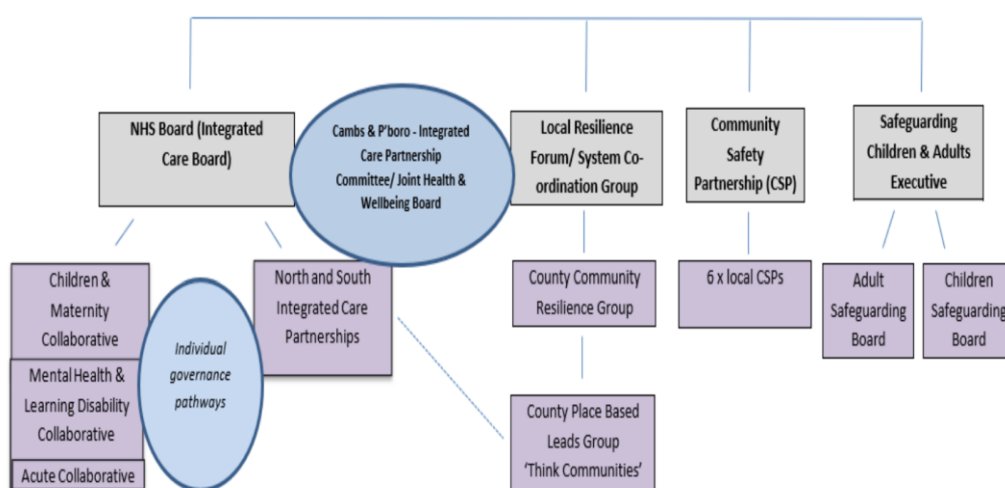
Integrated Care Partnership Committee and the Health and Wellbeing Board

4.2 The ICPC is a statutory body that the Integrated Care Board (ICB) established jointly with Cambridgeshire County Council and Peterborough City Council. The ICPC is responsible for the development of an Integrated Care Strategy. The ICPC has 3 local authority members: the Chair of Adults and Health Committee: Vice-

Chair of Adults and Health Committee (lead member for HWB), and; Cabinet Member for Children’s Services, Education, Skills and the University, Peterborough City Council. The remainder are officers from the various stakeholders.

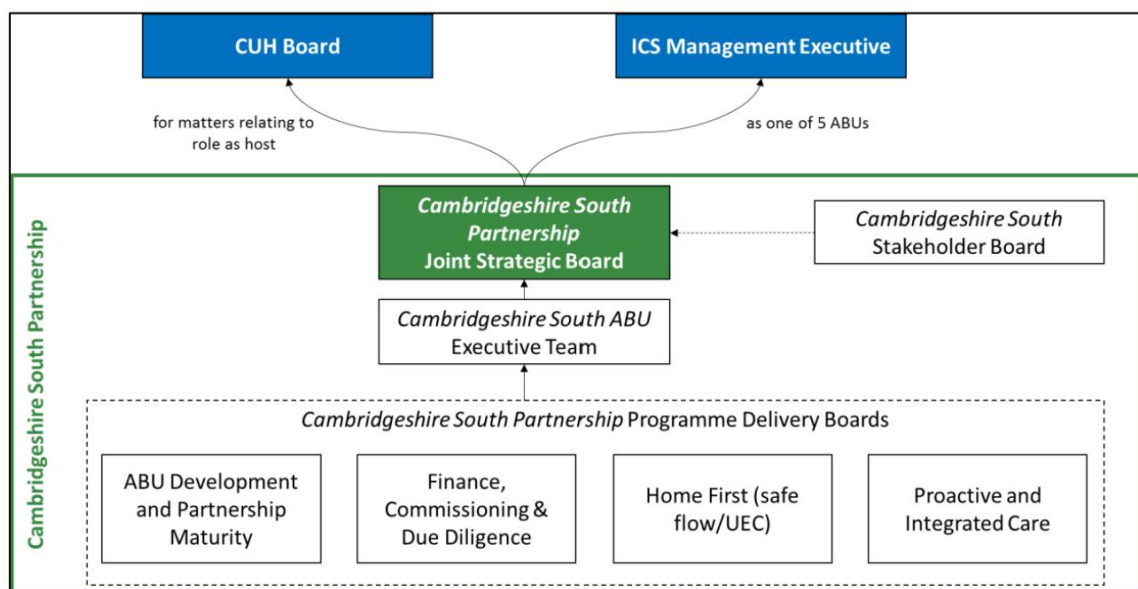
- 4.3 The ICB is a statutory board that oversees the day-to-day running of the NHS locally. It manages a single pot of NHS funding, for which it is directly accountable. There is also a Health and Care Partnership Board that oversees joint and integrated working.
- 4.4 The Health and Wellbeing Board remains responsible for producing a Joint Strategic Needs Assessment and a joint Health and Wellbeing Strategy. The Health & Wellbeing Board and Integrated Care Partnership approved the Joint Cambridgeshire & Peterborough Health and Wellbeing Integrated Care Strategy, when it met on 20 December 2022, after consideration of a “Let’s Talk: Your Health and Care Campaign” consultation report.
- 4.5 The structure diagram below looks to describe how the new Integrated Care System governance interplays with other statutory boards across the Cambridgeshire and Peterborough footprint. This was provided to the county’s Adults and Health Policy and Service Committee in January 2022.

Diagram 1: Statutory Governance Structure across Cambridgeshire and Peterborough



- 4.6 There are two place-based alliances, called Integrated Care Partnerships (ICPs), covering the North and the South of Cambridgeshire. They are responsible for the development and delivery of integrated health and social care through effective partner collaboration to deliver better outcomes for people living in the place (Cambridge City, East Cambridgeshire and South Cambridgeshire).
- 4.7 The vision for the **Cambridgeshire South Care Partnership (CSCP)** is ‘for our citizens to enjoy healthy lives in strong, connected communities’, focused on delivering better, more equitable outcomes with: our people, family and carers; service providers, workforce and carers; our population, and; our Integrated Care System”.
- 4.8 The CSCP is overseen by a **Joint Strategic Board** that provides leadership of the partnership. This Board is jointly chaired by a council member. It is advised by a **Stakeholder Board**. A diagram of the CSCP’s governance is shown below. This was presented to the county’s Adults and Health Committee in December 2022.

Diagram 2: Cambridgeshire South Care Partnership Governance Diagram



4.9 There are currently 6 overarching workstreams being developed by the CSCP that are looking at:

- **Partnership engagement** - to ensure effective partnership working is in place to allow integrated neighbourhoods to thrive
- **An Operating Framework** - following the best available evidence, to drive for integrated care delivery and population health management
- **A two-year strategy** by March 2023 and a long-term strategy in 2023/24 that will set out implementation plans and a supporting investment and redesign plan
- A **'here and now' implementation plan** on priority improvement work for the next 6-12 months
- A **Cambridgeshire South Accountable Business Unit** to ensure it has the capacity and capability to be successful
- **Oversight** of the Cambridgeshire South health and care system and the sustainability of all partners, leading where required to address challenges faced

Integrated Neighbourhoods

4.10 The CSCP has an Integrated Neighbourhood team consisting of 8 Programme and Project Managers that are working closely with all system partners to help establish Integrated Neighbourhoods in each of the Neighbourhoods/Primary Care Networks that cover Cambridge City (and beyond) These are: Cantab (50,000 patients registered); Cam Medical (46,500 patients registered); Cambridge City (50,500 patients registered), and; Cambridge City 4 (56,400 patients registered)

4.11 The vision for Integrated Neighbourhoods is to bring together primary, secondary, community, and social care, housing, voluntary sector and other services to provide proactive and integrated care and improve quality, outcomes and value for money for local citizens.

Partnership Working in Neighbourhoods

4.12 Early examples of partnership working in Neighbourhoods covering Cambridge City include:

- Winter Wellbeing projects to proactively support people who are older or housebound this winter, with all four PCNs working with Care Network Cambridgeshire, Age UK and Caring Together and Public Health
- Events such as a Diabetes Wellness Day held at Cambridge Central Mosque with partner organisations. With 400 attendees. And Healthy You now offering a Monthly Health Hub with health checks and lifestyle advice.
- Piloting single sessions of support with a therapist for children, young people and families with mild to moderate mental health issues within two weeks of referral. A second pilot is now taking place within Younited
- Health Champions recruited by Cambridge Ethnic Community Foundation to deliver health promotion messages and listen to people's experiences. Working in Cambridge Bangladeshi Health Fair
- Supported the City and County Council's Cost of Living Support Pop Ups - promoting events through patient text messaging
- Building relationships between PCN, Healthy You and the Traveller Health Nurse to better meet the needs of people living on Fen Road Travellers Site. Offering health checks and encouraging people to register their ethnicity with their GP surgery.

Provider Collaboratives

4.13 There is also work underway to develop a number of 'Provider Collaboratives' in the area. This is a term that is being used in the NHS to describe the disaggregation of the CCG commissioning functions and work is underway to develop proposals for a Provider Collaborative for Children and Young People, Mental Health and Learning Disabilities.

Health Scrutiny

- 4.14 Health Scrutiny at a county level forms part of the Adult Care and Health Scrutiny Committee, which is a merger to two previous committees, and is carried out in a defined Part 2 of the agenda, where local district council member representatives join the meeting. Health Scrutiny can request evidence of performance against the plans of the ICS focusing on the difference the ICS is making to the lives and outcomes of residents. Councillor Jenny Gawthrope Wood is the council's representative for Health Scrutiny.

Public Health

- 4.15 The Public Health service for Cambridgeshire and Peterborough for this year is subject to a collaborative commissioning pilot operating a new service model that brings together services commissioned by Cambridgeshire County Council, Peterborough City Council, Clinical Commissioning Group (CCG) and NHS England into an integrated service. Public Health continue to commission a comprehensive lifestyle service that includes weight management services.

5. Cambridge Community Safety Partnership (“the CSP”)

- 5.1 The Cambridge CSP continues to seek to understand the community safety issues residents, visitors and local businesses are experiencing and select issues where the CSP feels it can add value and take appropriate collective action to make a difference. It will then assess the effectiveness of its interventions.

Strategic Assessment

- 5.2 At the start of the year (February 2022), following consideration of a Strategic Assessment prepared by the county council's Research Group looking at local trends in crime and disorder an in-depth analysis of progress against the priority areas of the CSP over the preceding year, it was decided by the CSP that the two existing broad priorities for the partnership from the previous year should be retained. These were:

- **Protecting young people against violence and exploitation** (led by Cambridgeshire County Council)

- **Listening to community needs and responding together to reduce harm** (led by Cambridgeshire Constabulary)

Priorities for the Community Safety Plan (2022/23)

- 5.3 The priorities identified in the Strategic Assessment were then incorporated into a Community Safety Plan for 2022/2023 where more specific actions and targets are applied. The plan is mindful of the Cambridgeshire Police and Crime Commissioner's Crime Plan and the requirement to 'have regard' to its priorities.
- 5.4 To help deliver the actions within the plan a multi-agency steering group oversaw "business as usual" operational groups in the year that looked at issues and covered the:
- **The City Centre** – through the City Centre Working Group chaired by the Police: working with stakeholders such as businesses and universities to discuss issues such as night time economy and retail crime
 - **Domestic Abuse** - led by Cambridge City Council: raising awareness, co-ordinating training, and promoting the White Ribbon Campaign
 - **Problem-solving** – through the Problem-Solving Working Group chaired by Cambridge City Council: Multi-Agency Partners discuss cases including hot spots to develop action plans
 - **Street Community** - led by Cambridge City Council: discussing individual cases and developing action plans
- 5.5 For priority one, **safeguarding young people against violence and exploitation**, the aim is to add value to our city's safeguarding efforts by fully encouraging and supporting "contextual safeguarding" and "problem solving" as joint ways of working. This will be achieved by:
- Creating opportunities to support a contextual safeguarding approach.
 - Mapping the service available to young people in the city that can prevent them being exploited into violence and criminality

5.6 A tactical action plan was developed to utilise the different expertise available in the city. This included:

- The creation of a multi-agency contextual safeguarding pilot – the Peer Groups and Places meeting, led by the City Council.
- The creation of contextual safeguarding training, led by the County Council.
- Reviewing and embedding work, such as the local Cambs. Against County Lines projects and Transforming Lives.

5.7 For priority two, **listening to community needs and responding together to reduce harm the aim** is to bring together community concerns on safeguarding the vulnerable, crime and antisocial behaviour and work alongside our communities to create solutions. This will be achieved by:

- Making more opportunities for communities to come together with CCSP partners to address the crime and safety issues that matter to them
- Better informing our communities of what the partnership is doing through a “you said we did” communications plan

5.8 A tactical action plan was developed with the CCSP members using the “Think Communities” approach across all partner agencies to deliver on this priority. Actions included:

- An updated Community Safety Partnership webpage, “Working Together to Keep Cambridge Safe” to make it clearer what the partnership does.
- Police led, resident engagement meetings throughout the year.
- A Residents Crime Survey, ran by the police, as part of a “You Said, We Did” communications approach.
- Door to door engagement with residents about crime and community safety issues.

- A funded (OPCC) Problem Solving Co-ordinator (based in the City Council) working with communities to deliver solutions. The Problem-Solving co-ordinator secured funding for cycle marking kits, rocket tower LED lights to enable winter youth provision, animated education videos on county lines, knife crime and healthy relationships, CCTV cameras, taxi marshals and youth activities.

Annual Review of Work Programme 2022

5.9 Cambridge CSP published its **Annual Review 2022** in October as a public facing document, outlining the work that it has carried out during the year and to help outline actions for the year ahead.

5.10 Achievements in the year for the CSP include:

- **Continuation of the Cambs Against County Lines campaign** - this large-scale project funded by the Police and Crime Commissioner (PCC) and coordinated by the City Council, provided a universal offer to raise awareness amongst young people and adults in Cambridge City and surrounding districts about the risks of County Lines drug dealing. Recently, a survey to find out about drugs, violence and gangs in Cambridge has been carried out.
- **Delivery of a film about County Lines** - supporting local schools to raise awareness of the dangers of county lines among pupils aged 11 to 18, in Year 7 to Year 13, creating a video to be shown in schools to support pupil workshops.
- **Running a 'Save Our Cycles' Campaign** - encouraging the public to record their bike's frame number with a description and then it on Bikeregister.com. This helps the Police trace and return stolen bikes, and bike owners to always lock their bike securely to a fixed object, even if it is only being left for a few minutes.
- **Investing in CCTV enhancements at cycle stands** – as part of the work that Greater Anglia is undertaking at the two city railway stations, following an audit of the cycle stands in the city, to bring about security improvements to strengthen user confidence and prevent cycle related crime.
- **Carrying out additional cycle crime enforcement work** - the Police continue their enforcement work and are using theft data

combined with the CCTV locations to make sure that they are correctly placed to capture incidents and respond where the cycle theft is more evident. For 2022-23, communication will be a focus with the recognition of the need for more promotion of the successes in cycle crime reduction with residents, as this does not currently match public perception.

- **Creation of a Peer Groups and Places pilot** - led by the City Council the Peer Group Meeting is a multi-agency meeting to discuss and explore issues within the local community where there are concerns about a particular group of young people, or a location where young people are known to congregate. The meeting allows for professionals to understand the risk levels young people are subject to and, as a result, appropriately safeguard them.
- **Putting in place local projects as a part of Safer Streets initiative** that aims make women and girls feel safer on our streets as part of the government's Safer Streets Fund. Project work in Cambridge included:
 - **Operation Armour**, that involved the targeting of individuals displaying predatory behaviour, to undertake early intervention to ensure the public were safeguarded and sexual offences were prevented from being committed.
 - **Carrying out training in spotting predatory behaviour** with Taxi Marshalls, CCTV operators, and Security Industry Authority (SIA) qualified door staff.
 - **Running a media campaign** on domestic violence and coercive controlling behaviour, which involved some local schools.
- **Continuing to support work in the City Centre**, including activities for the Purple Flag accreditation award with Cambridge Business Against Crime (CAMBAC), continuing training for staff at licensed premises to be able to identify and respond appropriately to crime and support for campaigns such as 'Ask For Angela', led by CAMBAC, which aims to keep people safe while dating – helping to prevent and reduce sexual violence and vulnerability within the night-time economy.

- 5.11 The council supports the local community and voluntary groups with community safety funding for projects that contribute to reducing crime, the fear of crime and anti-social behaviour. Projects funded in the year include:
- A safe youth area, community and wellbeing area at Cambridge Pride 2022.
 - ASB posters in libraries as part of a multi-agency project to improve safety in libraries in the city.
 - Renewal of the previous 12-month fixed term role for a **Specialist Housing Worker**, who joined the Supported Housing team in January 2022. This role was developed to undertake work across all of Cambridge City Council's services from Domestic Abuse Act Safer Accommodation Funding, and there are sufficient funds for this post to continue until January 2024.
- 5.12 The council's Area Committees consider local areas of concern, highlighted in neighbourhood profiles compiled by the Police and the Council's Community Safety Team, which action and resources can be directed to, to help resolve.

Governance

- 5.13 The Cambridge CSP brings together a number of agencies concerned with tackling and reducing crime and antisocial behaviour in Cambridge. It meets quarterly and its Board is currently chaired by a Head of Service from Cambridge City Council. Councillor Alice Gilderdale, Executive Councillor for Recovery, Employment and Community Safety, is a member of the CSP Board. Councillor Alice Gilderdale is also the Council's representative in the **Cambridgeshire and Peterborough Police and Crime Panel**, which oversees and scrutinises the work of the Police and Crime Commissioner.
- 5.14 The CSP, led by Cambridge City Council, is represented on the Cambridgeshire Countywide High Harms Board, which is chaired by the Police and Crime Commissioner. This Board replaced the County Community Strategic Board in October 2022. Senior leaders discuss governance arrangements, information sharing and strategy.

6. Implications

(a) Financial Implications

The partnerships will be responsible for putting in place new ways of working as part wider transformation plans. By working together with other public agencies the council may be able to achieve more than working on its own.

(b) Staffing Implications

This will depend on how the development of joint working opportunities is taken forward within each partnership.

(c) Equality and Poverty Implications

The partnerships will be looking to target services at those who are most vulnerable and to reduce inequalities, especially health inequalities as much as possible.

(d) Environmental Implications

Systems that promote low carbon use and improve the sustainability of developments will be supported.

(e) Procurement

The partnerships are likely to procure or commission some services to achieve their aims.

(f) Consultation and communication

Where service delivery is modified, local communities and users will be consulted about changes. The HWB consultation is designed to be accessible to a wide range of people to help them understand the proposed priorities.

(g) Community Safety

Vulnerable groups of people will form a large part of the target users of services and it will be important that their wellbeing is taken into account. This is part of the core work of the Cambridge Community Safety Partnership.

7. Appendices

No Appendices are attached.

8. Consultation and communication considerations

Individual funding streams and plans will specify the groups of people to be consulted, especially where targeted work is required.

9. Background papers

Background papers used in the preparation of this report:

Principles of Partnership Working

[The Council's Principles for Partnership Working \(cambridge.gov.uk\)](http://cambridge.gov.uk)

Cambridgeshire County Council's Adults and Health Committee Meetings

[Council and committee meetings - Cambridgeshire County Council > Committees > Adults and Health \(cmis.uk.com\)](http://cmis.uk.com)

Integrated Care System (ICS) - Cambridgeshire County Council position paper

[Document.ashx \(cmis.uk.com\)](http://cmis.uk.com)

Realising the potential of the Integration of Health and Social Care

[Document.ashx \(cmis.uk.com\)](http://cmis.uk.com)

Cambridgeshire South Care Partnership (ICP) Update

[Document.ashx \(cmis.uk.com\)](http://cmis.uk.com)

Joint Cambridgeshire and Peterborough Health and Wellbeing Board / Integrated Care Partnership meetings

[Joint Cambridgeshire & Peterborough Health & Wellbeing Board/ICP | CPICS Website](http://cpics.org.uk)

Cambridgeshire & Peterborough Health and Wellbeing and Integrated Care Strategy summary

[Joint Cambridgeshire & Peterborough Health & Wellbeing Board/ICP | CPICS Website](http://cpics.org.uk)

Let's Talk: Your Health and Care Final Report

https://www.cpics.org.uk/hwb-icp-meetings?media_item=2276&media_type=10#file-viewer

Joint Strategic Needs Assessments

<http://cambridgeshireinsight.org.uk/jsna>

Annual Public Health Report

<http://cambridgeshireinsight.org.uk/health/aphr>

Public Health Profiles

https://fingertips.phe.org.uk/profile/health-profiles/area-search-results/E07000008?place_name=Cambridge&search_type=parent-area

Working together to keep Cambridge safe

[Cambridge Community Safety Partnership: Working together to keep Cambridge safe - Cambridge City Council](#)

Cambs Against County Lines

<https://www.cambridge.gov.uk/cambs-against-county-lines>

Save our Cycles campaign

<https://www.camcycle.org.uk/resources/cycletheft/>

Papers for Community Safety Partnership, including End of year Review, Strategic Assessments, Community Safety Plan 2020/21 and agenda and minutes:

<https://www.cambridge.gov.uk/cambridge-community-safety-partnership>

Cambridgeshire Police and Crime Panel

[Committee details - Cambridgeshire Police and Crime Panel | Peterborough City Council](#)

British Crime Survey Findings

<https://www.crimesurvey.co.uk/en/SurveyResults.html>

10. Inspection of papers

To inspect the background papers or if you have a query on the report please contact GRAHAM SAINT, CORPORATE STRATEGY OFFICER, tel: 01223 - 457044, email: graham.saint@cambridge.gov.uk.