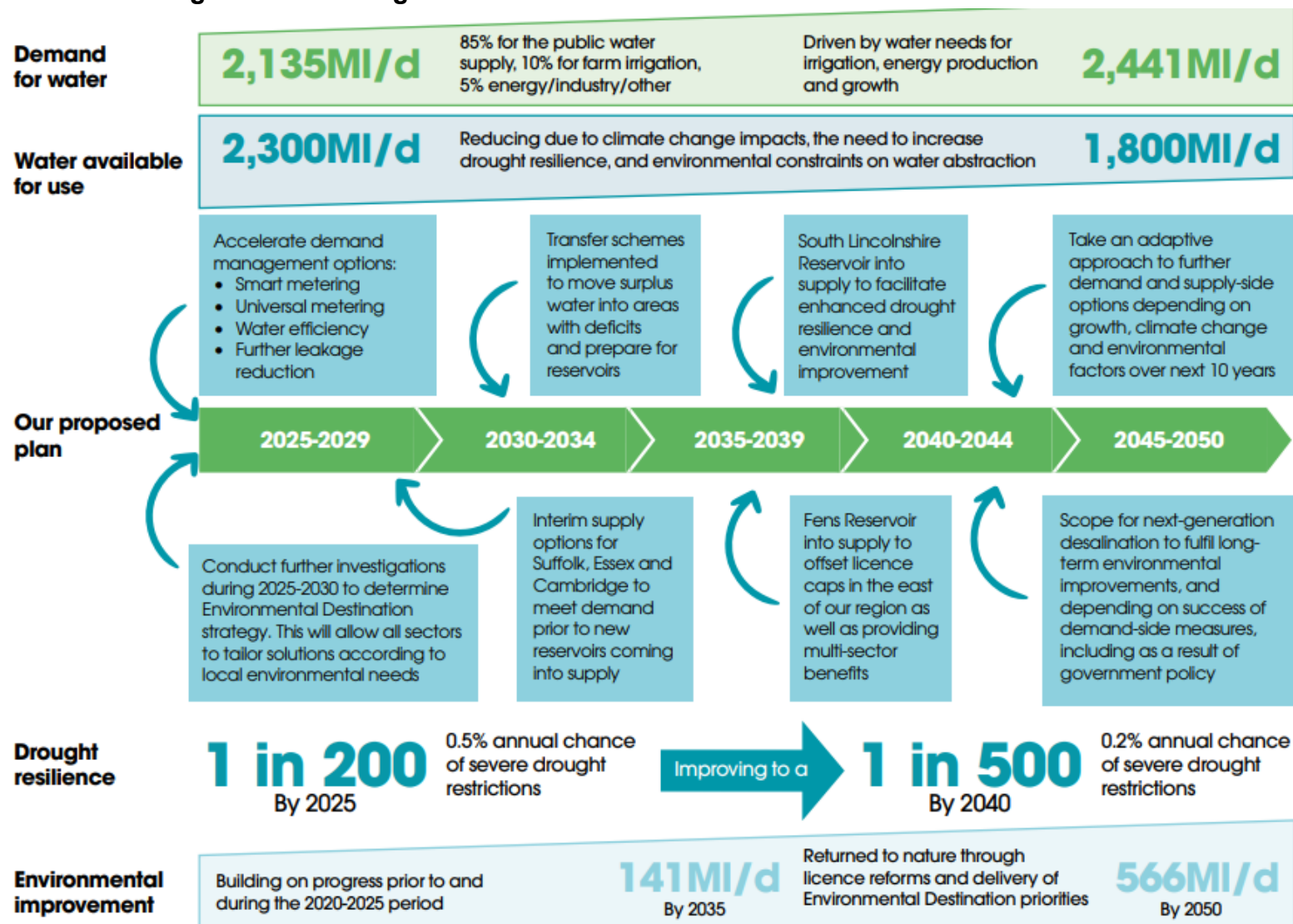


## **Appendix 2**

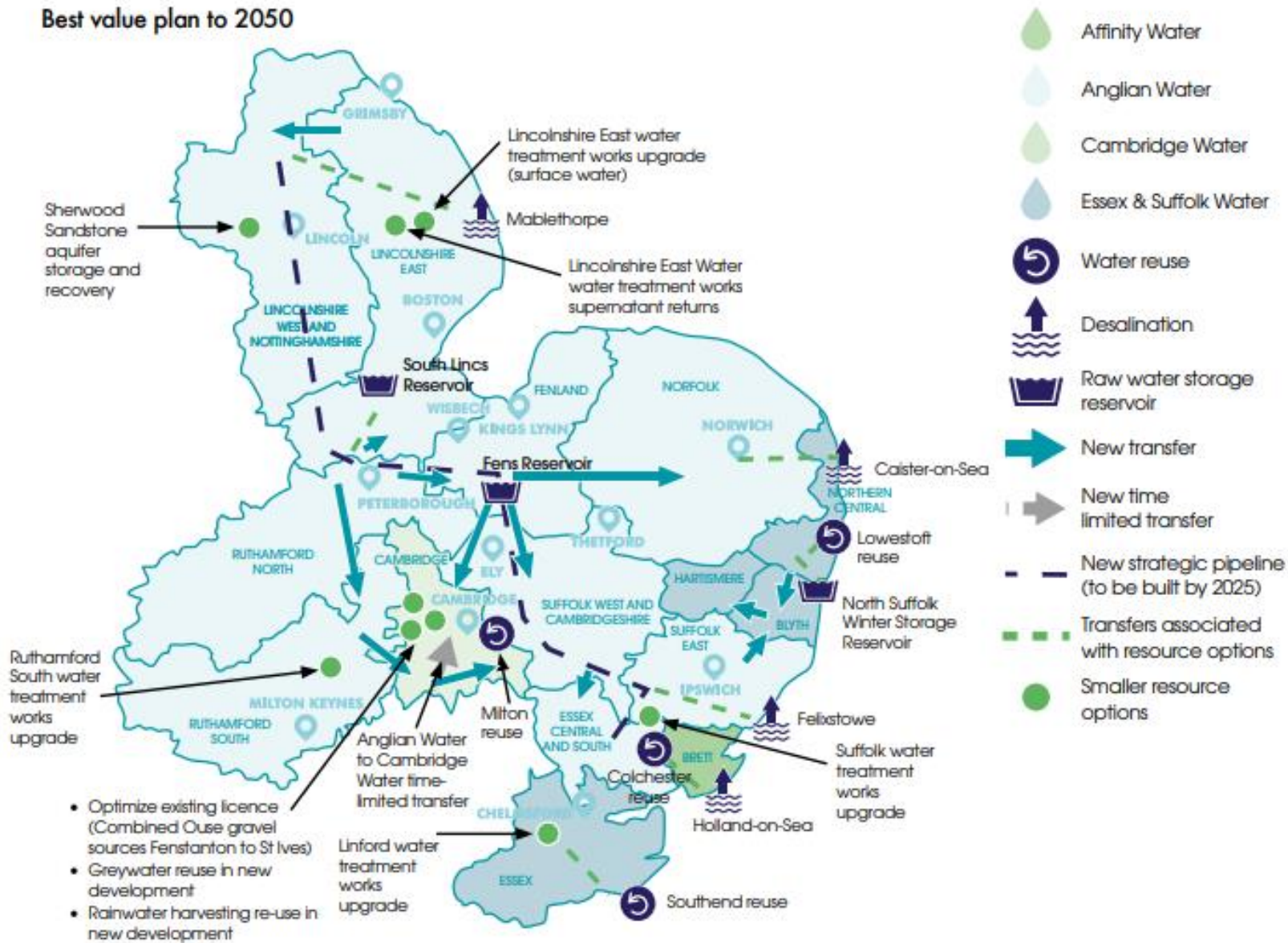
### **Key Summary Diagrams from Draft Regional Water Resources Plan for Eastern England**

## WRE's Draft Regional Plan at a glance



All figures are in megalitres per day (MI/d). A megalitre is a million litres of water.

# Best value plan to 2050



-  Affinity Water
-  Anglian Water
-  Cambridge Water
-  Essex & Suffolk Water
-  Water reuse
-  Desalination
-  Raw water storage reservoir
-  New transfer
-  New time limited transfer
-  New strategic pipeline (to be built by 2025)
-  Transfers associated with resource options
-  Smaller resource options