



Ferry Path - Project Update:

Improving biodiversity and quality of life

June 19, 2022

Hal Balodis, Fiona & Henry Bird, Steve Cheek, Susanna Clements, Katherine Dickens, Charles Hattersley, Tim Hill, Miranda Ponek

Improving Ferry Path

There was unanimous agreement that while Ferry Path had its own charm, we could increase its biodiversity by providing more habitat for bees, hedgehogs, frogs and birds. The committee believed that the humans who used the path each day would also benefit.



Ferry Path – The way it was in 2020.



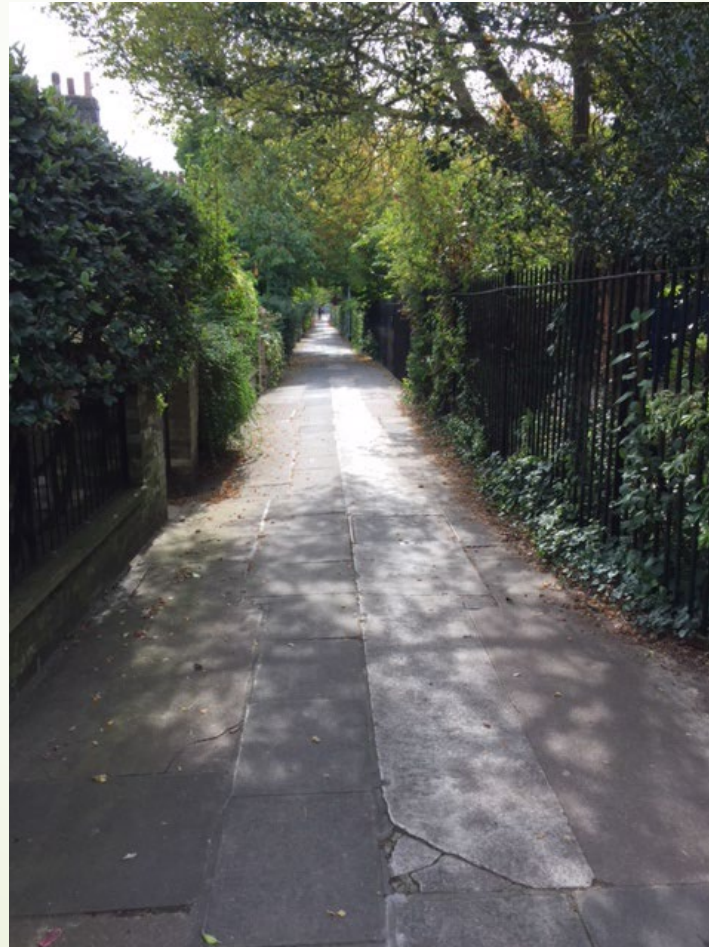
Ferry Path lacked the qualities of other Cambridge pedestrian streets

Planters on Portugal Place
provide nectar for bees

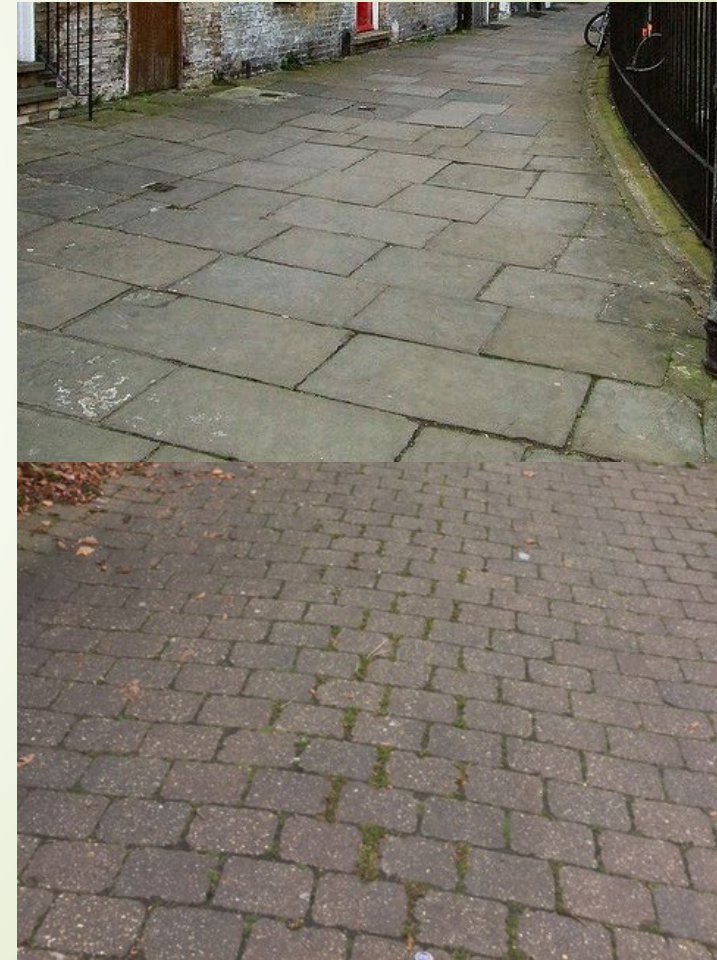


*Ferry Path, the widest
walking street in Cambridge
can make a bit of room to
accommodate biodiversity.*

Climbers on the fencing
at Melbourne Place
provide habitat



All have paving stones or brick:
more attractive than asphalt



The Ferry Landing – as it was in 2020

Frequently seen:

- Drug deals
- Drug taking
- Heavy drinking
- Human defecation
- Rough sleeping
(needles, bottles, used toilet paper and gas canisters abound.)

Never seen:

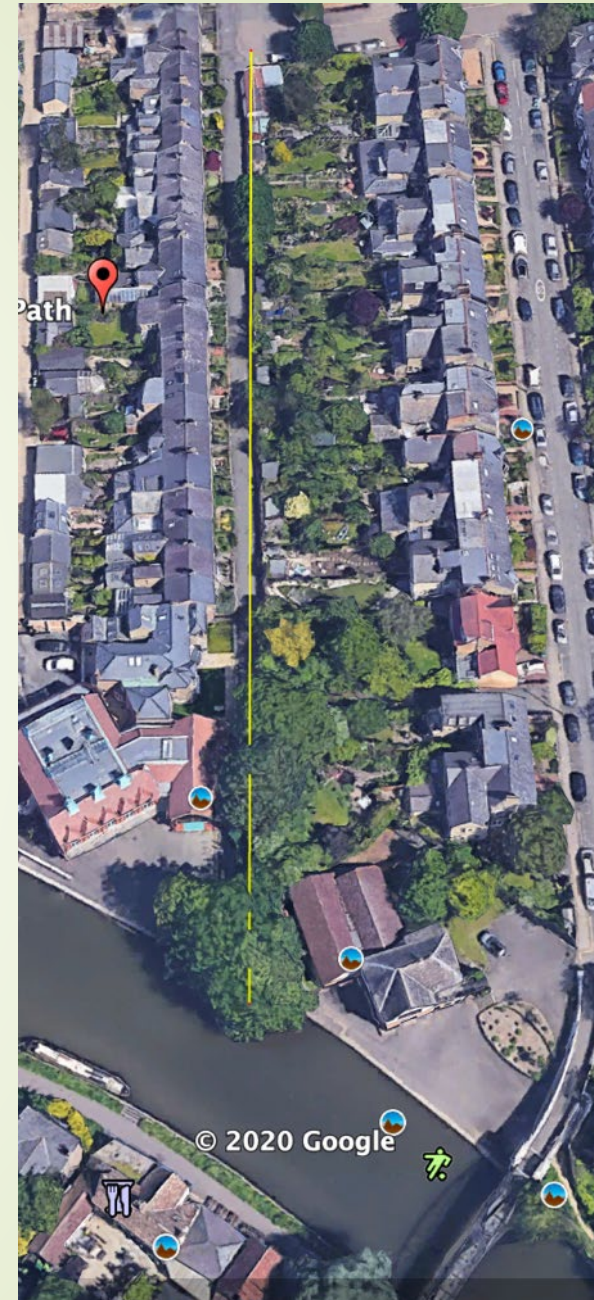
- Children playing
- Community Seniors taking a stroll down the path to the river.



Vision and Goals

Transform the mostly barren fence side of Ferry Path and the Ferry Landing into a strip of sustainable plants and flowers.

1. Provide sustainable, low maintenance plantings for bees, butterflies, hedgehogs and other local wildlife in support of both local and national biodiversity strategies.
2. Improve the aesthetics of the Path and the landing.
3. Improve safety by showing the area is well-cared for. (Studies show crime decreases in well-tended areas.)
4. Build community by bringing neighbours together to both work on the design and tend to the plantings.



Proposed to Cambridgeshire County: Installation of 3 flower beds and 2 tree beds.

Lesser Calamint
Calamintha nepeta
Helenium autumnale
Geranium rozanne
Echium vulgare perennial
Borage
Teucrium fruticans
evergreen
Lavendar
Rosemary
Wild Marjoram Origanum
vulgare perennial
Thyme
Purple Loosestrife Lythrum
salicaria Chamerion
augustifolium Buddleia

Flower Bed 1 - Herbs
Wild Marjoram, Thyme etc.

Flower Bed 2 – Tall plants
Loosestrife and Willowherb etc.

Flower Bed 3 – Flowering Plants
Calamint etc.

Climbers for the fence

Landing Zone
Climbers, Shade-loving plants

Dog Rose
(Canina rosa)
Clematis
Honeysuckle Lonicera
periclymenum
Belgica
Serotina

Planters ● Fruit Trees ●

[Fruit tree selection supplied by City Arborist.
Walkable gravel bedding for each tree is 1.5 meters.
Tree trunk is ~ 0.75 m from fence]

For illustration
only. Not to
scale.

Planters

~170 m

Hamilton

Bed 1
1.0 x 5 m

3 Pear Trees

Bed 2
1.0 x 5 m

3 Persian
Ironwood
Trees

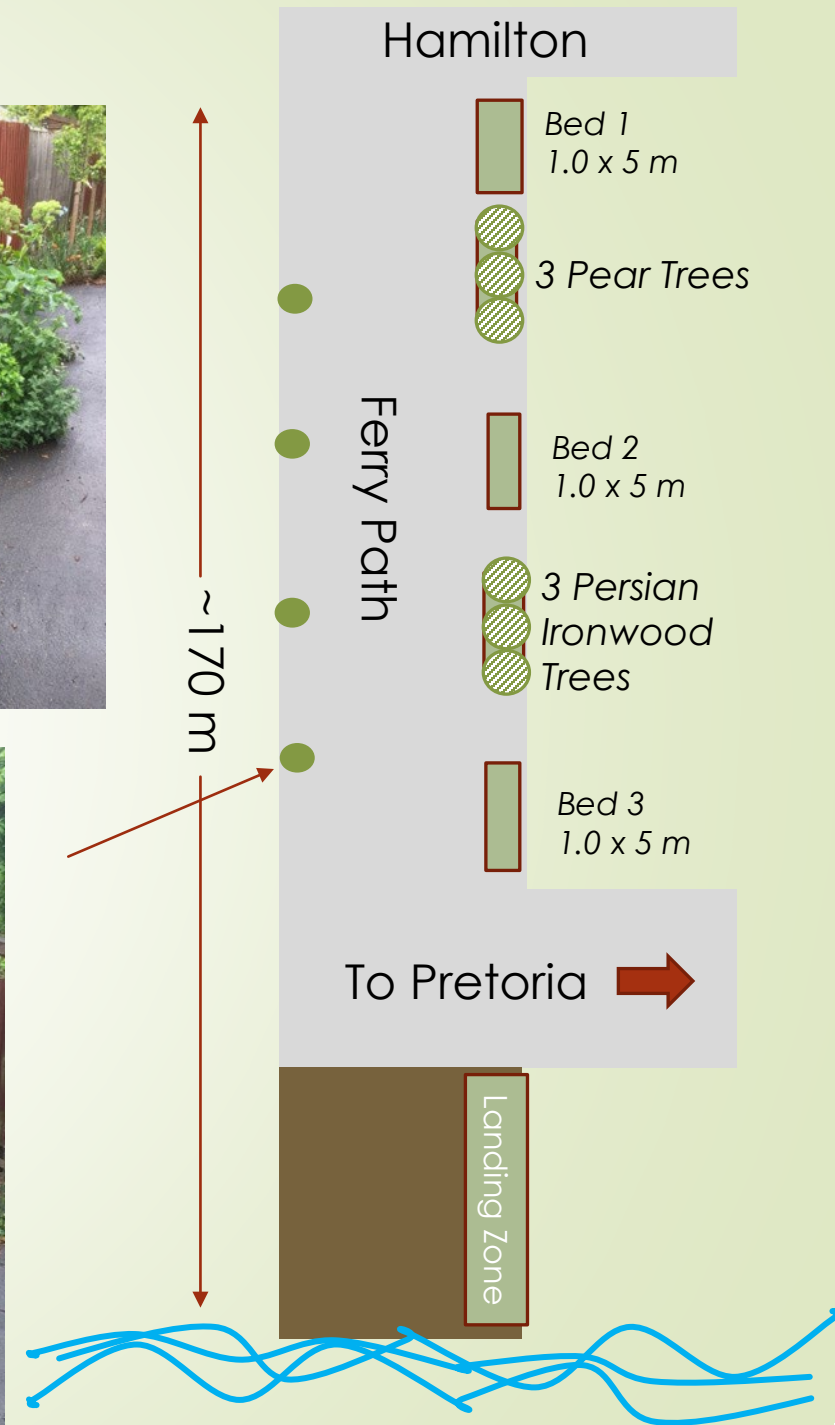
Bed 3
1.0 x 5 m

Ferry Path

To Pretoria →

Landing Zone

Ferry Path as it is now



Ferry Landing as it is now



⋮
⋮



Bed 3
1.0 x 5 m

To Pretoria →

Landing Zone



River Cam

Outcomes

➤ Enhanced the biodiversity and human appreciation for Ferry Path.

- ❑ Established a protective habitat for bees, hedgehogs, birds, frogs
- ❑ Community is derived from a well-designed public green space
- ❑ Community solidarity gained from working on a project for the common good
- ❑ Greater access / use of the Landing as a pleasant destination for the community

➤ Provided an area where neighbours can safely gather.

The improvements have eliminated or dramatically reduced:

- ❑ Drug dealing
- ❑ Loitering
- ❑ Littering
- ❑ Rough sleeping

Key Documents

► City of Cambridge


- Environmental Policy Statement
<https://www.cambridge.gov.uk/media/6711/environment-policy-statement.pdf>
- Nature Conservation Strategy "Enhancing Biodiversity"
<https://files.cambridge.gov.uk/public/ldf/coredocs/RD-NE/rd-ne-080.pdf>

► Cambridgeshire County

- Protecting and providing green space
<https://www.cambridgeshire.gov.uk/residents/libraries-leisure-culture/arts-green-spaces-activities/protecting-and-providing-green-space>

► National Government

- Safer Places. The Planning System and Crime Prevention
Office of the Deputy Prime Minister
https://assets.publishing.service.gov.uk/government/uploads/system/uploads/attachment_data/file/7784/147627.pdf
- Biodiversity duty: public authority duty to have regard to conserving biodiversity
<https://www.gov.uk/guidance/biodiversity-duty-public-authority-duty-to-have-regard-to-conserving-biodiversity>



Thanks to our partners from the City and County who supported the removal of asphalt and the digging of the beds. Thanks also for the donations of our neighbours' time and money that made this project possible.

