

**21/03224/FUL**

**Dismantling and removal of two existing radars and the construction of a new radar and other associated works**

**Land at Cambridge Airport**

# Location Plan

The Westering

Hangar H16

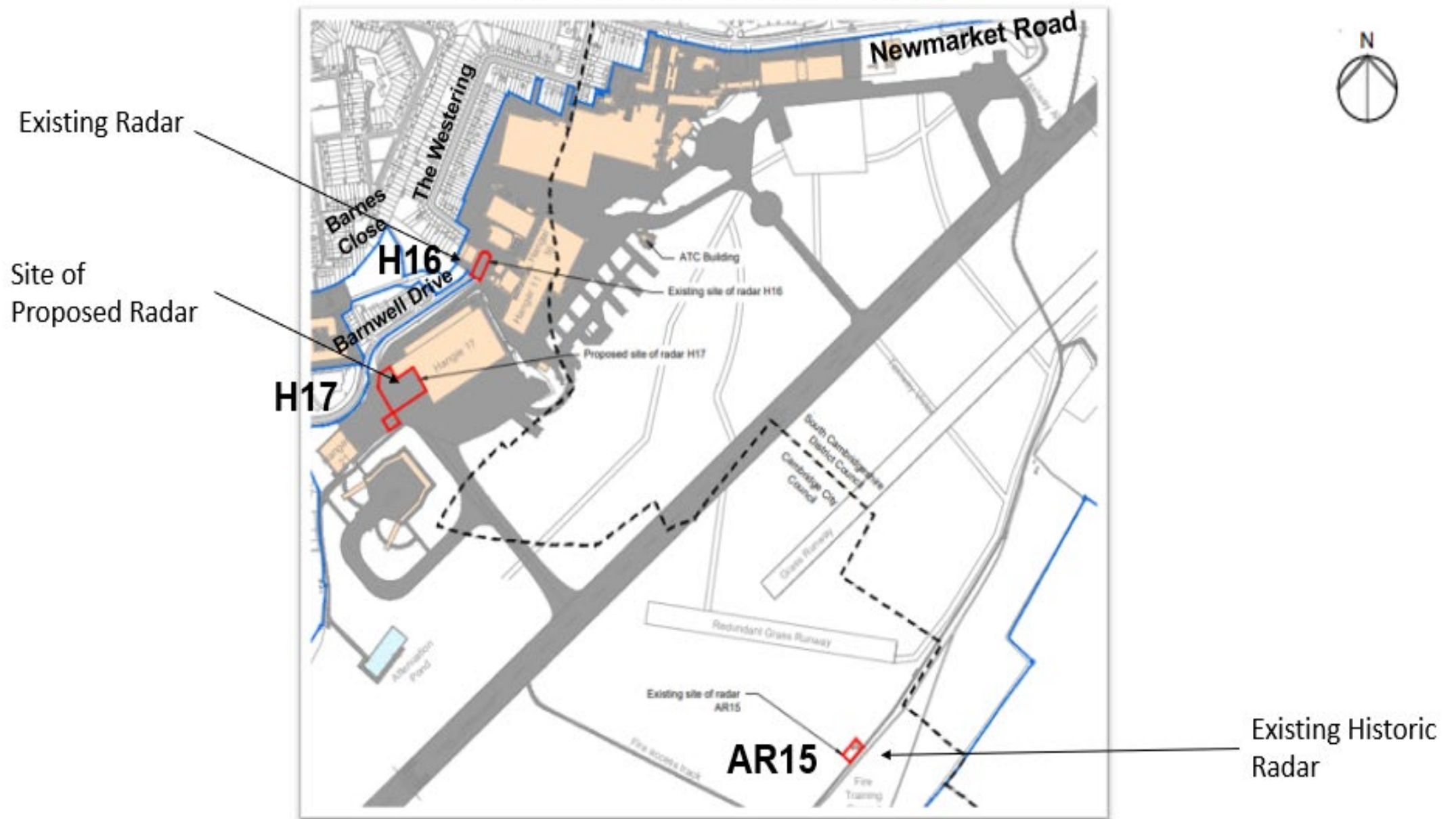
Hangar H17

Primary runway

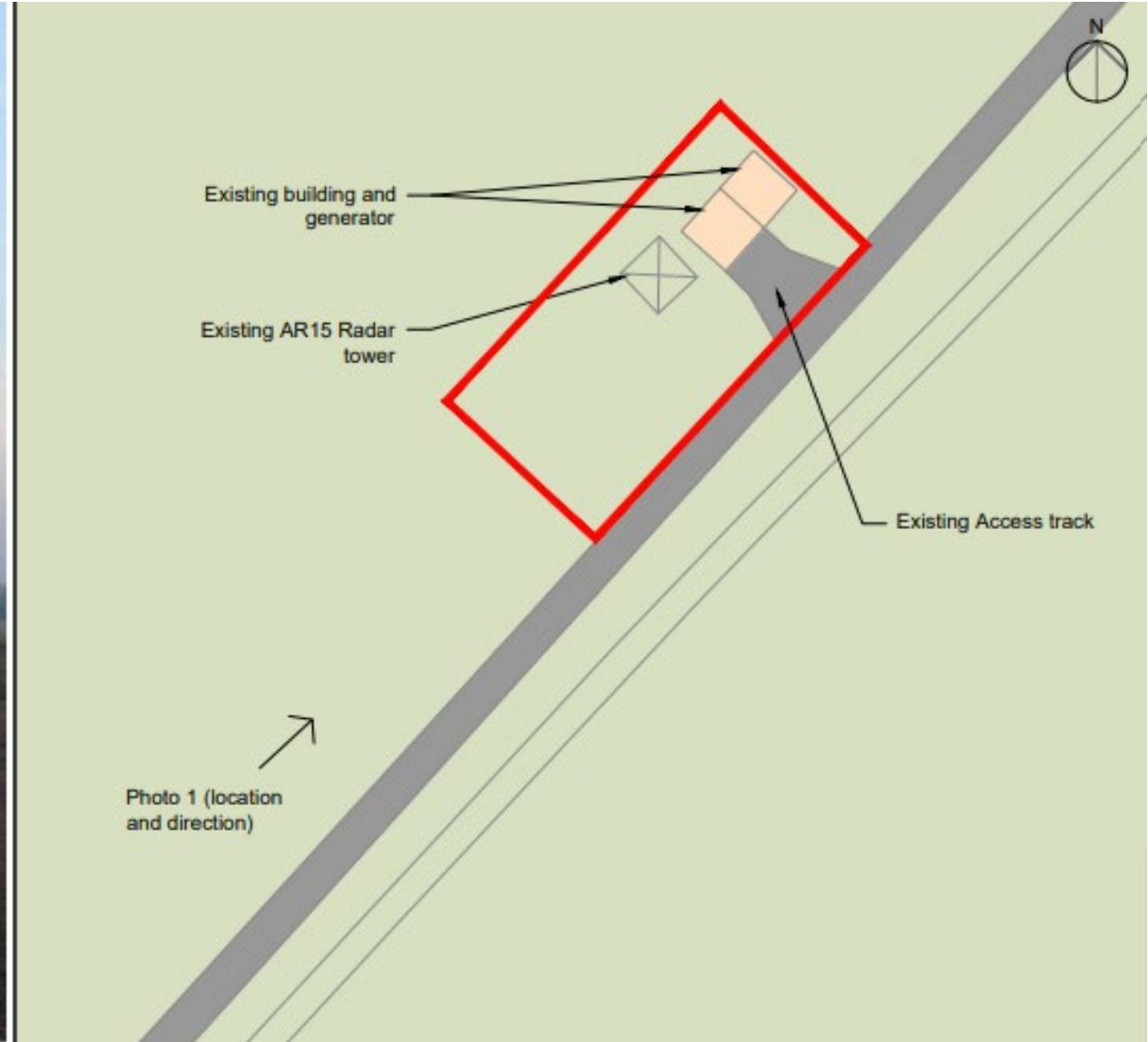
Fire training  
ground and  
access track



# Site Location Plan



# Existing Site and Radar – AR15

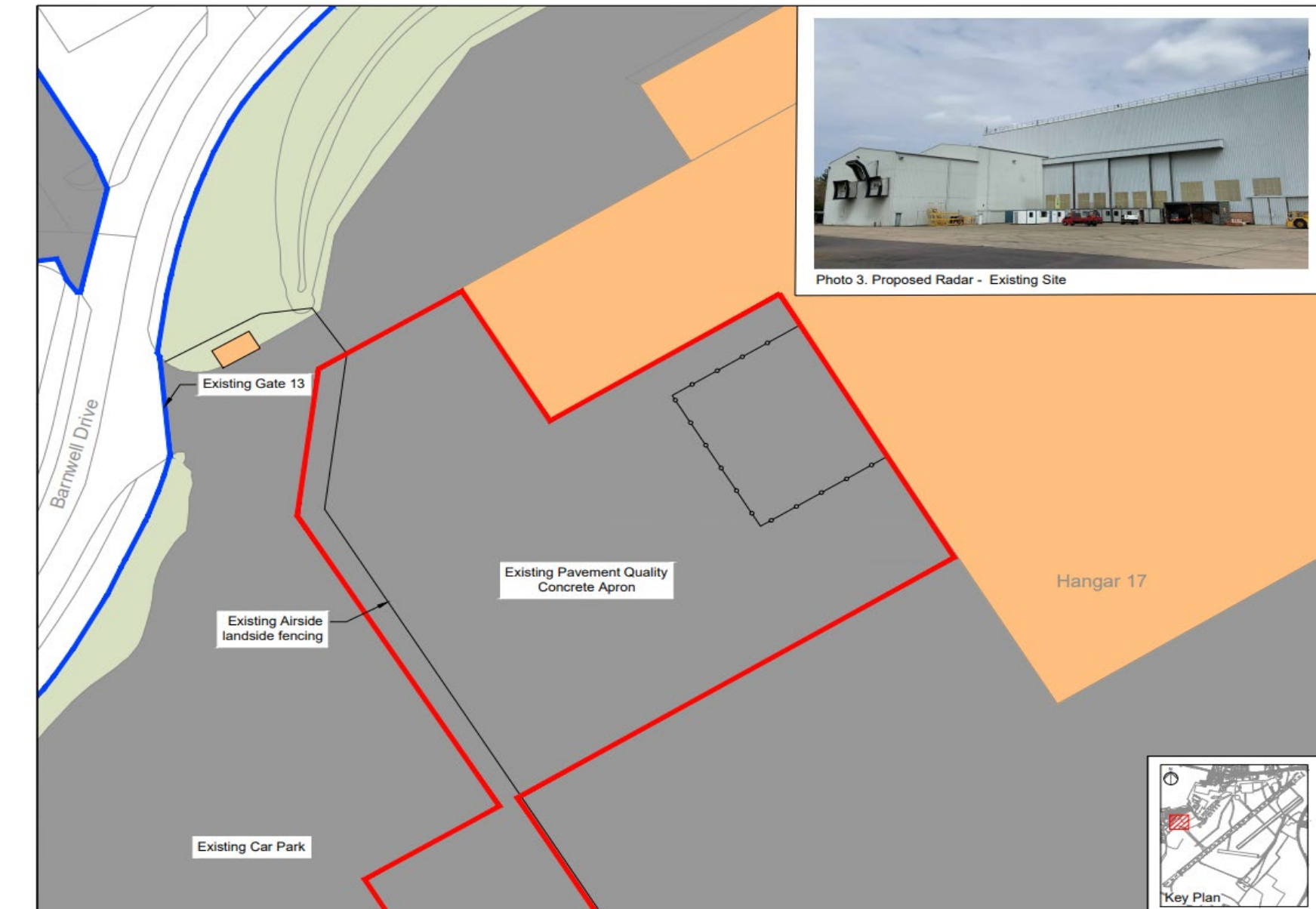




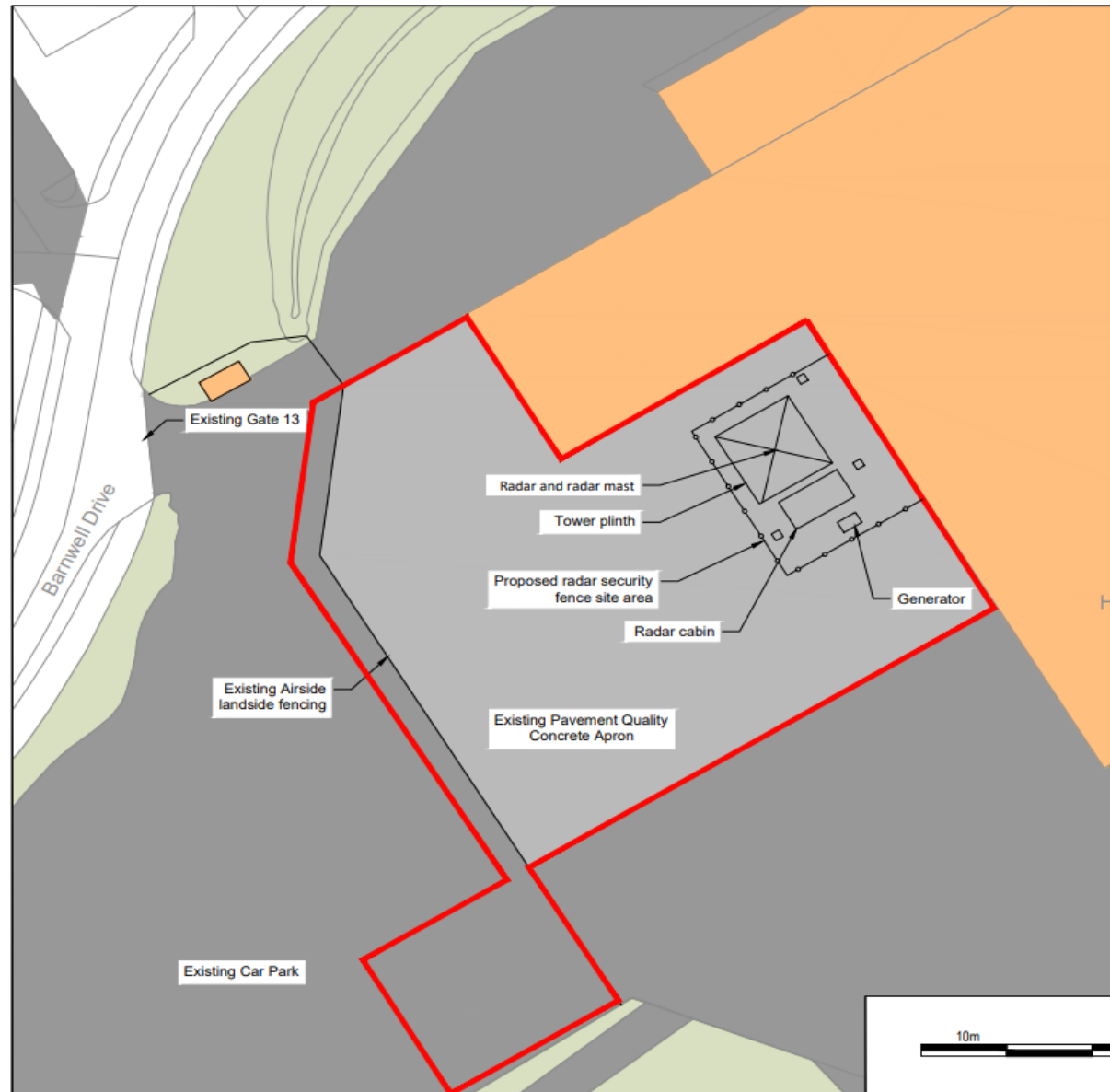
# Existing Site and Radar - H16



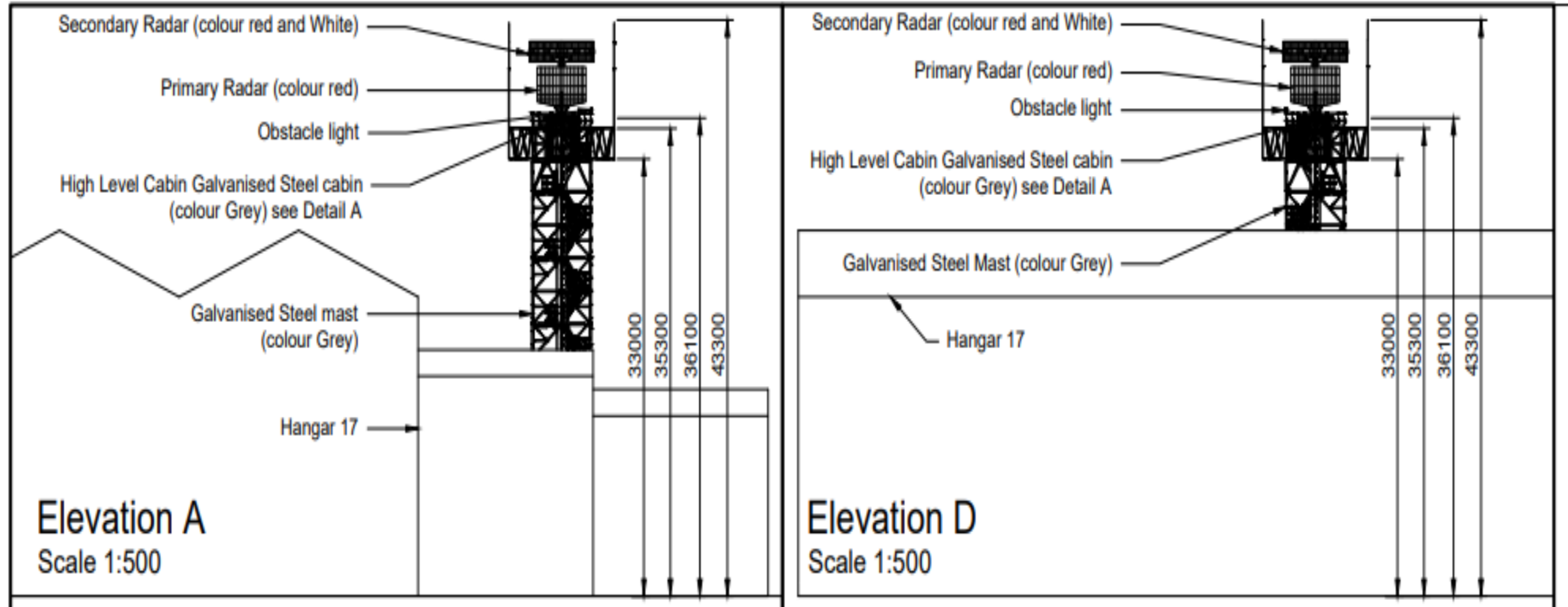
# Existing Site Layout – Proposed H17 Radar



# Proposed Site Layout – H17 Radar

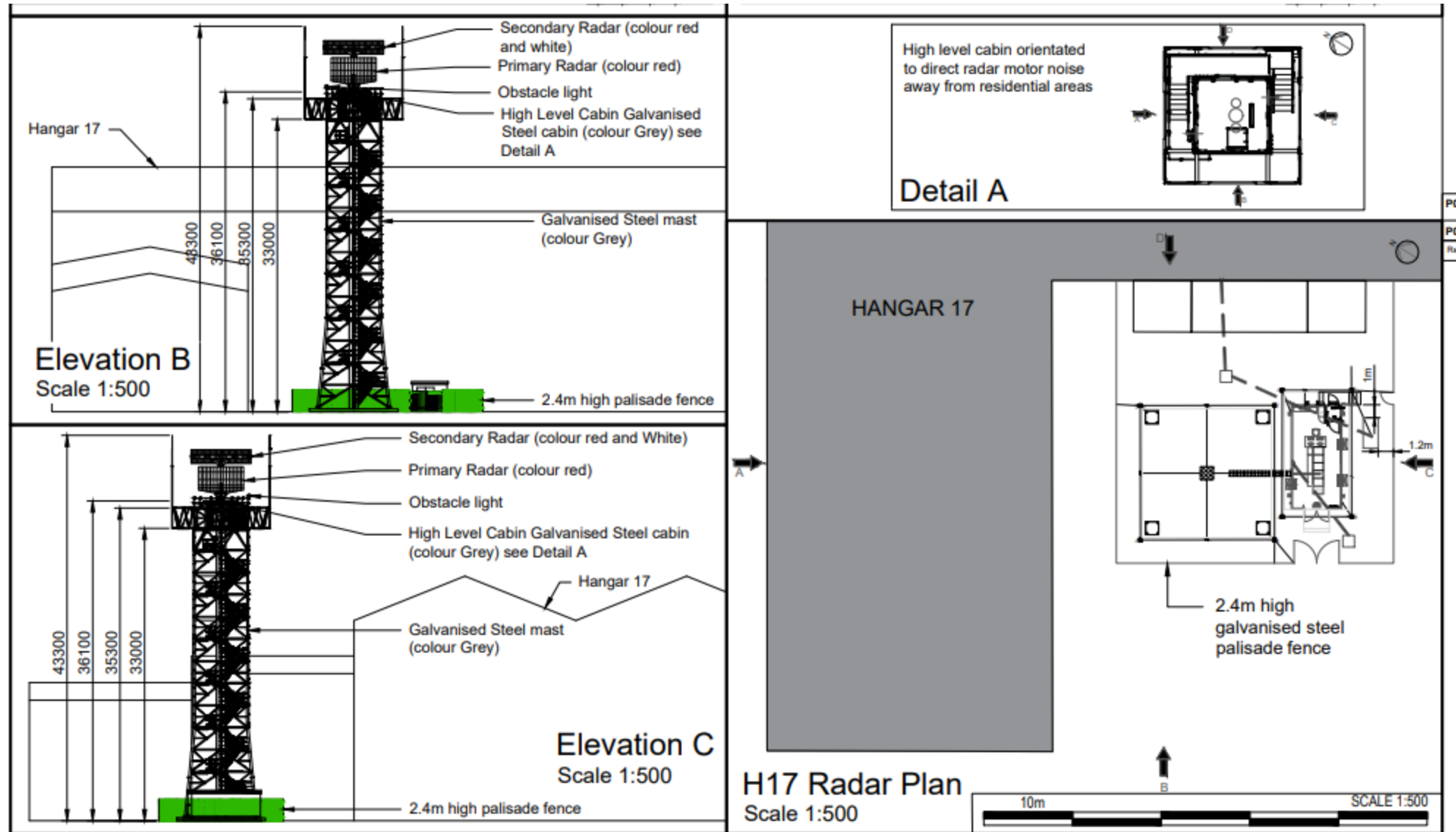


# H17 Radar - Proposed Elevations





# H17 Radar - Proposed Elevations



# LVIA Key Viewpoints (H17 Radar)

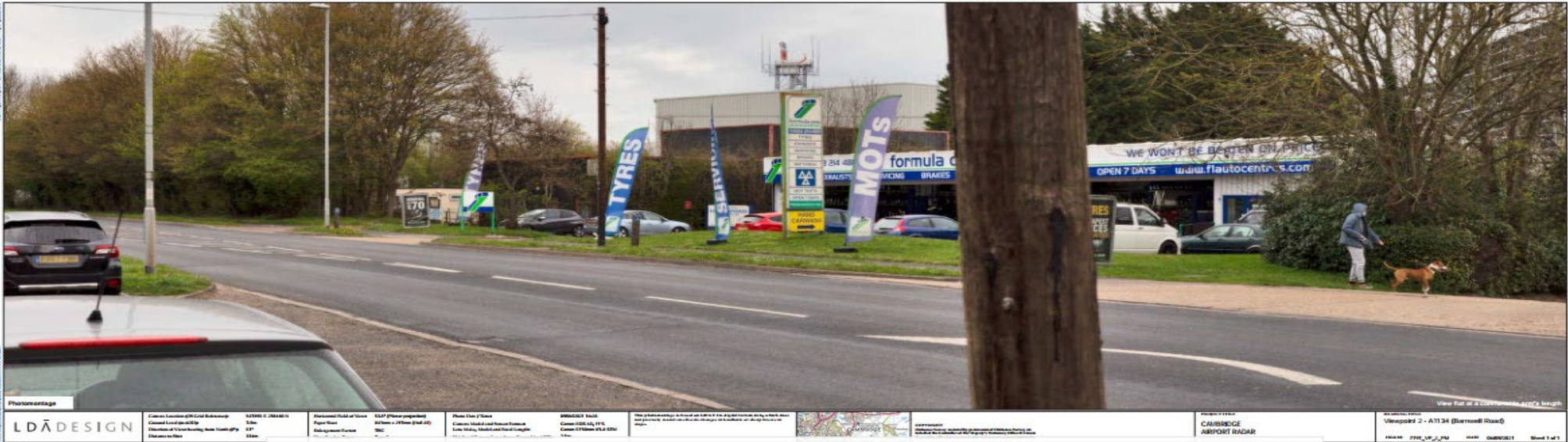
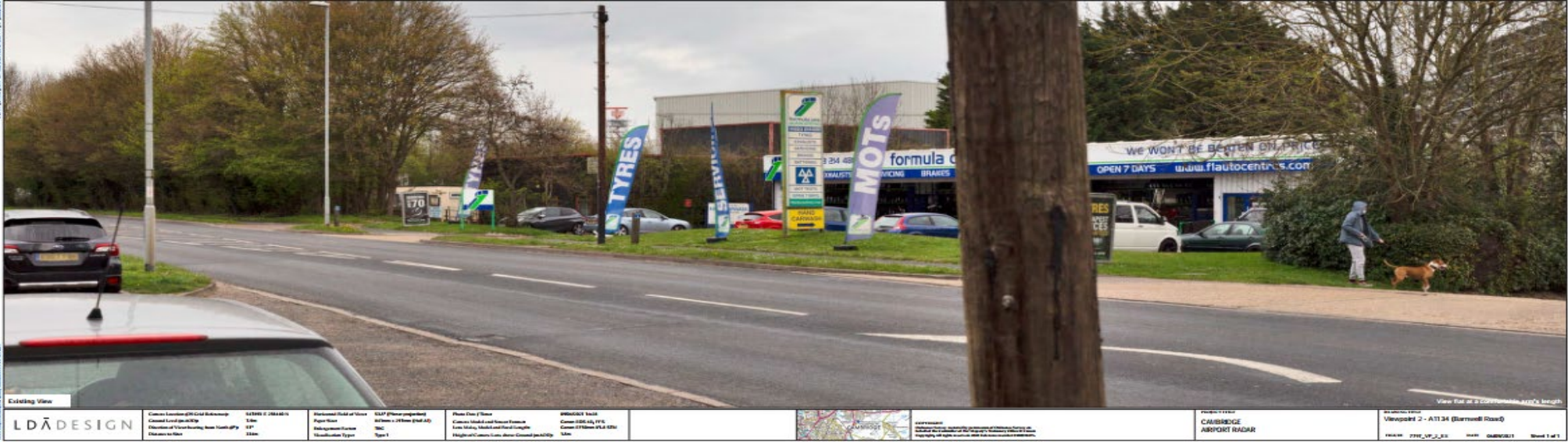
## Viewpoint 1: Commercial Area Near Barnwell Drive – existing view and photomontage





## LVIA Key Viewpoints (H17 Radar)

Viewpoint 2: A1134 (Barnwell Road) – existing view and photomontage





# LVIA Key Viewpoints (H17 Radar)

## Viewpoint 3: Peverel Road – existing view and photomontage





**Existing View**

**LDADDESIGN**

Current Location: 670 Great Brunswick Road, Cambridge CB2 3RQ  
 Current Level: 4m AOD  
 Elevation at Viewpoint: Near 10m AOD  
 Elevation at Site: 4m AOD

STAGE 1 - 2021/22  
 Stage 1: 10m AOD  
 Stage 2: 10m AOD  
 Stage 3: 10m AOD

STAGE 2 - 2022/23  
 Stage 2: 10m AOD  
 Stage 3: 10m AOD  
 Stage 4: 10m AOD

STAGE 3 - 2023/24  
 Stage 3: 10m AOD  
 Stage 4: 10m AOD  
 Stage 5: 10m AOD

STAGE 4 - 2024/25  
 Stage 4: 10m AOD  
 Stage 5: 10m AOD  
 Stage 6: 10m AOD

STAGE 5 - 2025/26  
 Stage 5: 10m AOD  
 Stage 6: 10m AOD  
 Stage 7: 10m AOD

STAGE 6 - 2026/27  
 Stage 6: 10m AOD  
 Stage 7: 10m AOD  
 Stage 8: 10m AOD

STAGE 7 - 2027/28  
 Stage 7: 10m AOD  
 Stage 8: 10m AOD  
 Stage 9: 10m AOD

STAGE 8 - 2028/29  
 Stage 8: 10m AOD  
 Stage 9: 10m AOD  
 Stage 10: 10m AOD

STAGE 9 - 2029/30  
 Stage 9: 10m AOD  
 Stage 10: 10m AOD  
 Stage 11: 10m AOD

STAGE 10 - 2030/31  
 Stage 10: 10m AOD  
 Stage 11: 10m AOD  
 Stage 12: 10m AOD

STAGE 11 - 2031/32  
 Stage 11: 10m AOD  
 Stage 12: 10m AOD  
 Stage 13: 10m AOD

STAGE 12 - 2032/33  
 Stage 12: 10m AOD  
 Stage 13: 10m AOD  
 Stage 14: 10m AOD

STAGE 13 - 2033/34  
 Stage 13: 10m AOD  
 Stage 14: 10m AOD  
 Stage 15: 10m AOD

STAGE 14 - 2034/35  
 Stage 14: 10m AOD  
 Stage 15: 10m AOD  
 Stage 16: 10m AOD

STAGE 15 - 2035/36  
 Stage 15: 10m AOD  
 Stage 16: 10m AOD  
 Stage 17: 10m AOD

STAGE 16 - 2036/37  
 Stage 16: 10m AOD  
 Stage 17: 10m AOD  
 Stage 18: 10m AOD

STAGE 17 - 2037/38  
 Stage 17: 10m AOD  
 Stage 18: 10m AOD  
 Stage 19: 10m AOD

STAGE 18 - 2038/39  
 Stage 18: 10m AOD  
 Stage 19: 10m AOD  
 Stage 20: 10m AOD

STAGE 19 - 2039/40  
 Stage 19: 10m AOD  
 Stage 20: 10m AOD  
 Stage 21: 10m AOD

STAGE 20 - 2040/41  
 Stage 20: 10m AOD  
 Stage 21: 10m AOD  
 Stage 22: 10m AOD

STAGE 21 - 2041/42  
 Stage 21: 10m AOD  
 Stage 22: 10m AOD  
 Stage 23: 10m AOD

STAGE 22 - 2042/43  
 Stage 22: 10m AOD  
 Stage 23: 10m AOD  
 Stage 24: 10m AOD

STAGE 23 - 2043/44  
 Stage 23: 10m AOD  
 Stage 24: 10m AOD  
 Stage 25: 10m AOD

STAGE 24 - 2044/45  
 Stage 24: 10m AOD  
 Stage 25: 10m AOD  
 Stage 26: 10m AOD

STAGE 25 - 2045/46  
 Stage 25: 10m AOD  
 Stage 26: 10m AOD  
 Stage 27: 10m AOD

STAGE 26 - 2046/47  
 Stage 26: 10m AOD  
 Stage 27: 10m AOD  
 Stage 28: 10m AOD

STAGE 27 - 2047/48  
 Stage 27: 10m AOD  
 Stage 28: 10m AOD  
 Stage 29: 10m AOD

STAGE 28 - 2048/49  
 Stage 28: 10m AOD  
 Stage 29: 10m AOD  
 Stage 30: 10m AOD

STAGE 29 - 2049/50  
 Stage 29: 10m AOD  
 Stage 30: 10m AOD  
 Stage 31: 10m AOD

STAGE 30 - 2050/51  
 Stage 30: 10m AOD  
 Stage 31: 10m AOD  
 Stage 32: 10m AOD

STAGE 31 - 2051/52  
 Stage 31: 10m AOD  
 Stage 32: 10m AOD  
 Stage 33: 10m AOD

STAGE 32 - 2052/53  
 Stage 32: 10m AOD  
 Stage 33: 10m AOD  
 Stage 34: 10m AOD

STAGE 33 - 2053/54  
 Stage 33: 10m AOD  
 Stage 34: 10m AOD  
 Stage 35: 10m AOD

STAGE 34 - 2054/55  
 Stage 34: 10m AOD  
 Stage 35: 10m AOD  
 Stage 36: 10m AOD

STAGE 35 - 2055/56  
 Stage 35: 10m AOD  
 Stage 36: 10m AOD  
 Stage 37: 10m AOD

STAGE 36 - 2056/57  
 Stage 36: 10m AOD  
 Stage 37: 10m AOD  
 Stage 38: 10m AOD

STAGE 37 - 2057/58  
 Stage 37: 10m AOD  
 Stage 38: 10m AOD  
 Stage 39: 10m AOD

STAGE 38 - 2058/59  
 Stage 38: 10m AOD  
 Stage 39: 10m AOD  
 Stage 40: 10m AOD

STAGE 39 - 2059/60  
 Stage 39: 10m AOD  
 Stage 40: 10m AOD  
 Stage 41: 10m AOD

STAGE 40 - 2060/61  
 Stage 40: 10m AOD  
 Stage 41: 10m AOD  
 Stage 42: 10m AOD

STAGE 41 - 2061/62  
 Stage 41: 10m AOD  
 Stage 42: 10m AOD  
 Stage 43: 10m AOD

STAGE 42 - 2062/63  
 Stage 42: 10m AOD  
 Stage 43: 10m AOD  
 Stage 44: 10m AOD

STAGE 43 - 2063/64  
 Stage 43: 10m AOD  
 Stage 44: 10m AOD  
 Stage 45: 10m AOD

STAGE 44 - 2064/65  
 Stage 44: 10m AOD  
 Stage 45: 10m AOD  
 Stage 46: 10m AOD

STAGE 45 - 2065/66  
 Stage 45: 10m AOD  
 Stage 46: 10m AOD  
 Stage 47: 10m AOD

STAGE 46 - 2066/67  
 Stage 46: 10m AOD  
 Stage 47: 10m AOD  
 Stage 48: 10m AOD

STAGE 47 - 2067/68  
 Stage 47: 10m AOD  
 Stage 48: 10m AOD  
 Stage 49: 10m AOD

STAGE 48 - 2068/69  
 Stage 48: 10m AOD  
 Stage 49: 10m AOD  
 Stage 50: 10m AOD

STAGE 49 - 2069/70  
 Stage 49: 10m AOD  
 Stage 50: 10m AOD  
 Stage 51: 10m AOD

STAGE 50 - 2070/71  
 Stage 50: 10m AOD  
 Stage 51: 10m AOD  
 Stage 52: 10m AOD

STAGE 51 - 2071/72  
 Stage 51: 10m AOD  
 Stage 52: 10m AOD  
 Stage 53: 10m AOD

STAGE 52 - 2072/73  
 Stage 52: 10m AOD  
 Stage 53: 10m AOD  
 Stage 54: 10m AOD

STAGE 53 - 2073/74  
 Stage 53: 10m AOD  
 Stage 54: 10m AOD  
 Stage 55: 10m AOD

STAGE 54 - 2074/75  
 Stage 54: 10m AOD  
 Stage 55: 10m AOD  
 Stage 56: 10m AOD

STAGE 55 - 2075/76  
 Stage 55: 10m AOD  
 Stage 56: 10m AOD  
 Stage 57: 10m AOD

STAGE 56 - 2076/77  
 Stage 56: 10m AOD  
 Stage 57: 10m AOD  
 Stage 58: 10m AOD

STAGE 57 - 2077/78  
 Stage 57: 10m AOD  
 Stage 58: 10m AOD  
 Stage 59: 10m AOD

STAGE 58 - 2078/79  
 Stage 58: 10m AOD  
 Stage 59: 10m AOD  
 Stage 60: 10m AOD

STAGE 59 - 2079/80  
 Stage 59: 10m AOD  
 Stage 60: 10m AOD  
 Stage 61: 10m AOD

STAGE 60 - 2080/81  
 Stage 60: 10m AOD  
 Stage 61: 10m AOD  
 Stage 62: 10m AOD





<b>Existing View</b> 		<b>CAUTION</b> This drawing is for information only and should not be used for any other purpose without the written consent of the author. It is not to be used for any other purpose without the written consent of the author.		<b>VIEWPOINT</b> Viewpoint 5 - The Winkling Viewpoint 5 - The Winkling Viewpoint 5 - The Winkling	
Camera Location (OS Grid Reference) Camera Level (m) Direction of View (bearing, true North) (°) Distance to View Elevation to View	S42E16 N 108118 N 15m 247° 27m 27m	Horizontal Field of View Paper Size File Name File Location File Name File Name	32x7 (Screen resolution) A3 (Print size) 1000 x 750 (mm) 1000 x 750 (mm) 1000 x 750 (mm)	Photo Date / Time Camera Model and Lens Lens Make, Model and Focal Length Height of Camera Lens above Ground (m)	08/04/2015 14:15 Canon EOS 60D, 18-55mm Canon EF 18-55mm f/3.5-5.6 IS II 15m





# LVIA Key Viewpoints (H17 Radar)

## Representative Viewpoint 6: A1103 (Newmarket Road) (Left and Right)



Representative Viewpoint 6 (Right) - A1103 (Newmarket Road)

# LVIA Key Viewpoints (H17 Radar)

## Viewpoint 7: Coldham's Common





# LVIA Key Viewpoints (H17 Radar)

## Viewpoint 8 (Coldham's Lane, Cherry Hinton)



## LVIA Key Viewpoints (H17 Radar)

Representative (Long Distance) Viewpoint 9 (Airport Way, near Teversham) (Left and right)



Approximate location of  
proposed radar mast



Representative Viewpoint 9 (Right) - Airport Way nr. Teversham



# LVIA Key Viewpoints (H17 Radar)

## Viewpoint 10 (Long Distance) (Cambridge Strategic VP10)



# LVIA Key Viewpoints (H17 Radar)

## Representative (Long Distance) Viewpoint 12 (Midsummer Common)

LDA DESIGN

Approximate location of  
proposed radar mast



Representative Viewpoint 12 (Right) • Midsummer Common