

Proposed drainage plan



1:500 @ A3

## 7.4 Water Provision

### Existing Water Supply

Access to water in the Market Square is from an existing water tap with a dog bowl next to it. The tap is located on a standalone housing which is in poor condition, the water source is not controlled so can be accessed by anyone and could be left running. The existing fountain has an underground chamber that is connected to Hobsons conduit which historically supplied the fountain with water.

The fish monger has an existing water supply and drain used for their waste (refer to drainage section of this report for drain proposals).

The underground toilets have an existing water supply.



**Fountain water supply existing features**



**Existing water tap**

### Proposed Water Availability

New water sources are proposed for access to the general public, market stall traders and for events. These would consist of:

#### Operational Fountain Taps

Adapting the existing historical fountain, reconnecting it to the water mains and restoring/adding four working taps for the use of market stall owners and the public. This would require listed building consent as the fountain is listed.

#### Water tap water supply

A new water tap providing a water supply to market stall owners and the general public. The dual function offers the possibility to fill a bottle but also to drink water directly from the tap. The tap is vandal-resistant and can be used 365 days a year.

#### Fishmongers Tap and Drain

Provide a tap adjacent to permanent fishmongers stall for predominantly their use only.

#### Events and Maintenance water supply

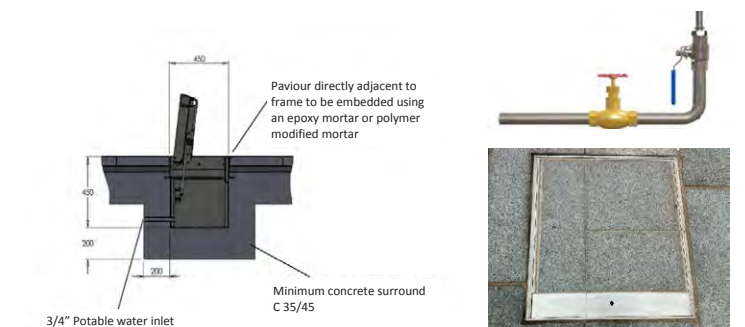
Provide an in-ground water supply that can be accessed for events such as events toilets and for general upkeep and maintenance purposes of the square in general such as wash downs after trading hours.

#### Underground toilets

Existing water supply to the toilets will be retained and modified as required.



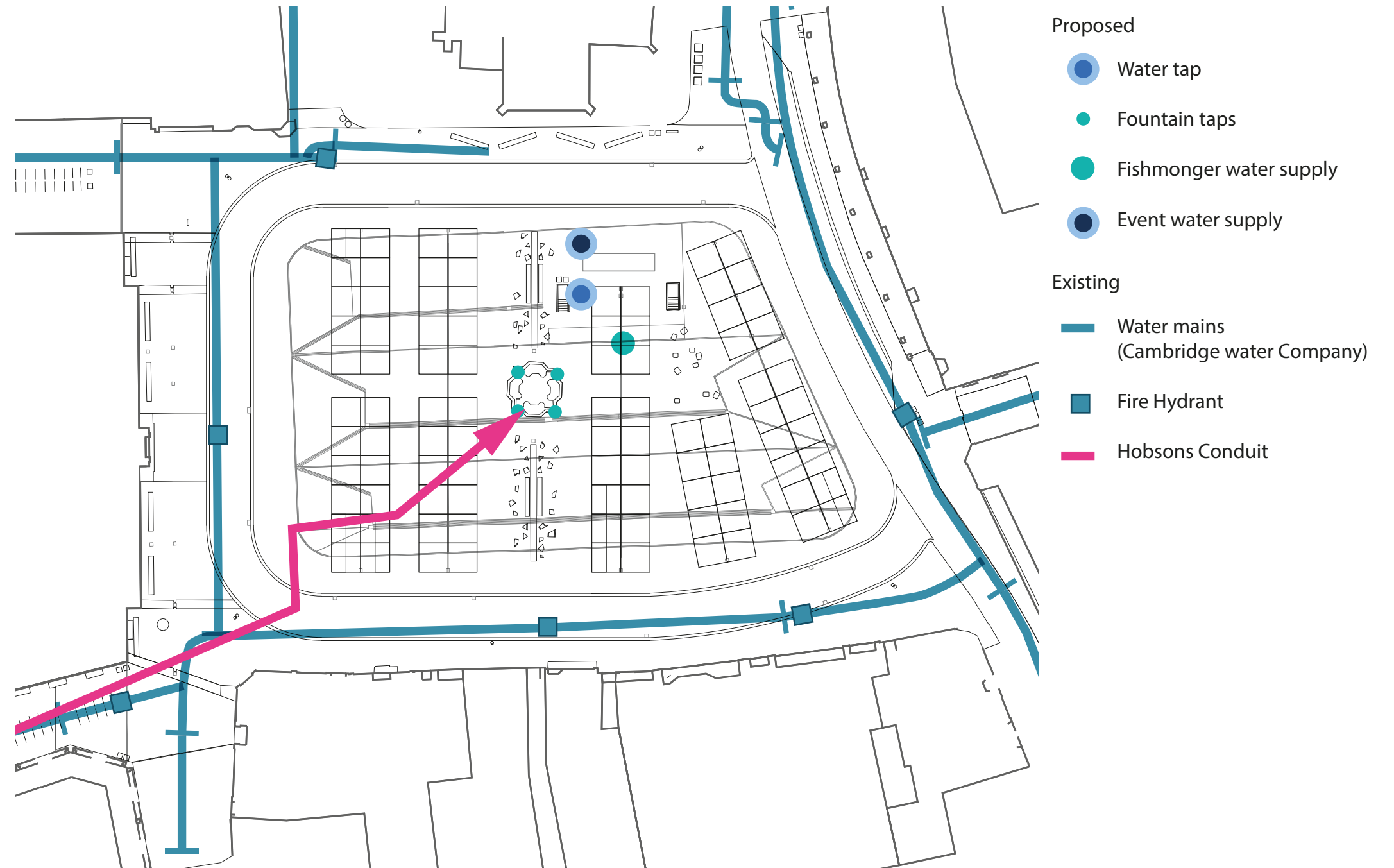
**Proposed new water tap (join the pipe)**



**In ground water supply for events**

### Next Steps

- \* Explore the technical feasibility with an M&E engineer regarding making the fountain taps operational again.
- \* Consult with Historic England regarding listed building consent for any works to the fountain.
- \* Involve an M&E engineer to understand the existing water supply within the square



Proposed water provision



1:500 @ A3



## 7.5 Market Waste Removal

### Existing Waste Removal System

(See street furniture chapter for public waste removal proposals)

For market waste, there are currently five general waste 1100L waste bins. These are collected daily or every other day. These bins alone currently provide an inadequate amount of waste disposal for the waste generated by the market stall traders. The recycling waste is collected twice a week.

### Proposed Waste Removal System

The proposal for the management strategy of the waste created by the market stall traders is to use an innovative underground storage and removal system. An example of a similar scheme is found at the Eddington site of West Cambridge.

The system houses a number of underground bins with access to them via an above ground chute. The proposal is for no. 2 of 5m<sup>3</sup> capacity bins for general waste and a further no. 2 of 3m<sup>3</sup> - one for recycling and one for food waste. As part of the system the market traders will each be given a smart card which allows them to 'tap-in tap-out' of the waste bins whenever they deposit waste and will be charged proportionally to how much waste they drop.

It is proposed to locate this waste system within the existing underground toilet and storage facility in

the corner of the site near St Mary's church. There are two principal reasons behind this decision; one is to minimise costs by utilising the existing structure as much as possible. The second is to avoid excavating new areas of Market Square and potentially unearthing land with archaeological significance.

The sealed subterranean units have a number of benefits over above ground waste storage.

- \* There is a significantly higher capacity than regular bins.
- \* It is expected that the increased waste capacity combined with the smart collection technology will reduce the number of times a waste truck will be required to enter market square, increasing efficiency and reducing emissions.
- \* They have been shown to minimise the bad odours associated with traditional bin systems.
- \* Limited chance for vandalism
- \* They are more aesthetically pleasing than the cluttered on-street bins currently in operation and can therefore play a real role in improving the space facing St Mary's church which is currently littered with various bins and waste elements.
- \* Smart access card provides a good level of security and minimises risks to general public.



Existing waste bins



Cardboard waste compressor



Current on-street 1100L waste bins



Existing cardboard waste container





**Proposed Waste Removal Locations**

The proposal is to have no. 2 of the 5m<sup>3</sup> capacity bins for general waste and a further no. 2 3m<sup>3</sup> - one for recycling and one for food waste.

Finish proposed to be matt black to integrate with other existing and proposed street furniture while the square plate will be integrated with the same paving treatment as the surfaces around it.



**Example of underground waste system at Eddington, West Cambridge**

Despite offering a significant amount of waste capacity, compared to on-street bins, the below-ground waste bins are relatively unobtrusive at street level, with just a number of bin chutes visible.



**Next Steps:**

- \* Receive and evaluate data on the volume of market waste being produced by the market traders and assess how this compares with the current proposed provisions.
- \* Review existing manufactures and systems available for smart subterranean waste management systems and understand how this could integrate with existing systems already being operated by Cambridge City Council.
- \* Ensure structural compatibility with the current proposal to house the waste units within the existing underground toilet and storage facilities.
- \* Review opportunities to integrate system with existing smart waste management strategies and vehicle fleet in Cambridgeshire.



**Technical Details**

Typically the bin dimensions are around 1800 x 1800mm and either 2000mm deep for the 3m<sup>3</sup> version or 3200 mm deep for the 5m<sup>3</sup> version.

The installation requires a concrete ‘bunker’ to be sunk into the ground which can be placed individually or in a configuration with a number of other bunkers.

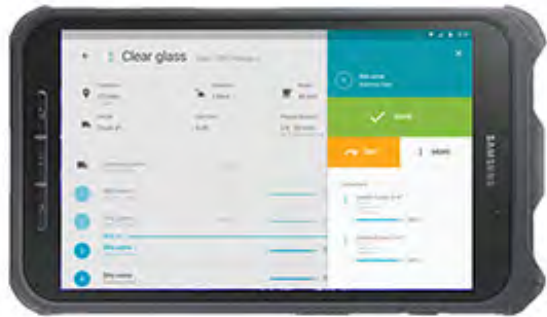


When the bin is nearing full an alert will be sent to council’s waste to collect the contents. The bin is then hoisted out of the ground and emptied using a crane on the back of a regular size waste collection truck.

The pedestrian platform at ground level is made of a laminated steel plate set within a fixed frame, which allows the cover to be customised and integrated with the paved surface around it.

**Smart Collection System**

Part of the proposal is to integrate the collection of bins on Market Square with an existing fleet of refuse collection trucks in Cambridgeshire. The bins use sensors to recognise when they are nearing full and notify the council to collect the waste, rather than collecting every day irrespective of how full the bins are, as is currently the case. This is to improve overall efficiency and reduce traffic of waste trucks around Market Square.



### Pay-As-You-Throw (PAYT)

Using an intelligent waste system it is possible to identify who is using the waste system, when and how many times. Market traders will each be issued with a key card that allows them access to the bins.

This system allows a fairer taxation system based on a 'pay-as-you-throw' principle so that each market trader is only charged for the waste they produce.

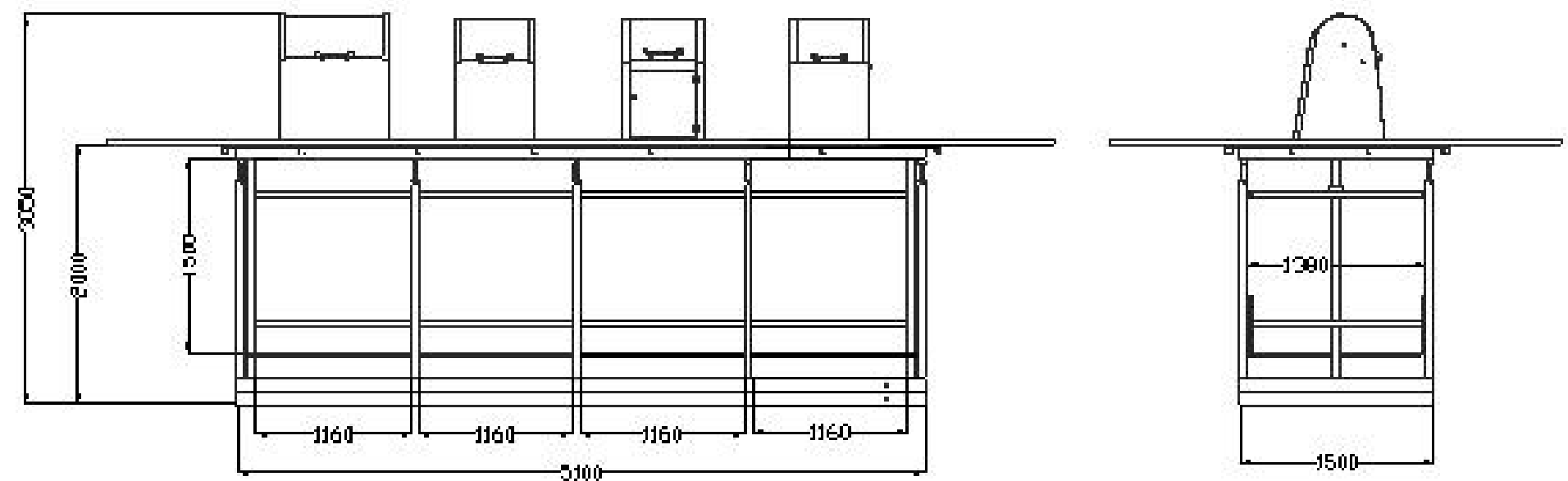
A secondary advantage of this system is safety. It means the general public will not have access to the bins and there is limited risk of somebody misusing the bins and entering the chute.



An example of a below ground waste management system with PAYT chip readers and rear access hatches for bulkier waste



An example of a PAYT bin



Typical dimension of a below-ground waste system



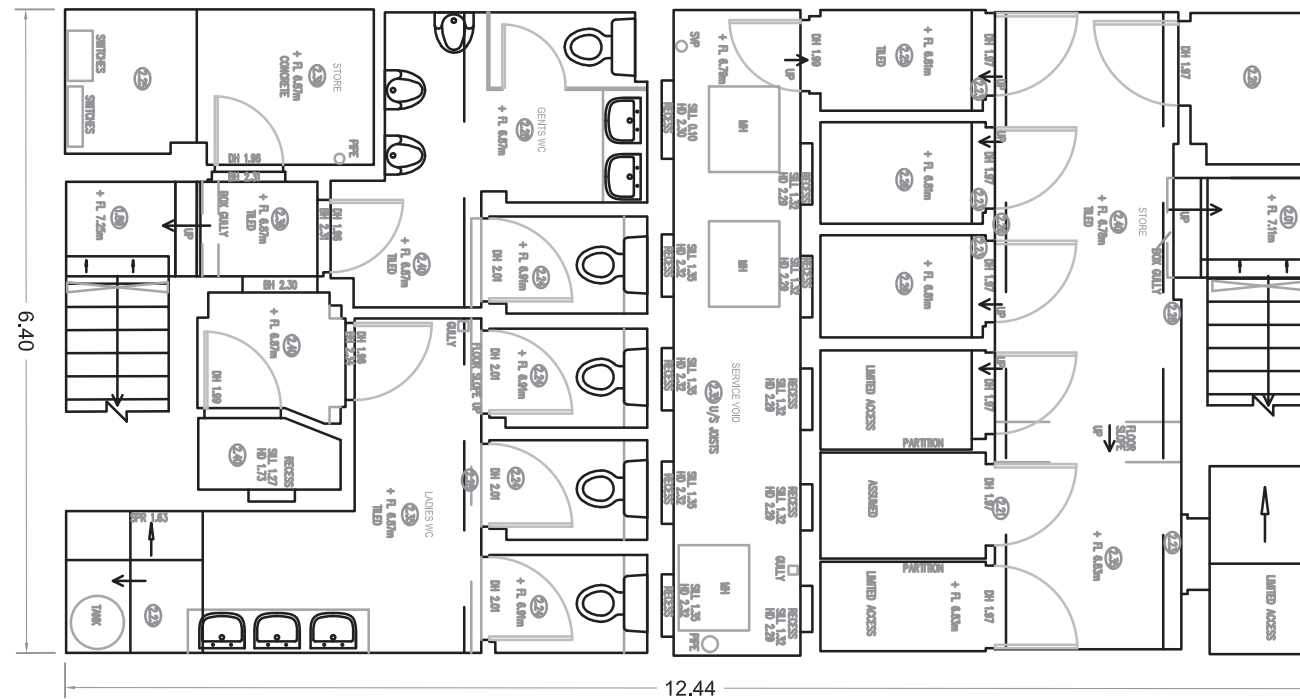
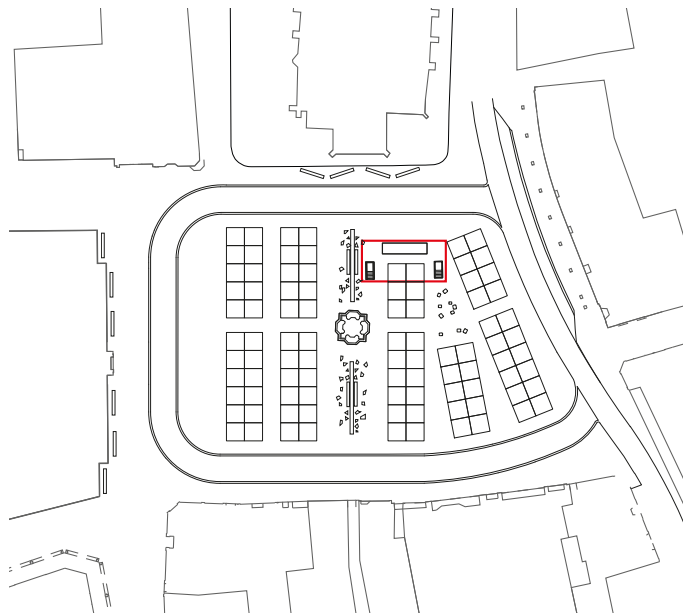
## 7.6 Toilets & Storage

There are existing toilets provided to the market traders through facilities which sit below ground close to Great St Mary's Church. Access is via secured stairs on the Market Square. Alongside the toilets, the underground amenities have provisions for a number of the market traders to use storage cupboards. The facilities are on the whole in a poor condition and need updating.

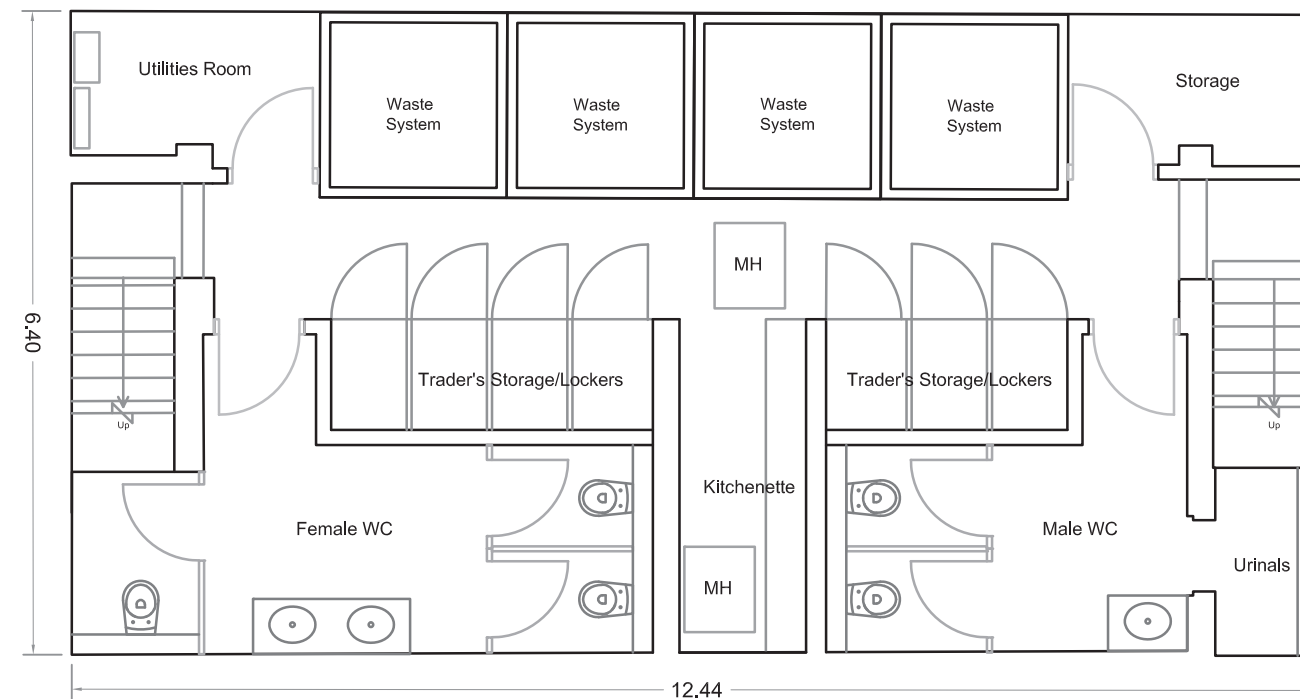
The proposal is to use the existing underground facility's structure but redesign the internal layout. This includes creating a corridor that connect both staircases, facilities for a small kitchenette and maintains storage facilities. The design accommodates the excavated space required for the no. 4 waste 'bunkers' which also sit below ground.

### Next Steps:

- undertake a full structural survey to understand the extents of the services that can be retained or need to be replaced.
- understand the structural requirements of the waste system 'bunkers' and how they are integrated into the existing structure.



1:75 Existing Plans



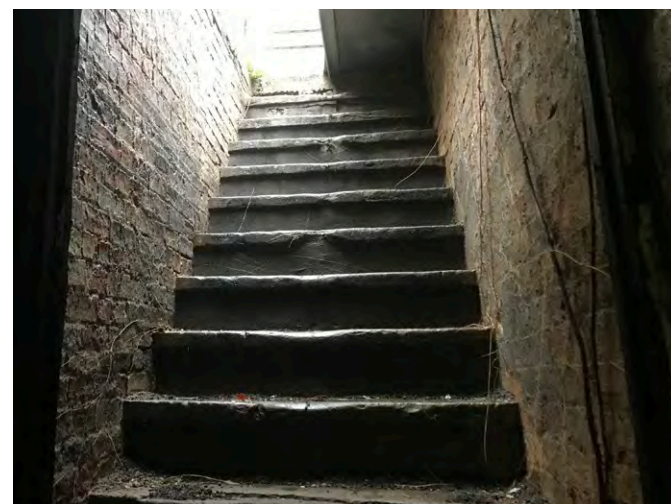
1:75 Proposed Plans



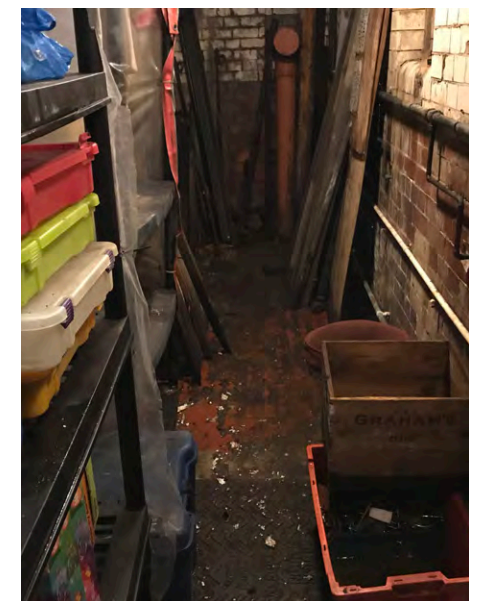


As part of the proposal to reconfigure the underground amenities, it is proposed to introduce a new storage facility to be used by the market traders. Beneath the St. Edwards King & Martyr C of E Church there is a historic vaulted storage facility which could be re-purposed and used as a place for the traders to store items they require on market days but would be inconvenient to transport to -and-from site everyday, such as tables, signs and boards.

The vaults are accessed from a staircase at the North-East corner of St Edwards, leading down to them directly off Peas Hill. While the stairs would benefit from renovation and some improvement the access condition could be described as better than that for the existing storage units.



Underground vaults proposed to be used for storage by market traders



The current storage facilities for the market traders

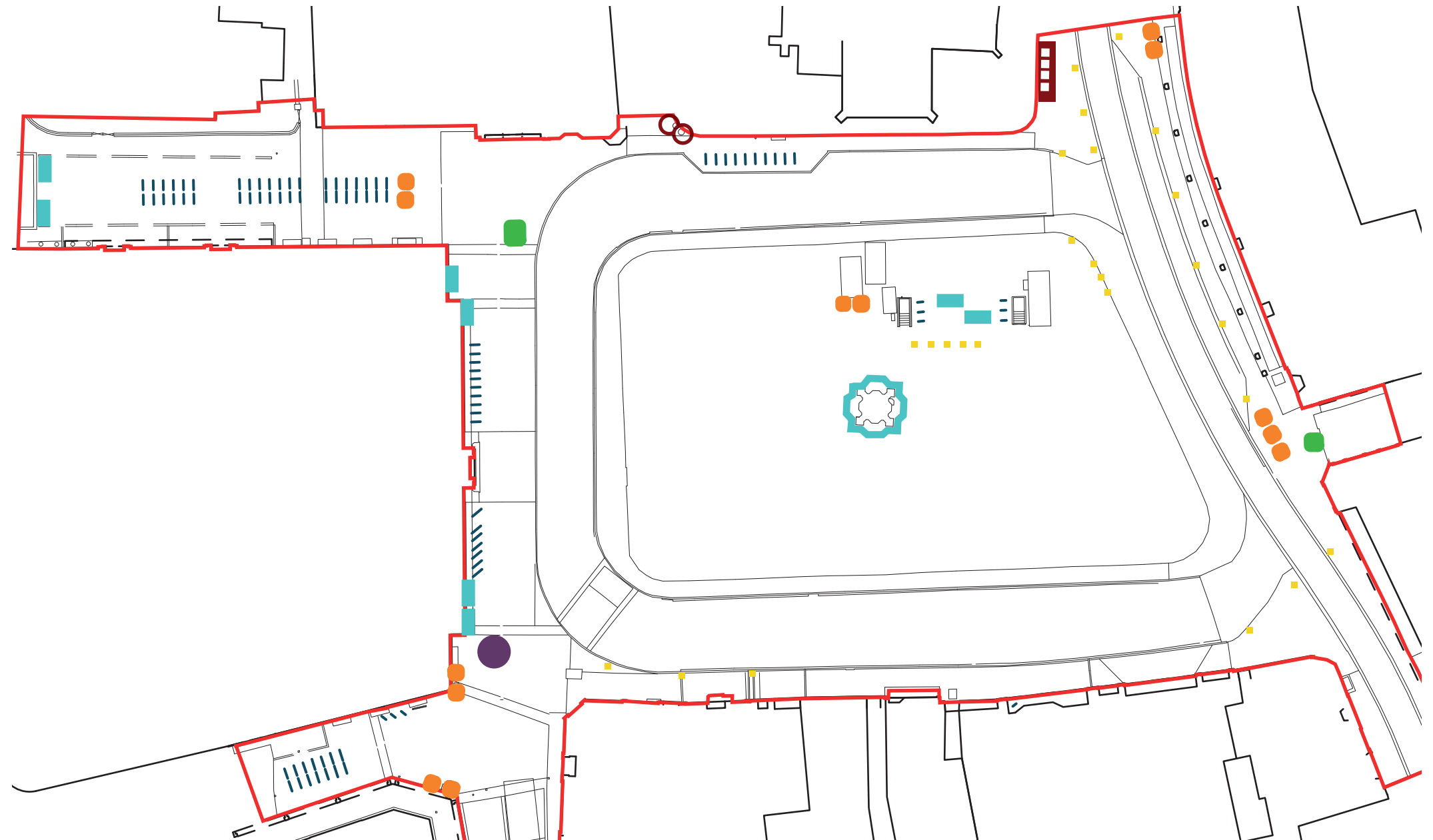
## 8.0 Street Furniture

### 8.1 Existing street furniture

The existing street furniture within the Market Square is uncoordinated and lacking a considered and consistent approach. The majority of the street furniture is located around the square on the edges, with very little in the central market area. The limited furniture that is present in the market area appears to have been an after thought or the result of inadequate provision such as the picnic tables and that fact that people use the fountain to sit on as there isn't enough seating. There are some features of interest such as the post boxes, telephone kiosks and memorial artwork.

The market appearance and layout currently does not lend itself as a space to stay, sit and spend time other than to buy items and then leave. The amount and location of street furniture contributes towards this. A considered street furniture palette is required which is designed appropriately to the character of the square, coordinates locations with uses of the space, views and sunny aspects and provides adequate provision. This would improve the appearance of the space, enable people to enjoy the space rather than just passing through it and reduce clutter.

- Waste bins (general and mixed recycling bins)
- Memorial artwork
- Post Boxes
- Telephone Kiosks
- Seating
- Signage
- || Cycle stands
- Bollards



Plan of existing street furniture



0 10 20 m

1:500 @ A3



### Waste bins

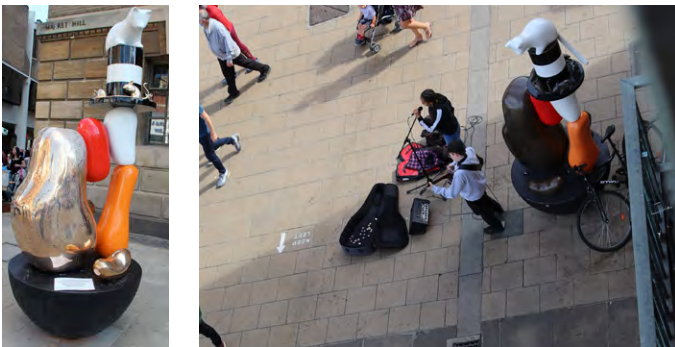
Currently waste provision for the general public in the Market Square consists of general waste and mixed recycling bins in pairs or groups. The type and size of bins vary. A consistent and coordinated approach is needed.



Waste bins that house wheelie bins in the market

### Memorial Artwork

A memorial artwork is located outside the Guildhall, in memory of Walter 'Snowy' Farr MBE (1919 to 2007). He was a well-known presence in Cambridge Market Square, where he would collect money for charity. It is proposed to retain the artwork in its current location.



Snowy Farr memorial

Image Geophones

### Post boxes

A pair of post boxes are located by St Marys Passage. Usually for a pair they are from different reigns G VI R and E II R vintages. It is proposed to retain the postboxes in their current location.



Pair of postboxes Image Richard Humphries

### Telephone Kiosks

Four K6 Telephone Kiosks are located on St Mary Street adjacent to Church of St Mary. They are Grade II listed. The kiosks were moved to their current location in the mid 1990s from above the and were formerly listed as Three Telephone Kiosks, Market Hill. It is proposed to retain the kiosks in their current location.



Telephone kiosks now and previous location of 3no. in the Market Square

### Seating

Currently there is very limited seating within the square, a few benches positioned against the Guildhall facade within a shaded location and a couple of picnic benches by the market toilets. People often use the fountain as an informal seat. There is a clear need for additional seating especially in locations associated with the market to allow people to buy food and drink and enjoy it within the Market Square.



Picnic benches and benches outside the Guildhall

### Signage and Wayfinding

Currently there is one wayfinding totem sign with a map by Peas Hill and one wayfinding post located by Rose Crescent. These will both be retained. There is no signage associated with the Market. All street names if named are located on the buildings. Additional signage and wayfinding could help visitors to the market and provide



Signage totem and street signage

### Cycle Stands

The current design of cycle stands used are not suitable for all types of bikes. A simpler cycle stand design would be more inclusive. The location of cycle stands is covered in the Access section of this report.



Cycle stands

### Bollards

There are several bollards within the Market Square, these will be removed if not required (subject to highways works).



Bollards

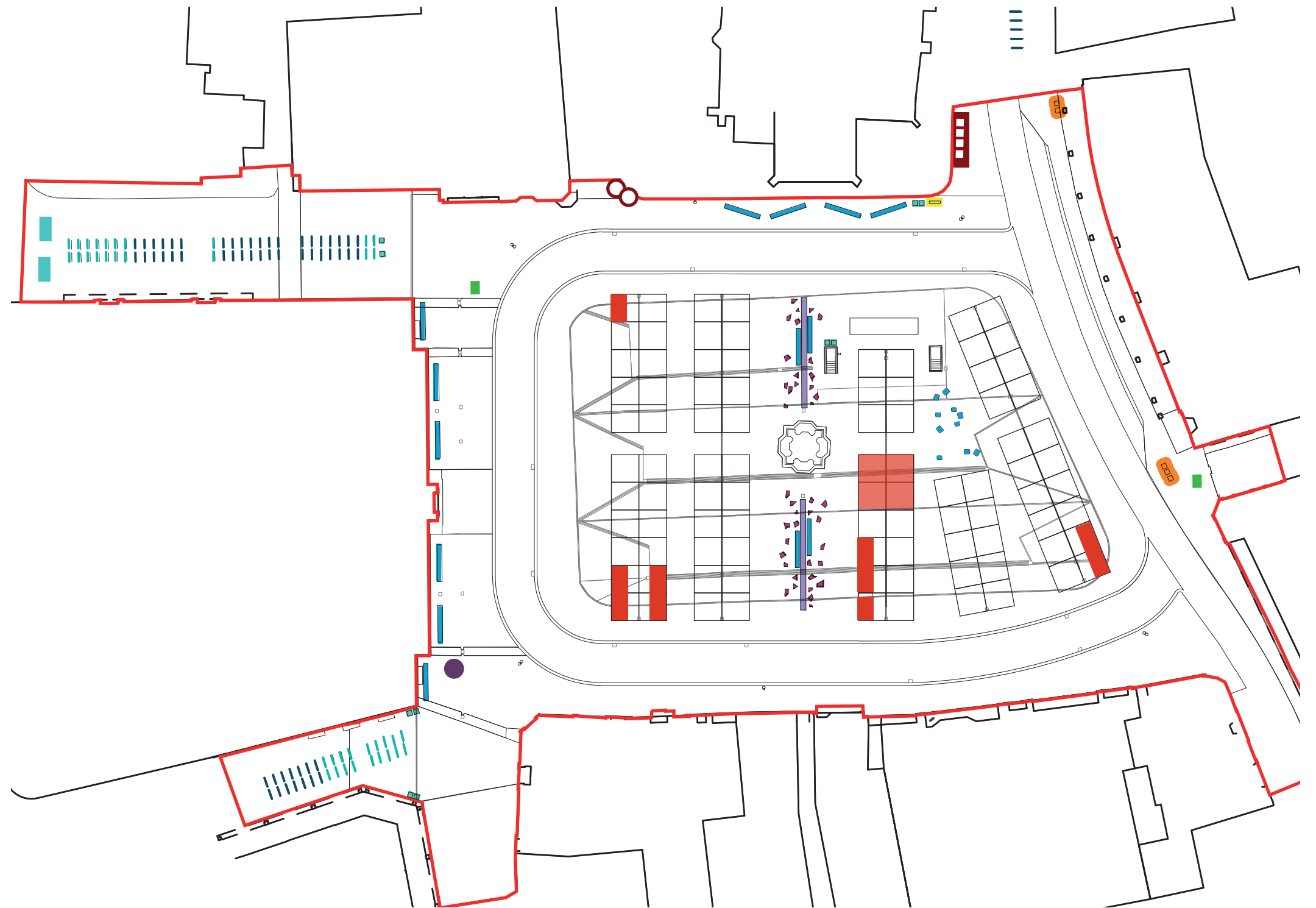


## 8.2 Proposed strategy

The street furniture proposals aim to create a coordinated and cohesive design that is considered and appropriate to the character of the square. Making the most of the space available by reducing clutter of unnecessary items and and introducing more of what's lacking such as seating.

The opportunity to incorporate smart street furniture has been considered. This could provide a range of benefits for the council and users of the space by using smart technology and building in IoT infrastructure to create sustainable solutions.

- \* Street furniture that allows for the creation of dynamic and flexible spaces
- \* Supporting the move to zero carbon and providing educational elements in terms of renewable energy and environmental data
- \* Improved WiFi connectivity
- \* Communication of market information, local information and services on screens that can be updated easily
- \* Saving energy by more efficient waste collections
- \* Collecting big data to improve public services (e.g. pedestrian traffic, use of public facilities, comparison of different locations)



Plan showing proposed street furniture



0 10 20 m

1:500 @ A3



## 8.3 Seating

### Existing Retained

- Memorial artwork
- Post Boxes
- Telephone Kiosks
- | Cycle Stands
- Sign
- Litter bins
- Seating

### Proposed

- Litter Bins and mixed recycling bins
- Long Benches
- Communal Table
- Fragment Seating
- Market objects
- Fish Monger counter
- | Relocated cycle stands
- Digital sign

### Proposed Seating

The seating proposals provide additional seating opportunities within the square with a range of seating types. The locations have been considered in relation to uses, views and sunny aspects. The seating types include fragmented seating, long tables, long benches and seating blocks. They will cater for different uses such as for people that want a quick rest, somewhere to sit, relax and watch the world go by or to meet as a group and eat at a table. Seating that is adaptable and flexible will allow the space to respond to events and future needs, this may involve some seating types that are moveable by a forklift or similar. Some seating types could provide places to charge electronic devices for free so people can browse the internet using the free WiFi, charge their phone or check the environmental data for the area.

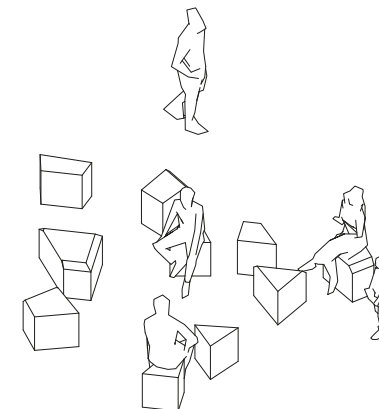
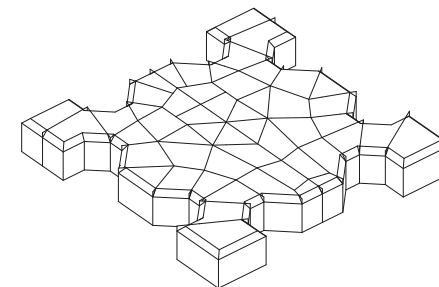
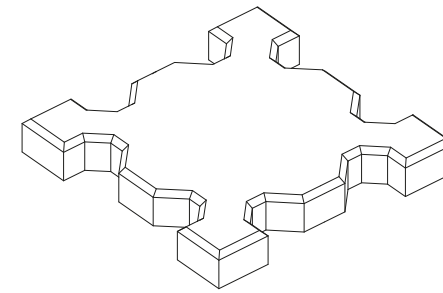
### Fragmented Seating

Informal seating within the square is located within the central axis associated with the long tables.

The seating is derived from the fountain geometry, taking the form of the fountain base and fragmenting it into small seating fragments that are then scattered about to form seats. The fragments could be static or potentially moveable (by forklift or similar) to allow greater flexibility in some areas.

#### Design/Product criteria

- \* Bespoke product
- \* Granite to match the existing fountain
- \* Geometric fragments
- \* Approx 450mm height, with a range of approx 10 different sizes and shapes 450x450mm up to 750x750mm
- \* Approx. 50no.
- \* Fixing TBC (Sat on top of granite setts to retain flexibility)



Fragmented seating concept



Example of bespoke granite seats (Marshalls bespoke prospero granite seating)



Geometric form similar to Old Bailey street, London



Granite used to match the existing granite fountain

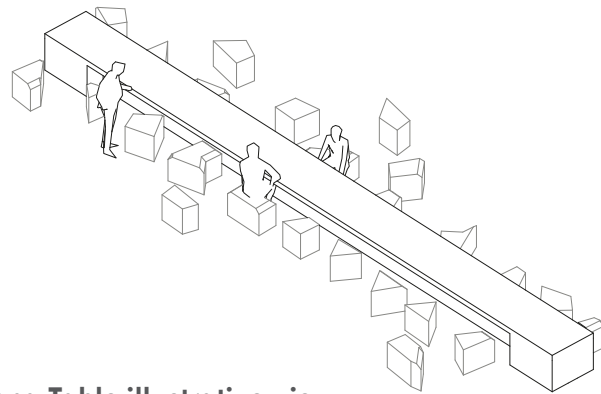


### Long Table

Two long timber communal tables are proposed aligned to the centre of the central axis. The tables will provide space for people to eat and drink within the market and to sit and socialise around a table or bring political discussions outside from the Guildhall. Fragmented seating and long benches will provide seating around the table with spaces for buggies and wheelchairs.

#### Design/Product criteria

- \* Bespoke product similar to Eddington
- \* Metal/timber material
- \* Linear form
- \* Approx dimensions 12metres length x 0.9m width x 0.72m height
- \* 2no. quantity
- \* Fixing TBC (Fixing points within granite setts)



Long Table illustrative view



Eddington example

### Long Benches

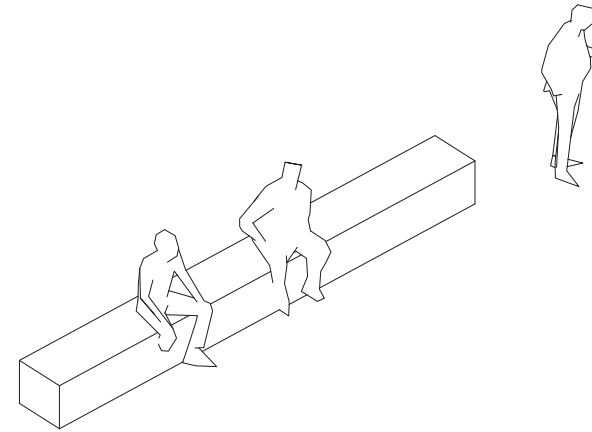
Elegant linear seating elements incorporating backrests and arms are proposed located in front of the church, alongside the long tables and in front of the Guildhall. These will replace the existing benches outside the Guildhall and provide additional seating.

#### Design/Product criteria

- \* Supplier Chris Nangle
- \* Carved oak benches
- \* Simple metal back rests incorporated along a proportion of the bench length
- \* Invisible metal feet so that benches appear to be floating
- \* Sculpted carved form to deter rough sleeping and skateboarding
- \* Approx. dimensions 4.8metres long by 0.5m width and 0.45m height.
- \* 14no. long benches
- \* In ground fixings. Fixing points within granite setts TBC



Double bench and Green oak Wave bench



Long Benches illustrative view



The Coal Drops Yard, London Kings Cross  
Carved charred oak bench

### Seating blocks

Elegant blocks as informal seating elements within the northern market space. Associated with long benches.

#### Design/Product criteria

- \* Supplier Chris Nangle <https://www.chrisnanglefurniture.co.uk/about-us/>
- \* Carved Oak Seating Blocks
- \* Carved from a single solid piece
- \* Charred finish makes a bold impact and is colourfast and maintenance free
- \* Approx. dimensions 0.5m width and 0.45m height.
- \* Approx. 10no



Carved charred oak seating blocks



## 8.4 Objects

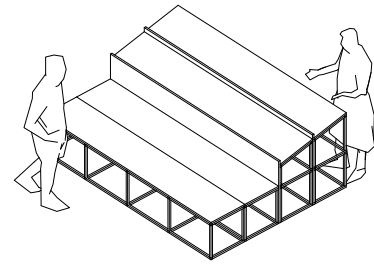
Currently some market traders leave display equipment or infrastructure in the market overnight.

The proposals look to reduce the amount of clutter and deter traders from leaving equipment out. The small amount required to stay overnight will be designed into the scheme so that they appear as beautiful objects or transform into usable seating in the evening.

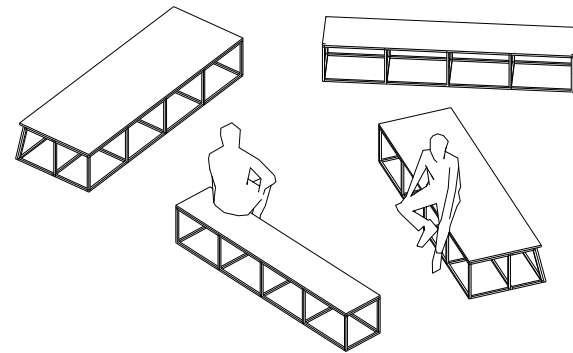
### Display/seating

A black metal framed structure with timber boards that can transform from a display stand in the day to seating in the evening.

- \* Small units 0.45m x 0.45m
- \* Tall units 0.45m x 0.9m



### Objects as display stands

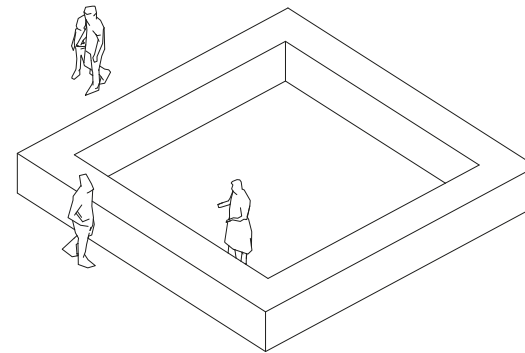


### Objects as seating

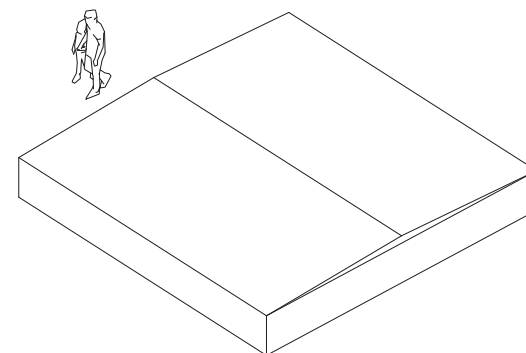
### Fish Mongers counter

An open counter in the day that transforms into a closed box at night.

- \* 6m x 6m footprint (equivalent to 4 no. 3x3m stalls)



### Counter open



### Counter closed

## 8.5 Waste Bins

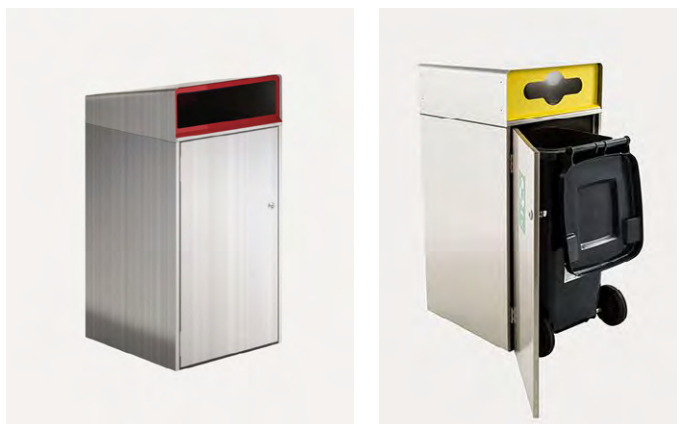
The waste bin proposals would replace the existing bins in the central area, Peas Hill and Petty Curry and coordinate the locations with the street furniture provision. The bins in the central market area would be relocated west of the railings with an additional pair of bins proposed next to the proposed long seating benches in front of the church.

The proposals are for Smart Wheelie bins housing bins. Replacing the existing bins with new bins which house wheelie bins and include a smart sensors.

Smart bins are connected to WiFi and equipped with fill-level sensors that track the situation in real time and send data alerts to the collection team that the bin is 85 per cent full to ensure that they are not allowed to overflow, but also are not emptied unnecessarily.



Escola Smart sensor bins



Escola bin housing

## 8.6 Cycle stands

The proposals relocate several cycle stands outside of the main market area. Refer to access section for cycle stand strategy. New or relocated cycle stands would be Sheffield stands powder coated black that allow both front and back wheels to be locked securely.



Sheffield stands coated black

## 8.7 Wayfinding and Digital signs

Currently there is one signage totem with a map and one wayfinding sign within the square. These will both be retained.

An additional digital signage totem providing Market Square news feed is proposed that connects the Market Square users with a screen everyone can see and anyone can use. Empowering market traders and community members to share relevant local content, businesses of all sizes to engage with customers, artists to showcase their work, and Cambridge to better communicate with its residents and visitors. The proposed location is next to the long benches outside the church near the telephone kiosks.

The digital signage totem could run on solar power, which means no wires and no emissions. It could include environmental sensors and data to check pollen and noise levels. If linked to IoT sensors the sign could provide an constantly up to date map of market stall traders locations.



Double Sided outdoor screens installed at the Wales Millennium Centre, Cardiff, Wales

Image Digital Media Systems

## 8.8 Lighting

### Existing lighting

The square is currently illuminated by a series of 10m double headed columns. These columns provide decent lighting for the vehicular activity for the square and suitable light for the current activities and standard. The visual appearance is dated and specification is a luminaire which would be suited to a highway, equally the lamp type is outdated and should be, if not soon, be upgraded to LED from Metal Halide. There is also concern that these lights may be create obtrusive light for the residential buildings surrounding the square and the side roads which should be addressed by any future schemes.

The current locations give a good indication that the column locations could be moved to more suitable spaces to match the design and layout of the new square uses and orientation. A survey of services would be useful to determine if there are any areas which are prohibitive for use, but based on this layout we believe much of the square could be used for future locations.

Information on the current agreements and standards from the street lighting team for Cambridge council would be useful to indicate what type of adoptability, future functionality and uses, as well as other infrastructure presumed to be used on these columns - CCTV, signage, 5G, would be beneficial for the next stage of the project. Equally the lights are part of a bigger scheme, especially the corner columns which link to Peas Hill and Guildhall St.

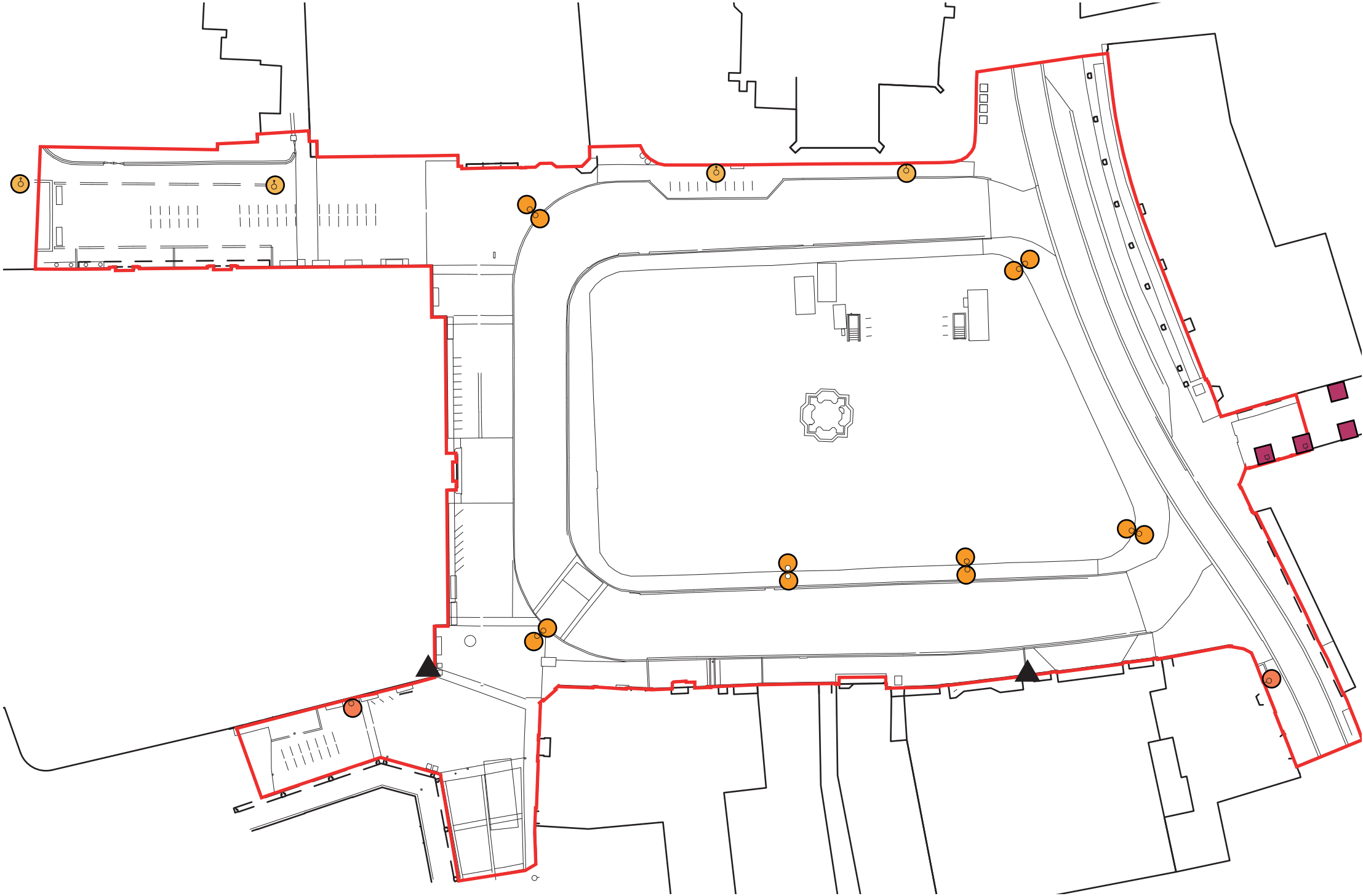
Additional infrastructure on these columns is festive lighting exterior rated 16amp plugs, signage for numerous items around the square and hanging baskets. One column has what appears to be mobile data or 5G.



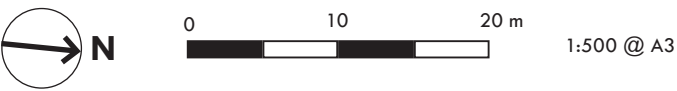


Existing lighting columns

- Double lighting column
- Single lighting column
- Wall mounted
- Historical wall-mounted lighting
- ▲ CCTV



Plan showing existing lighting locations



**Proposed Lighting Concepts**

The new proposals should work in tandem with the option which is chosen, but some overarching themes should be applied to the thought of future lighting design for the Square so the range of proposed activities and potential uses can be understood.

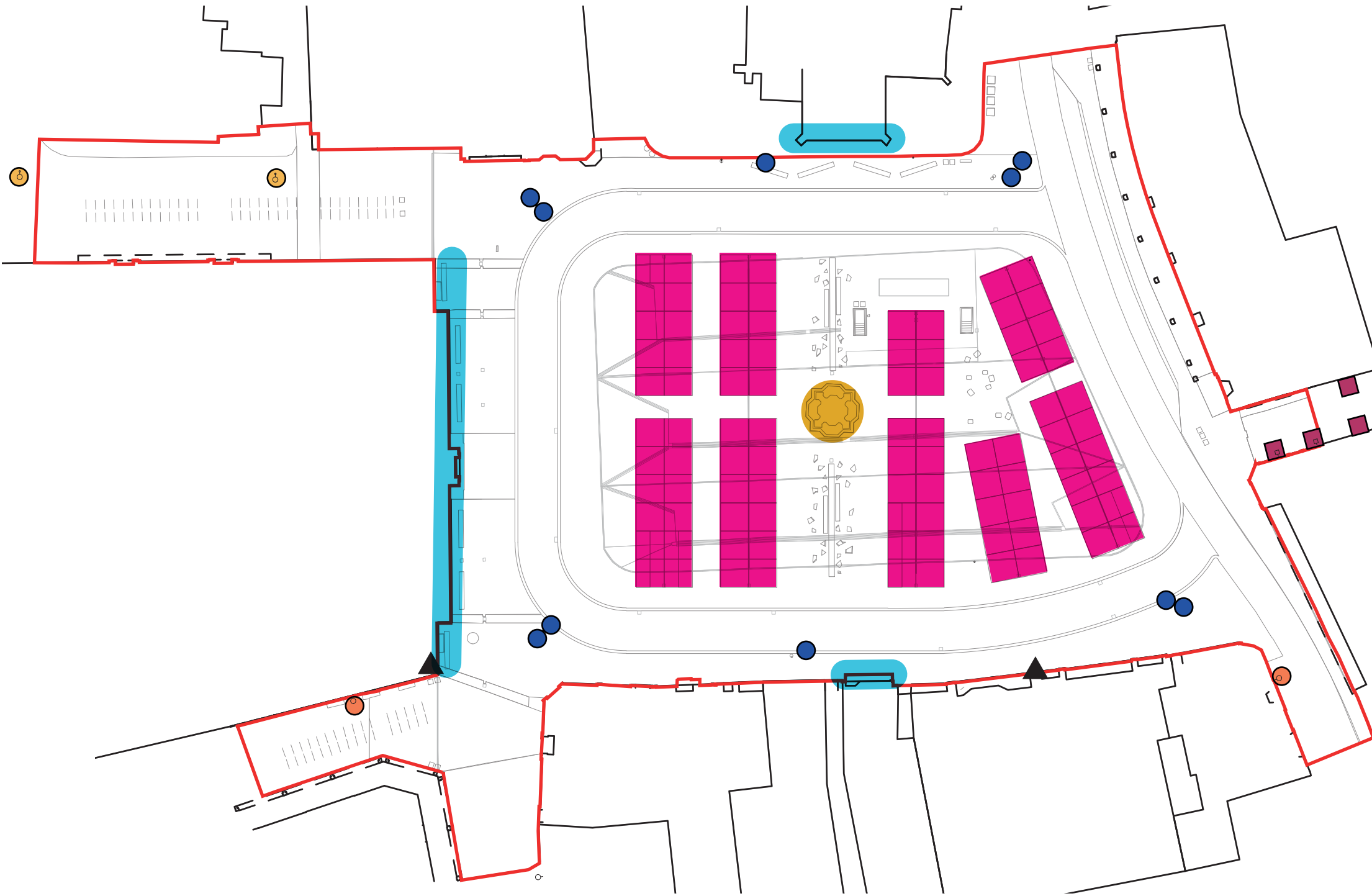
- \* Lighting to provide good lighting for the pedestrian and market use experience first and foremost.
- \* Lighting should work with the current town control system, CMS or other method of lighting control.
- \* Lighting should be controlled in terms of time, allowing for lights to be dimmed at low used times of night, as well as having specific lights for busy, or times of increased risk.

**Existing Lighting**

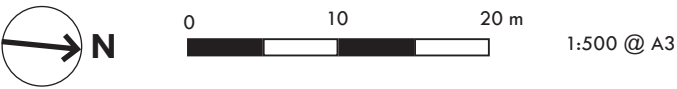
- Double lighting column
- Single lighting column
- Wall mounted
- Historical wall-mounted lighting
- ▲ CCTV

**Proposed Lighting**

- Market Stall Lighting
- Column Lighting
- Facade Lighting
- Fountain Lighting



Lighting proposals plan





Lighting Columns

- \* The lighting columns should be arranged so they do not block the view of Great St Mary's Church, the Guildhall or no. 5 the Grade 1 Listed building. They should sit against buildings or view points which are not as critical.
- \* The Columns should be arranged to fit the layouts for the market stands, a series of tall columns on the South side of the square with additional columns either side and close to the fence of the Church would give a good layout. These could be feature columns and provide a high level viewing item. The columns would suit to be on the average datum of the buildings on the South side, which they will be close to, this is between 12-15m (tbc).
- \* If other components such as signage, CCTV, 5G, Wi-Fi or more are required by any columns, this should be set out prior to any development of column design so that the lighting design can look to integrate and minimise the visual appearance of their impact on the columns.
- \* The column materiality and finish should match the finishes and types that are set out across the rest of the public realm by the Landscape Architects. The design should sit in conjunction to these decisions and not separate.

Architectural Lighting

- \* Architectural lighting should be used on specifically buildings, such as the church, Guildhall and Grade 1 listed building to allow the scheme to have more depth than columns and downward facing light. This will really build the space visuals for visitors and users at night and make a loci destination which feels safer and more inviting at night than many other items.

Events

- \* Lighting for events should be considered and infrastructure should be integrated within the columns to allow for this. This could be for Christmas lighting, Cambridge Light Festival and other events during the year. Engagement of what uses there could, should be considered.
- \* Additionally if required, rigging points could be considered on columns to allow for other events, such as Opera and musical events to have speakers and other components mounted to them, with cables already considered within the design to allow for full flexibility and future use.

Lighting Levels

- \* The classification of pedestrian and vehicular activities should be chosen to allow for the correct specification of lighting levels.
- \* The lighting standards rarely consider public squares, or Piazzas, in great detail and we would advise that the light levels may be lower in the centre of the square. If the vertical surfaces around the square are illuminated and there is sufficient light around the perimeter of the square, there is no perceived risk to the human eye in having very low lux levels in the centre of squares. We have done this in numerous town squares across the UK and is a given across Europe for this scale of space.

Maintainace

- \* Ongoing maintainace and functionality in the long term should be discussed with the Council and incorporated into the lighting design early in design process. We find bringing members along with the journey of the design reaps dividends later in delivering a project which they understand, feel part of, and takes in their considerations for the future.

Market Stalls

The market layouts and design should integrate lighting for each individual market stall. This means that:

- \* No market stall needs to provide their own lighting, this is usually a major visual downfall of marketplaces as people bring bright, awkward, or no lights to their stall. With this everyone has the same decent set of lights.
- \* The views and vistas of the market from afar can be greatly enhanced during day and night with a well designed and aesthetic response to brief.
- \* All cables and plugs can be integrated into the design so it is plug and play, making something which has a long life and can be maintained with easily replaceable items.
- \* Most importantly. The colour temperature can be controlled and be 2,700K very warm white with high colour rendition (CRI). This would mean that the market feels warm in the afternoon, evening and night. People will have light from a human level illuminating them and equally all the products will look great, all the food will look great, and the whole atmosphere of the market will vastly improved to a very high level. (See images opposite of a recent example of this approach).

Most of all, the lighting should make the space attractive, usable and safe everyday, for all people.

Next Steps

- \* A deep research of existing lighting throughout the city centre is to be undertaken in order to create references and a shared aesthetic with the lighting proposed within the square. Matching tones, materials or colours should be considered and brought forward to inspire and influence this more modern approach and design aesthetic within the Square.
- \* Research and testing with the incorporation of Richardson Candles will be a starting point for the evolution of the design within the Square.



Sayer Street - Lighting by Michael Grubb Studio

London  
New Fetter Place  
8-10 New Fetter Lane  
London EC4A 1AZ  
United Kingdom  
+44 (0) 20 7467 1470

Bristol  
Studio 4B  
36 King Street  
Bristol BS1 4DZ  
United Kingdom  
+44 (0) 117 203 3628

Cambridge  
17A Sturton Street  
Cambridge CB1 2SN  
United Kingdom  
+44 (0) 1223 949054

Exeter  
Kings Wharf, The Quay  
Exeter EX2 4AN  
United Kingdom  
+44 (0) 1392 260 430

Glasgow  
Sovereign House  
158 West Regent Street  
Glasgow G2 4RL  
United Kingdom  
+44 (0) 1412 229 780

Manchester  
Beehive Lofts  
Beehive Mill  
Jersey Street  
Manchester M4 6JG  
United Kingdom  
+44 (0) 161 359 5684

Oxford  
Worton Rectory Park  
Oxford OX29 4SX  
United Kingdom  
+44 (0) 1865 887050

Peterborough  
17 Minster Precincts  
Peterborough PE1 1XX  
United Kingdom  
+44 (0) 1733 310 471

[www.lda-design.co.uk](http://www.lda-design.co.uk)

LDA Design Consulting Ltd  
Registered No: 09312403  
17 Minster Precincts, Peterborough PE1 1XX

LDA Design is a ISO 9001 / ISO 14001 accredited company