



## Nightingale Park Bowling Green — Community Garden

March 2016

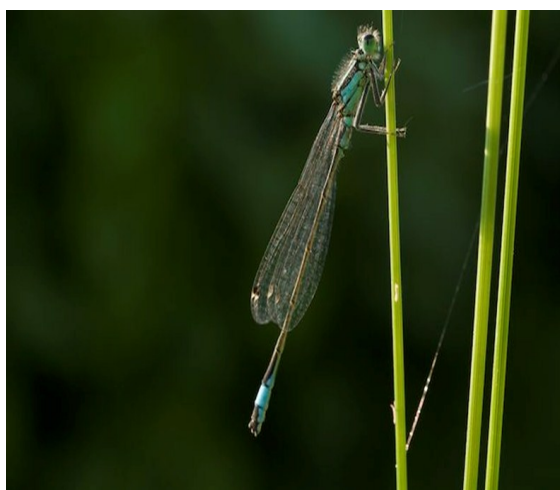
**Cambridge City Council supports the use of the former bowling green as a community garden, allowing local groups to come together to develop this informal space for recreation, social and therapeutic horticulture, sustainable gardening and biodiversity.**

Building on the success of the 2015 Pictorial Meadows (pictured), we have allocated developer contribution funds to ensure the site is more accessible, and landscaped to increase the biodiversity potential. The plan overleaf shows the proposed site layout. The 2016 Council funding can be spent on the access enhancements (including the raised beds), water supply and pond. In 2016, we will also be funding the continuation of the Pictorial Meadows. Other items, such as the proposed fruit trees, will require alternative funding sources that we can work with interested groups to secure.

We'd like to use the minimum amount of hard landscaping, using mown grass for paths as much as possible. We do, however, have changes in gradients that exclude people who are not confident walkers or use wheelchairs. Adding short stretches of tarmac paths to match existing, with a handrail in some cases, will open up the former green and area around the club hut.

The pond will be designed for biodiversity, but also safety for children and dogs. It will have tall marsh planting around it, very shallow shelved edges and rails at the front of the boardwalk. The mound and hibernaculum (buried logs) will support wildlife, including amphibians and reptiles.

The new gate needs to be self-closing (with a spring suitable for wheelchair access) to keep loose dogs out and unsupervised young children in or out. It needs to be double height and securable with a padlock overnight.



The raised beds will be made of hardwood of a height suitable for accessible gardening, and of a width to allow informal perching.

The timber and metal picnic bench will have an open side for wheelchair access.

The water supply is for topping up the pond, watering the garden plants and also for hand washing, especially after pond dipping by children.



## Streets and Open Spaces, Cambridge City Council