

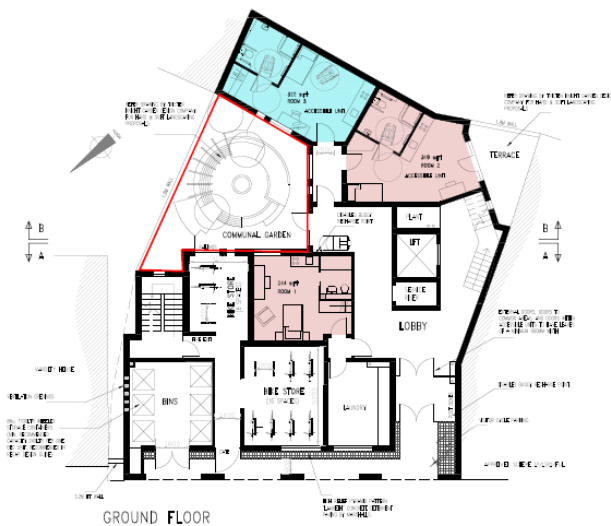
Comparison of usable amenity space in student accommodation developments

Site	Number of rooms	Area of approved usable amenity space (sq.m)	Usable amenity per student (sq.m)
91-93 East Road 14/0764/FUL	33	76	2.3
100 Histon Road 12/1576/FUL	71	329	4.6
1 Milton Road 14/1938/S73	211	168	1.86
7-9 Abby Street 11/1430/FUL	24	194	8.08
73 Humberstone Road 13/0415/FUL	15	67	4.46
Texaco Site 11/0876/FUL	98	45	0.46
Thompsons Lane 14/0133/FUL	72	154	2.1
Primrose Street 15/0140/FUL	30	197.6	6.6

91-93 East Road (14/0764/FUL)

33 Student Studios

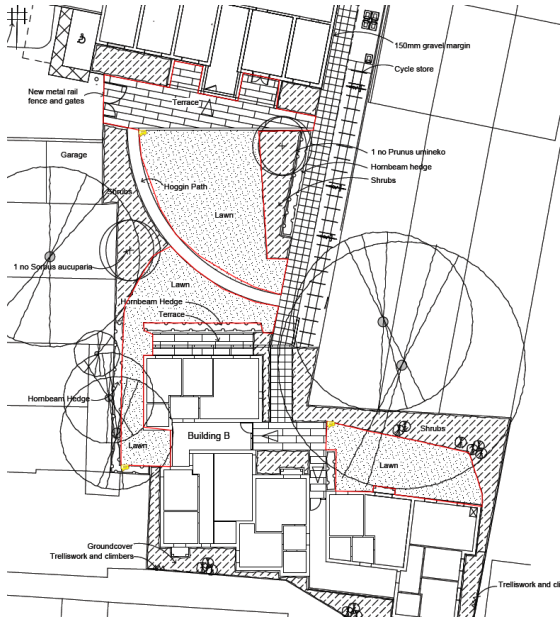
48sq.m + 28sq. m = 76sq.m of usable amenity space



100 Histon Road (12/1576/FUL)

59 en-suit rooms, 4 x 1 bed, 4 x 2 bed units = total 71 bedrooms

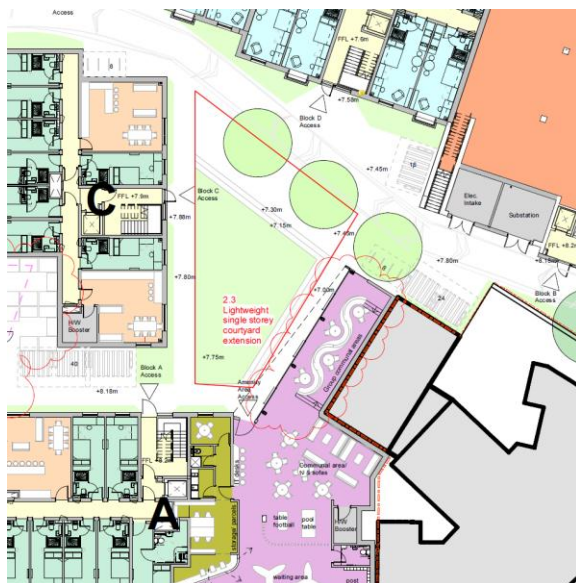
328.6sq.m



1 Milton Road (14/1938/S73)

211 Student units

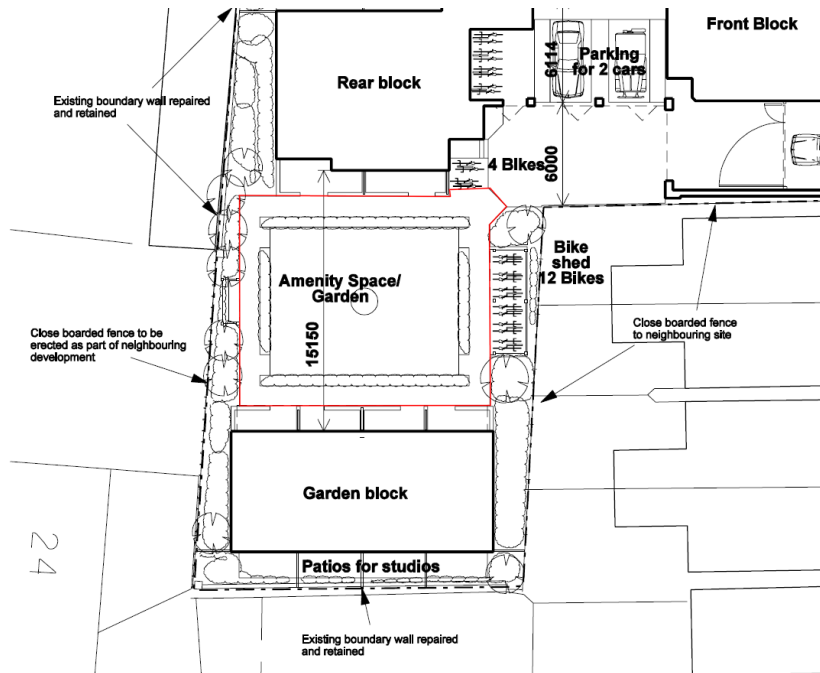
168sq.m usable amenity space



7-9 Abbey Street (11/1430/FUL)

24 Student Studios

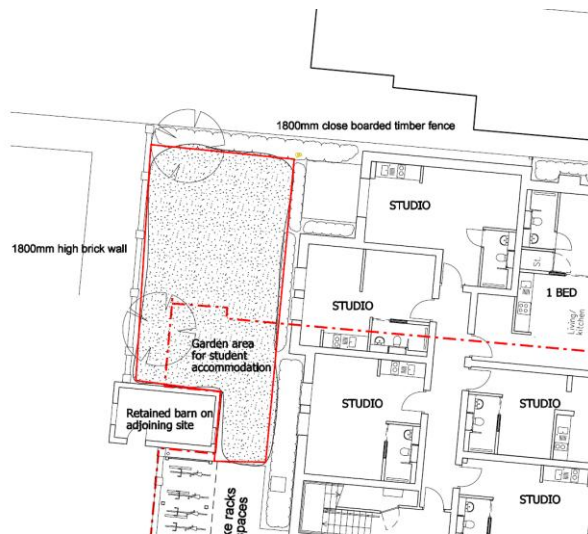
194sq.m of communal usable amenity space



73 Humberstone Road (13/0415/FUL)

13 Studios, 2 x 1 bed flats

67 sq.m usable amenity space



Primrose Street (15/0140/FUL)

30 student studios

197.6 sq.m

