

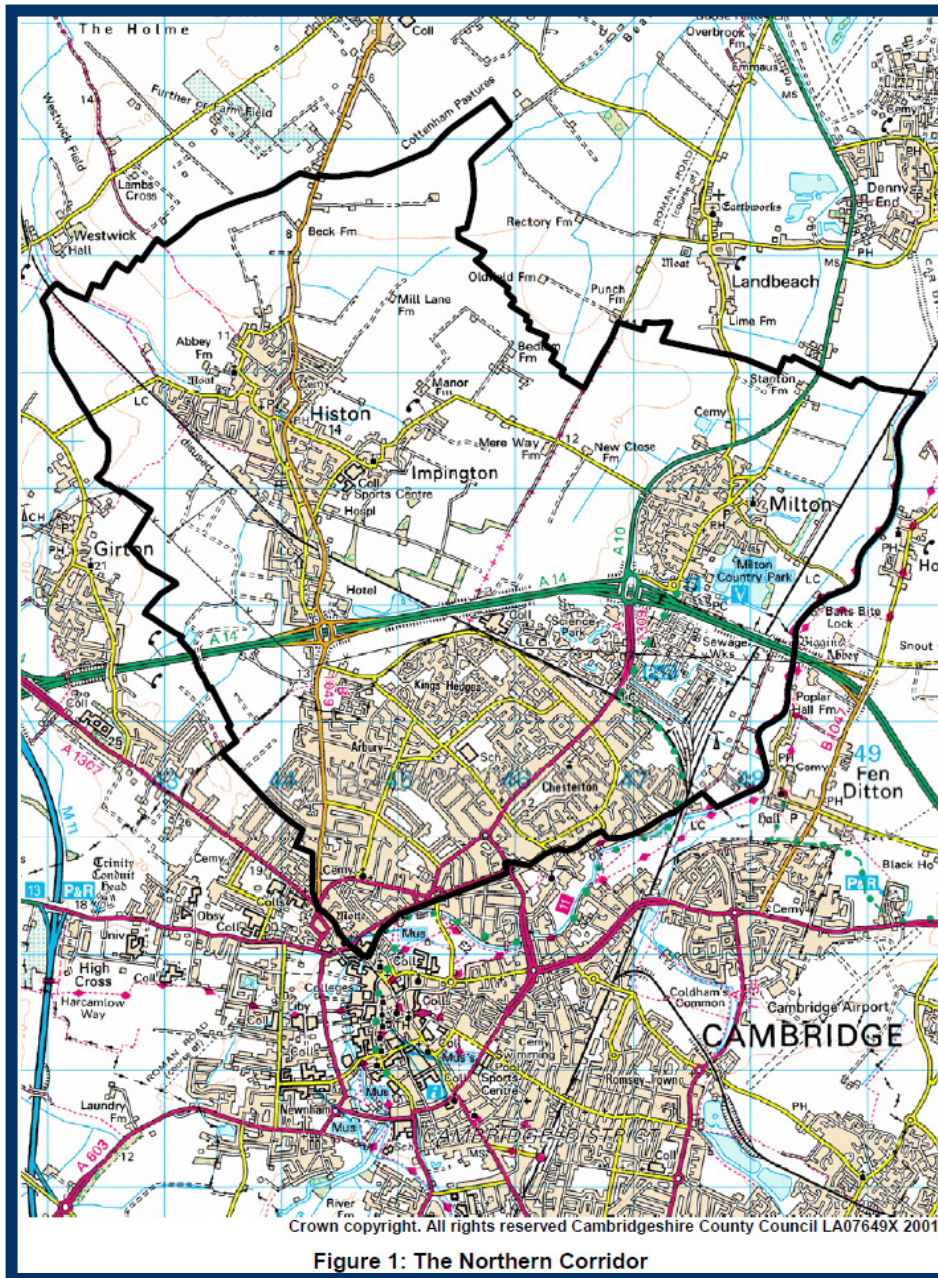
# Northern Corridor Area Transport Plan – S106 Funding Update

**Sinéad O Donoghue**

**Capital and Funding Manager**

**18 December 2014**

# The Northern Corridor



# Northern Area Corridor Transport Plan (NCATP)

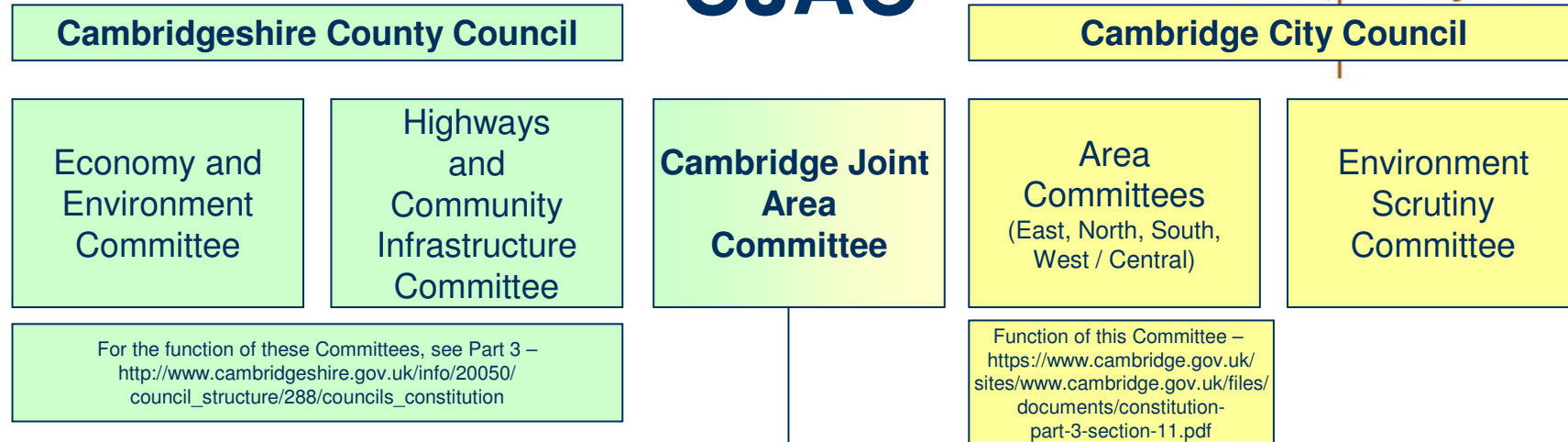
- ◆ Jointly produced by City, South Cambs and County
- ◆ Helps identify new transport infrastructure needed to facilitate new development in the north of City and adjoining parishes in South Cambs; and
- ◆ Provides a means of calculating how much individual development sites should contribute towards that transport infrastructure
- ◆ Contributions collected via Section 106 agreements
- ◆ Emphasis of any new transport capacity created is for pedestrians, cyclists and public transport

# Process for allocating S106 funding



- ◆ Long list of projects drawn up for assessment (workshops)
- ◆ Officers assess proposals using Project Selection Criteria
- ◆ Officers take back proposed projects for review/agreement
- ◆ Previously, workshops and review/agreement done by Area Committees (in the City) and Parish Councils
- ◆ Going forward the Cambridge Joint Area Committee (CJAC) will take on this role (in the City)
- ◆ Officers report back to Economy & Environment Committee (County) which makes the final decision on allocating monies

# CJAC



## CJAC – advise on:

- Strategic transport issues in the City
- Transport issues of more than local significance in the City such as:
  - traffic management schemes
  - local centre improvements
  - parking charges
  - **priorities for s106 funding for transport related projects**
  - public transport

## CJAC – will determine:

- Priorities for the Local Highway Improvement Initiative in the City
- Objections relating to minor Traffic Regulation Orders in the City – e.g. loading bays, disabled bays, cycle lanes, 20mph limits on non strategic roads
- To resolve detailed design issues for traffic management proposals in the City

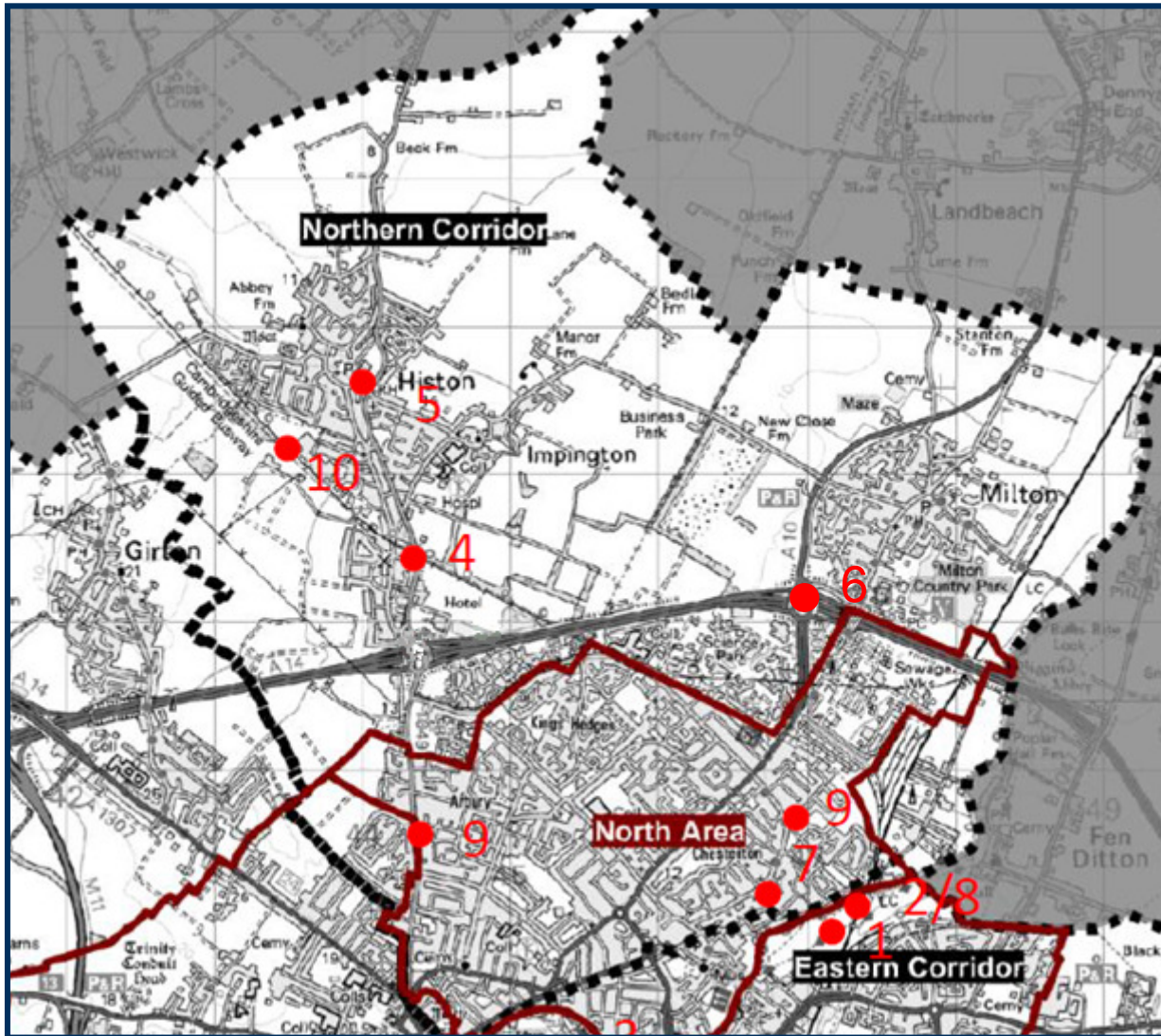
# Process for allocating S106 funding

- ◆ First Filter – Proposed project fit with NCATP  
In line with current national and local transport policy, the emphasis of any new transport capacity in the area is on public transport, traffic restraint, cyclists and pedestrians. Identify how additional capacity of this nature can be provided.
- ◆ Second Filter- deliverability, affordability and value for money  
Consider proposed project in respect of each of these criteria, including match funding options.
- ◆ Third Filter – Prioritisation of proposed projects based on Cost Benefit Analysis  
Quantify in monetary terms as many of the costs and benefits of a proposal as feasible, for transport purposes, when completing the Transport Project Assessment and Prioritisation Form.

## S106 NCATP contributions to date

- ◆ Collected over £5.2 million
- ◆ Spent over £1.5 million
- ◆ Committed £3.5 million
- ◆ 18 schemes have benefited/will benefit from funding

# Schemes approved for funding 2014



- 4. B1049 improvements southbound to A14 (£100K)
- 5. Junction at the Green improvements (£150K)
- 6. Widening cycleway north of the Jane Coston Bridge over A14 (£50K)
- 7. Water St/Fen Rd Cycling Improvements (£50K)
- 8. Chisholm Trail (Bridge) (£1.5M)
- 9. Feasibility studies for cycleways on Green End Rd linking to Science Park Station and, along Histon Rd (£20K)
- 10. Lighting the Guided Busway (£10K)



# Looking forward...

- ◆ NCATP will continue to be used to collect S106 contributions from developments until 6 April 2015
- ◆ After that national regulations change
- ◆ Pooling of S106 contributions will be restricted
- ◆ The Community Infrastructure Levy (CIL) will be used to pool developer contributions
- ◆ CIL is a per m<sup>2</sup> charge on development which the City Council will seek to implement in 2015

# Looking forward...

- ◆ S106 contributions which have been agreed but not yet collected will continue to be collected & allocated after April 2015 until all monies have been allocated
- ◆ We will be seeking views on schemes which could be funded from S106 in the Northern Corridor in late 2015 when more contributions are likely to be collected
- ◆ City, South Cambs and County Councils will continue to work together to determine how CIL will be allocated to fund new infrastructure