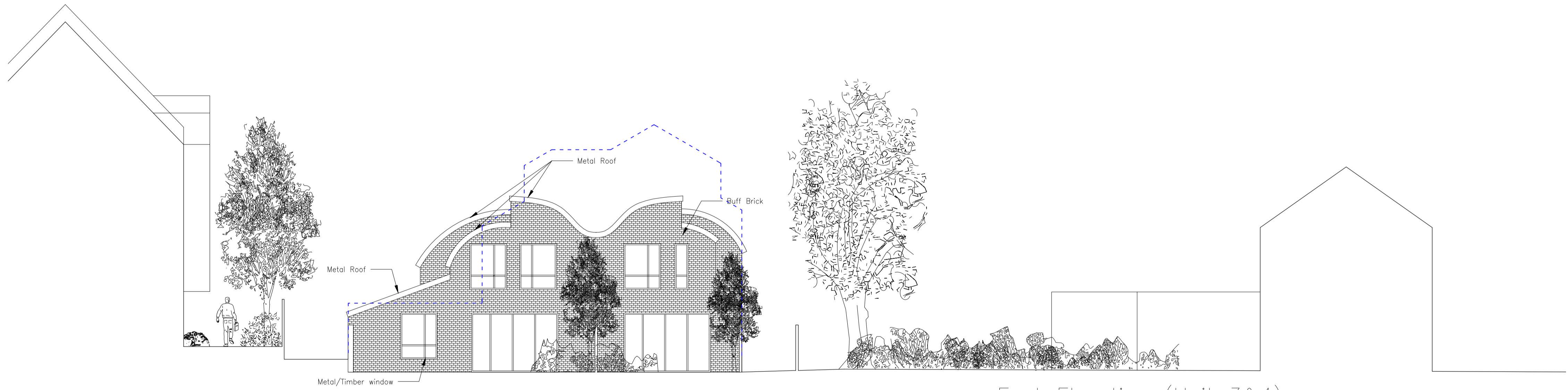


Previous scheme



West Elevation (Unit 3&4)



East Elevation (Unit 3&4)

revisions

PLANNING

**FREELAND REES ROBERTS**  
**ARCHITECTS**  
 25 City Road, Cambridge CB1 1DP  
 tel 01223 366555 fax 01223 312882  
 info@frrarchitects.co.uk

client  
**MPM Properties (AR) Ltd**

job title  
**Auckland Road Development  
 Cambridge**

drawing title  
**Proposed East and West Elevations  
 Unit 3&4**

scale	drawn by	date
1:100 @A1	YH	May 14

sheet / layout number	rev
12.066-G-SE311	--