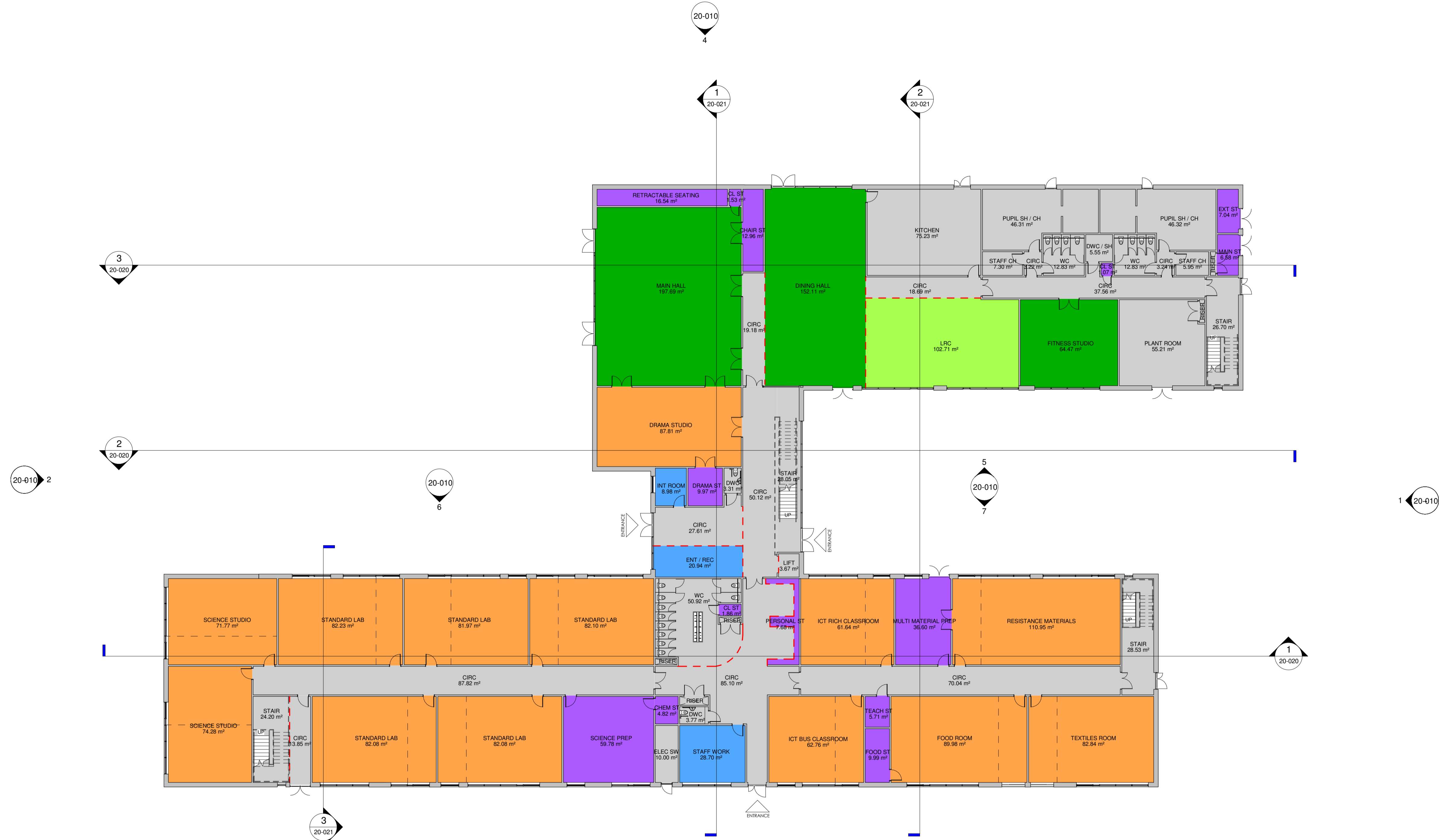
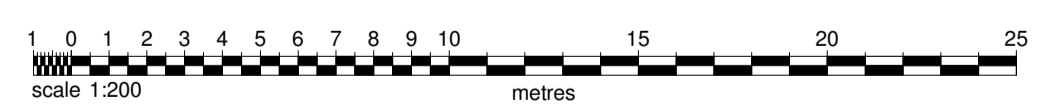


**Department**

- Basic Teaching Area
- Large Spaces
- Learning Resource Area
- Non Net
- Staff / Admin Area
- Storage



**1 GA Ground Floor Plan**  
1 : 200



**00-Z-Scale Bar\_1\_200**  
1 : 200

2	03-04-2014	TR	Corridor width to eastern wing increased in line with client instruction	DS
1	12-03-2014	TR	Corridor widths reduced in line with Wates instruction	DS
rev	date	by	description	chkd

**cpmg**  
 CPMG Architects Ltd 23 Worsley Gate Nottingham NG1 1NU  
 telephone: 0115 958 9500 facsimile: 0115 958 9700  
 email: nottingham@cpmg-architects.com website: www.cpmg-architects.com  
 job title

**NORTH CAMBRIDGE ACADEMY**

drawing title  
**Ground Floor Plan**  
**General Arrangement**

drawing status

**PLANNING SUBMISSION**

drawn by	date	checked by	scale
TR	31-03-14	DS	1 : 200
job no.	drawing no.	revision	media
7517	20-000	2	A1

© Copyright of CPMG Architects Limited 2012. All rights reserved.  
 No part of this publication may be reproduced, stored in any retrieval system or transmitted in any form or by any means without prior permission of CPMG Architects Limited.  
 Do not scale from drawing, use figured dimensions only. All dimensions to be checked on site  
 ISO 9001 QUALITY MANAGEMENT 14001 ENVIRONMENTAL MANAGEMENT