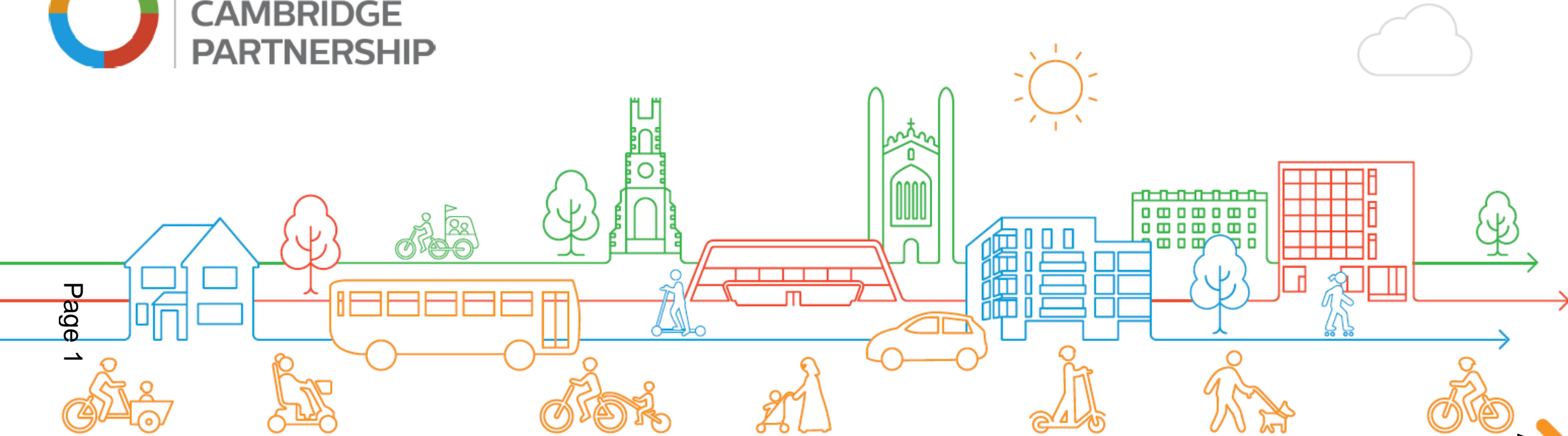




**GREATER
CAMBRIDGE
PARTNERSHIP**



Page 1

Milton Road Update

November 2023

Agenda Item 8

Progress to date



Areas Complete

- Mitchams Corner to Herbert Street (East)
- Roundabout NE, SE, NW quadrant and the roundabout itself has now been planted
- Roundabout to Union Lane (East)
- Fraser Road to Ramsden Square (East)
- Kings Hedges Junction NW Quadrant



Areas in progress

- Mitchams Corner to Gilbert Road (West)
- Roundabout SW quadrant
- Arbury Road to Ramsden Square (West)
- Kings Hedges SE quadrant
- Ramsden Square to Busway (East)



91 trees installed so far



Progress to date

Page 3



Kings Hedges NE Quadrant



Southern section at Mitcham's
Corner western side



Opposite Fraser Road
looking North

Progress to date

Page 4



Roundabout NW quadrant



Roundabout planting

Key upcoming tasks

- Works to commence outside the shops at Arbury Road
- Completion of works in total from Mitcham's Corner to Herbert Street which includes carriageway resurfacing in February (Night works)
- Works to the islands at the roundabout commencing in January (most likely 4-way lights)
- Completion of work at Kings Hedges junction on the SE quadrant and switch over to the SW quadrant

**Works still on track to complete next year late summer /
autumn**

Other items

- Cycle parking – planned to install 6 number stands outside the shops at Mitcham’s corner and at least 16 number at the Arbury Road shops.
- Parking restriction signs at Mitcham’s corner – on order
- Footpath widths
- Lighting – dimming & fitting of shields
- Bus Stops – temporary & permanent
- George Street

Questions

This page is intentionally left blank