



Greater Cambridge City Deal

Aaron Blowers & Patrick Joyce

Cambridge Fringes JDCC Member Development Seminar
18 May 2016



City Deal objectives

- ◆ Unleash the next wave of the 'Cambridge Phenomenon'
- ◆ Ensure that Greater Cambridge is able to keep competing on an international stage
- ◆ Ease transport constraints
- ◆ Ease housing affordability issues
- ◆ Improve the links between skills and jobs
- ◆ Bring the different Councils and other partners together as never before



ENTERPRISE PARTNERSHIP



UNIVERSITY OF
CAMBRIDGE



Cambridgeshire
County Council



South
Cambridgeshire
District Council

The funding tranches

- ◆ Three tranches of potential funding
- ◆ Funding release based on independent economic assessments
- ◆ Tranche 1 (2015-20): £100 million
- ◆ Tranche 2 (2020-25): Up to £200 million, based on 2019 assessment
- ◆ Tranche 3 (2025-30): Up to £200 million, based on 2024 assessment

Tranche 1 prioritised programme

A1307 corridor to include bus priority

A428-M11 bus priority

Chesterton-Abbey (Chisholm Trail) bridge

Chisholm Trail cycle links

City centre capacity improvements

Cross-city cycle improvements

Histon Road bus priority

Madingley Road bus priority

Milton Road bus priority



GREATER CAMBRIDGE
GREATER PETERBOROUGH

ENTERPRISE PARTNERSHIP



UNIVERSITY OF
CAMBRIDGE



Cambridgeshire
County Council



South
Cambridgeshire
District Council

Role of JDCC in schemes

- ◆ The Councils have delegated responsibility for planning consent for City Deal infrastructure schemes to the JDCC
- ◆ Planning consent required for schemes that are not in the public highway
- ◆ Schemes that are in the public highways can be delivered under highways powers
- ◆ Not all schemes will need planning consent – that depends on the specific schemes to be delivered

Planning and City Deal schemes

- ◆ Tranche 1 City Deal schemes that may (depending on preferred measures) require planning consent:
 - ◆ A1307 corridor to include bus priority
 - ◆ A428-M11 bus priority
 - ◆ Chisholm Trail cycle links
 - ◆ Madingley Road bus priority

Page 6

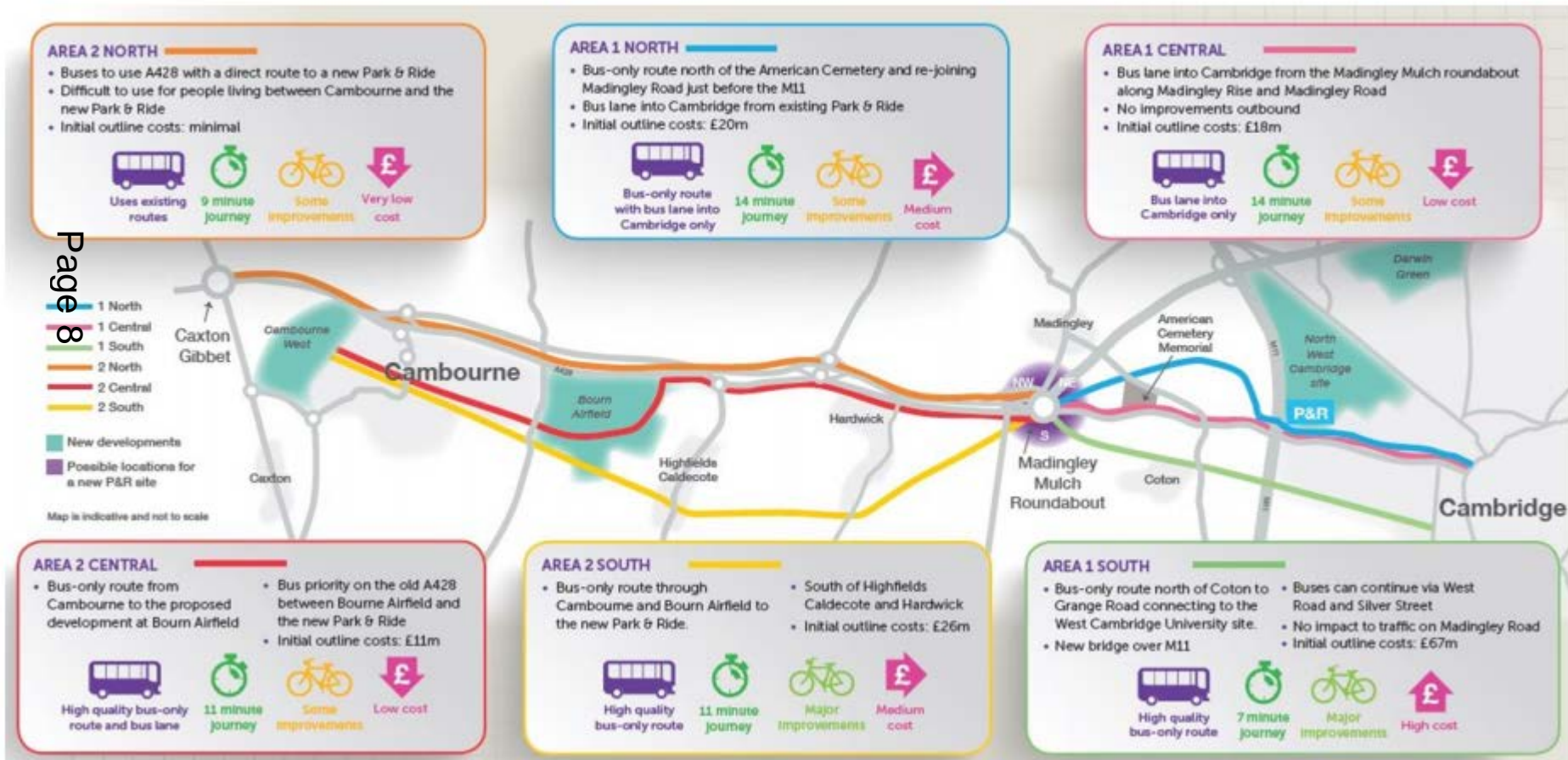
For example: Cambridge-Cambourne

- ◆ Planning consent likely to be needed for part/all of option:
 - ◆ Area 1 North (planning for route around Cemetery)
 - ◆ Area 1 South (whole scheme)
 - ◆ Area 2 Central (partly on highway)
 - ◆ Area 2 South (whole scheme)
- ◆ Options to be delivered under highways powers:
 - ◆ Area 1 Central
 - ◆ Area 2 North

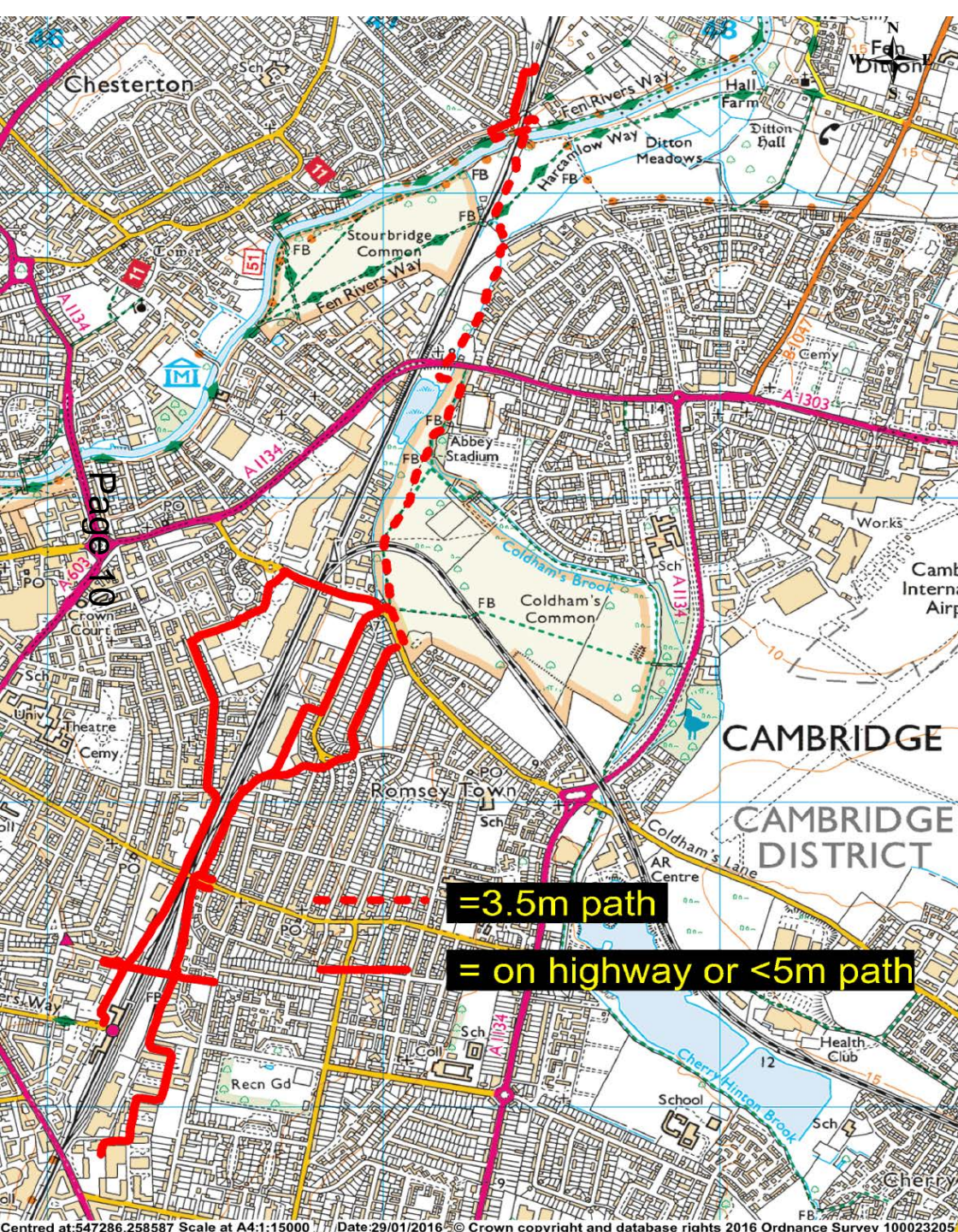
Page 7

For example: Cambridge-Cambourne

Figure 1: The 6 Options Published for Consultation



Chisholm Trail and Bridge



Programme

#	Milestone or Phase	Date
1	Initiation – Project Initiation Document and preparation	Complete
2	Route profiling and outline phasing	Complete
3	Public consultation and exhibitions	Complete
4	Land negotiations and Planning Application Submission	Summer 2016
5	Board approval to construct scheme	Autumn 2016
6	Land negotiations, detailed design and preparation of contract documents	Summer 2016 to Summer 2017
7	Finalise necessary land and permissions. Mobilise contractor.	Summer 2017 to Autumn 2017
8	Construction of standalone phases (those north of Coldhams Lane first, as they are not dependant upon development sites)	2017 to 2020







Site layout → *Site and proposed structure*



Proposed Structure
22m long x 5m wide
2.8m headroom,
25 degree skew,
0.9m min cover

OSBORNE

This page is intentionally left blank