

NOT PROTECTIVELY MARKED

Neighbourhood profile update Cambridge City West Neighbourhood



September 2008



Jon Hutchinson,
Neighbourhood Policing
Inspector

**Paul Griffin, Strategy Officer
(Community Safety),
Cambridge City Council**



NOT PROTECTIVELY MARKED

CONTENTS

1.	INTRODUCTION	2
	Aim	2
	Methodology	2
2.	PREVIOUS PRIORITIES & ENGAGEMENT ACTIVITY	3
	Previous Priorities	3
3.	EMERGING ISSUES	7
4.	RECOMMENDATIONS	10
5.	CURRENT CRIME AND INCIDENT LEVELS	11

1. Introduction

Aim

The aim of the Neighbourhood profile update is to provide an overview of action taken since the last reporting period, identify ongoing and emerging crime and disorder issues, and provide recommendations for future priorities and activity in order to facilitate effective policing and partnership working in the area.

The document should be used to inform Area Committee meetings, multi-agency Neighbourhood Action Groups and Neighbourhood Policing Teams, so that issues can be identified, effectively prioritised and partnership problem solving activity undertaken.

Methodology

This document was produced using the following data sources:

- Crime and Incident data, from April 08 – July 08 and as a comparison data from December 08 – March 08 and April 07 – July 07
- Information from the Neighbourhood Policing teams, September 08
- Cambridge City Council, City Services data, April – July 2008

2. Previous Priorities & Engagement Activity

Previous Priorities

At the Area Committee meeting on 15th May 2008, the following issues were adopted as priorities. The tables below summarise action taken and the current situation regarding the priorities which were set:

1. Violent Crime and Anti-Social Behaviour in the City Centre associated by the Night-Time Economy	
Objective	To reduce the level of intimidating behaviour, aiming to make the City Centre attractive to families at all times of day
Action Taken	<p>Extra police resources have been brought into the City Centre, structuring patrols around potential flashpoints. The Community Safety Partnership has provided funding to increase the numbers of officers on duty on Friday and Saturday nights, specifically for foot patrols to act as a deterrent to anti-social behaviour and violence. New powers available under Section 27 of the Violent Crime Reduction Act have been utilised, directing disorderly individuals and groups to leave the City Centre.</p> <p>The City Council has maintained its Cumulative Impact Policy for licensed premises in the City Centre. This means that any premises seeking a new licence must prove that this will not contribute to any increase in crime and disorder. Since the introduction of this policy, there has been a reduction in applications for new, or variations to existing licenses.</p> <p>Pubwatch and Cambridge Business Against Crime (CAMBAC) continue to flourish, using a shared radio network to pass messages between premises warning of potential volatile groups and to refuse entry to those who pose a risk. An information sharing agreement has been formulated between the Police and Pubwatch, allowing the Police to provide Pubs and Clubs with photographs of known troublemakers.</p> <p>In the period, CCTV has continued to contribute to arrests in the City Centre.</p> <p>A portable metal detector has been used at pubs and clubs in the City Centre in order to identify revellers who may be in possession of knives or weapons. It is encouraging to report that with thousands of people walking through the detectors there have been no people carrying weapons.</p> <p>Presentations are planned by the Police as part of Freshers Week, explaining to students what behaviour is acceptable in the City Centre.</p>

Current Situation	The City Centre remains a vibrant place to be at night time. Continued focus needs to be maintained in order to re-enforce the desire for the City Centre to be a family friendly location at all times of day.
Continue or Discharge?	Continue

2. Anti-Social Behaviour and Environmental Issues on Jesus Green, Christs Piece, Mill Pond and Parkers Piece.

Objective	To improve the quality of the City's green areas allowing local residents and visitors to thoroughly utilise our public spaces
Action Taken	<p>City Council Enforcement Officers carried out daytime and weekend educational patrols on Jesus Green throughout June and July advising visitors to use the bins when they left for the day to try and reduce the amount of litter left on the open spaces. City Council Streetscene litter pickers did report improvements to the amount of litter on the corresponding Monday mornings. The enforcement team is in the process of appointing an officer who will spend in the region of 24 hours per week carrying out littering and punt tout operations on the green open spaces.</p> <p>The Police have re-structured duties, ensuring that officers have patrolled the green spaces every night of the week since 1st June. These patrols have been conducted by Police Officers and PCSOs. PCSOs with language skills have been brought into the area to speak with groups of overseas students, ensuring they are aware of personal safety issues, as well as what standard of behaviour is required when socialising on green areas. Reports of Anti-Social Behaviour in the green areas are lower than in previous summer holidays.</p> <p>An emerging trend has been identified of groups of youths seeking confrontation with other groups. These groups have given themselves names based upon the postcode in which they live. Extra police resources have been pooled in order to tackle this.</p> <p>A Community Alcohol Partnership has been launched in the Mill Rd area following concerns that young people were purchasing alcohol from licensees in this area then drinking on the green spaces. This is a partnership that comprises Trading Standards, Licensees, City Council and the Police. It aims to reduce the supply of alcohol to juveniles. Early indications are that this is having a significant impact. Where young people have been found drinking, the alcohol has been seized and their parents notified of their behaviour.</p>

	Groups of older "Streetlife" drinkers have generally moved away from the green areas of the City Centre, tending to congregate on Petersfield Green, Arbury Court, Fitzroy Street and outside The Guildhall.
Current Situation	Towards the end of the summer there has been an increase in robberies (muggings), specifically around Parkers Piece. However, three key suspects have been arrested and are now remanded in custody.
Continue or Discharge?	Discharge. Focus on robbery offences, especially with a new influx of students arriving who have traditionally been targets of such offences.

3. Tackling problems of anti-social cycling and driving in the City Centre, and improving road signs in the City Centre

Objective	To reduce instances of anti-social cycling and driving.
Action Taken	A project group has been formed involving the Police, the City Council, the Fire Service and members of the County Council cycling and road safety team. The first meeting took place in July, including attendance and input by the Cambridge Cycling Campaign, with a follow up to arrange 'days of action' held this month.
Current Situation	<p>The dates and locations of four campaigns targeting anti-social driving and cycling have been agreed and the date of a week of action aimed particularly at encouraging cyclist safety has been confirmed for the week following the end of British summer time (26 October 2008).</p> <p>The cycle safety campaign will stress that the laws relating to, for example, driving without lights or failing to obey traffic signals are there to safeguard cyclists and other road users. There will be a clear enforcement element with Police issuing fixed penalty notices (FPN), but where the offence involves cycling without lights, offenders will be issued with a set of lights on payment of the FPN. Road safety publicity will also be distributed by cycling education officer and road safety officers.</p> <p>The Project in Cambridge will also entail linking in with the County Council's 'Be safe, be seen' educational project. Visits to language collages and schools are also to form part of the project with visits being carried out by Police and Fire Service.</p>
Continue or Discharge?	Continue

Engagement Activity / Notable Projects

- The West Neighbourhood Policing Team is committed to engaging with the community. This has helped assess the “feeling on the ground” and allowed the Team to focus on areas that are of concern to local residents.
- Key individuals across the Neighbourhood have been identified and visited, asking for their views and advice on a monthly basis. This includes: Councillors, University/Colleges, CAMBAC, Religious Leaders, Neighbourhood Watch co-ordinators, Youth Workers, Head Teachers and City Centre Management.

The themes that continue to reappear as concerns are:

- Issues associated with street drinkers and beggars
 - Cycle and Vehicle offences
 - Underage drinking in public areas
- Ongoing work has been conducted over the summer months to reduce the level of harassment by ‘punt touts’. This has been lead by the City Council’s Safer Communities Section and has had some positive results. There have been fewer complaints this year on this issue than in previous years.

Emerging Issues

Neighbourhood trends

Total crime in the Neighbourhood has stayed the same compared to the same 4 month period last year. Compared to the previous period levels of crime have increased. The increase in crime is attributable to a rise in burglaries of sheds and businesses, cycle theft, antisocial behaviour, and other crime. An increase in cycle theft has occurred in Market Ward. Levels of Anti-social behaviour (ASB) have increased from the previous period but have remained at a similar volume to the same period last year.

Newnham

- Levels of crime in Newnham ward have decreased to 167 from 229 over the period in comparison to last year.
- Theft from motor vehicle offences have decreased over the period from 39 offences in the previous period to 17 offences this period. April, June and July all had the same amount of offences with 3, while May had 8 offences. The following were repeat locations Grantchester Meadows (2 offences) and Wansworth Grove (3 offences).
- Violent crime has increased over the period from the previous period. Fen Causeway had the most amount of violent crime with 4 offences over the period.
- Incidents of anti-social behaviour have increased over the period but have stayed the same for the same period last year. Fen Causeway had the most antisocial behaviour with 10 offences reported over the period. Lammas Land, Lammas Field and Silver Street all had 7 offences reported.
- Between April and July there were 14 reports of abandoned vehicles in the ward. This included five which were not on site following inspection and four which were later claimed by their owners.
- Between April and July there were 23 reports of fly tipping in the ward. On 15 occasions the fly tip was removed within 24 hours but there was insufficient evidence to take enforcement action. In 1 case no further action was taken as no flytip was found on site following inspection. Two letters to trade offenders requesting waste transfer notes were also sent along with five warning letters to domestic offenders. A repeat location ¹ for fly tipping was Lammas Land / Fen Causeway.

¹ Greater than 3 occurrences

- Between April and July 11 derelict cycles were dealt with / 22 items of detrimental graffiti were removed between April and July.
- A CCTV system was installed at Lammas Land following instances of damage to the public toilets and the paddling pool. The system was paid for by a grant from the Safer Communities Partnership fund and became operational in April 2008. In the period since, there has been no further damage to the toilets or the pool, and there have been no significant instances of fly-tipping around the recycling point, a past problem area. The system has not made a measurable impact on ASB in and around the car park, and in the light of this a proposal to extend the system is under consideration.

Castle

- Total crime has increased in Castle over the period and has increased from the same period last year from 148 to 175 offences.
- The majority of the increases have occurred in robberies, cycle theft, theft from shops and burglary.
- Cycle theft has increased to 59 for the period compared to 41 the previous period and 32 the same period last year. Trinity Street had 9 pedal cycles taken, Storeys Way had 6 cycles taken and Magdalene Street had 5 cycles taken.
- Anti-social behaviour has increased from the previous period but has stayed the same as the same period last year. The most notable areas for antisocial behaviour were Huntingdon Road with 12 offences and Oxford Road with 7 offences.
- Dwelling burglary has increased over the period to 18 offences. The most burglaries occurring in Canterbury Street, Hoadly Road and Trinity Street all with 2 offences.
- 20 derelict cycles were dealt with between April and July in the Castle Ward. A repeat location¹ was Windsor Road.
- Nine abandoned vehicles were reported between April and July. Four were not on site following inspection, three were later claimed by their owners and two were removed and taken to a compound.

- Six reports of fly tipping in the Castle ward between April and July. In four cases the fly tip was removed within 24 hours but there was insufficient evidence to take enforcement action. A warning letter was sent to a domestic offender and enforcement action is ongoing in the other case.

Market

- Total crime has decreased from the previous period and has also decreased from the same period one year ago.
- Decreases were seen in the theft of motor vehicles and theft from motor vehicles. These have both decreased from the previous period and the same period as last year.
- Other crime has also greatly decreased from 484 offences in the previous period to 50 offences this period. There were 544 offences in the same period last year.
- Violent crime has increased over the period with 313 offences compared to 308 the previous period. May had the most amount of Violent Crime (Actual Bodily Harm) committed with 31 offences reported. June saw 29 offences reported and this went down to 23 offences reported from July. Most offences occurred in Lion Yard (10) and Corn Exchange Street (12).
- Cycle theft has increased over the period with an increase of 125 cycles being stolen over the period compared to the last period. A similar amount of cycles were taken the same period last year. The main areas for thefts were Chesterton Road (16), Parkside (13), Regent Street (13) and Grafton Centre (12).
- Antisocial behaviour has increased from the previous period with a total of 740 offences overall. The same number of offences occurred in the same period last year. Most offences occurred on the green areas – Jesus Green, Christs Pieces, Midsummer Common as well as St Andrews Street, Regent Street.
- 170 fly tipping offences were reported over the four months April to July. In 142 cases the fly tip was removed within 24 hours but there was insufficient evidence to take enforcement action. 13 cases are undergoing further investigation. 3 warning letters were sent to domestic offenders and 12 letters to trade offenders requesting waste transfer notes were also sent. Market Square (13), Market Street (9) and Sidney Street (9) were the hotspots during this period.

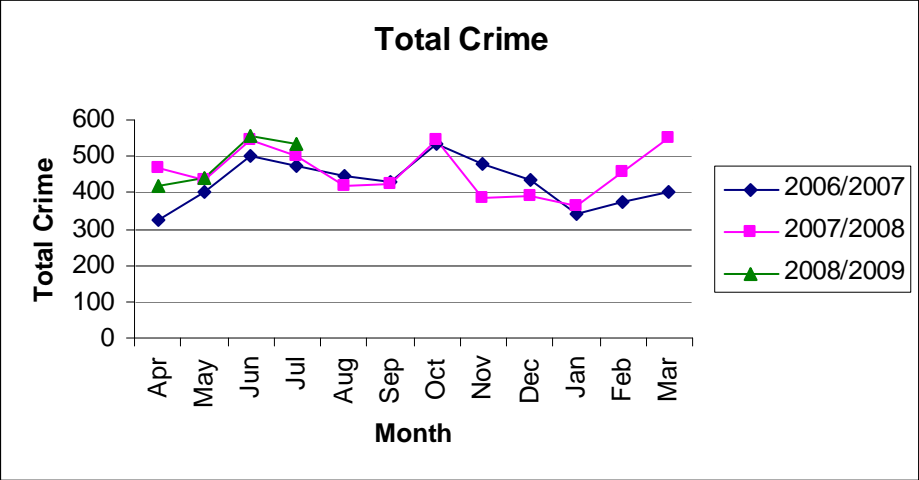
- 4 abandoned vehicles were reported between April and July. This included one which was not on site following inspection and another which was removed and taken to a compound
- Between April and July 600 abandoned cycles were dealt with. Little St Mary's Lane (40), Sidney Street (37) and Tumpington Street (32) were the hotspots during this period.
- 1040 reports of antisocial cycling occurred between April and July. Most of these occurred in Trinity Street (249), Sidney Street (230) and Bridge Street (221). These figures are provided by the City Rangers service and relate to the number of occasions a City Ranger has stopped and spoken to an individual cycling anti-socially.
- 194 needles were removed between April and July. This included approximately 100 needles which were removed near a phone box at Petty Cury. 40 needles were removed from the Grafton West Car Park, the majority of which were found on one occasion. 32 needles were also removed from Fair Street, the majority of which were found on one occasion. These were all 'loose' finds by City Rangers or other Streetscene staff.
- Between April and July 33 items of detrimental graffiti were removed. King Street (4) was a hotspot during this period.

Recommendations

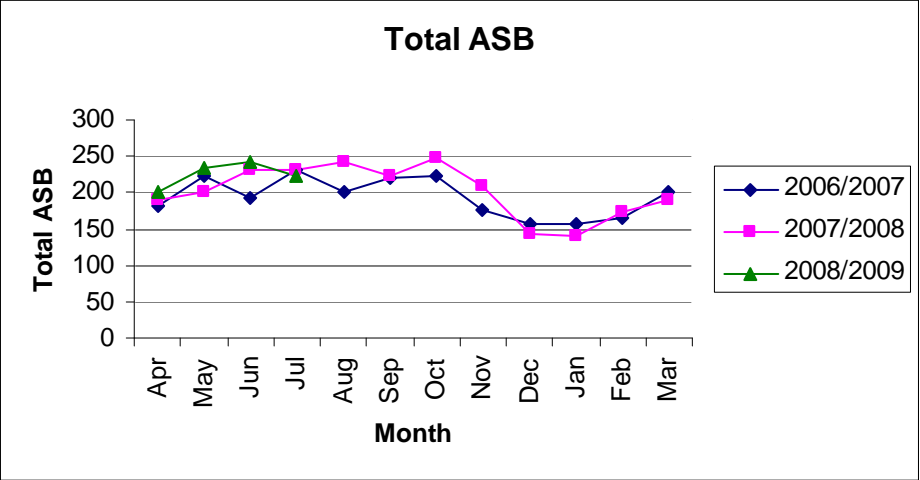
- Violent crime associated with the night time economy
- Robberies (muggings) across the Neighbourhood
- Cycle crime across the Neighbourhood
- Issues surrounding anti-social use of vehicles and cycling – promoting responsible use

1. Current Crime and Incident Levels

Total Crime



Total ASB



Current Crime and Incident Levels in Neighbourhood, by Ward

			Dwell. Burg.	Othe r Burg .	Violen t Crime	Robbe ry	Theft of Vehicl e	Theft from Veh.	Cycl e Thef t	Theft from Shop	Crimina l Damag e	Othe r Crim e	TOTA L CRIM E	TOTA L ASB
Nhod	City West	<i>Apr 08 – Jul 08</i>	36	62	350	17	5	39	369	289	118	664	1949	898
		<i>Dec 07– Mar 08</i>	36	51	323	12	14	86	218	341	126	557	1764	649
		<i>Apr 07 – Jul 07</i>	36	58	394	23	22	65	320	230	156	644	1948	851
Wards	Newnham	<i>Apr 08 – Jul 08</i>	6	20	24	0	1	17	44	6	18	33	167	78
		<i>Dec 07– Mar 08</i>	7	10	7	0	4	39	36	5	11	40	159	35
		<i>Apr 07 – Jul 07</i>	12	22	15	2	12	33	50	2	22	59	229	77
	Castle	<i>Apr 08 – Jul 08</i>	18	6	13	3	2	11	59	5	17	41	175	80
		<i>Dec 07 – Mar 08</i>	10	9	8	0	4	16	41	0	27	43	158	37
		<i>Apr 07 – Jul 07</i>	12	9	14	0	2	15	32	4	21	39	148	73
	Market	<i>Apr 08 – Jul 08</i>	14	36	313	14	2	11	266	278	83	50	1067	740
		<i>Dec 07 – Mar 08</i>	9	32	308	12	6	31	141	336	88	484	1447	577
		<i>Apr 07 – Jul 07</i>	14	27	365	21	8	17	238	224	113	544	1571	701