

# **HISTORIC ENVIRONMENT PRESENTATION**

**South Area Committee 24 September 2009**

- **Current Government Policy**
- **Cambridge's Historic Environment**
- **Conservation Areas and Appraisals**
- **The Pro-active Conservation Programme**
- **Historic Environment Strategy**
- **Developing Government Policy**

**John Preston Historic Environment Manager Cambridge City Council**

---

# Current Government Policy

- It is fundamental to the Government's policies for environmental stewardship that there should be effective protection for all aspects of the historic environment.
- The physical survivals of our past are to be valued and protected for their own sake, as a central part of our cultural heritage and our sense of national identity...
- Their presence adds to the quality of our lives, by enhancing the familiar and cherished local scene and sustaining local distinctiveness

***PPG 15 Planning and the Historic Environment 1994***

---

# The Local Plan Vision for Cambridge

**‘...is of a compact, dynamic City with a thriving historic core surrounded by attractive and accessible green spaces. It will continue to develop as a centre of excellence and a world leader in the fields of higher education and research and it will foster the dynamism, prosperity and further expansion of the knowledge–based economy’**

*Cambridge Local Plan 2006*

---

# The Historic Character of Cambridge

- Both Historic and Dynamic
- A complex blend of dramatic change and evolution
- Buildings in landscape setting
- Green space running right through the city from Stourbridge Common to Grantchester





# Designated Historic Environment

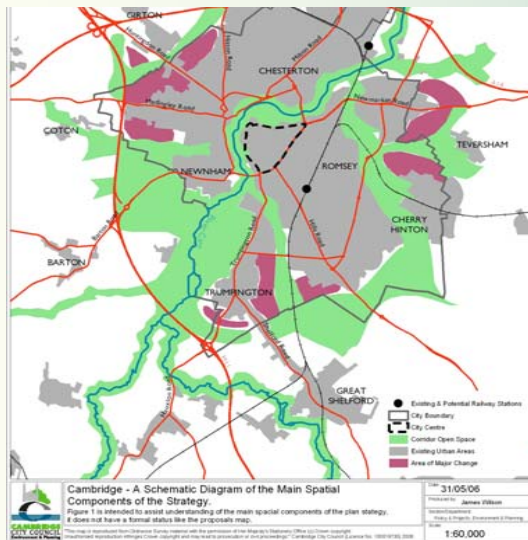
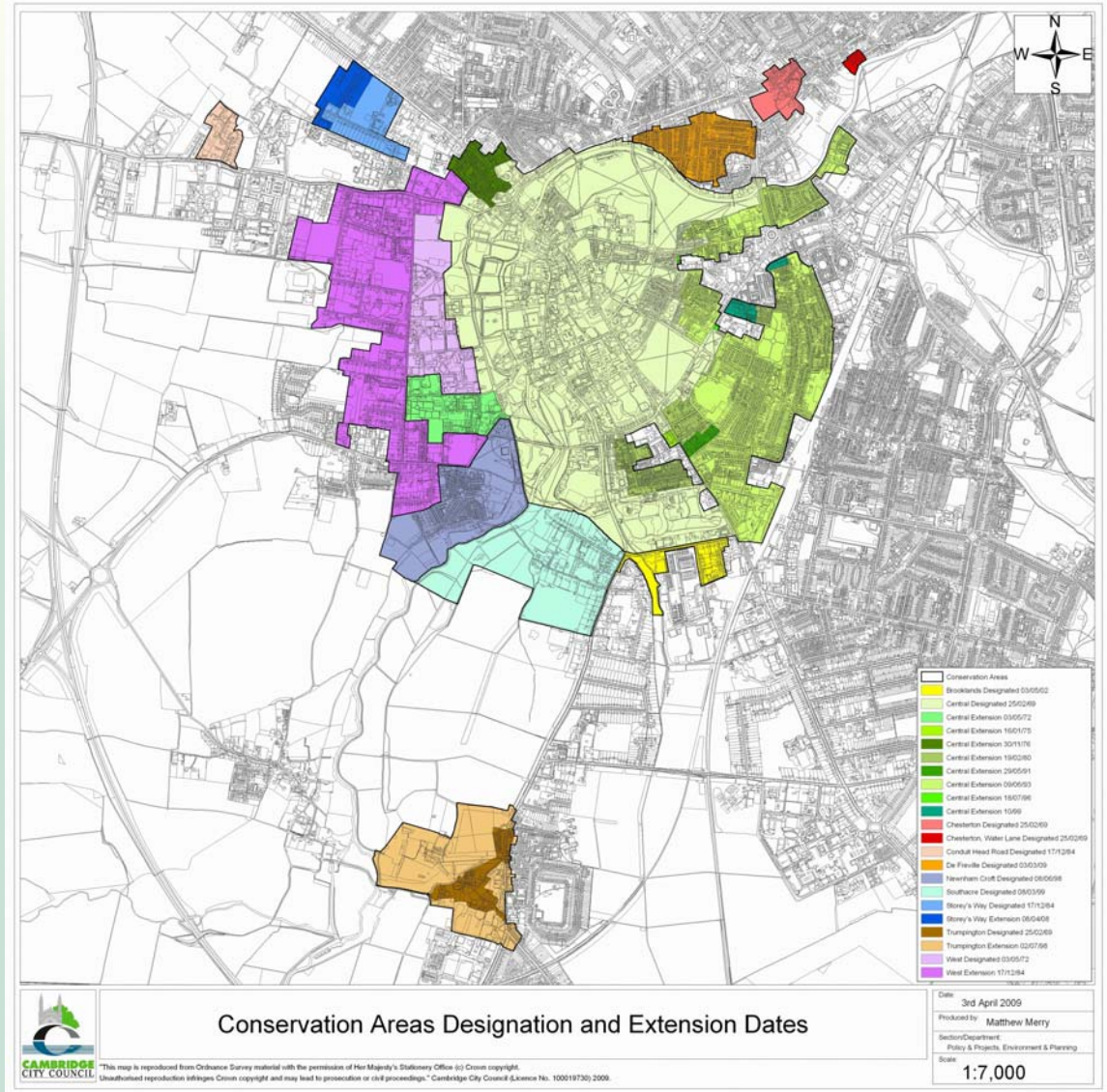
778 Listed Buildings  
61 grade I, 50 II\*, 667 II

5 Scheduled Ancient Monuments

11 Designated Historic Parks and Gardens ( 3 II\*, 8 II)

11 Conservation areas, over 700 ha

1000+ Buildings of Local Interest



# Conservation Area Appraisals

Kite 1996

Trumpington 1998

Mill Road and St Matthews 1999

Newnham Croft 1999

Southacre 2000

Brooklands 2002

Station Area 2004 (within SADF)

Historic Core 2006

Storeys Way 2007

*(all now downloadable)*

De Freville 2009

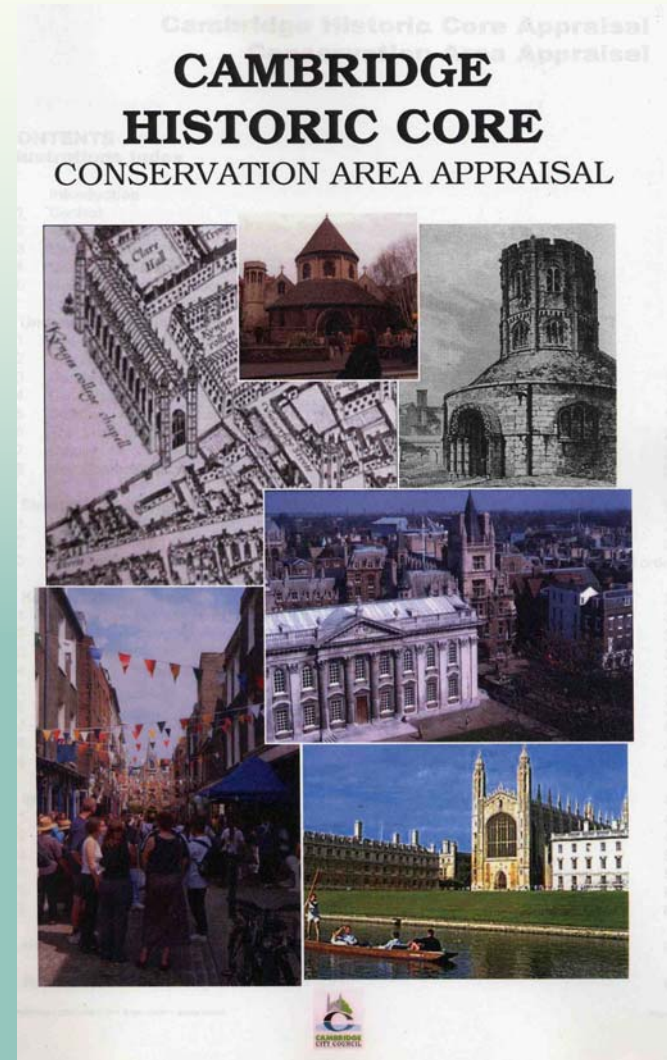
Chesterton 2009

Conduit Head Road (to Ctee 6.10.09)

*In progress*

Trumpington Review

NIAB / Howes Place



# Trumpington Review

**Trumpington noted in**

**“Conservation Areas at Risk” (English Heritage 2009)**

**Major growth area developments**

**Buildings at risk?**

**Inform new development**

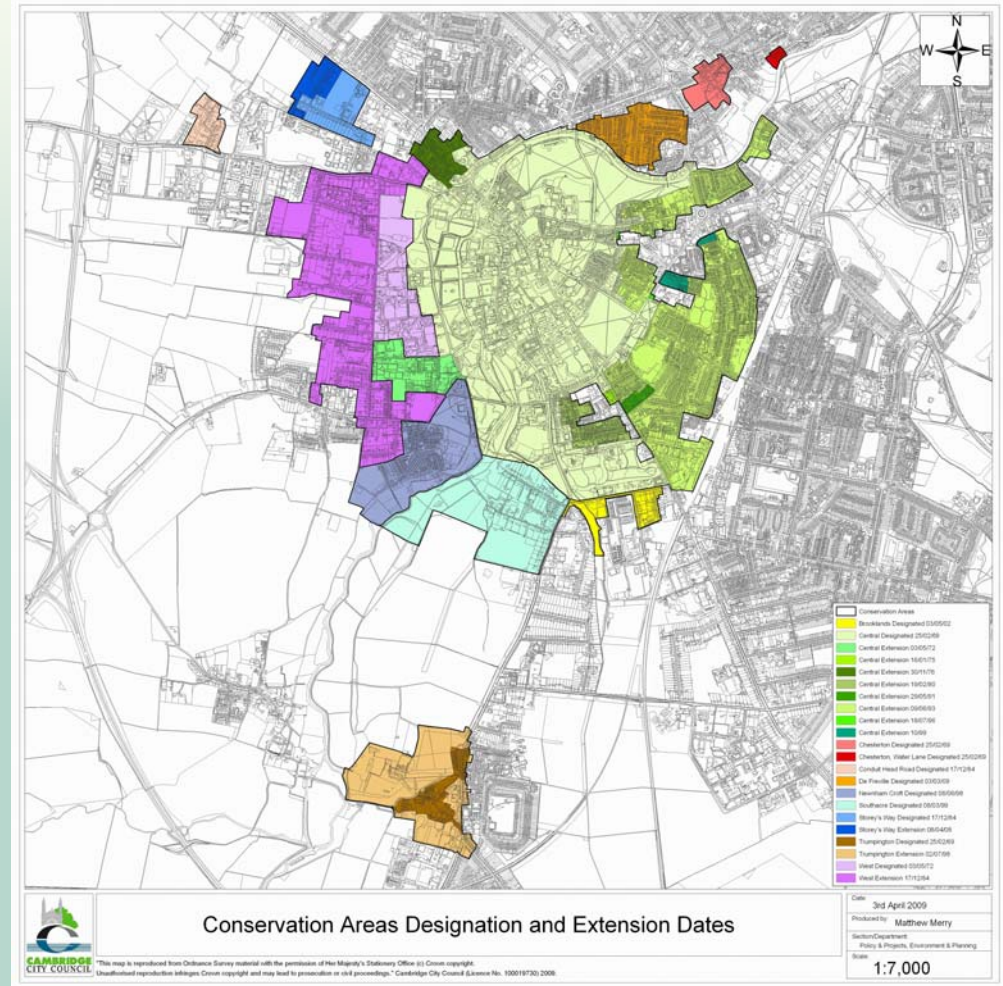
**Manage effects of development**

---



# Pro-active Conservation work

- Catching up on policy backlog
- Improve the evidence base
- Strategies
- 3-year Pro-active programme
- Suburbs and Approaches studies
- Conservation Area Appraisals
- Holy Trinity War Memorial





# Suburbs and Approaches studies

- Assessments of Local Distinctiveness (PPS 1)
- Not Conservation Areas, although may identify possible Conservation Areas
- Priorities decided in consultation with residents' groups
- 1<sup>st</sup> Tranche: **Huntingdon Road, Madingley Road, Barton Road**



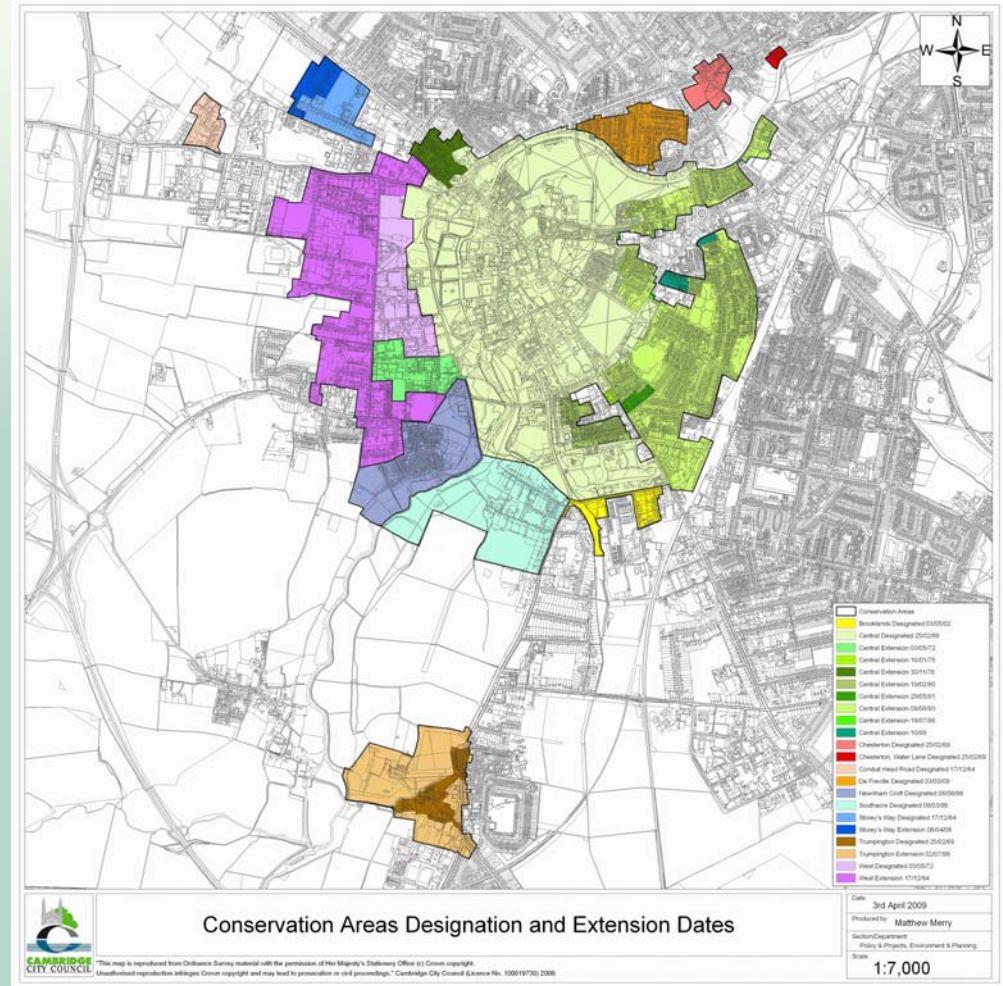
# 2009-10 Programme

## Conservation Area Appraisals:

- West Cambridge
- Mill Road and Romey

## Suburbs and Approaches studies

- Trumpington Road
- Long Road
- Hills Road
- Newmarket Road



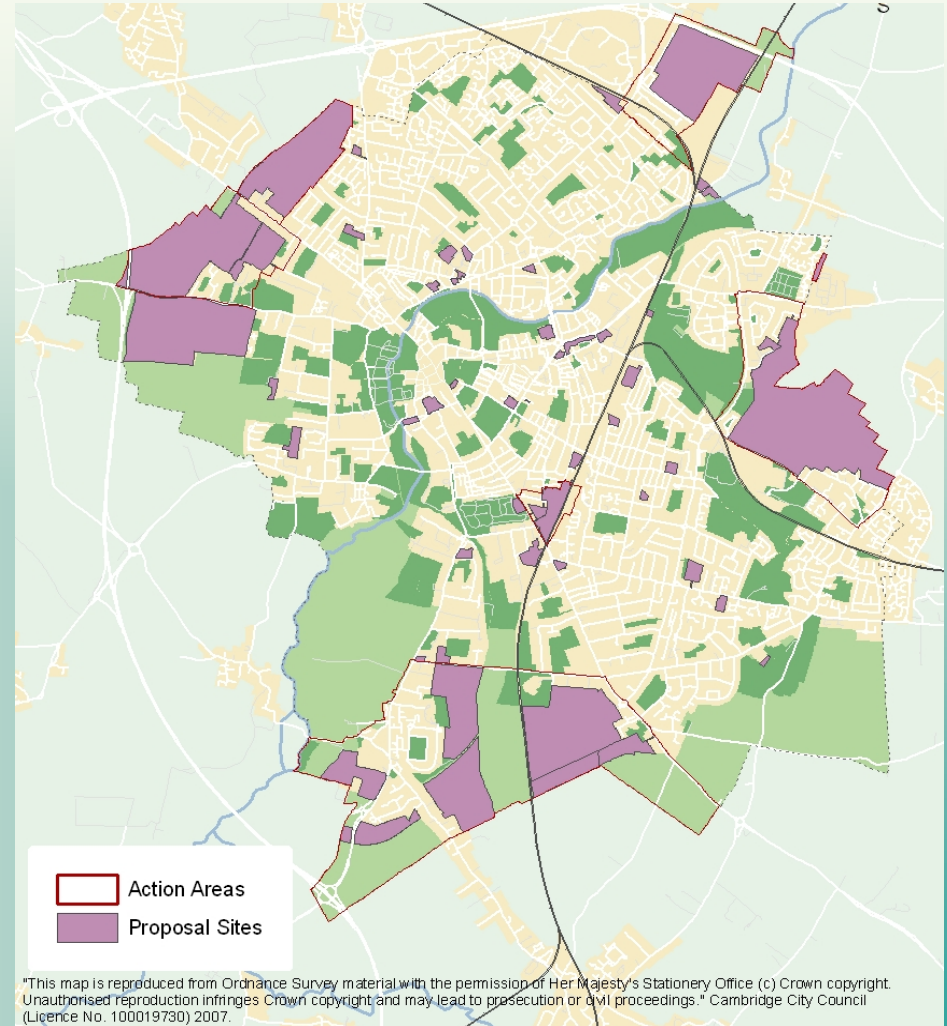
# Historic Environment Strategy

## Supplementary Planning Document

“ a strategic conservation plan”

## Issues and Options

- **Significance**
- local, national, international
- **Climate Change**
- impacts
- mitigation measures
- **Growth**
- **Access / Equalities**
- **Managing Change**





# Significance?



- Grantchester Meadows



- Byron's Pool





# Climate Change – The Big One!

Impacts

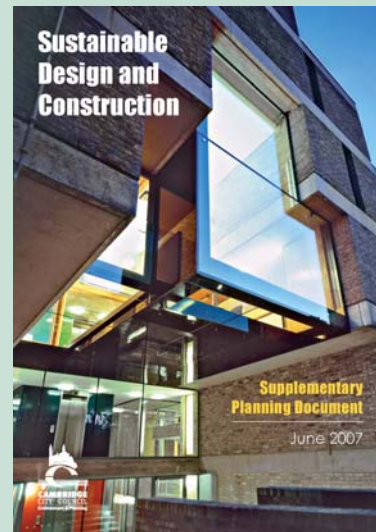
Mitigation

Adaptation



Finding balances

Historic Environment  
and Climate Change event  
24 June 7pm The Guildhall

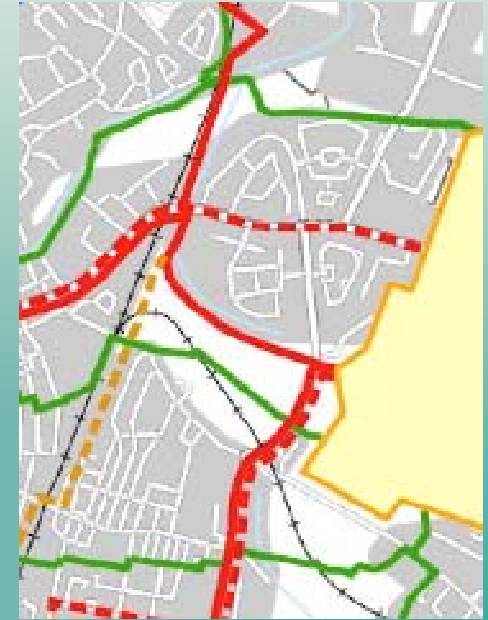


Officer meeting 25 September



# Growth Impacts - Linkages

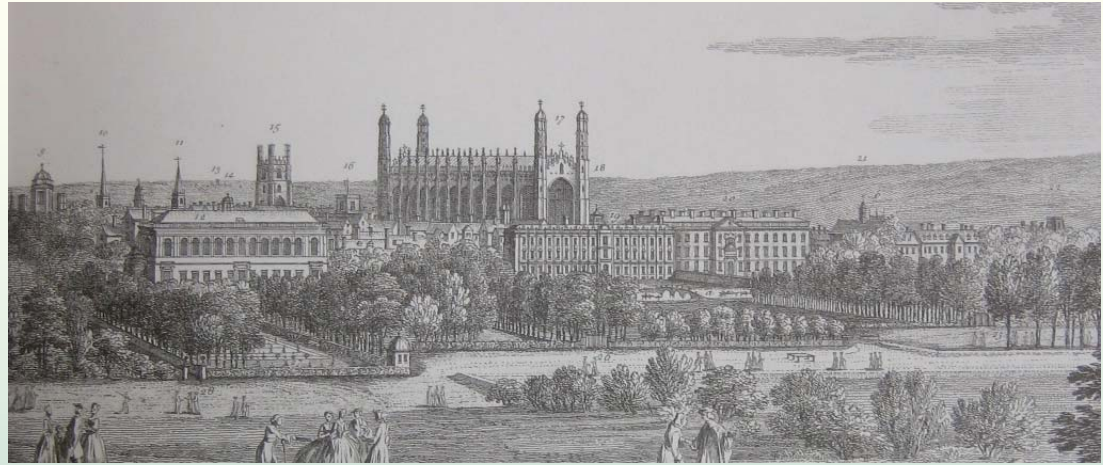
- Linkages from Growth areas to Centre
- Historic Environment impacts of strategic proposals
- Cambridge East Transport Proposals
- Impacts on Leper Chapel & Stourbridge Common





# The Changing Skyline

- settings of historic buildings
- impacts of tall buildings
- bulk of new buildings
- rooftop plant
- importance of mature trees



# Public Realm, Access and Traffic

- street capacity
- pavement capacity
- bus stops
- level access to shops
- reasonable alterations?





# Managing Change

- CAA Charrette
- Looked at the links between growth areas and the centre
- Making good past mistakes?



# Developing national policy

## World Class Places CLG and DCMS, May 2009

The Government's strategy for improving quality of place

## Heritage Protection Bill

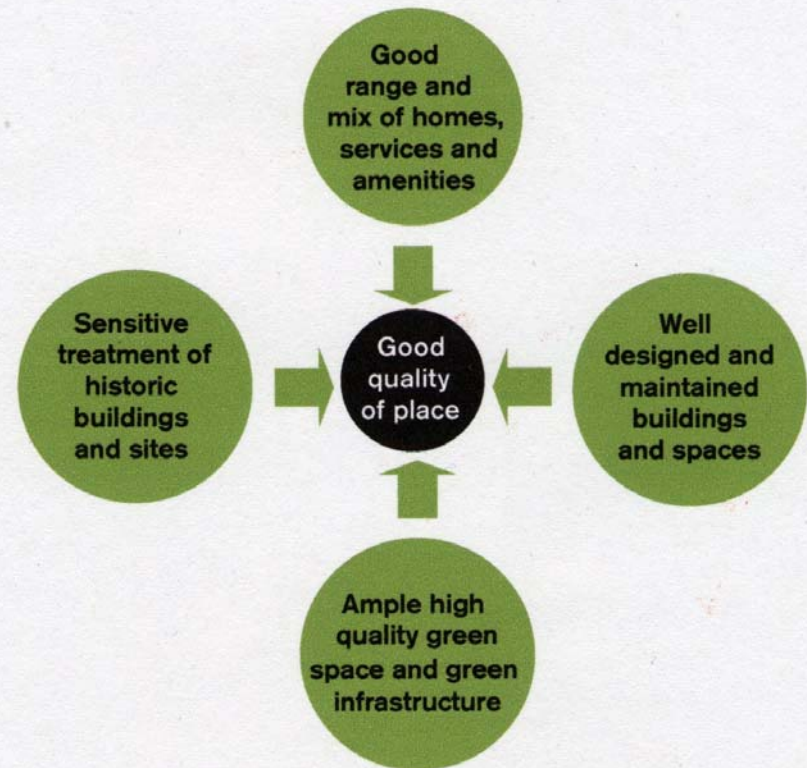
Dropped from Queen's Speech 12/08

## Draft PPS15

Current consultation

Government Statement  
on Historic Environment  
awaited

High quality places – the four elements of quality of place



# **Draft Planning Policy Statement 15**

**All types of heritage in a single document:**

**“Historic environment:**

**All aspects of the environment resulting from the interaction between people and places through time, including all surviving physical remains of past human activity, whether visible, buried or submerged, and deliberately planted or managed flora. Those elements of the historic environment that have significance are called heritage assets.”**

---

# **Draft Planning Policy Statement 15**

**Consultation until 30 October 2009**

**Combines PPGs 15 and 16**

**High-level policy (RSS) + local policy guidance**

**Supporting practice guidance**

**Holistic definition of Historic Environment**

**- buildings, landscapes, trees**

**Planning only, not other legislation**

---



# Draft Planning Policy Statement 15

- Briefing note to Councillors
- To be considered by Development Plan Steering Group
- Public responses invited
- [http://www.communities.gov.uk/documents/planningand building/pdf/consultationhistoricpps.pdf](http://www.communities.gov.uk/documents/planningandbuilding/pdf/consultationhistoricpps.pdf)

**John Preston, Historic Environment Manager, Cambridge City Council**  
**01223 457160    [john.preston@cambridge.gov.uk](mailto:john.preston@cambridge.gov.uk)**

---