

Report by: Head of Policy and Projects

To: South Area Committee 28 August 2008

Wards: Trumpington, Queen Edith's, Cherry Hinton

Environmental Improvements Schemes

1 DECISIONS TO BE MADE

Chalfont Close additional parking area

Decision: *to approve public consultation.*

Sedley Taylor/Luard Road potential traffic calming

Decision: *to approve costs for topographical survey of £1,500.*

To approve costs for mobility crossings at:

- *Nightingale Avenue /Hills Road two mobility crossings.*
- *Harvey Road two mobility crossings.*
- *Exit of car park to Colville Road – two crossing points*
- *Mill End Road/Forest Road two mobility crossings.*
- *Mill End Road/Desmond Avenue two mobility crossings.*
- *Mill End Road two mobility crossings.*

Decision: *to approve a combined estimated costs of £11,110.*

Environmental Improvement Projects priority

Decision: *Approve EI programme to end November and prioritise EI schemes.*

Potential new schemes

Hanging baskets (summer 2009) - Cherry Hinton High Street

Decision: *to approve costs for load testing lamp posts of £1,120.*

2 BUDGET

SOUTH AREA COMMITTEE - ENVIRONMENTAL IMPROVEMENT PROJECTS 2008/2009		
	£	£
Budget for 2008/2009 financial year	£87,600	
Add roll-over from 2007/2008 budget	£146,620	
TOTAL BUDGET FOR 2007/2008 FINANCIAL YEAR		£234,220
Minus Actual 08/09 Budget Spend to end July 2008		-£18,557
1. Committed Projects	Estimated Reserved Cost £	
Coronation Street traffic calming (remaining expenditure)	£4,645	
Queen Edith's Way verge seeding	£1,400	
Foster Road allotments (remaining expenditure)	£767	
Orchard Estate Pinch Point Removal	£800	
Minus Committed project budgets		-£7,612
BALANCE OF 08/09 BUDGET as at end July 2008		£208,051
2. Projects agreed by Cttee to be investigated, but no budget committed. Costs shown are estimated and will depend on detailed design and site investigation	Estimated Cost £	
Gladstone Way barriers	£3,000	
Church End parking verge	£30,000	
Walkway from Bishops Court to Hauxton Rd Lighting	£25,000	
Chalfont Close parking	£30,000	
Sedley Taylor/Luard Road traffic calming	£75,000	
Estimated costs for projects under investigation	£163,000	
N.B. The estimated costs shown above are merely given as a rough guide until the projects can be designed and costed.		

3 APPROVED SCHEMES – PROGRESS

3.1 Foster Road Allotments

All works have been completed apart from a small amount of herbaceous planting which will be carried out in the autumn.

3.2 Church End Parking area

The trial pits to precisely locate utilities are being carried out this week. Once the extent of the existing utilities are known the designs can be drawn up and approval in principle can be sought from County Highways. The scheme could then go to public consultation.

3.3 Lighting to Walkway from Bishop's Court to Hauxton Ro

Request for lighting along an unadopted walkway used to access Trumpington P&R and Waitrose from Bishop's Court. Officers are investigating responsibility for ongoing maintenance and revenue costs for the lighting as well as a formal liability agreement with the private landowner.

It has been established that S106 monies are not available for this scheme. We are therefore progressing this project as an EIP funded scheme.

3.4 Queen Edith's Way Grass Verges

To re-instate the grass verges along Queen Edith's Way from Wulfstan Way to the roundabout with Mowbray Road and Fendon Road. This scheme has been postponed due to ongoing adjacent building works continually damaging the verge. Re-seeding therefore, will be carried out in the autumn when the building is complete.

3.5 Pinch Points

Proposed pinch points to be removed are as follows:
Orchard Estate – Cycle Officers are being re-consulted to ensure proposals acceptable following a query from a local resident. Construction anticipated in October/November.

4 SCHEMES REQUIRING DECISIONS

4.1 Additional parking in Chalfont Close

The designs for this scheme have been approved by County Highways. The design will be circulated shortly for comment and

then could go to public consultation (Appendix 1). The anticipated estimated cost for Chalfont Close is £24,500.

If Committee accepts the proposals, Officers would like to carry out public consultation as soon as possible.

The results of the public consultation could be reported to Committee at 23 October meeting and if favourable, would like to ask Committee to approve proposals and budget estimate and would anticipate programming works in for the end of November.

Recommendation: *Committee to authorise public consultation as soon as possible.*

Decision: *to authorise public consultation.*

4.2 Sedley Taylor/Luard Road potential traffic calming

Following the Scoping Workshop on 7 May 2008 potential solutions are being discussed with County Highways. If County Highways indicate their approval in principal to the draft proposals, a topographic survey is required for the junction with Long Road in order to draw up more detailed proposals. A quote has been obtained and Committee are asked to fund the survey. A draft proposal is due to come before committee in December 2008.

Recommendation: *Committee are recommended to approve costs for topographical survey.*

Decision: *to approve costs for topographical survey of £1,500.*

4.3 Mobility Crossings

- **Confirmation** that Nightingale Avenue (recreation ground) two mobility crossings will constructed w/c 8 September. A budget of £2,949 has been approved by Committee.
- **Confirmation** that Ventress Farm Court (2nd crossing) will be constructed w/c 26 August. A budget of £636 has been approved by Committee.

Mobility crossings to be approved:

- Nightingale Avenue /Hills Road two mobility crossings.
Estimated Cost - £1,550.

- Harvey Road two mobility crossings.
Estimated Cost - £1,880.
- Exit of car park to Colville Road – two crossing points to ease disabled exit from car park
Estimated Cost - £1,900
- Mill End Road/Forest Road two mobility crossings.
Estimated Cost - £1,800..
- Mill End Road/Desmond Avenue two mobility crossings.
Estimated Cost - £1,990.
- Mill End Road two mobility crossings.
Estimated Cost - £1,990.

Recommendation: Committee are recommended to approve costs for mobility crossings.

Decision: to approve costs for mobility crossings to the value of £11,110.

4.4 Environmental Improvement Projects priority

As part of an initiative to speed up the delivery of the EIP, officers have agreed with the contractor a programme of works covering the period up to the end of November (see appendix). We are now considering the ongoing programme for the period December 2008 to the end of April 2009.

Recommendation 1: Officers recommend that Committee accept the EI programme of implementation as shown in the Appendix 2 to the end of November 2008.

In view of continued staff shortages, (which are being addressed urgently) Area Committees are asked to review their list of approved schemes being investigated (see below) to prioritise which schemes Committee would like Officers to concentrate on first. This will permit staff resources to be deployed to best effect.

1. Chalfont Close parking (design ready to go to consultation)
2. Church End parking verge (utilities being located, design not started)
3. Sedley Taylor/Luard Road traffic calming (concept design has been sent to County Highways)

4. Gladstone Way barriers (finding a solution that is acceptable to residents, County Highways and DDA compliant proving difficult)
5. Walkway from Bishops Court to Hauxton Rd Lighting (officers are investigating revenue funding)

Recommendation 2: *Officers recommend that Committee review their list of approved schemes.*

Decision: *Approve EI programme to end November and prioritise EI schemes.*

5 NEW SCHEMES TO BE PRIORITISED FOR 2008 / 2009

- 5.1 **Hanging baskets - Cherry Hinton High Street.** A new scheme has been suggested by Ward Councillors to fund hanging baskets for summer 2009 on lamp posts along Cherry Hinton High Street. In order for this to take place each lamp post has to be load tested to ensure it can accommodate the added weight of two number baskets. There is a total of 16 no. lamps costs from Chelwood Close to Mill End Road. The cost of load testing is £70 each making a total of £1,120.00. (For information the costs for hanging baskets in Chesterton High Street for 2008 were £4,040)
- 5.2 Officers are consulting with Streetscene to ensure they can accommodate the additional watering commitment.
- 5.3 If Committee wish to pursue this scheme, approval of the cost of load testing is sought.

Recommendation: *Committee are recommended to approve costs for load testing.*

Decision: *to approve costs for load testing lamp posts of £1,120.*

6 CONSULTATIONS

- 6.1 It is the role of this Area Committee to ensure that an appropriate level of consultation is carried out and where necessary to make decisions about what changes to make to a scheme following consultation.

7 IMPLICATIONS

(a) Financial Implications

The Environmental Improvements Programme is a rolling budget and is divided between the four Area Committees by percentage population.

A degree of flexibility can be implemented within the programme. It will be possible for Area Committees to 'save' some, or all, of their annual budget in order to accrue funds for larger projects.

(b) **Equal Opportunities Implications**

Covered as one of the assessment criteria

(c) **Environmental Implications**

The whole purpose of this programme is to bring about improvements in the environment

(d) **Community Safety Implications**

Covered as one of the assessment criteria

8 BACKGROUND PAPERS

The following are the background papers that were used in the preparation of this report:

9 INSPECTION OF PAPERS

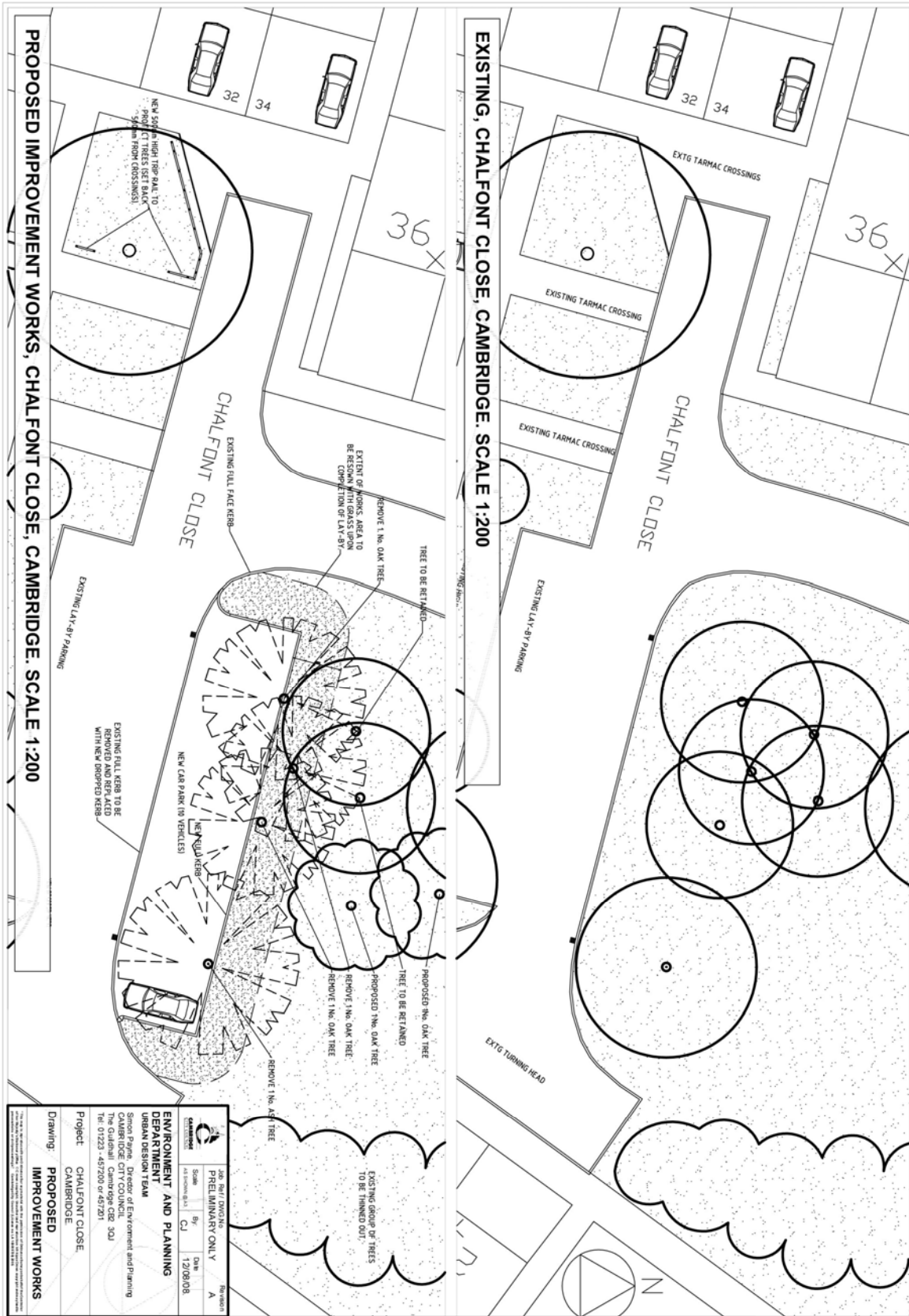
To inspect or query the background paperwork or report, please contact,

Dinah Foley Norman, Principal Landscape Architect

Telephone: 01223 - 457134

Email: Dinah.Foley-Norman@cambridge.gov.uk

APPENDIX1 : CHALFONT CLOSE (existing and proposed)



	Date and Time PRELIMINARY ONLY	Drawing A
	Scale 1:200	
Environment and Planning Department Urban Design Team Simon Payne, Director of Environment and Planning The Guildhall, Cambridge CB2 3DQ Tel: 01223 457200 or 457201	Project CHALFONT CLOSE CAMBRIDGE	Drawing PROPOSED IMPROVEMENT WORKS

APPENDIX 2 : EI PROGRAMME TO END NOVEMBER

2008/9 WEBSTERS' PROGRAMME

2007/8	M	T	W	T	F	S	S	M	T	W	T	F	S	S	M	T	W	T	F	S	S	M	T	W	T	F	S	S	M	T												
April		1	2	3	4	5	6	7	8	9	10	11	12	13	14	15	16	17	18	19	20	21	22	23	24	25	26	27	28	29	30											
May				1	2	3	4	5	6	7	8	9	10	11	12	13	14	15	16	17	18	19	20	21	22	23	24	25	26	27	28	29	30	31								
June							1	2	3	4	5	6	7	8	9	10	11	12	13	14	15	16	17	18	19	20	21	22	23	24	25	26	27	28	29	30						
July		1	2	3	4	5	6	7	8	9	10	11	12	13	14	15	16	17	18	19	20	21	22	23	24	25	26	27	28	29	30	31										
August				1	2	3	4	5	6	7	8	9	10	11	12	13	14	15	16	17	18	19	20	21	22	23	24	25	26	27	28	29	30	31								
							ABBEY RD / V. F. C1 CROSSINGS & CHURCH END TRIAL PITS							DITTON LA SHOPS							PERSE WAY CHICANE & CAMPKIN RD ISLAND																					
September	1	2	3	4	5	6	7	8	9	10	11	12	13	14	15	16	17	18	19	20	21	22	23	24	25	26	27	28	29	30												
	KINGSTON ST CYCLE PARKING							NIGHTINGALE AVE MOBILITY CROSSINGS							ELIZABETH WAY CYCLE DROPPED KERBS ETC.							COLVILLE RD MOBILITY CROSSINGS							HARVEY RD X-INGS													
October		1	2	3	4	5	6	7	8	9	10	11	12	13	14	15	16	17	18	19	20	21	22	23	24	25	26	27	28	29	30	31										
		HARVEY RD MOBILITY CROSSINGS					MILL END MOBILITY CROSSINGS							CHESTERTON ROAD DUAL-USE							GWYDIR ST CYCLE RACKS							PENNY FERRY														
November				1	2	3	4	5	6	7	8	9	10	11	12	13	14	15	16	17	18	19	20	21	22	23	24	25	26	27	28	29	30									
							PENNY FERRY							CHALFONT CL							CHALFONT CL							CHALFONT CL														
December	1	2	3	4	5	6	7	8	9	10	11	12	13	14	15	16	17	18	19	20	21	22	23	24	25	26	27	28	29	30	31											
January				1	2	3	4	5	6	7	8	9	10	11	12	13	14	15	16	17	18	19	20	21	22	23	24	25	26	27	28	29	30	31								
February							1	2	3	4	5	6	7	8	9	10	11	12	13	14	15	16	17	18	19	20	21	22	23	24	25	26	27	28								
																																			28							
March							1	2	3	4	5	6	7	8	9	10	11	12	13	14	15	16	17	18	19	20	21	22	23	24	25	26	27	28	29	30	31					

WEEKEND / BANK HOLIDAY – DARK GREY HATCHING