

NOT PROTECTIVELY MARKED

# Neighbourhood profile update Cambridge City West Neighbourhood

May 2008



**Jon Hutchinson,**  
Neighbourhood Policing  
Inspector

**Paul Griffin, Strategy Officer  
(Community Safety),  
Cambridge City Council**



Creating a safer  
Cambridgeshire

NOT PROTECTIVELY MARKED

## CONTENTS

<b>1.</b>	<b>INTRODUCTION</b>	<b>2</b>
	<b>Aim</b>	<b>2</b>
	<b>Methodology</b>	<b>2</b>
<b>2.</b>	<b>PREVIOUS PRIORITIES &amp; ENGAGEMENT ACTIVITY</b>	<b>3</b>
	<b>Previous Priorities</b>	<b>3</b>
<b>3.</b>	<b>EMERGING ISSUES</b>	<b>6</b>
<b>4.</b>	<b>RECOMMENDATIONS</b>	<b>8</b>
<b>5.</b>	<b>CURRENT CRIME AND INCIDENT LEVELS</b>	<b>10</b>

### 1. Introduction

#### **Aim**

The aim of the Neighbourhood profile update is to provide an overview of action taken since the last reporting period, identify ongoing and emerging crime and disorder issues, and provide recommendations for future priorities and activity in order to facilitate effective policing and partnership working in the area.

The document should be used to inform multi-agency neighbourhood panel meetings and neighbourhood policing teams, so that issues can be identified, effectively prioritised and partnership problem solving activity undertaken.

#### **Methodology**

This document was produced using the following data sources:

- Crime and Incident data, from January 08 – March 08 and as a comparison data from October 07 – December 07 and January 07 – March 07.
- Information from the Neighbourhood Policing teams, May 08
- Cambridge City Council, City Services data, January – March 08

## 2. Previous Priorities & Engagement Activity

### Previous Priorities

*At the neighbourhood panel meeting on 7<sup>th</sup> February 2008, the following issues were adopted as priorities. The tables below summarise action taken and the current situation regarding the priorities which were set:*

<b>1. Shed Burglaries in the Castle Ward, specifically in the Windsor Rd/Oxford Rd area</b>	
<b>Objective</b>	To reduce the levels of shed burglaries by increasing local awareness of the problem and providing crime prevention advice to those at risk.
<b>Action Taken</b>	<p>On 14<sup>th</sup> February a community safety event was held at St Augustine's Church on Richmond Rd, where representatives from the Police, Fire Service, City Council and Neighbourhood Watch were able to promote the need to lock sheds and to pass information to the police. This event was generously supported by Ridegeons, who provided a number of locks, free of charge. Feedback from local residents and councillors was that this was an extremely worthwhile exercise. Indeed, other areas of the City are looking to replicate this event in their wards.</p> <p>A significant amount of follow up crime prevention work was undertaken in the area with the local PCSO and City Rangers identifying potential victims. Neighbourhood Watch were able to assist with suggesting potential vulnerable residents and support was prioritised to those living alone.</p>
<b>Current Situation</b>	There has been a reduction in burglaries of sheds, and this area is now no longer a hotspot.
<b>Continue or Discharge?</b>	Discharge

<b>2. Crime and anti-social behaviour at Lammas Land, Newnham</b>	
<b>Objective</b>	To reduce the levels of crime and anti-social behaviour in Lammas Land, specifically at the toilets, where vandals have been damaging the facilities.
<b>Action Taken</b>	A successful bid for £9,000 was made to the City Community Safety Partnership to tackle this issue. This money enabled four permanent CCTV cameras to be purchased, covering the toilets, park and paddling pool. These cameras have been an excellent visual deterrent, and since they were set up, there have been no further incidents of damage reported.

	The Neighbourhood Policing Team has increased its patrols of the area on Friday and Saturday nights, specifically targeting groups of under age drinkers. Very few groups have been encountered, with the current trend appearing to be for young people to use the green spaces in the South of the City.
<b>Current Situation</b>	A resounding success, however, it is important that the Police maintain regular patrols of the area over the summer months.
<b>Continue or Discharge?</b>	Discharge

### **3. Violent crime and Anti-Social Behaviour in the Market ward associated with the night time economy**

<b>Objective</b>	To reduce the levels of crime and anti-social behaviour by taking a robust enforcement approach in combination with improved working between agencies and the licensed trade.
<b>Action Taken</b>	<p>The City Council's CCTV Team have been instrumental in convicting those involved in violence and have won a national award. This is great evidence of the professionalism of the team and reflects the close working relationship that exists with the CCTV Team, police and licensees.</p> <p>The Cambridge Business Against Crime radio system has continued to flourish with over 120 businesses now working on the system, allowing pubs, clubs and retailers to warn others about potentially volatile groups or individuals. This system is operated through the CCTV control room.</p> <p>The Police ran a pro-active operation taking a tough stance against lower level disorderly behaviour by issuing £80 Fixed Penalty tickets for those shouting and swearing, smashing bottles, and urinating in shop doorways. 210 of these tickets were issued over the reporting period. New powers to direct individuals to leave the City Centre were used on a daily basis. The Police have changed their shift pattern to increase the number of officers on duty on Friday and Saturday nights by 50%. This has allowed increased foot patrols of the City Centre.</p> <p>It is anticipated that a Community Alcohol Project is to be introduced in the City following a successful trial in St Neots. This will involve close co-operation with the Police, Trading Standards, and Licensees to tackle under age drinking in public areas. The aim of this scheme is to target unscrupulous licences that sell alcohol to children as well as providing increased activities for young people to divert them from drinking on green spaces.</p>

	A Cumulative Impact Area licensing policy has been introduced by the City Council for the City Centre. This means that any licensing application needs to prove that it will not contribute to increased levels of crime and disorder. Since this policy was introduced there have been fewer applications for new premises and fewer applications to increase licensing hours at premises.
<b>Current Situation</b>	Violent crime remains high and further activity is required to counter this over the summer months. Analysis suggests that violent crime will increase over the summer months, with people loitering on the streets after they have left pubs and clubs as well as on the green areas.
<b>Continue or Discharge?</b>	<b>Continue</b>

### Engagement Activity

The West Neighbourhood Policing Team is committed to engaging with the community. This has helped assess the “feeling on the ground” and allowed the Team to focus on areas that are of concern to local residents. Key Individuals across the Neighbourhood have been identified and they have been visited and asked for their views and advice on a monthly basis. These people include: Councillors, University/Colleges, CAMBAC, Religious Leaders, Neighbourhood Watch Co-Ordinators, Youth Workers, City Centre Management and Head Teachers.

E-cops messages have been sent on a weekly basis and information has been received through this mechanism that has helped focus patrolling.

Personal visits have been carried out to every victim of burglary and ensure everyone who has suffered from theft from their vehicle is contacted by the local team.

The Violent Crime Task Group exists to look at the long term issues surrounding alcohol related crime and this will continue to be the driving force behind tackling this form of criminality.

Feedback has been received from a number of residents about what they would like to see as priorities. The recurring themes are concerns about underage drinking on green spaces, aggressive punt touting, and anti social use of vehicles and (a minority of) cyclists who flout traffic regulations by riding through red lights, the wrong way along one way streets, and on the footpath. Ongoing work between the City Council’s Anti-Social Behaviour Team and the Cambridge Cycling Campaign is looking at measures to tackle these issues.

## Emerging Issues

### Neighbourhood trends

Total crime in the neighbourhood has increased compared to the same 3 month period last year. Levels of crime have however remained similar to the previous period. The increase in crime has occurred in violent crime, theft from vehicles, theft from shops and other crimes. The increase in violent crime has been experienced in Market ward. Levels of ASB have decreased from the previous period but have remained at a similar volume to the same period last year.

#### Newnham

- Levels of crime in Newnham ward have remained stable over the period.
- Theft from motor vehicle offences have continued to increase during this period. <sup>1</sup> January and February saw similar levels each month with offences reducing in March. The following were repeat locations – Barton Road (4 offences), Herschel Road (4 offences), Grange Road (3 offences) and Grantchester Meadows (3 offences).
- Incidents of anti-social behaviour have decreased slightly over the period with only 29 reported incidents and no hotspot locations.
- There were 12 reports of fly tipping in the ward over the period. On 7 occasions the fly tip was removed within 24 hours but there was insufficient evidence to take enforcement action and 3 warning letters were sent. A repeat location <sup>2</sup> for fly tipping was Lammas Land.
- There were 9 abandoned vehicles reported. All of these were either claimed, not on site at the time of inspection and one vehicle was removed and stored in a compound.

#### Castle

- Total crime has decreased in Castle ward over the period.
- The majority of the reduction since the last period occurred in a decrease in cycle theft and criminal damage offences.
- Anti-social behaviour has decreased from both the last period and the same 3 month period in 2007 to only 29 reported incidents.

---

<sup>1</sup> From 19 - Jan 07- March 07 to 32 - Jan 08 - March 08

<sup>2</sup> Greater than 3 occurrences

- There were 5 reports of fly tipping in the ward over the period. On 4 occasions the fly tip was removed within 24 hours but there was insufficient evidence to take enforcement action and a further incident is pending further investigation. No repeat locations for fly tipping recorded.
- There were 9 abandoned vehicles reported. All of these were either claimed, or not on site on inspection or found not abandoned on inspection.

## Market

- Total crime has increased over the period compared to the previous period.
- Increases have occurred in violent crime, theft from vehicles, theft from shops and other crime offences. 31% of shoplifting occurred in two city centre shops. The theft from vehicles show no geographical trends however satellite navigation systems were stolen in 18/26 thefts.
- The greatest increase compared to the previous period has been experienced in violent crime offences. The majority of the increase occurred in the level of 'Section 5 (harassment, alarm and distress) offences' in the period, particularly in March as illustrated in the table below.

Month	2007	2008
January	10	10
February	11	38
March	10	86
Total	31	134

This is as a result of **pro-active policing** aimed at tackling anti-social behaviour in the ward. Officers have targeted offenders responsible for anti-social behaviour linked to the night time economy, such as swearing and being verbally abusive and urinating in public and have issued them with fixed penalty notices (these are recorded as violent crime offences). Areas targeted include St Andrews Street, Sidney Street, Market Square and Lion Yard. Levels of other violent crime types have either decreased or remained stable in this period compared to the same period in 2007.

- There have been reductions in cycle theft compared to the previous period (from 183 to 109 offences).

- Levels of anti-social behaviour have decreased from the last period to similar levels previously experienced in the same 3 month period in 2007. In the period 29% of the ward's anti-social behaviour incidents have occurred in the following streets – Lion Yard, Sidney Street, St Andrews St and Regent Street. 27% of the incidents in the ward were tagged as alcohol related (121 incidents).
- There were 131 reports of fly tipping in the ward over the period. On 109 occasions the fly tip was removed within 24 hours but there was insufficient evidence to take enforcement action and in a further 5 incidents warning letters were sent. Repeat locations were Kings Parade, Market Square, Market Street, Corn Exchange Street, Regent Street, Eden Street and Silver Street.<sup>3</sup>
- There were no abandoned vehicles reported however the ward has the worst problem with derelict cycles with 246 being recovered by the council in the period. Repeat locations<sup>4</sup> for derelict cycles in the ward are Drummer Street, St Andrews Street and Sidney Street.
- The below table details anti-social cycling offences in the ward for February and March. The most common locations for both months were Market Street, Sidney Street, Trinity Street and Bridge Street.

Offence ► Month ▼	Cycling in a time restricted area	Cycling in a prohibited area	Cycling the wrong way down a one way street	Cycling on the pavement	<b>Total</b>
February	12	15	229	0	<b>256</b>
March	16	18	259	3	<b>296</b>

- The City Council and Cambridgeshire Police have been working together for the past year on punting related issues. From Monday 12th May 2008 the City Council will be taking enforcement action on grounds of trespass against any commercial punt operator working from Council owned land without its consent.

<sup>3</sup> Greater than 3 occurrences

<sup>4</sup> Greater than 15 reports



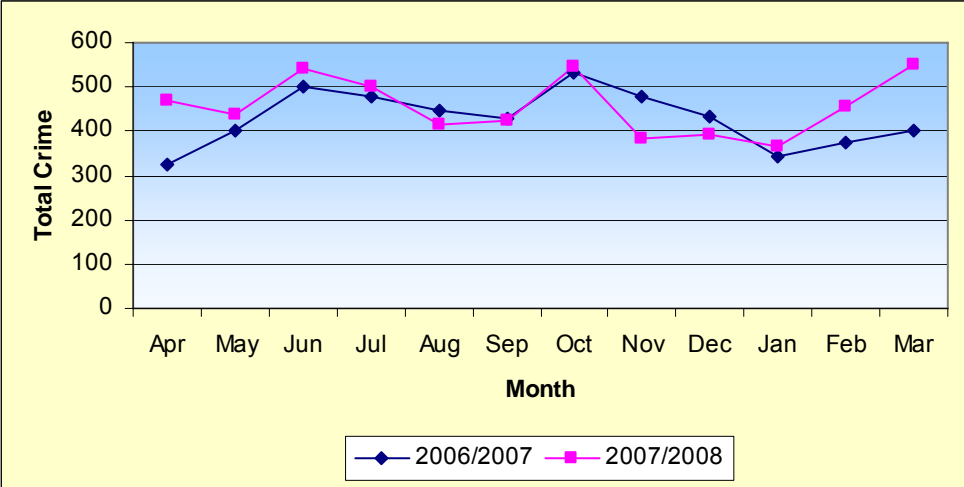
- A number of Independent Operators have signed up to and will be working from the La Mimosa Landing Stage off Thompson's Lane during the summer. These operators will pay fees and will be bound by an agreement and a code of conduct which restricts the number and location of punt touts working for them or on their behalf.

### **Recommendations**

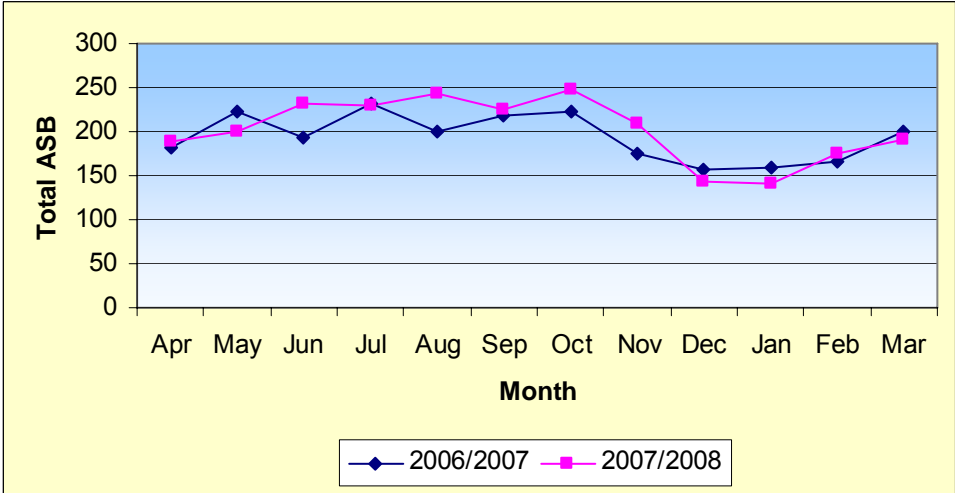
- Violent crime within the city centre to remain a priority.
- Partnership to improve signage and investigate ways of tackling cycling the wrong way in the city centre.
- Community safety messages to be circulated re leaving satellite navigation systems in vehicles.

### 3. Current Crime and Incident Levels

#### Total Crime



#### Total ASB



### Current Crime and Incident Levels in Neighbourhood, by Ward

			Dwell. Burg.	Other Burg.	Violent Crime	Robbery	Theft of Vehicle	Theft from Veh.	Cycle Theft	Theft from Shop	Criminal Damage	Other Crime	<b>TOTAL CRIME</b>	Domestic Violence	<b>TOTAL ASB</b>
Nhod	City West	Jan 08 – Mar 08	21	45	264	10	11	70	171	249	88	442	<b>1371</b>	23	<b>505</b>
		Oct 07 – Dec 07	28	26	220	19	20	44	278	212	107	368	<b>1322</b>	27	<b>601</b>
		Jan 07 – Mar 07	23	62	188	3	12	41	205	162	75	345	<b>1116</b>	21	<b>525</b>
Wards	Newnh am	Jan 08 – Mar 08	6	10	5	0	4	32	29	4	8	34	<b>132</b>	2	<b>29</b>
		Oct 07 – Dec 07	3	3	11	4	6	21	32	1	6	26	<b>113</b>	0	<b>35</b>
		Jan 07 – Mar 07	3	25	5	0	4	19	18	0	8	45	<b>127</b>	4	<b>40</b>

NOT PROTECTIVELY MARKED

<b>Castle</b>	<i>Jan 08 – Mar 08</i>	6	9	8	0	3	12	33	0	19	39	<b>129</b>	7	<b>29</b>
	<i>Oct 07 – Dec 07</i>	14	6	12	0	5	10	63	0	31	22	<b>163</b>	11	<b>38</b>
	<i>Jan 07 – Mar 07</i>	14	12	14	0	0	8	44	1	16	29	<b>138</b>	7	<b>43</b>
<b>Market</b>	<i>Jan 08 – Mar 08</i>	9	26	251	10	4	26	109	245	61	369	<b>1110</b>	14	<b>447</b>
	<i>Oct 07 – Dec 07</i>	11	17	197	15	9	13	183	211	70	320	<b>1046</b>	16	<b>528</b>
	<i>Jan 07 – Mar 07</i>	6	25	169	3	8	14	143	161	51	271	<b>851</b>	10	<b>442</b>

NOT PROTECTIVELY MARKED