

# Neighbourhood Profile Update Cambridge City South Neighbourhood

December 2008



**Steve Kerridge,**  
Neighbourhood Policing  
Inspector

**Paul Griffin, Strategy Officer  
(Community Safety),  
Cambridge City Council**



## CONTENTS

<b>1. INTRODUCTION</b>	<b>2</b>
<b>Aim</b>	<b>2</b>
<b>Methodology</b>	<b>2</b>
<b>2. PREVIOUS PRIORITIES &amp; ENGAGEMENT ACTIVITY</b>	<b>3</b>
<b>Previous Priorities</b>	<b>3</b>
<b>3. EMERGING ISSUES</b>	<b>4</b>
<b>4. RECOMMENDATIONS</b>	<b>8</b>
<b>5. CURRENT CRIME AND INCIDENT LEVELS</b>	<b>9</b>

### 1. Introduction

#### **Aim**

The aim of the Neighbourhood profile update is to provide an overview of action taken since the last reporting period, identify ongoing and emerging crime and disorder issues, and provide recommendations for future priorities and activity in order to facilitate effective policing and partnership working in the area.

The document should be used to inform Area Committees, multi-agency Neighbourhood Action Groups and Neighbourhood Policing Teams, so that issues can be identified, effectively prioritised and partnership problem solving activity undertaken.

#### **Methodology**

This document was produced using the following data sources:

- Crime and Incident data, from August 08 – November 08 and as a comparison data from August 07 – November 07 and April 08 – July 08<sup>1</sup>.
- Information from the Neighbourhood Policing teams, December 08
- Cambridge City Council, City Services data, August – November 08

---

<sup>1</sup> Please Note: The ASB figures for the months between August and November 2008 were obtained through our own data on i2 Workstation, due to problems encountered at Corporate Performance and may not represent the official figures released to the Home Office.

## 2. Previous Priorities & Engagement Activity

### Previous Priorities

At the Area Committee meeting on 28<sup>th</sup> August 2008, the following issues were adopted as priorities. The tables below summarise action taken and the current situation regarding the priorities which were set:

<b>Non-Dwelling Burglary – South Neighbourhood</b>	
<b>Objective</b>	<b>To seek to reduce offences of non-dwelling burglary and maximise opportunities for detection.</b>
<b>Action Taken</b>	<ul style="list-style-type: none"> <li>• “Target-hardening” - security advice to local schools and businesses to seek to deter offenders and protect premises.</li> <li>• High visibility patrols across the neighbourhood in key hotspot areas to offer reassurance and seek to disrupt and identify offenders.</li> <li>• Robust use of stop search to challenge suspicious behaviour</li> <li>• Recovery of forensic evidence to increase identification of suspects.</li> </ul> <p>During the period there were 18 non-dwelling burglaries recorded across the South neighbourhood. Of those, 10 crimes are held pending further identification of investigative leads, 6 resulted in the arrest of the suspects and 2 are still on-going enquiries.</p> <p>During the same period in 2007 there were also 18 offences.</p> <p>One local Persistent and Priority Offender was prosecuted for one of the offences occurring in this area after some focused work seeking to disrupt his activities and take positive enforcement action.</p>
<b>Current Situation</b>	There have been no offences in December to date at the time of writing There are currently no obvious dwelling or non-dwelling burglary patterns offending in the South neighbourhood.
<b>Continue or Discharge?</b>	Consider discharge

<b>Neighbourhood Watch Engagement</b>	
<b>Objective</b>	<b>Increase effective engagement with Neighbourhood Watch (NHW).</b>
<b>Action Taken</b>	<ul style="list-style-type: none"> <li>• Work has been completed to ensure that all records and contact details of active members are up-to-date to facilitate easy communication.</li> <li>• The issue of a monthly newsletter has been well-received as a regular update on matters of note.</li> <li>• The circulation of materials has been increased to include other interested parties within local communities.</li> <li>• Officer awareness regarding the benefits of local NHW and specific</li> </ul>

	<p>local groups has been increased through additional training for Police Community Support Officers (PCSO).</p> <ul style="list-style-type: none"> <li>• Specific advice was passed during Halloween and Bonfire Night specifically; the latter's success being reliant on community intelligence.</li> <li>• Very low levels of Anti Social Behaviour (ASB) were reported this year.</li> </ul>
<b>Current Situation</b>	<p>The South neighbourhood approach to NHW liaison has been commended during this period by Senior Police Managers. The lessons learnt from work in response to this priority are currently being reviewed in detail to ensure similar levels of Police / NHW engagement and trust across the City as a whole.</p>
<b>Continue or Discharge?</b>	<p>Please see recommendation concerning burglary prevention to which NHW would contribute to significantly.</p>

### Engagement Activity

- Considerable joint work has been conducted across the neighbourhood with the Fire and Rescue Service, Cambridge County Council, Addenbrookes Hospital, Cambridge City Council - City Homes, City Rangers, Safer Communities and other Housing organisations.
- In response to ASB problems in the vicinity of Rectory Terrace, Cherry Hinton, Tesco Stores have also been worked with closely.
- Multi-agency Actions include:
  - "It's a knock out"
  - Hills Road Bridge enforcement work - motor vehicle and pedal cycle focused
  - "Sort Your Lights Out" – education campaign at Long Road 6<sup>th</sup> form College
  - Halloween ASB campaign and patrols
  - Bonfire night patrols
  - Immobilise and e-cops introduced at schools
  - NPT Laptops for Immobilise and e-cops registration events
  - Allotment.net contacted and security advice provided in view of Shed burglaries.

## Emerging Issues

### Neighbourhood trends

An increase in total crime and disorder was seen across City South during the 4 month period. This was due to increases predominantly in burglary offences, violent crime (mainly alcohol-related), vehicle offences and theft of pedal cycle offences seen across all 3 wards. Comparatively, offence levels recorded in the same period last year were much lower.

Anti-social behaviour incidents (ASB) have also increased during the period, however, this was mainly observed in Trumpington ward. Further investigation, reveals that, like the violent offences, this is likely to be related to night time economy/alcohol<sup>2</sup>.

### Trumpington

- Total crime and ASB has increased in Trumpington ward over the 4 month period. This is likely to be due to a seasonal trend in the months leading up to Christmas.
- During the current 4 month period, dwelling burglaries have doubled from 8 offences in the previous period to 16. Twelve of these occurred during September (6 offences) and October (6). The offences were relatively spread out across the ward with offender(s) preferring to enter the properties via the rear.
- Non-dwelling burglaries are relatively consistent with the previous period but are comparatively higher than the same period last year. In contrast to the dwelling burglaries the majority of these were committed in August (6) and November (5). However no further trends can be ascertained.
- During the period, 2 personal robberies occurred in August (on different nights). In these offences 2 offenders were approaching people on Gonville Place and Gresham Road and robbing them of their possessions. The offenders for 1 of these offences were arrested and charged. This was likely to be part of the series identified in this area in the previous Profile Update.
- Violent offences have fallen compared to the previous period, but are at a higher level than that recorded for the same time period last year<sup>2</sup>. The monthly distribution of these offences indicate that the majority of offences occurred in August (24) whereas only 6 were reported during September (October – 15 and November – 10). The majority of the offences appear to be related to alcohol/night time economy and were situated mainly to the north of the ward (Gonville Place area and roads branching off Hills Road).
- ASB incidents have increased from 119 in the previous period to 196 reported in the current 4 month period. This is likely to coincide with the trend seen in violent offences as many of the incidents appear to be alcohol related<sup>2</sup>. Furthermore, the monthly distribution of incidents shows a similar trend to violent offences (August – 63, September – 43, October – 47 and November – 43). This is also seen in the geographical spread of the incidents. Gonville Place reported the highest number of incidents in the ward with 34, followed by Harvey Road (15) and Hills Road (14).

---

<sup>2</sup> The notes in the crimes/incidents contained the words “drink”, “drunk” and “alcohol”.

- Between August and November there were nine reports of abandoned vehicles in the ward. This included five, which were later claimed by their owners, two, which were not on site following inspection and one, which was removed and taken to a compound.
- Between August and November there were 34 reports of fly tipping in the ward. All were removed within 24 hours, but there was insufficient evidence to take enforcement action. Princess Court (6) and Russell Court (4) were the hotspots during this period.
- 27 derelict cycles were dealt with between August and November. Hanover Court (8) was a hotspot during this period.
- Three items of graffiti were removed between August and November and two cases of vagrancy were referred to 'streetlife' outreach workers.

### **Cherry Hinton**

- Total crime in Cherry Hinton has increased during the period. This is likely to be attributed to a seasonal trend in the months leading up to Christmas and this is represented in the monthly distribution of the offences (August – 39 offences, September – 35, October – 59, and November - 47).
- Dwelling burglary offences have remained relatively consistent with the previous period, with 9 and 7 offences reported respectively. Note that in the same 4 month period last year, 12 offences were reported. The offences this year were all relatively spread out across the ward with offender(s) preferring to enter properties via the rear. An offender was arrested for 1 of these offences and was subsequently charged. In addition, 1 of these offences was a distraction burglary in which a male offender was passing himself off as a salesman to keep the victim busy whilst another male entered the property from the rear.
- Non-dwelling burglaries in Cherry Hinton have also remained stable but are comparatively higher than the same time period last year. This is due to 4 offences which occurred on the same night in November in which unknown offender(s) targeted sheds on the Blackland Allotment site on Daws Lane. In 3 of these offences, nothing was stolen. However a lawn mower was stolen in the remaining offence. In addition, 2 business premises were targeted on 10/11/2008 on Rectory Terrace, where money and cigarettes were stolen. These offences were likely to have occurred between 00:00hrs and 01:00hrs.
- During the period there were 3 robbery offences, one robbery of a public house in September and 2 personal robberies which occurred on the same night in November. There is currently a suspect for these offences.
- Theft of vehicle offences in Cherry Hinton has increased to 12 offences during the period compared to 3 and 7 in the previous period and same period last year respectively. This was mainly due to a series of moped/motorcycle thefts over October and November. In 9 out of 12 offences, mopeds/motorcycles were targeted. These were split between the Colville estate and properties on roads opposite Cherry Hinton Hall.

- ASB incidents in Cherry Hinton have fallen to 148 compared to 206 incidents reported the previous period. High Street and Rectory Terrace reported the highest level of incidents (25) followed by Cherry Hinton Road (16). The majority of these incidents were related to congregations of youths, causing trouble, being abusive and a general nuisance.
- Between August and November there were 10 reports of abandoned vehicles in the ward. This included five, which were not on site following inspection and two, which were later claimed by their owners.
- Between August and November there were 35 reports of fly tipping in the ward. All were removed within 24 hours and two cases resulted in formal warning letters being sent to domestic offenders. Waste transfer documentation was also requested from one trade offender. Bliss Way (8), Colville Road (5) and Fulbourn Road (5) were the hotspots during this period.
- 20 derelict cycles were dealt with between August and November. Ainsdale (8) and Cherry Hinton Road (4) were the hotspots during this period.

### **Queen Ediths**

- Queen Edith has seen an increase in the number of offences when compared to both the previous period and the same period last year. Increases in burglary offences (both dwelling and non-dwelling), violent offences, robbery, vehicle offences and cycle theft contributed to this overall increase.
- Dwelling burglary offences have doubled to 22 offences compared to the same 4 month period last year (11 offences). This was due to a series of burglaries identified over the months of September and October. These offences all displayed a specific means of entry where the offender used items available in the gardens to smash rear windows/doors (i.e. rocks and garden tools). Incidentally, the offender in these offences was arrested for 1 of the offences and has subsequently admitted to and been charged for 9 more.
- Non-dwelling burglary offences are relatively stable against the previous period. However, this is still comparatively higher than the same time period last year. There may be an emerging trend where in 9 offences offender(s) have targeted schools and colleges across the ward.
- Violent offences are also relatively consistent with the previous period but higher than the same time period last year. The majority of the offences occurred on Hills Road accounting for 13 offences. Six of these offences occurred at Addenbrookes Hospital (between August and September) and relate to patients being aggressive towards nurses.
- There were 3 personal robberies during the 4 month period, 1 occurring in August and 2 occurring in November. The robbery in August occurred on Wulfstan Way where 2 female offenders attempted to rob the victim after the victim got off a bus. Another offence consisted of an unknown offender on a moped snatching the victim's bag as they were cycling down Glebe Road. While the remaining offence consisted of the victim having their phone stolen during an altercation with several teenagers.

- Eight vehicles were stolen during the 4 month period compared to only 2 in the previous period. Offender(s) targeted mopeds/motorcycles in 5 out of 8 offences. This could be an overlap between theft of moped/motorcycle offences in Cherry Hinton. Incidentally, 3 of the 5 moped/motorcycle offences occurred on Gunhild Way (where there is a footpath leading directly to Cherry Hinton Road). In addition, 2 vans were targeted and stolen from properties on Nightingale Avenue and Blinco Grove. These offences are likely to coincide with theft from vehicle offences.
- There were 29 theft from vehicle offences during the period compared to just 12 in the previous period. The majority of these offences occurred during the months of September and October with 10 and 11 offences reported respectively. These offences were situated in 2 distinct geographical clusters which consist of vehicles parked in the residential area between Mowbray Road and Hills Road, and vehicles parked on roads branching off Queen Ediths Way. Five of these offences targeted vehicles parked at various schools across the ward during their open-day events.
- Cycle thefts in Queen Edith have followed a seasonal increase during the period with 41 cycles stolen. This correlates with the increased demand for cycles when new students come to the city in October. The highest number of offences occurred on Hills Road with 16 reported (nearly all of these offences occurred at Homerton College or at Addenbrookes Hospital). In addition, cycles at a number of schools in the area were also targeted.
- ASB incidents have remained consistent with the previous period with 154 incidents reported over the 4 month period. But this was still comparatively higher than the same period last year. The highest number of incidents originated on Hills Road, with 42 reported during the period. Nineteen of these were related to incidents at Addenbrookes Hospital. Sixteen of the remaining incidents were youths related (congregating and involved in nuisance behaviour).
- Between August and November there were 9 reports of abandoned vehicles in the ward. This included two, which were not on site following inspection, three, which were later claimed by their owners and one, which was removed and taken to a compound.
- Between August and November there were 17 reports of fly tipping in the ward. All were removed within 24 hours and one case resulted in waste transfer documentation being requested from a trade offender.
- 14 derelict cycles were also dealt with during this period.

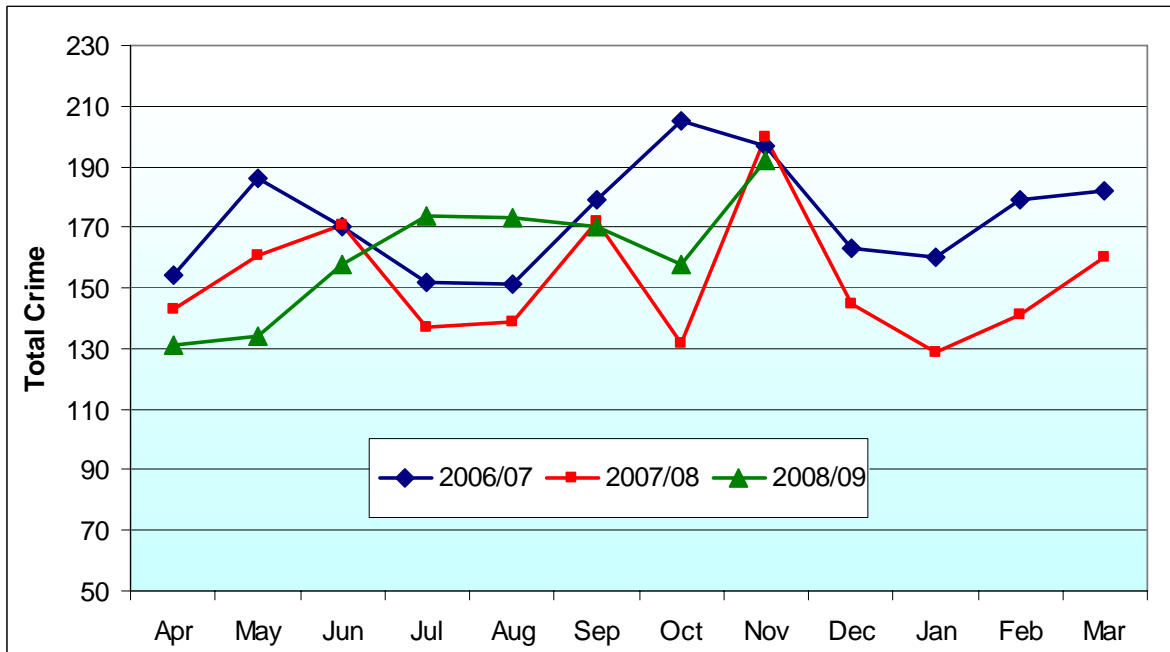
### **3. Recommendations**

- Parking issues around Schools and Junctions. A recurring problem which the City Council and the Police are often contacted about. The proposal is to have a publicity campaign, followed by an enforcement campaign, working in conjunction with the local schools and businesses.
- Burglary Prevention leading up to and following the Christmas period. Preventative patrols, promotion of immobilise / Smartwater, and the continued inclusion of NHW. This will also allow work on the prevention of vehicle crime.

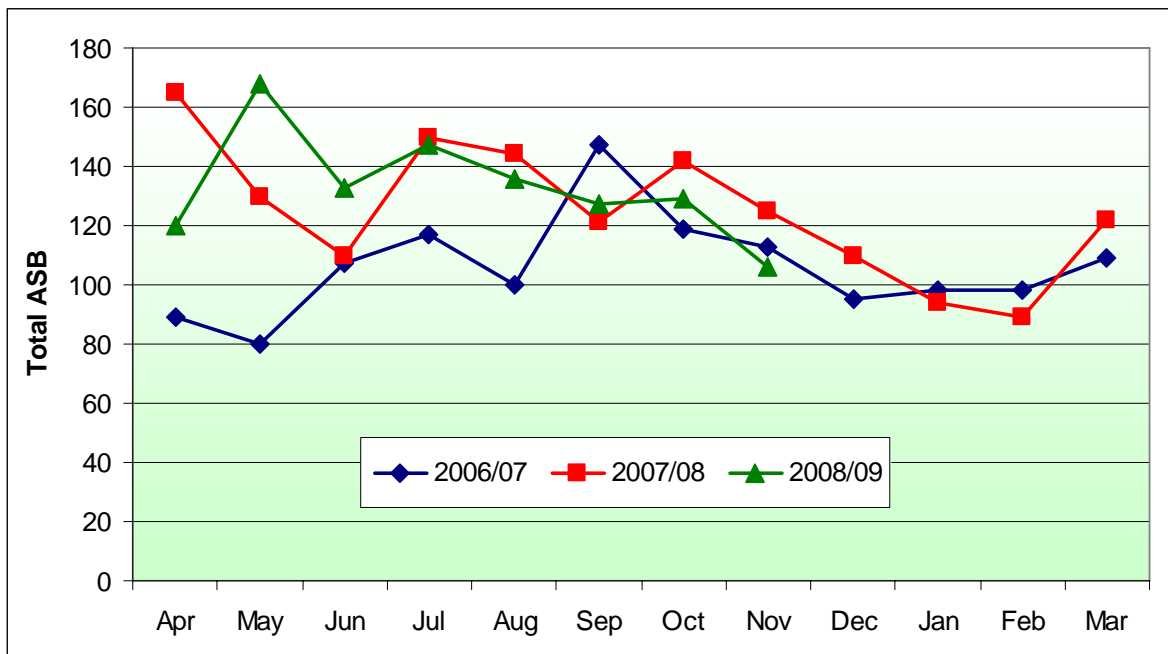


#### 4. Current Crime and Incident Levels

##### Total Crime



##### Total ASB<sup>3</sup>



<sup>3</sup> The ASB figures for the months between August and November 2008 were obtained through our own data due to problems encountered at Corporate Performance and may not represent the official figures released to the Home Office.

NOT PROTECTIVELY MARKED

**Current Crime and Incident Levels in Neighbourhood, by Ward<sup>4</sup>**

			Dwell. Burg.	Other Burg.	Violent Crime	Robbery	Theft of Vehicle	Theft from Veh.	Cycle Theft	Theft from Shop	Criminal Damage	Other Crime	TOTAL CRIME	TOTAL ASB
Nhod	<b>City South</b>	<i>Aug 08 – Nov 08</i>	47	55	138	8	22	65	96	6	100	156	<b>693</b>	<b>498</b>
		<i>Apr 08 – Jul 08</i>	28	62	127	9	9	45	84	10	101	131	<b>606</b>	<b>478</b>
		<i>Aug 07 – Nov 07</i>	39	35	102	5	17	54	92	10	124	165	<b>643</b>	<b>407</b>
Wards	<b>Trumpington</b>	<i>Aug 08 – Nov 08</i>	16	16	47	2	2	22	45	5	41	66	<b>262</b>	<b>196</b>
		<i>Apr 08 – Jul 08</i>	8	18	54	8	4	20	48	7	34	41	<b>242</b>	<b>119</b>
		<i>Aug 07 – Nov 07</i>	12	9	36	3	7	19	55	7	52	84	<b>242</b>	<b>143</b>
	<b>Cherry Hinton</b>	<i>Aug 08 – Nov 08</i>	9	13	39	3	12	14	10	0	34	51	<b>185</b>	<b>148</b>
		<i>Apr 08 – Jul 08</i>	7	14	36	0	3	13	6	3	34	38	<b>154</b>	<b>206</b>
		<i>Aug 07 – Nov 07</i>	12	9	36	3	7	19	13	7	52	54	<b>203</b>	<b>158</b>
	<b>Queen Edith</b>	<i>Aug 08 – Nov 08</i>	22	26	42	3	8	29	41	1	25	49	<b>246</b>	<b>154</b>
		<i>Apr 08 – Jul 08</i>	13	30	37	1	2	12	30	0	33	52	<b>210</b>	<b>153</b>
		<i>Aug 07 – Nov 07</i>	11	15	26	0	5	23	24	1	33	60	<b>198</b>	<b>106</b>

<sup>4</sup> The ASB figures for the months between August and November 2008 were obtained through our own data due to problems encountered at Corporate Performance and may not represent the official figures released to the Home Office.