

# Policing and Safer Neighbourhood Report

## Cambridge City South Neighbourhood

February 2010



**Steve Kerridge,**  
Neighbourhood Policing  
Inspector

**Paul Griffin, Strategy Officer**  
(Community Safety),  
Cambridge City Council

## CONTENTS

<b>1.</b>	<b>INTRODUCTION</b>	<b>2</b>
	<b>Aim</b>	<b>2</b>
	<b>Methodology</b>	<b>2</b>
<b>2.</b>	<b>PREVIOUS PRIORITIES &amp; ENGAGEMENT ACTIVITY</b>	<b>3</b>
	<b>Previous Priorities</b>	<b>3</b>
<b>3.</b>	<b>EMERGING ISSUES</b>	<b>4</b>
<b>4.</b>	<b>RECOMMENDATIONS</b>	<b>9</b>
<b>5.</b>	<b>CURRENT CRIME AND INCIDENT LEVELS</b>	<b>10</b>

### 1. Introduction

#### **Aim**

The aim of the Neighbourhood profile update is to provide an overview of action taken since the last reporting period, identify ongoing and emerging crime and disorder issues, and provide recommendations for future priorities and activity in order to facilitate effective policing and partnership working in the area.

The document should be used to inform Area Committee meetings, multi-agency neighbourhood action groups and neighbourhood policing teams, so that issues can be identified, effectively prioritised and partnership problem solving activity undertaken.

#### **Methodology**

This document was produced using the following data sources:

- Crime and Incident data from October 09 – January 10 and as a comparison data from June 09 – September 09 and October 08 – January 09.
- Information from the Neighbourhood Policing teams, February 09.
- Cambridge City Council, City Services data, October 09 – January 10, and as a comparison, data from the same period in 08/09.

## 2. Previous Priorities & Engagement Activity

### Previous Priorities

At the Area Committee on 19<sup>th</sup> November 2009, the following issues were adopted as priorities. The tables below summarise action taken and the current situation regarding the priorities which were set:

<b>Displaced Vehicle-related ASB - Cherry Hinton and Vicinity</b>	
<b>Objective</b>	<p>This issue was raised based on perception of the Councillor and on behalf of local residents at the recent Area Committee. It is believed that positive action targeting the congregation of young adults in vehicles and resultant ASB at Cherry Hinton Hall during the previous profile period has resulted in displacement to other areas in the City South / East borders.</p> <p>The objective was to ascertain if this perception is indeed evidenced through Police data and wider public opinion, anti-social congregation taking place in other areas and if so responding to it effectively.</p>
<b>Action Taken</b>	<p>Wider consultation was conducted with local Councillors and other key contacts in the community. This included on-going work with St. Bede's School whose grounds have been used previously by groups gathering.</p> <p>Police data shows no significant reports of similar gatherings to those dispersed from Cherry Hinton Hall as a result of earlier action.</p>
<b>Current Situation</b>	There is nothing currently to suggest that there has been any anti-social congregation as a result of previous positive action.
<b>Continue or Discharge?</b>	Discharge.

<b>Youth related anti-social behaviour (ASB) on Paget Rd, Foster Rd and Anstey Way</b>	
<b>Objective</b>	To tackle youth related ASB in the above area and identify and tackle those responsible for this behaviour

<p>Action Taken</p>	<p>The Police and ASB team have met with affected residents to reassure them that the reports of ASB are being acted upon.</p> <p>The ASB team is currently working with the Police and residents in order to take action against a number of individuals who have been identified as the ring leaders.</p> <p>The new look Trumpington Pavilion has now been open for 5 months, with a variety of different projects taking place. So far it has had 600 visits from children &amp; young people and parents participating in a variety of different activities, including sports, cooking, pool and arts and crafts. Children and Young Peoples Participation Service (ChYpPS) are also working in partnership with the County Youth Service on a number of projects including a girls' group and boys' group.</p> <p>To find out more information about children &amp; young people projects running at the pavilion call 01223 457873 or email <a href="mailto:chypps@cambridge.gov.uk">chypps@cambridge.gov.uk</a></p>
<p>Current Situation</p>	<p>The City Council ASB team continue to receive reports of youth related ASB in Trumpington, mainly the Anstey Road Estate area.</p>
<p>Continue or Discharge?</p>	<p><b>Continue</b> – work to tackle those responsible is still ongoing.</p>

### Engagement Activity

Monthly engagement events are held across City South. Visit [www.cambs.police.uk](http://www.cambs.police.uk) under

**“My Neighbourhood” or 0345 456 456 4 for details of upcoming events**

## Emerging Issues

### Neighbourhood trends

Offence levels across City South have decreased from 679 offences in the previous period to 592 offences in this period. This is mainly due to decreases in criminal damage offences. Anti-social behaviour (ASB) incidents have decreased during the period and levels are comparatively lower than during both the previous period and the same period last year.

### Trumpington

- Total crime in Trumpington has decreased compared to both the previous period (208 offences vs. 248 offences) and the same period last year (285 offences).
- There were 6 dwelling burglaries in this period compared with 11 in the previous period and 14 in the same period last year. There do not appear to be any patterns or trends in the dwelling burglaries during the period.
- Violent crime offences have remained stable compared to the previous period (42 offences vs. 40 offences). In 19 out of the forty-two offences an offender has been arrested and charged.
- There were 23 'theft from vehicle' offences in this period compared to 29 offences in the previous period and 35 offences in the same period last year. Three offences occurred on Bateman Road on different dates during the period and in all three offences the vehicles had their windows smashed and items stolen from within. In 13 other offences vehicles had their windows smashed and items such as handbags, mobile phones and satellite navigation systems were stolen from within.
- Cycle theft offences have decreased from 55 offences in the previous period to 45 offences in this period. Common locations for cycles to be stolen from are Lensfield Road (8), Hills Road (7), Trumpington Road (6), Gresham Road (4) and Panton Road (4).
- 'Theft from shop' offences have increased to 15 offences in this four month period from 6 offences in the previous 4 month period. This is also an increase compared to the same period last year when there was one offence.
- ASB incidents in Trumpington Ward have decreased from 169 incidents in the previous period to 157 incidents in this period. Eleven of the incidents concerned rowdy and inconsiderate behaviour at the YMCA, Gonville

Place on several occasions during the period. Five of the incidents concerned the same address and were related to a neighbour dispute. Eight of the incidents concerned the same address on Paget Road; the informant was reporting ongoing problems with youths.

- Between October 2009 and January 2010 there were six reports of abandoned vehicles in the ward compared with ten during the same period the previous year. This included two vehicles which were not on site following inspection and one which was later claimed by its owner. In addition, notice stickers were applied to two illegally parked vehicles.
- Between October 2009 and January 2010 there were 27 reports of fly-tipping within the ward compared with 44 during the same period the previous year. All were removed within 24 hours and there was sufficient evidence to issue three warning letters to domestic offenders. Anstey Way (6), Monkswell (3) and Russell Court (3) were the hotspots during this period and one of the offences at Anstey Way resulted in one of the formal warning letters being sent. The main hotspots during the same period the previous year were Anstey Way (6), Hanover Court (4) and Princess Court (4).
- Between October 2009 and January 2010, 31 derelict cycles were dealt with compared with 19 during the same period the previous year. Hauxton Road (8), Coronation Street (4) and Gonville Place (3) were the hotspot areas. During the same period the previous year, Hills Road and Russell Court (both 3) were the hotspots.
- Between October 2009 and January 2010 three needles were found and reported in the ward compared with no needles during the same period the previous year. These were removed from bushes at Gonville Place near the Queen Anne Car Park.
- Between October 2009 and January 2010, 12 items of graffiti were removed by the City Rangers compared with 7 items during the same period the previous year. Trumpington Road (7) was a hotspot, whereas Gresham Road (also with 7) was a hotspot during the 08/09 period.

## **Cherry Hinton**

- Offence levels in Cherry Hinton Ward in the last four month period have decreased from 163 offences to 118 offences. This is also a decrease compared to the same period last year when there were 160 offences.

- Dwelling burglary offences have increased compared to both the previous period (20 offences vs. 12 offences) and compared to the same period last year (14 offences). In 14 of the offences offenders had gained entry by forcing a window or a door.
- Violent crime offences have more than halved compared to the previous period, from 42 offences to 19 offences. This is also a decrease compared to the same period last year when there were 33 offences. Six of the offences were domestically related and concerned violence between partners in a relationship.
- There were 15 'theft from vehicle' offences in this period compared to 10 in the previous period and 12 during the same period last year. In nine of the offences the vehicle was entered via a smashed window and items such as Satellite Navigation Systems, handbags, MP3 players and digital cameras were stolen. In two offences both the front and rear index plates were stolen from the vehicles.
- ASB incidents have decreased compared to the previous period (101 incidents vs. 145 incidents) and the same period last year (142 incidents). Nine of the incidents occurred at Tenby Close and concerned several of the residents calling to complain about youths in the area congregating on the stairwells and causing a disruption. Other common locations for ASB were High Street (10), Colville Road (9) and St Bedes Corner (7).
- Between October 2009 and January 2010 there were 8 reports of abandoned vehicles in the ward compared with 31 during the same period the previous year. This included two vehicles, which were not on site following inspection and two which were later claimed by their owners. Another vehicle was referred to the police. During the 09/10 period there were no specific hotspots, but during the same period the previous year Cherry Hinton Road (4), Fulbourn Road (3) and Wenvoe Close (3) were the hotspots.
- Between October 2009 and January 2010 there were 23 reports of fly-tipping within the ward compared with 39 during the same period the previous year. All were removed within 24 hours and there was sufficient evidence to issue one warning letter to a domestic offender. In addition, a Section 46 Notice was issued to a domestic offender and another case of a domestic offender is pending court action. Colville Road (3), Fulbourn Road (3) and Teversham Drift (3) were the hotspots and offences at Fulbourn Road have resulted in two of the enforcement actions. Hotspots during the 08/09 period were Bliss Way (11), Cherry Hinton High Street (5) and Fulbourn Road (3).

- Between October 2009 and January 2010, 15 derelict cycles were dealt with compared with 23 during the same period the previous year. There were no specific hotspots, but during the 08/09 period, Ainsdale (8), Teversham Drift (3) and Cherry Hinton Road (3) were the hotspots.
- Between October 2009 and January 2010 one needle was reported in the ward compared with one needle during the same period the previous year.

### **Queen Ediths**

- Total crime in Queen Edith's ward has increased in this four month period compared to the last four month period (106 offences vs. 182 offences). This is a decrease compared to the same period last year when there were 234 offences.
- Dwelling burglary offences have more than doubled compared to the previous period (37 offences vs. 15 offences). This is also an increase compared to the same period last year when there were 21 offences. An offender has been arrested and charged in 6 of these offences. A common MO used in 17 of the offences was to force a window or door (sometimes using garden tools) to gain entry.
- There were 14 dwelling burglary offences in this period compared to 16 offences in the previous period and 24 offences in the same period last year. In four of the offences a shed was entered and a cycle stolen from within. In 5 other offences a shed was entered and items such as a lawn mover, power drill and diesel were stolen.
- Violent crime offences have halved compared to the same period last year (16 offences vs. 33 offences). In 9 out of the 16 offences an offender has been arrested and charged. Seven of the offences occurred at Addenbrookes Hospital, Hills Road and 6 of the 7 offences were assaults.
- 'Theft from vehicle' offences have almost doubled compared to the previous period (20 offences vs. 11 offences). Offence levels have remained stable compared to the same period last year when there were 23 offences.
- There were 46 cycle theft offences in this 4 month period compared to 52 offences in the previous period and 43 offences in the same period last year. Hotspots for cycle theft are Hills Road (18), particularly Addenbrookes Hospital (10) and Homerton College (7), Babraham Road (4) and Gunhild Way (4).



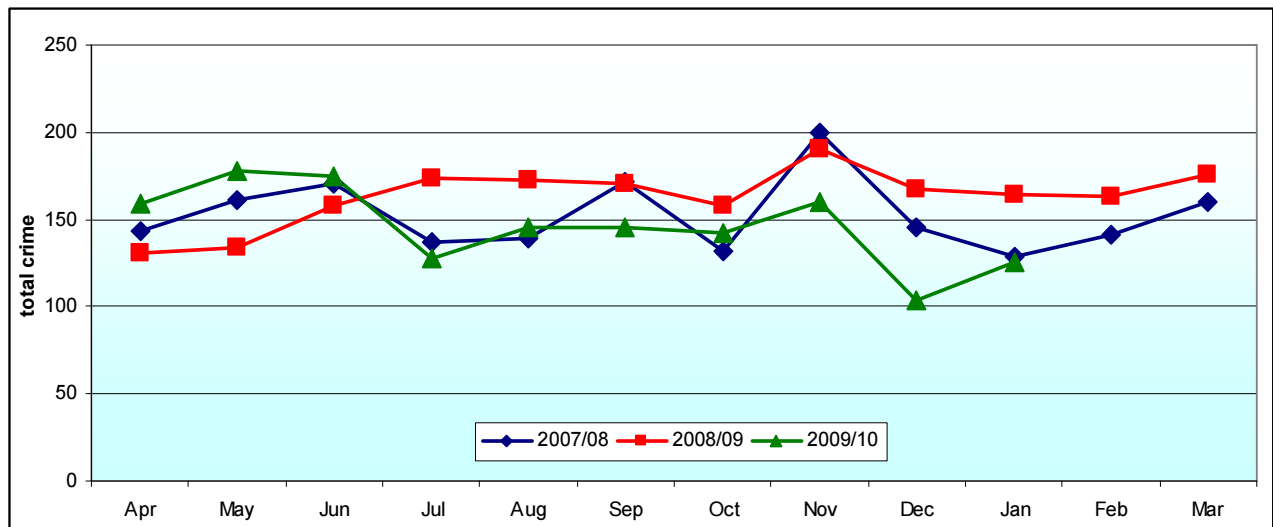
- Other crime offences have increased from 33 offences in the previous period to 42 offences in this period. This is a decrease compared to the same period last year when there were 53 offences. Eleven of the offences were thefts which occurred at Addenbrookes Hospital, Hills Road and items stolen included cash, mobile phones and MP3 players.
- ASB incidents have decreased from 154 incidents in the previous period to 129 incidents in this period. This is also a decrease compared to the same period last year when there were 145 incidents. Twenty three of the incidents took place at Addenbrookes Hospital and mostly concerned rowdy and inconsiderate behaviour such as being aggressive, refusing to leave the hospital and being verbally abusive.
- Between October 2009 and January 2010 there were 5 reports of abandoned vehicles in the ward compared with 15 during the same period the previous year. This included four vehicles which were not on site following inspection. There were no specific hotspots during both periods.
- Between October 2009 and January 2010 there were 5 reports of fly-tipping within the ward compared with 12 during the same period the previous year. All were removed within 24 hours, but there was insufficient evidence in order to take enforcement action. There were no hotspots during both periods.
- Between October 2009 and January 2010, 18 derelict cycles were dealt with compared with 8 during the same period the previous year. Baldock Way (5) and Templemore Close (3) were the hotspots, but during the same period the previous year there were no specific hotspots.
- Between October 2009 and January 2010, six needles were removed from a wheelie bin near Elsworth Place, compared with one needle during the same period the previous year.

### **3. Recommendations**

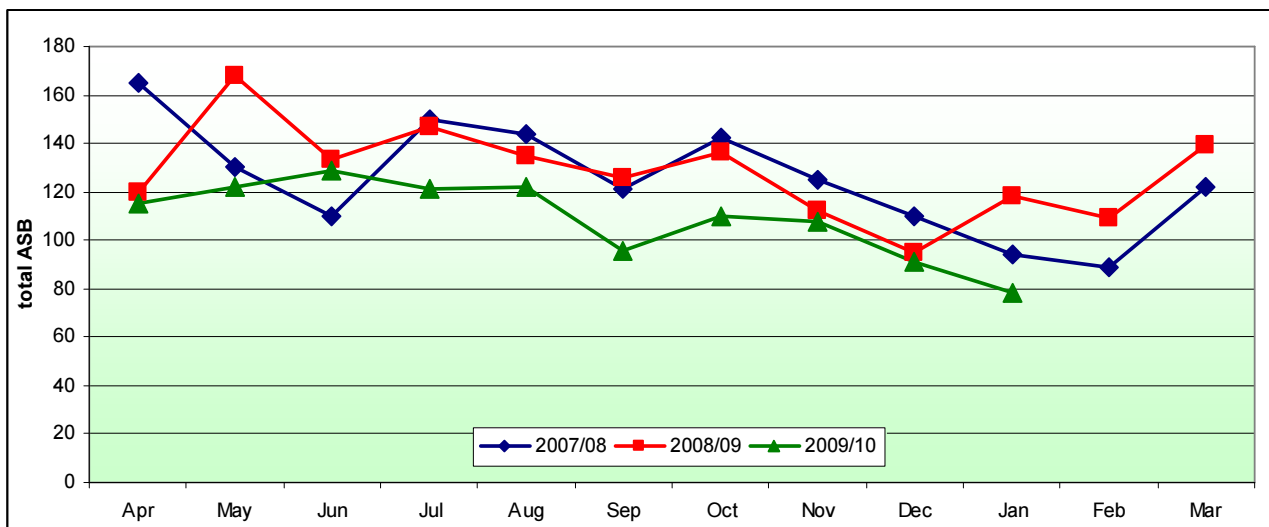
- Youth related anti-social behaviour (ASB) on Paget Rd, Foster Rd and Anstey Way

#### 4. Current Crime and Incident Levels

##### Total Crime



##### Total ASB



## Current Crime and Incident Levels in Neighbourhood, by Ward

			Dwell. Burg.	Other Burg.	Violent Crime	Robbery	Theft of Vehicle	Theft from Veh.	Cycle Theft	Theft from Shop	Criminal Damage	Other Crime	TOTAL CRIME	TOTAL ASB
Nhod	City South	Oct 09 – Jan 10	63	32	77	4	10	58	100	17	68	103	<b>532</b>	<b>387</b>
		June 09 – Sept 09	38	40	102	7	8	50	124	9	97	118	<b>593</b>	<b>468</b>
		Oct 08 – Jan 09	49	53	111	11	27	70	92	1	132	223	<b>679</b>	<b>461</b>
Page 5 of 15	Trumpington	Oct 09 – Jan 10	6	9	42	1	3	23	45	15	25	39	<b>208</b>	<b>157</b>
		June 09 – Sept 09	11	17	40	0	6	29	55	6	44	40	<b>248</b>	<b>169</b>
		Oct 08 – Jan 09	14	14	35	1	4	35	41	1	71	69	<b>285</b>	<b>174</b>
	Cherry Hinton	Oct 09 – Jan 10	20	9	19	2	3	15	9	0	19	22	<b>118</b>	<b>101</b>
		June 09 – Sept 09	12	7	42	4	2	10	17	3	37	29	<b>163</b>	<b>145</b>
		Oct 08 – Jan 09	14	15	33	8	14	12	8	0	35	21	<b>160</b>	<b>142</b>
	Queen Edith	Oct 09 – Jan 10	37	14	16	1	4	20	46	2	24	42	<b>206</b>	<b>129</b>
		June 09 – Sept 09	15	16	20	3	1	11	52	0	31	33	<b>182</b>	<b>154</b>
		Oct 08 – Jan 09	21	24	33	2	9	23	43	0	26	53	<b>234</b>	<b>145</b>

This page is intentionally left blank