

NOT PROTECTIVELY MARKED

# Neighbourhood profile update Cambridge City West Neighbourhood

January 2009



Inspector Steve Kerridge  
Cambridgeshire Constabulary

Paul Griffin  
Strategy Officer (Community  
Safety) Cambridge City Council



NOT PROTECTIVELY MARKED

## CONTENTS

<b>1. INTRODUCTION</b>	<b>2</b>
<b>Aim</b>	<b>2</b>
<b>Methodology</b>	<b>2</b>
<b>2. PREVIOUS PRIORITIES &amp; ENGAGEMENT ACTIVITY</b>	<b>3</b>
<b>Previous Priorities</b>	<b>3</b>
<b>3. EMERGING ISSUES</b>	<b>6</b>
<b>4. RECOMMENDATIONS</b>	<b>12</b>
<b>5. CURRENT CRIME AND INCIDENT LEVELS</b>	<b>13</b>

### 1. Introduction

#### **Aim**

The aim of the Neighbourhood profile update is to provide an overview of action taken since the last reporting period, identify ongoing and emerging crime and disorder issues, and provide recommendations for future priorities and activity in order to facilitate effective policing and partnership working in the area.

The document should be used to inform multi-agency Area Committee meetings and neighbourhood policing teams, so that issues can be identified, effectively prioritised and partnership problem solving activity undertaken.

#### **Methodology**

This document was produced using the following data sources:

- Crime and Incident data, from August 08 – November 08 and as a comparison data from April 08 – July 08 and August 07 – November 07<sup>1</sup>.
- Information from the Neighbourhood Policing teams, December 2008.
- Cambridge City Council, City Services data, August – November 2008.

---

<sup>1</sup> **PLEASE NOTE:** This document was produced in December 2008 and would therefore not include crime and incident data from this month.

## 2. Previous Priorities & Engagement Activity

### Previous Priorities

At the Area Committee meeting on 18<sup>th</sup> September 2008, the following issues were adopted as priorities. The tables below summarise action taken and the current situation regarding the priorities which were set:

<b>1. Street Robberies across the West Neighbourhood</b>	
<b>Objective</b>	To seek to minimise the number of robberies of persons in the West neighbourhood.
<b>Action Taken</b>	<p>Increased levels of patrols have been delivered in key areas and at key times utilising both neighbourhood officers and staff funded by a specialist project entitled Operation Sodium (police targeted patrols and enforcement), which increases capacity to deter and deal with incidents in the city centre during peak periods for the night-time economy and violent offending.</p> <p>Patrols have also been supplemented by members of the Special Constabulary.</p> <p>In addition to promoting robust action, focus has been concentrated on the identification of potential victims during patrols, providing information and guidance and where possible and appropriate seeking to minimise risk and vulnerability.</p> <p>Regular scrutiny and quality assurance of all robbery investigations has been conducted by the City Detective Inspector to ensure speed and diligence in every investigation of these most emotive of crimes. This is a precursor to the restructuring of how robberies are investigated in the new year (see below)</p> <p>In terms of prevention, both foreign language schools and the City's two universities have been visited by local staff and a series of inputs delivered to increase awareness amongst those who may be vulnerable to such offending.</p>
<b>Current Situation</b>	There were 30 offences in the last reporting period, a large number of these were in the first few weeks. This number is a reduction on the same period last year. Following a specific police operation there has been a reduction in the number of offences being recorded in the later weeks of this reporting period compared to the earlier weeks. The operation has resulted in 4 resulted in arrests, with 3 of those suspects charged. 3 cases remain active investigations currently with the City CID.

	<p>There is some internal restructuring within the CID that will alter how robberies and other serious acquisitive crimes are investigated, taking them from being allocated by geography to single ownership by a specialist team.</p> <p>This will further increase the focus and accountability for the investigation of burglaries, robberies and vehicle crimes and is a welcome development. This team will commence duties in January 2009.</p>
<b>Continue or Discharge?</b>	Discharge

## 2. Anti-social use of Cycles and Vehicles across the West Neighbourhood

<b>Objective</b>	To reduce cycling offences, raise public confidence in the police and increase positive public perceptions of Cambridge City Centre
<b>Action Taken</b>	<p>Problems were tackled through both education and enforcement.</p> <p>A pre-enforcement campaign consisted of media coverage highlighting local problems and community safety information provided by PCSOs to those across the city.</p> <p>Police, Council and the Fire Service gave advice to over 1000 students at Long Road 6th Form during a three day cycle safety campaign.</p> <p>Partnership resources were also invested in the week long 'Sort your lights out' campaign between 27th and 31st of October. In total 202 tickets were issued for a variety of offences within the City Centre, however the City Council issued and fitted over 150 free sets of lights to persons stopped without them to promote safer cycling. Informal feedback from students in the city suggested the campaign was highlighted in lectures to raise awareness of this work.</p> <p>PC Steve Hinks pursued a 'whistle' policy- i.e. the use of a police whistle to attract attention of offending cycling, with attracted public support as well as national level press interest which presented Cambridge City Centre in a positive light and increased awareness during coverage</p>

	<p>Numerous actions under this plan received media interest from BBC Look East, Q103, Star 107, ITV Anglia News, BBC Radio 5 live and Cambridge Evening News. A live stream from one of the City's cycle shops formed part of a programme long discussion concerning cycling thefts and offences. Again Cambridge's approach received positive coverage.</p> <p>A mini-action plan agreed with representatives of the local traders association for Bridge St/Magdalene St was commenced. This resulted in 7 Fixed Penalty Notices for cycling offences issued.</p>
<b>Current Situation</b>	<p>There has been a noticeable increase in the use of cycles with lights fitted during hours of darkness, but it remains very difficult to quantify success. Qualitative feedback to date has been positive from a number of agencies and community representatives.</p> <p>There has been open and healthy debate with cyclists concerning some of the problems they face across the city with dangers presented by motorised vehicles. There has been a call for similar action to protect cyclists and promote safer and more convenient use of local transport networks for all users.</p>
<b>Continue or Discharge?</b>	Discharge

### 3. Cycle crime across the neighbourhood

<b>Objective</b>	To reduce the number of cycles and cycle parts stolen in the West/Central neighbourhood
<b>Action Taken</b>	<p>Problems were tackled through both education and enforcement.</p> <p>The neighbourhood policing team have carried out high profile stop checks, this has impacted in two ways:</p> <ul style="list-style-type: none"> <li>• Reassuring to the public that work is being carried out</li> <li>• Deterring thieves and letting them also now that work is being carried out.</li> </ul>

	<p>Partnership working with the British Transport Police crime recording department to ensure recovered cycles are identified and strengthen information sharing. A single point of contact has been established to improve and aid the sharing of information.</p> <p>CCTV has been utilised to provide information in the prevention and detection of offences.</p> <p>Internal communication systems have been utilised to ensure all officers are aware of potential offenders.</p> <p>Crime prevention events have been held at colleges to raise awareness about cycle safety, cycle crime and the importance of registering cycles on 'Immobilise'.</p> <p>During the period there have been 26 arrests for theft of cycles, in 10 of those cases formal action was taken.</p>
<b>Current Situation</b>	Whilst the overall level of cycle crime during the period is similar to that of the same period last year (404/403), during the months of November and December to date (18/12/08) thefts of cycles have reduced from an average of nearly 4 a day to 2 a day.
<b>Continue or Discharge?</b>	Discharge

#### 4. Violent crime associated with the night time economy

<b>Objective</b>	To effectively tackle violent crime that is directly linked to alcohol consumption in the Night time economy
<b>Action Taken</b>	<p>The violent crime task group has increased the frequency of its meetings to respond more efficiently to emerging issues and membership of the group now includes a health representative from Addenbrookes.</p> <p>Throughout September there was an extensive programme of crime prevention stands, talks and presentations to the new student intake.</p> <p>The Sensible Socialising campaign was held on 27 and 30 of Oct, this was a mutli agency approach combining members of Pub Watch, Cambridge Business Against Crime (CAMBAC), Police, NHS and Cambridge University Student Union.</p>

	<p>During the Christmas and New Year period there are a number of initiatives taking place:</p> <ul style="list-style-type: none"> <li>• Night time medical and care facility, operating in the city centre</li> <li>• Taxi marshalling pilot, led by CAMBAC and Hyline security, throughout the month of December funded by a Safer City Grant from the City Council.</li> <li>• Alcohol intervention in custody pilot, a worker from Drinksense will be providing assistance/advice to people who have been arrested in relation to alcohol offences, this is also supported by the conditional cautioning project.</li> </ul> <p>There have been 19 Operation Sodium (police targeted patrols and enforcement) patrols between October and December.</p> <p>A 'Tackling Alcohol Related Violent Crime' seminar was held in September to ensure a truly joined up approach to tackling this issue is taken, some of the tactics mentioned above were agreed at this conference.</p> <p>Arrangements are being made for additional dates for the deployment of the metal detector archway in pubs and clubs in the city centre.</p> <p>A Street Pastor team is in the early stages of development and it is hoped to be launched in the spring (night time support to vulnerable people).</p>
<p><b>Current Situation</b></p>	<p>Violent crime in the West area of the city has decreased when compared to the previous reporting period and is consistent with the same period last year. This is a Community Safety Partnership priority and work will be on-going through the Violent Crime Task Group.</p>
<p><b>Continue or Discharge?</b></p>	<p>Continue</p>

## Emerging Issues

### Neighbourhood trends

Total crime in City West has fallen compared to the previous period, however, this is still high compared to the same period last year. Traditionally, offence levels are expected to increase in the months leading up to Christmas. Increases were observed in theft from vehicle offences, robbery and cycle thefts. Although, cycle theft and robbery levels are consistent with the level recorded in the same period last year. A spate of vehicle offences in the Neighbourhood in September has caused the level of theft from vehicle offences to double since the previous period. However, this has subsequently declined after several known offenders were arrested and charged. Anti-social behaviour (ASB) incidents have also decreased compared to both the previous period and the same period last year.

### Newnham

- Total crime in Newnham has risen over the 4 month period from 164 in the previous period to 183 currently. This was due to rises in theft from vehicle offences and robbery offences.
- There were 39 theft from vehicle offences during the 4 month period compared to only 16 in the previous period. Offences peaked in September (accounting for 17 offences) where multiple vehicles were targeted on several nights during the last fortnight of September. This is comparatively high compared to September last year which only reported 5 offences. In these offences, offender(s) have targeted vehicles parked overnight on Wilberforce Road and surrounding roads in the vicinity. Vehicles parked at the British Antarctic Survey on Madingley Road were also targeted. Incidentally, fingerprint identification came back for 1 of these offences and the offender was subsequently arrested and charged for the offence. More recently vehicles parked at University properties and the Rugby club on Grantchester Road have been targeted. This may coincide with the return of students to the city and the higher volume of vehicles parked at these locations. Also note, that theft from vehicle offence levels for November are now consistent with November last year.
- There were 4 robbery offences (August – 3 and November – 1) reported during the 4 month period compared to none in the previous period. However, note that there were 7 offences reported during the same period last year. Two of the August robberies occurred on Lammas Land, 1 of these offences has been detected with 3 offenders being arrested and charged, DNA identified 1 of the offenders.



- Burglary offences in Newnham ward remain relatively stable with the previous period, however, non-dwelling burglaries are actually comparatively higher than the same period last year. The vast majority of these offences targeted student residences within the Colleges in the ward.
- ASB incidents have fallen from 86 in the previous period to 50 incidents reported in the current period. This is also comparatively much lower than the 98 incidents reported in the same period last year. Areas with the highest level of incidents reported were clustered around Grantchester Street, Lammas Land and Newnham Road.
- Between August and November there were 9 reports of abandoned vehicles in the ward. This included four, which were later claimed by their owners.
- Between August and November there were 20 reports of fly tipping in the ward. All were removed within 24 hours. One case resulted in a formal warning letter being sent to a domestic offender and waste transfer documentation was requested from two trade offenders. Lammas Land (7) was the hotspot during this period.
- 34 derelict cycles were dealt with between August and November. Lammas Land (7) and Newnham Road (6) were the hotspots during this period.
- 15 items of graffiti were removed between August and November. Lammas Land/Lammas Field (5) was a hotspot during this period
- 6 needles were removed between August and November.

## **Castle**

- Total crime in the ward has fallen from 172 offences reported in the previous period to 154 with decreases observed across the majority of crime types.
- Cycle theft in Castle ward has remained relatively stable with the previous period with 54 offences reported. Although this is seasonally low, as it is far lower than the 71 cycles stolen from the ward in the same period last year. Offender(s) continue to target cycles stored on College grounds due to their abundance.

- Offence levels throughout the 4 month period for most crime types were low. No further crime trends were identified.
- ASB incidents have fallen from 85 incidents reported in the previous period to 47 in the current 4 month period. Incidents were concentrated around the Castle Street and Shelly Row area. ASB reports ranged from youths congregating and being a nuisance, harassment, to general ASB from inebriated people.
- Between August and November there were 7 reports of abandoned vehicles in the ward. This included five, which were not on site following inspection and two, which were later claimed by their owners.
- Between August and November there were 11 reports of fly tipping in the ward. All were removed within 24 hours. Two are pending further enquiries.
- 24 derelict cycles were dealt with between August and November. Lexington Close (5) was a hotspot during this period.
- 4 items of graffiti and 4 needles were removed between August and November.

## **Market**

- Total crime has been reduced during the period from 1594 offences to 1540 offences in the current period. However, this is still higher than the level recorded for the same period last year of 1368 offences. Increases in cycle theft, theft from shop, theft from vehicles and “other crime” account for the large difference seen in the same period last year.
- During the 4 month period, 313 pedal cycles were reported stolen compared to 266 in the previous period and 290 in the same period last year. Traditionally, cycle theft is expected to increase with the return of students with their bicycles to the city. However, despite the increase in offences, the monthly distribution of these offences indicates that cycle theft in Market ward is actually following a downward trend (August – 88, September – 84, October – 78, November – 63). Hotspot areas for cycle theft include the Grafton Centre (23 offences), Regent Street (22) and St. Andrews Street (19) and Parkside (16).
- Shoplifting offences have also increased during the period to a level higher than both the previous period and the same period last year. Seasonally, shoplifting offences increase in the months leading up to Christmas. This

further increase in offence levels began in the month of September and peaked in November and is likely to continue through December. Seasonal factors are still likely to have an impact on offence levels. Particular hotspots for offences include Boots the Chemist, Sainsbury's and Marks and Spencers.

- Theft from motor vehicle offences have increased to 26 compared to 11 both in the previous period and the same period last year. Offences in Market ward peaked in September accounting for 10/26 offences. This was thought to be part of a series of theft from vehicle offences as during the month of September, theft from vehicle offences were seen to increase in both City West and in City North. Several known offenders are believed to be responsible and proactive policing has since seen vehicle offences decline (October – 7 and November – 4).
- There were 24 robberies reported during the period (23 personal robberies and 1 business robbery). Half of these offences occurred in the month of August with the remaining months remaining relatively stable with 3-4 offences each. Offender(s) were mainly targeting people on the green spaces. The offenders in 7 of these offences were arrested and subsequently charged for robbery.
- Violent offences have fallen during the period but remain relatively consistent with the same period last year. Offence levels were distributed during the period as follows: August – 99, September – 54, October – 68, and November – 57. As expected, many of the offences are associated with the night-time economy as the majority of them occurred between 07:00hrs and 04:00hrs. Hotspots lie on the main thoroughfares into and out of the town centre such as Sidney Street, Regent Street and other roads in the surrounding area. A number of offences also occurred on Parkers Piece.
- ASB incidents have fallen compared to the previous period and the same period last year. These also appear to be mainly associated with the night-time economy as most of the incidents occurred overnight (mainly between 19:00hrs and 05:00hrs). Similar to the violent offence reported in the ward, the hotspot locations were St. Andrews Street, Sidney Street, Regent Street and Parkside.
- Between August and November there were 10 reports of abandoned vehicles in the ward. This included three, which were not on site following inspection and three, which were later claimed by their owners.

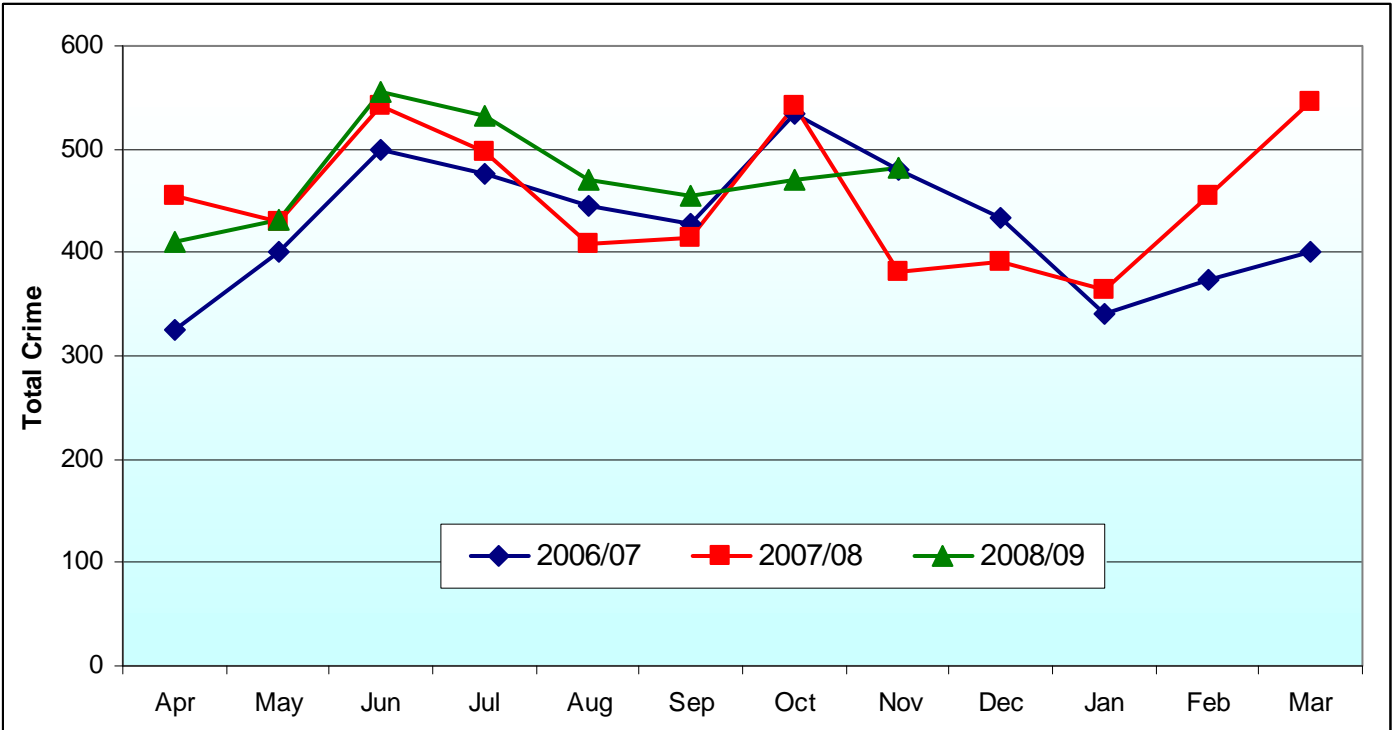
- Between August and November there were 144 reports of fly tipping in the ward. All were removed within 24 hours. Six warning letters were sent (Five to domestic and one to a trade offender) and waste transfer documentation was requested from 13 trade offenders. A section 47 notice was also issued to a trade offender.
- 445 derelict cycles were dealt with between August and November. Sidney Street (35), Emmanuel Street (20) and Trumpington Street (19) were the hotspots during this period.
- 1188 reports of anti-social cycling occurred between August and November. Most of these occurred in Trinity Street (300), Sidney Street (250) and Bridge Street (186).
- 42 items of graffiti and were removed between August and November. Tennis Court Road (6) was a hotspot during this period.
- 119 needles were removed between August and November. Adam and Eve Car Park (79) and Grafton West Car Park (14) were the hotspots during this period.
- 56 vagrants were noted by the City Rangers in the market ward between August and November. 31 were reported to CCTV.

## **Recommendations**

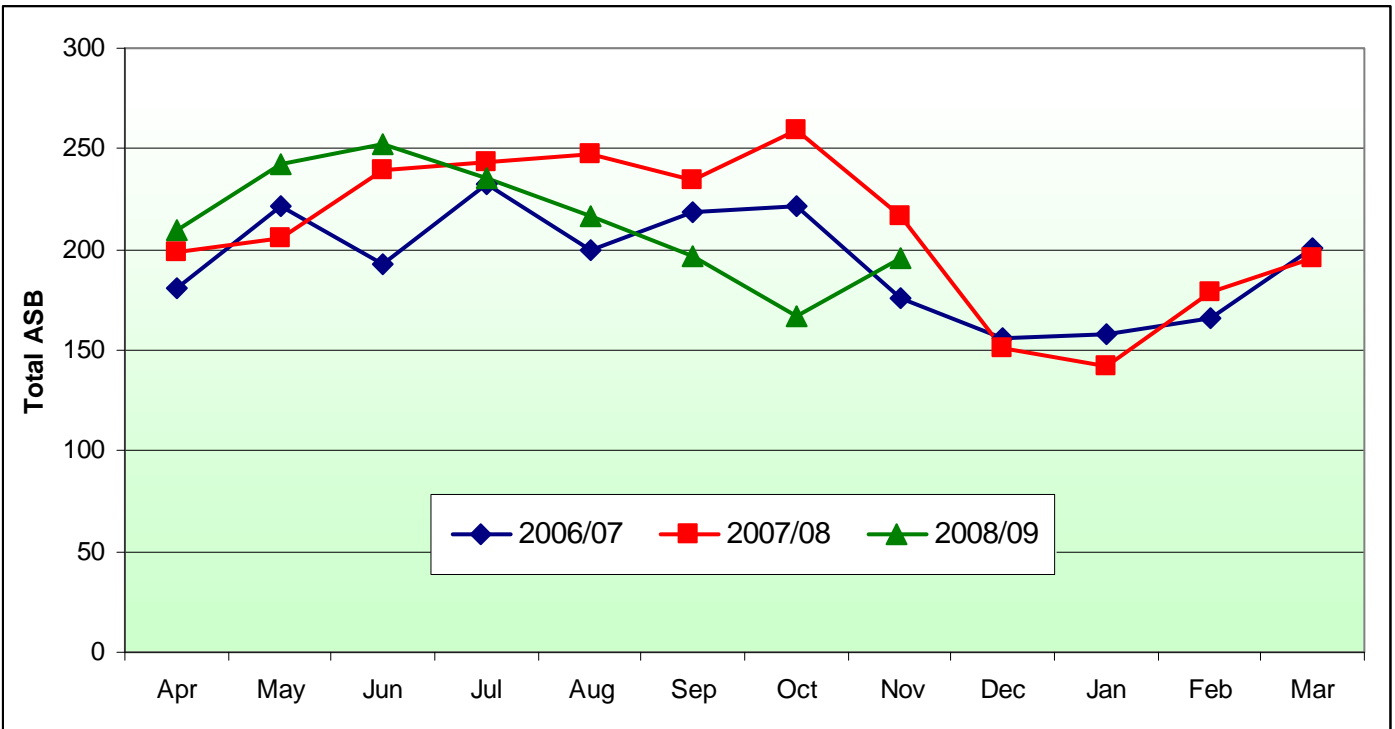
- Theft from motor vehicles
- Discussion regarding night time economy

### 3. Current Crime and Incident Levels

#### Total Crime



#### Total ASB<sup>2</sup>



<sup>2</sup> **Please note:** Due to a problem at Corporate Performance, the figures for **ASB incident** levels between August 2008 and November 2008 were obtained using i2 Workstation and may not represent the official statistics submitted to the Home Office.

Current Crime and Incident Levels in Neighbourhood, by Ward<sup>3</sup>

			Dwell. Burg.	Other Burg.	Violent Crime	Robbery	Theft of Vehicle	Theft from Veh.	Cycle Theft	Theft from Shop	Criminal Damage	Other Crime	TOTAL CRIME	TOTAL ASB
Nhod	City West	Aug 08 – Nov 08	26	51	316	30	6	80	404	309	119	536	1877	777
		Apr 08 – Jul 08	36	61	345	15	5	39	368	287	118	656	1930	939
		Aug 07 – Nov 07	34	51	318	35	21	48	403	236	117	483	1746	957
Wards	Newnham	Aug 08 – Nov 08	6	25	19	4	2	39	37	3	18	30	183	50
		Apr 08 – Jul 08	4	20	25	0	1	16	43	6	18	31	164	86
		Aug 07 – Nov 07	10	13	16	7	6	22	42	3	10	37	166	98
	Castle	Aug 08 – Nov 08	12	3	19	2	1	15	54	3	21	24	154	47
		Apr 08 – Jul 08	18	6	13	3	2	12	59	5	17	37	172	85
		Aug 07 – Nov 07	12	15	21	0	6	15	71	1	32	39	212	70
	Market	Aug 08 – Nov 08	8	23	278	24	3	26	313	303	80	482	1540	680
		Apr 08 – Jul 08	14	35	307	12	2	11	266	276	83	588	1594	768
		Aug 07 – Nov 07	12	23	281	28	9	11	290	232	75	407	1368	789

<sup>3</sup> Please note: Due to a problem at Corporate Performance, the figures for ASB incident levels between August 2008 and November 2008 were obtained using i2 Workstation and may not represent the official statistics submitted to the Home Office.