

Neighbourhood Profile Update Cambridge City South Neighbourhood

August 2008



Jon Hutchinson,
Neighbourhood Policing
Inspector

**Paul Griffin, Strategy Officer
(Community Safety),
Cambridge City Council**



CONTENTS

1. INTRODUCTION	3
Aim	3
Methodology	3
2. PREVIOUS PRIORITIES & ENGAGEMENT ACTIVITY	4
Previous Priorities	4
3. EMERGING ISSUES	9
4. RECOMMENDATIONS	13
5. CURRENT CRIME AND INCIDENT LEVELS	14

1. Introduction

Aim

The aim of the Neighbourhood profile update is to provide an overview of action taken since the last reporting period, identify ongoing and emerging crime and disorder issues, and provide recommendations for future priorities and activity in order to facilitate effective policing and partnership working in the area.

The document should be used to inform Area Committee meetings, multi-agency Neighbourhood Action Groups and Neighbourhood Policing Teams, so that issues can be identified, effectively prioritised and partnership problem solving activity undertaken.

Methodology

This document was produced using the following data sources:

- Crime and Incident data, from April 08 – July 08 and as a comparison data from April 07 – July 07 and December 07 – March 08
- Information from the Neighbourhood Policing teams, August 08
- Cambridge City Council, City Services data, April – June 08

2. Previous Priorities & Engagement Activity

Previous Priorities

At the Area Committee meeting on 8th May 2008, the following issues were adopted as priorities. The tables below summarise action taken and the current situation regarding the priorities which were set:

Tackling Alcohol related Anti-Social Behaviour (ASB) in Green and Open Spaces across the Neighbourhood	
Objective	To disperse large groups, reduce alcohol related violence, reduce damage to property and gather intelligence on those that sell alcohol to youths.
Action Taken	<p>Police patrols have been increased in the areas identified as hotspots, namely:</p> <ul style="list-style-type: none"> • Cherry Hinton Hall, • Nightingale Avenue Recreation Ground • Paget Rd Green <p>These patrols were conducted on a daily basis throughout June and July.</p> <p>The main focus of activity has been on Cherry Hinton Hall, specifically by the “pond” area where young people have been drinking to excess. On one occasion a group of 15 year olds was apprehended with 14 cans of lager on them. One of these youths was sick in front of officers.</p> <p>Where young people have been found in possession of alcohol they have been taken home to their parents and leaflets provided to their parents on the dangers of alcohol misuse.</p> <p>Work has been conducted with Netherhall School, sending a joint message with the police about the problems of underage drinking and the fact it is intimidating for local residents.</p> <p>A Community Alcohol Partnership has been introduced combining a joint operation with Police, Trading Standards and Retailers. Intelligence is being gathered on where young people are purchasing alcohol. A worrying trend is emerging that parents have often bought the drink and handed it to their children. Police now have powers to issue £80 fines to parents who do this. Two such tickets have been issued to parents in recent weeks. It is encouraging that since this concerted activity was undertaken there are far fewer reports being received and officers are not encountering groups.</p>
Current Situation	Recent patrols suggest the problem is subsiding.

Continue or Discharge?	Discharge. This priority has now been taken on under the Community Alcohol Partnership work. As this is a City wide area of work it is not necessary for it to appear as a South Area priority.
-------------------------------	---

Improving the quality of engagement between the Police and Neighbourhood Watch Groups (NHW)

Objective	To strengthen the link between the Neighbourhood Policing Team (NPT) and NHW making it a quality working partnership addressing the needs of the community.
Action Taken	<p>This priority was introduced as there had been concerns that Neighbourhood Watch Groups were not receiving updates as regularly from the Police, as they felt should have been the case.</p> <p>All Police Community Support Officers attended a training day surrounding the strengths of Neighbourhood Watch and how groups can work to address local issues.</p> <p>All main co-ordinators in the South of the City have now been contacted and a fresh database established that documents the most efficient ways of contacting co-ordinators and their deputies. A dedicated Police Officer was moved from elsewhere in the City to ensure that this task was completed.</p> <p>A positive step has been the introduction of the Monthly Neighbourhood Watch Newsletter, which has been warmly received.</p> <p>As well as newsletters, there has been an increase in the number of e-cops subscribers. This is an excellent way of distributing messages across the Neighbourhood. For further information on e-cops and how to sign up please visit:</p> <p>https://www.cambs-police.co.uk/myneighbourhood/ecops/</p>
Current Situation	The Police continue to contact main NHW co-ordinators monthly. Messages are sent to co-ordinators containing information that we need their members to keep an eye out for.
Continue or Discharge?	Continue. There is much to be done to ensure a strong and productive partnership between the Police and NHW.

Tackling Anti-Social Behaviour in Rectory Terrace, Cherry Hinton High Street

Objective	Disrupt groups and individuals causing ASB in the High Street,
------------------	--

	<p>increase the confidence of local residence and prevent groups of youths in and around Tescos, dealing with offences and appropriately.</p>
Action Taken	<p>Patrols were increased in the area in order to identify who the main troublemakers were. The tactic was to target these ringleaders, and divert those on the periphery.</p> <p>Police response times have improved when calls have been received and pro-active patrols undertaken at the key times of Friday and Saturday evenings.</p> <p>There has been some strong work with Tescos, who have created "acceptable behaviour" guidelines for people using the store, ensuring that shoppers are not disrupted by unruly groups of teenagers.</p> <p>Parents have been written to warning them about the consequences of their children's behaviour. In certain circumstances, tenants of City Council properties have been informed that there could be a risk to their tenancy if their children continue to act anti-socially in the area.</p> <p>Whilst there have been some problems so far this summer they are nowhere near the same level that they were 5 or 6 years ago.</p> <p>A variety of different youth activities have been arranged as part of 'SummerDaze 2008' by the Children and Young People's Participation Service (ChYpPS) at Cambridge City Council. Activities include everything from whistle making, den building, arts and crafts to multimedia workshops on the specifically kitted out double decker-bus, the Dec.</p> <p>Summer Daze also contains Street Games, which offers a wide variety of sporting activities for children and young people to try across the city. These include basketball, cricket, Frisbee and others. Most of the activities take place on the parks and recs. Further details and the full schedule of activities can be viewed by visiting:</p> <p>http://www.cambridge.gov.uk/ccm/navigation/leisure-and-entertainment/childrens-activities</p>
Current Situation	<p>There have been 11 incidents in Rectory Terrace during the period. This level of ASB should be manageable with the appointment of Pc Phil Grime as Community Beat Manager,</p>
Continue or Discharge?	<p>Discharge. The appointment of a new PC will increase the ability of the NPT to tackle this issue as 'Business as Usual'.</p>

Tackling vehicle offences in the Hills Rd and Cherry Hinton area	
Objective	Monthly day of action with Hi-visibility enforcement action against those that fail to abide by the rules of the road.
Action Taken	<p>At the last Area Committee it was agreed that the City Neighbourhood Team would dedicate at least one day per month to enforcement of traffic offences. 30 tickets were issued as a result of this, the majority for speeding. It was particularly concerning that the majority of speeding motorists were in fact local residents.</p> <p>In June six tickets were issued to cyclists on Hills Rd bridge. As a result of this the Police received a number of complaints. At the East Area Committee in June, one of their recommendations was that no further enforcement action should be taken against cyclists.</p> <p>Cambridgeshire County Council has improved the signposting on the bridge and a meeting is scheduled for early September with the County Council, City Councillors and the Police to discuss the way forward.</p> <p>The City Council's Safer Communities Section is developing an Action Plan around tackling vehicle and cycle related anti-social behaviour. A meeting was held involving interested parties at The Guildhall in early August. This work will look at both enforcement work and education in key areas across the city.</p>
Current Situation	The Police are working with the City Council to develop a joint approach to tackling all forms of anti social behaviour involving vehicles and cycles. In the interim the 'days of action' will continue. It is hoped that through education, enforcement and advice we will deal more effectively with the issues. We are conscious that the darker evenings are approaching and the adverse effect this can have on road safety for all road users. This is accounted for in the joint plan.
Continue or Discharge?	Discharge. The issues have been taken on by a partnership approach where the City Council will lead.

Engagement Activity / other issues of note

- Following concerns about drug dealing, City Police launched an operation at The Rosemary Branch Public House. As a result of this, a 34 year old local man has been charged with supplying cocaine. He is currently

remanded in custody awaiting trial. Three further men from Cherry Hinton have been arrested and are on police bail. Unfortunately, as this case is yet to be heard in Court, further details cannot be disclosed. Following the arrests, the Police have been in close contact with the Pub's owners to ensure that there is no repetition.

- Two Persistent Offenders from the Wulfstan Way area were arrested following a robbery in Cambourne, as well as several non-dwelling burglaries in the South Area. Again, these cases are going through the Court system. Further details will be able to be revealed in the next profile document.
- A 14 year old boy from Wulfstan Way was arrested on 30th July following a burglary at a local school. He is currently on police bail.
- On 22nd May 2008, a siege situation developed in Drayton Close, Cherry Hinton. This caused severe disruption to the local community, but fortunately was resolved peacefully. The support of local residents was warmly welcomed in what could have been an extremely volatile situation. This is an ongoing case with the City Council Anti-social behaviour team
- The South Neighbourhood Policing Team is committed to engaging with our community. This has helped assess the "feeling on the ground" and allowed the Team to focus on areas that are of concern to local residents. Neighbourhood Watch is not just about reducing crime – it is about building community spirit and good relations. It brings local people closer together with common goals; to tackle crime and disorder and to keep an eye on each other's property. We have provided monthly news letters and keep in regular contact through e-cops, e-mail and the Constabularies Web site. Our aim is to ensure that we share information and act on the information we receive.
- E-cops messages have been sent on a weekly basis and information has been received through this mechanism that has helped focus patrolling.
- Key Individuals across the Neighbourhood have been identified and they have been visited and asked for their views and advice on a monthly basis. These people include: Councillors, Businesses, Religious Leaders, Neighbourhood Watch Co-ordinators, Youth Workers, and Head Teachers.
- Work has been carried out in schools and with youth groups. A local Guide group was given a tour of the Police station with the assistance of

South officers. We have worked with Long Road 6th Form College giving inputs at their careers fair and inputs on law and drugs to those who are leaving college to start work or attend university. Our PCSO's have been involved in our 'Safer Cycling' event at Colville school as well as work with other schools during Nokia Bike week. Cherry Hinton Youth Group have benefited from regular visits from their local PCSO's.

- Pc Phil Grime has been appointed as a new Community Beat Manager within the South Team.
- In order to tackle issues surrounding underage drinking, a Community Alcohol Partnership has been launched between Trading Standards, Retailers, and the Police. This is working at tackling the supply of alcohol to young people in the South of the City.
- Cambridge Community Safety Partnership is currently running an online survey to enable people who live and work in the city the opportunity to share their views on, and experiences of, crime and disorder in Cambridge. Please visit www.snapsurveys.com/communitysafetysurvey to take part. Completed entries will be entered into a £50 prize draw.

3. Emerging Issues

Neighbourhood trends

Seasonal trends have been seen in the total level of crime and disorder in Cambridge City South with rises seen in both when compared to the previous period. Comparatively, this is still lower than the levels recorded for the same time period in the previous year. Cycle theft continues to increase during this period, albeit at a slower rate than that of the same time period the year before. This is occurring particularly in Trumpington and Cherry Hinton.

Criminal damage has decreased throughout the ward. Increases have been seen in violent offences (particularly in Trumpington and Queen Ediths), and in non-dwelling burglaries in Cherry Hinton and Queen Ediths.

Trumpington

- Total crime and anti-social behaviour (ASB) has increased in Trumpington ward over the period. This is likely to be due to a seasonal trend directly related to the warmer months and longer days contained within this period.
- Violent offences have risen since the previous period, and are at a higher level than that recorded in the same time period last year. The majority of these occurred in May, June and July and mainly consisted of assaults.

This is likely to be associated with the night-time economy as offences tend to occur between 19:00 and 03:00hrs.

- Personal robberies (also categorised under violent crime) may be emerging as an issue in the Gonville Place/Gresham Road area with 8 offences reported during the period. However, it should be noted that 3/8 offences reported targeted a group of 3 victims simultaneously.
- Theft from motor vehicle remains stable in comparison to the previous period and is only slightly higher than the same time period in the previous year. The majority of these offences occurred in June and July and were relatively spread out across the ward. However, there were 6 offences reported in the Brookside, Bateman Street and Russell Court area and 3 more offences in nearby Chaucer Road.
- Cycle theft has increased during this period to 48 offences. This is a lower level than that recorded for the same time period in the previous year. Nine of these offences occurred in and around the Gonville Place and Gresham Road area.
- Criminal damage has increased since the previous period, but remains lower than the levels reported during the same time period last year. These offences mainly targeted vehicles and 36% of which occurred in the Gonville Place, Gresham Road and Harvey Road area.
- In addition, the area of Gonville Place remains a hotspot for ASB, with similar levels of incidents occurring nearby on the Harvey Road, Station Road and Hills Road. There may also be a minor hotspot at Paget Road in Trumpington. Although, it should be noted that there has been a drop in levels of ASB across the ward since the previous period and is low compared to the same period last year.
- There were 16 reports of fly tipping in the ward over the period. On 15 occasions the fly tip was removed within 24 hours but there was insufficient evidence to take enforcement action. A letter was sent to a trade offender requesting waste transfer notes on the other occasion. Flytipping occurred on Monkswell and Hanover Court on 3 occasions each¹.
- There were 6 abandoned vehicles reported across the ward over the period. Three of these were issued with an illegally parked sticker, while

¹ Partnership data was only available for the months of April – June.

the rest included vehicles that were either claimed or not on site at the time of inspection.

- Nine derelict cycles were removed from various locations across the ward².

Cherry Hinton

- Total crime has decreased in Cherry Hinton ward compared to levels recorded in the previous period.
- This was mainly due to reductions in criminal damage and dwelling burglary offences.
- Criminal damage has fallen to a similar level of that recorded for the same time period last year.
- Non-dwelling burglaries have doubled since the previous period. These were mainly situated within Cherry Hinton village.
- A large proportion of offences (mainly thefts) occurred at Coldhams Business Park and Coldhams Lane with 14 and 20 offences respectively. These were mainly situated at Next Generation Leisure Centre and The Rosemary Branch Public House.
- Overall, ASB has followed a seasonal increase relating to the warmer and longer days within the period. This is shown by the similar level of incidents recorded in the same period last year.
- Cherry Hinton High Street remains a hotspot for offences and disorder with 17 offences and 22 anti-social behaviour incidents occurring over the period. These included violent crime, non-dwelling burglary and theft offences and groups of youths causing disorder. Nine out of the 17 offences reported occurred in April. The peak time for disorder to occur was between 20:00 and 00:00hrs with minor peaks occurring during the hour of 15:00 and again at 17:00hrs.
- In addition, the area surrounding Cherry Hinton Road has recorded a similar number of offences to High Street. The majority of these occurred within Cherry Hinton Hall and at the Orchard Service Station.

² Partnership data was only available for the months of April – June.

- Colville Road is emerging as a hotspot for ASB with 29 incidents reported during the period. Many of these relate to drunken behaviour and nuisance youths causing disorder.
- Rectory Terrace in Cherry Hinton remains a hotspot for ASB with 16 incidents occurring over the period. The majority of these occurred in front of the Tesco Express store and related to groups of youths gathering, causing disorder and being abusive to customers.
- There were also 10 incidents occurring on Kathleen Elliot Way, however, 7 of these relate to problems at a single residence on the road.
- There were 16 reports of fly tipping in the ward over the period. On 14 occasions the fly tip was removed within 24 hours but there was insufficient evidence to take enforcement action, 2 warning letters were sent. Repeat locations³ for fly tipping were Cherry Hinton High Street (6)⁴.
- There were 11 abandoned vehicles reported. One was removed and stored in a compound, 1 was issued an illegal parked sticker and the remainder included vehicles either being claimed or not on site at the time of inspection. Three reports related to Cherry Hinton High Street⁴.
- 25 derelict bicycles were removed from the ward with repeat locations at Kathleen Elliot Way (6), Wenvoe Close and Cherry Hinton Road (5)⁴.

Queen Ediths

- Levels of total crime in Queen Ediths ward have remained stable since the previous period with stabilisation seen in the majority of crime types.
- During the period criminal damage offences have fallen to 33 from 51 offences in the previous period. This is low compared to 42 offences reported in the same time period last year.
- Following on from the previous update, violent crime offences continue to rise to 37 recorded during the period and is again mainly due to offences at Addenbrookes relating to patients assaulting/being abusive to staff (14 offences). However, it should be noted that the current level of offences is lower than the 42 offences recorded during the same time period last year.
- Non-dwelling burglaries have increased by 73% during the period. The majority of these targeted schools, the Netherhall School in particular (both

³ Greater than 3 occurrences.

⁴ Partnership data was only available for the months of April – June.

the Upper and Lower School sites) was targeted 6 times during the period. The Perse School and the EF institute of language were also targeted on several occasions during the period.

- The previously identified hotspot for crime and disorder at Wulfstan Way has been reduced with 3 offences and 12 incidents reported during the period. The disorder was mainly youth related.
- Violent crime and cycle theft makes up the majority of 15 offences occurring on Mowbray Road.
- Queen Ediths Way also recorded a similar level of offences with 16 reported during the period. Fourteen of these were situated at the Netherhall School (both Upper and Lower School sites) and comprised of crimes including burglaries and thefts. This includes 3 offences where metal was targeted. Twelve incidents were recorded during the period for Queen Ediths Way, which mainly related to nuisance youths causing problems.
- Anti-social behaviour has taken a seasonal increase (demonstrated by the levels recorded in the same time period in the previous year).
- There were only 8 reports of fly tipping in the ward and on 5 occasions the fly tip was removed within 24 hours but there was insufficient evidence to take enforcement action. Two warning letters have been sent and in another case the identity of one offender was investigated, but there was insufficient evidence to continue. Flytipping occurred on Hills Road on 3 occasions in April⁵.
- There were 5 abandoned vehicles reported. These included two which were not on site at the time of inspection and 1 which was later claimed by the owner⁵.
- 33 derelict bicycles were removed across the ward, 20 of which were located on Babraham Road at the Park and Ride site⁵.

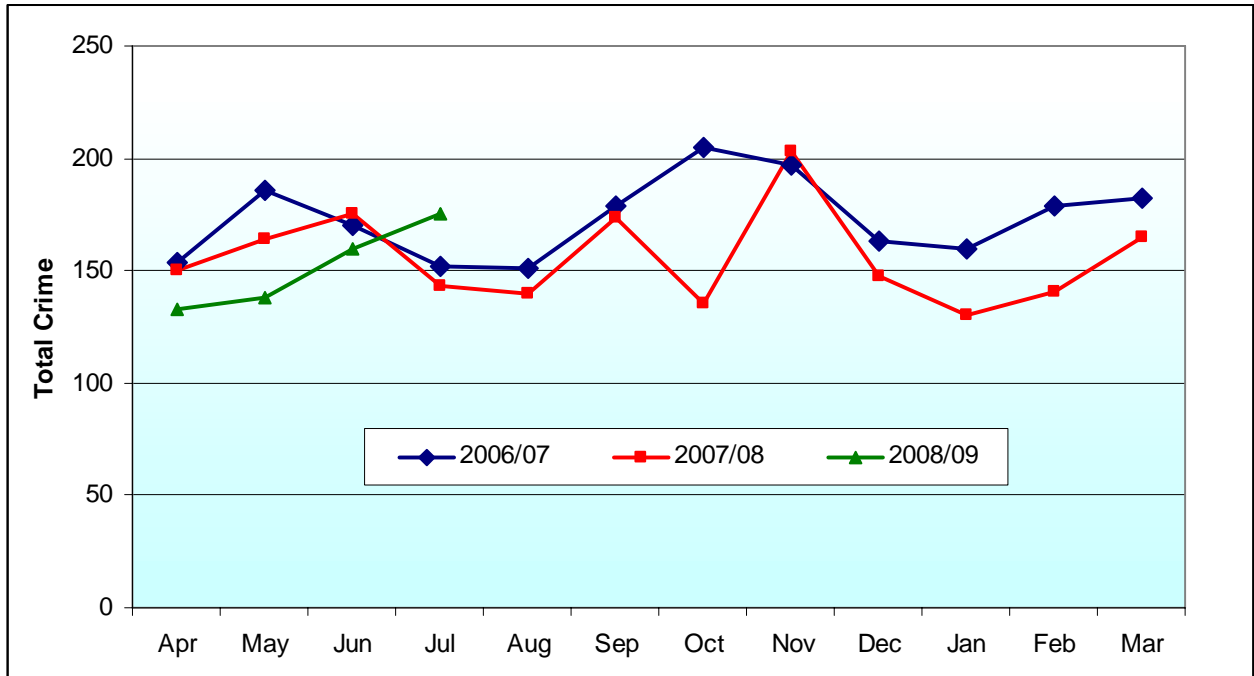
4. Recommendations

- Non-dwelling burglaries in Cherry Hinton and Queen Ediths wards especially at schools in the area.
- To enhance the role of Neighbourhood Watch and other voluntary organisations across the Neighbourhood.

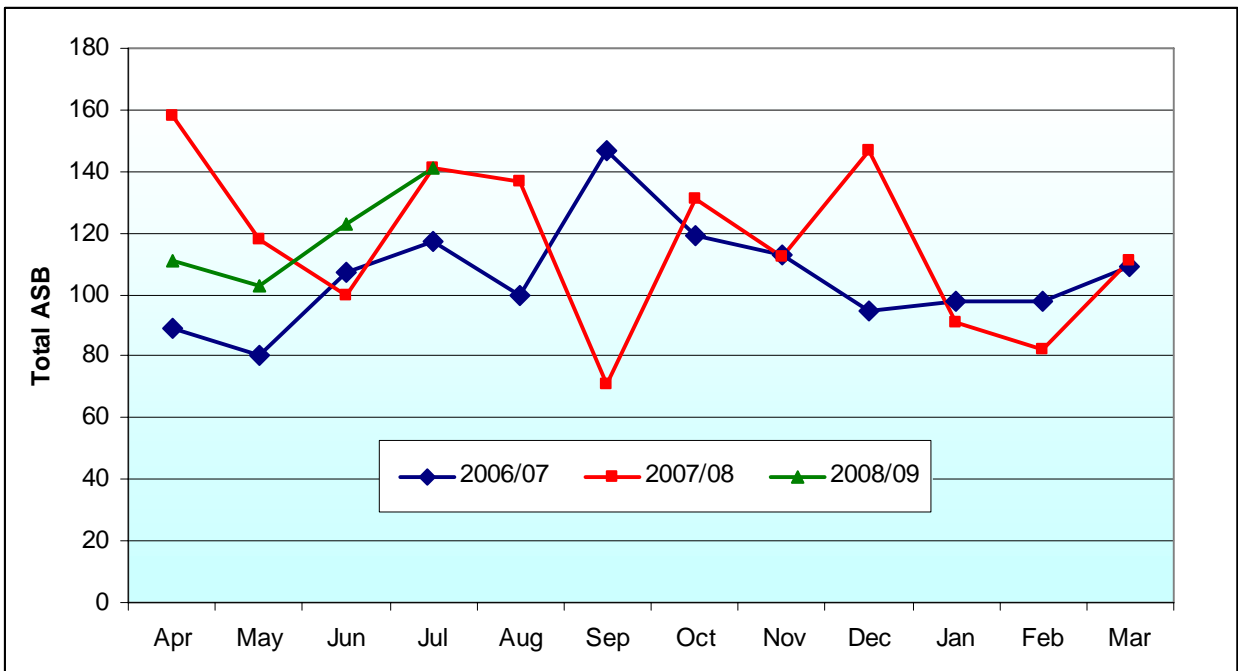
⁵ Partnership data was only available for the months of April – June.

5. Current Crime and Incident Levels

Total Crime



Total ASB



Current Crime and Incident Levels in Neighbourhood, by Ward

			Dwell. Burg.	Other Burg.	Violent Crime	Robbery	Theft of Vehicle	Theft from Veh.	Cycle Theft	Theft from Shop	Criminal Damage	Other Crime	TOTAL CRIME	TOTAL ASB
Neighbourhood	City South	Apr 08 – Jul 08	28	62	127	9	9	45	84	10	101	131	606	478
		Dec 07 – Mar 08	36	36	105	4	9	50	61	14	132	137	584	431
		Apr 07 – Jul 07	28	39	119	5	17	45	102	11	114	152	632	517
Wards	Trumpington	Apr 08 – Jul 08	8	18	54	8	4	20	48	7	34	41	242	119
		Dec 07 – Mar 08	7	12	42	2	3	19	29	7	27	54	202	180
		Apr 07 – Jul 07	7	20	36	2	11	15	64	7	42	58	262	159
	Cherry Hinton	Apr 08 – Jul 08	7	14	36	0	3	13	6	3	34	38	154	206
		Dec 07 – Mar 08	12	7	38	0	5	14	4	4	54	32	170	144
		Apr 07 – Jul 07	12	11	41	3	3	16	12	4	30	42	174	200
	Queen Edith	Apr 08 – Jul 08	13	30	37	1	2	12	30	0	33	52	210	153
		Dec 07 – Mar 08	17	17	25	2	1	17	28	3	51	51	212	107
		Apr 07 – Jul 07	9	8	42	0	3	14	26	0	42	52	196	158